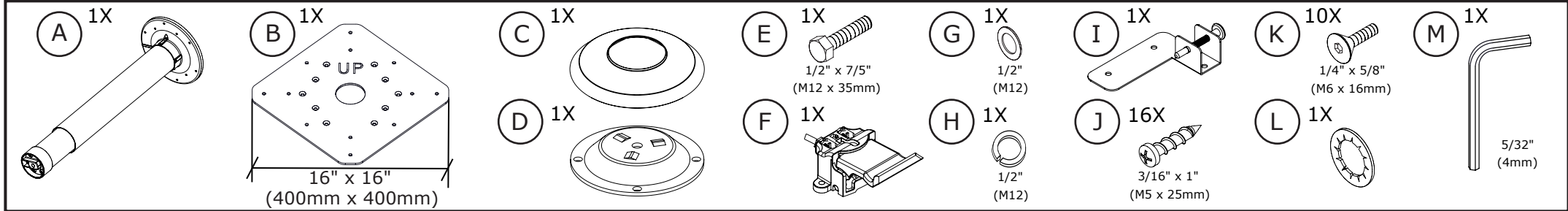
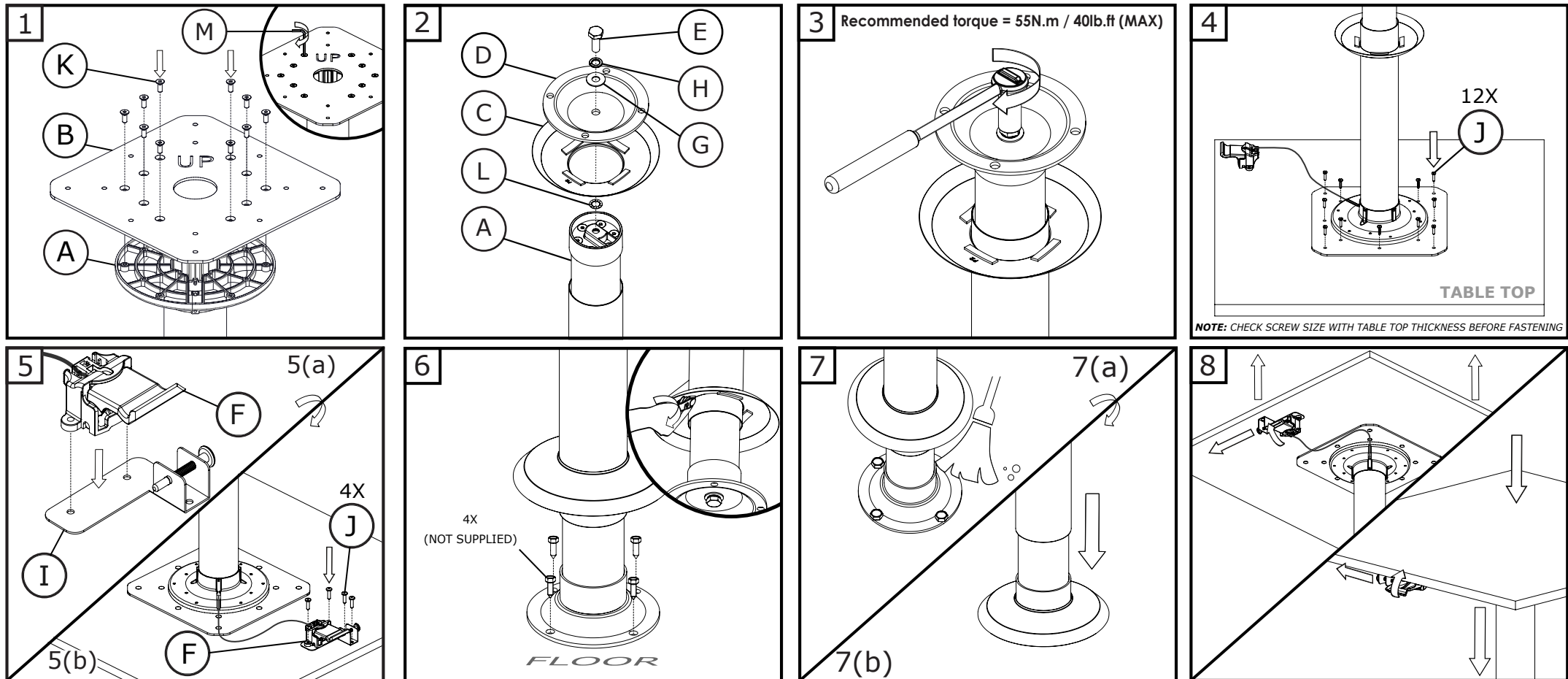


ASSEMBLY INSTRUCTIONS BOLT-DOWN BASE - PNEUMATIC POST

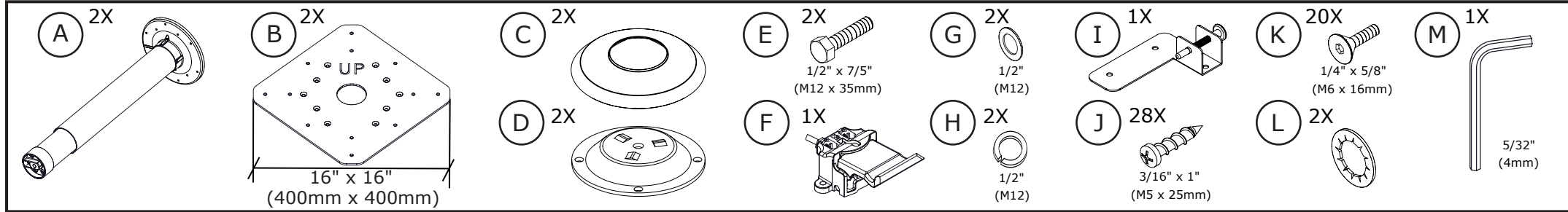


CAUTION: BE CAREFUL WHEN HANDLING PNEUMATIC POST, AVOID TRIGGERING HANDLES DURING INSTALLATION

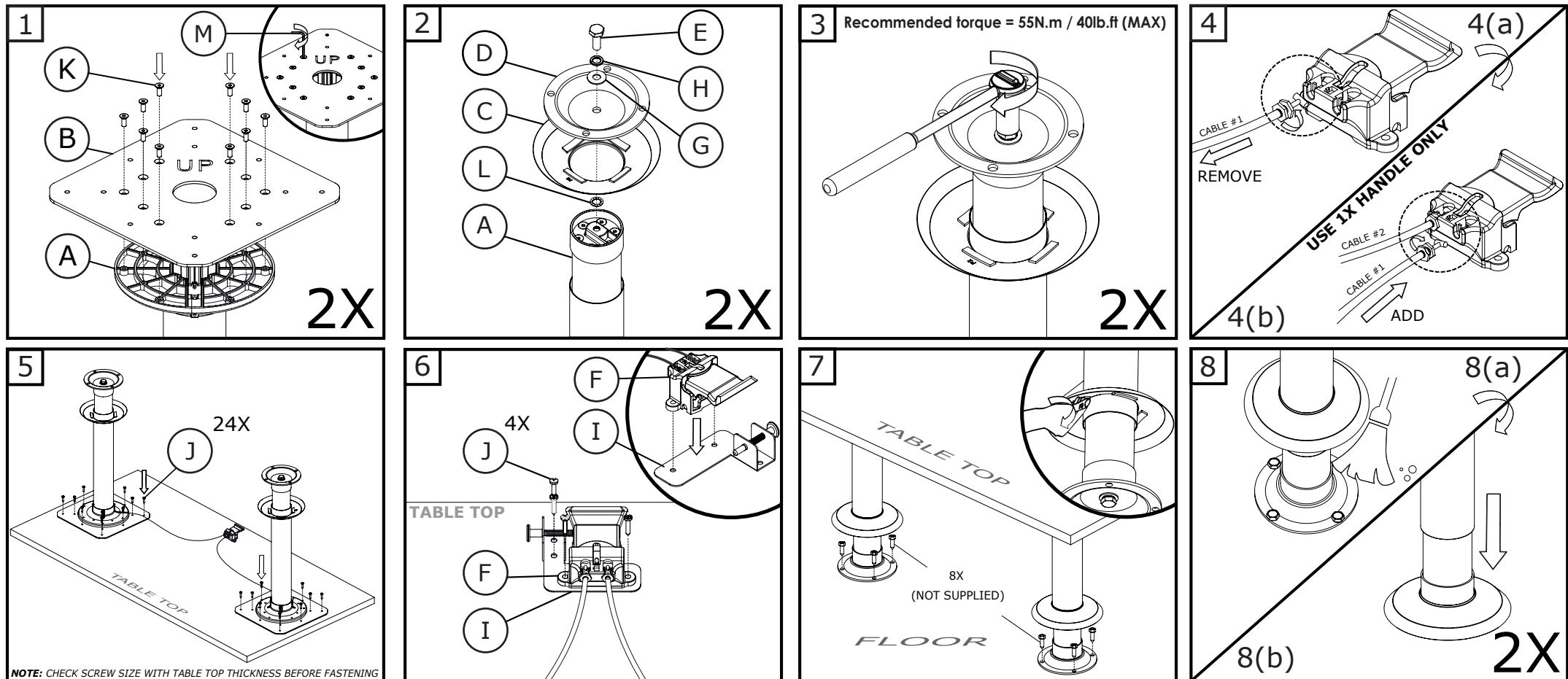


ASSEMBLY INSTRUCTIONS

BOLT-DOWN BASE - TWIN PNEUMATIC POST



CAUTION: BE CAREFUL WHEN HANDLING PNEUMATIC POST, AVOID TRIGGERING HANDLES DURING INSTALLATION



Ensure instructions are followed during installation. Damages resulting from incorrect installation may result in voiding of warranty