



Ice Cream Dipping Cabinets

Models:

#360ADC4HC	26" No Glass	#360ADC4FHC	26" Flat Glass	#360ADC4CHC	26" Curved Glass
#360ADC8HC	49" No Glass	#360ADC8FHC	49" Flat Glass	#360ADC8CHC	49" Curved Glass
#360ADC12HC	71" No Glass	#360ADC12FHC	71" Flat Glass	#360ADC12CHC	71" Curved Glass

Note:

You should read this manual in its entirety prior to equipment setup, operation, and maintenance.

www.AvantcoRefrigeration.com

Warnings

DANGER – RISK OF FIRE OR EXPLOSION. FLAMMABLE REFRIGERANT USED. TO BE REPAIRED ONLY BY TRAINED SERVICE PERSONNEL. DO NOT PUNCTURE REFRIGERANT TUBING.

PELIGRO – RIESGO DE INCENDIO O EXPLOSION. REFRIGERANTE INFLAMABLE UTILIZADO. PARA SER REPARADO SOLAMENTE POR PERSONAL DE SERVICIO CALIFICADO. NO PINCHAR LA TUBERÍA REFRIGERANTE.

DANGER – RISQUE DE FEU OU D'EXPLOSION. LE FRIGORIGÈNE EST INFLAMMABLE. CONFIER LES RÉPARATIONS À UN TECHNICIEN SPÉCIALISÉ. NE PAS PERFORER LA TUBULURE CONTENANT LE FRIGORIGÈNE.

CAUTION – RISK OF FIRE OR EXPLOSION. FLAMMABLE REFRIGERANT USED. CONSULT REPAIR MANUAL/OWNER'S GUIDE BEFORE ATTEMPTING TO SERVICE THIS PRODUCT. ALL SAFETY PRECAUTIONS MUST BE FOLLOWED.

ATENCIÓN – RIESGO DE INCENDIO O EXPLOSIÓN. REFRIGERANTE INFLAMABLE UTILIZADO. CONSULTE EL MANUAL DE REPARACIÓN / GUÍA DEL PROPIETARIO ANTES DE INTENTAR DAR SERVICIO A ESTE PRODUCTO. DEBEN CUMPLIR CON TODAS LAS PRECAUCIONES DE SEGURIDAD.

ATTENTION – RISQUE DE FEU OU D'EXPLOSION. LE FRIGORIGÈNE EST INFLAMMABLE. CONSULTER LE MANUEL DU PROPRIÉTAIRE/GUIDE DE RÉPARATION AVANT DE TENTER UNE RÉPARATION. TOUTES LES MESURES DE SÉCURITÉ DOIVENT ÊTRE RESPECTÉES.

CAUTION – RISK OF FIRE OR EXPLOSION DUE TO PUNCTURE OF REFRIGERANT TUBING; FOLLOW HANDLING INSTRUCTIONS CAREFULLY. FLAMMABLE REFRIGERANT USED.

ATENCIÓN – RIESGO DE INCENDIO O EXPLOSIÓN DEBIDO A LA PERFORACION DE LA TUBERÍA REFRIGERANTE; SIGA LAS INSTRUCCIONES DE MANIPULACIÓN CON CUIDADO. REFRIGERANTE INFLAMABLE UTILIZADO.

ATTENTION – RISQUE DE FEU OU D'EXPLOSION SI LA TUBULURE CONTENTANT LE FRIGORIGÈNE EST PERFORÉE; SUIVRE LES INSTRUCTIONS DE MANUTENTION AVEC SOIN. LE FRIGORIGÈNE EST INFLAMMABLE.

CAUTION – RISK OF FIRE OR EXPLOSION DUE TO FLAMMABLE REFRIGERANT USED. FOLLOW HANDLING INSTRUCTIONS CAREFULLY IN COMPLIANCE WITH LOCAL GOVERNMENT REGULATIONS.

ATENCIÓN – RIESGO DE INCENDIO O EXPLOSIÓN DEBIDO A REFRIGERANTE INFLAMABLE UTILIZADO. SIGA LAS INSTRUCCIONES DE MANIPULACIÓN CON CUIDADO CONFORME A LAS REGLAS DE LA MUNICIPALIDAD.

ATTENTION – RISQUE DE FEU OU D'EXPLOSION SI LE FRIGORIGÈNE EST INFLAMMABLE. SUIVRE LES INSTRUCTIONS DE MANUTENTION AVEC SOIN CONFORMÉMENT AUX RÈGLEMENTATION GOUVERNEMENTALE LOCAUX.

Installation

This unit is intended for use in a temperature-controlled environment of less than 75°F and 55% relative humidity. Malfunction due to improper conditions is not covered under warranty.

Before Installation

- If the unit has recently been transported on its side, please let unit stand upright for a minimum of 24 hours before plugging it in.
- To prevent compressor or system damage, do not transport the unit on an incline of more than 45 degrees.
- Do not use the condenser, lid, or hinges as loading or unloading points.
- Make sure that the unit has reached the desired temperature before loading the unit with products. This unit is meant for keeping cold products cold, not chilling warm products.
- Make sure that there is proper ventilation around the unit in the area where it will operate.
- Make sure all accessories are installed (i.e., shelves, shelf clips, casters) before plugging in the unit.
- Do not attempt to remove or repair any component of the unit. Consult an authorized service technician for servicing/repair.
- Do not sit or stand inside the unit.
- Please read through the manual in its entirety.
- The unit should be located away from doors, air ducts, and fans that could disrupt airflow and negatively impact performance.

Cabinet Location Guidelines

- Install the unit on strong and leveled surfaces.
 - If the surface is uneven, the unit may be noisy.
 - The unit may malfunction if the surface is uneven.
- Install the unit in an indoor, well-ventilated area.
 - For best performance, please maintain clearance of 6" on the front and back of the unit.
 - Do not use outdoors. For indoor use only.
 - Avoid direct sunlight.
- Avoid installation in a high humidity and/or dusty area.
 - Humidity above 55% can cause the unit to rust, collect condensation, and may decrease efficiency.
 - Dust collected on condenser coil will cause unit to malfunction.
 - Malfunction due to temperatures above 75 degrees Fahrenheit, humidity above 55%, or improperly maintained condenser coil will void the warranty.
- Select a location away from heat and moisture-generating equipment.
 - Ambient temperatures above 75 degrees Fahrenheit may cause the compressor to malfunction.
 - Malfunction due to ambient temperatures above 75 degrees Fahrenheit will void warranty.
 - Do not install the unit inside a closet or alcove.

Installation

Cautions

- Before placing food into the freezer, adjust the temperature control to the lowest point (highest number) and let it run for several hours. Put the food in, and after 12 hours adjust the temperature control to the normal point.
- The temperature control may need to be adjusted based on the amount of food in the freezer and the ambient room temperature. More food or a higher room temperature may require a lower temperature setting (higher number).
- Never put hot food directly in the freezer. Food should be cold or frozen before placing it inside.
- DO NOT fill the freezer full of product. For best results, large items should be divided into smaller parts, and you should leave space between items so cold air can properly circulate and maintain safe temperatures.

Electrical

- Ensure that the required voltage is being supplied at all times.
- The unit should be plugged into a grounded and properly-sized electrical outlet with appropriate over-current protection. Refer to the electrical requirements on the unit's nameplate.
- The unit should have its own dedicated outlet.
- DO NOT use extension cords.
- Ensure the unit is not resting on or against the electrical cord.
- If the unit is not in use for a long period of time, unplug from the outlet.
- To avoid shock and fire hazards, DO NOT plug in or unplug the unit with wet hands.
- After unplugging the unit, wait at least 10 minutes before plugging it back in. Failure to do so could cause damage to the compressor.
- In the event of damage to the electric wires or plug, please contact the after-sales service. DO NOT attempt to repair it yourself.
- If the voltage is unstable, please choose the suitable automatic voltage regulator.

Operation

Adjusting the Temperature

- The temperature in the cabinet can be adjusted with the control knob.

If your unit has a numbered control knob:

- Setting between "4" and "5" is standard for storage and service of ice cream.
- If a different temperature is needed, adjust knob to a lower number (warmer) or a higher number (colder).

Serving Temperature

- Ice Cream should be served between 6-10 degrees Fahrenheit.
- Gelato and Sorbet should be served between 10-22 degrees Fahrenheit.
- Frozen Yogurt should be served between 17-19 degrees Fahrenheit.
- Acai should be served between 10-14 degrees Fahrenheit.

Loading Product

- DO NOT block the air vents.
- Ensure all accessories are sitting level and properly secured before loading products.
- Non-packaged foods should be packed in plastic bags for proper safety.
- In order to save energy, limit the number of times the lid is opened and the length of time the lid is open.
- DO NOT place heavy or hot things on top of the freezer; this can damage it.
- Be sure to power the freezer off before cleaning it.
- DO NOT store flammable and explosive gas or liquids inside the unit.
- The freezer should not be left unused for a long period of time. If you plan to stop using the freezer, power it off, then clean the inside and keep the door open for 2-3 days to let it dry.

Please Note

- The sound of water flowing during operation is normal; this is the refrigerant.
- When the humidity is high, condensation may form on the surface of the freezer.
- When the freezer is running, the condenser and compressor will be hot.

Operation

Defrosting the Unit

- To ensure optimal performance, unit should be defrosted when the thickness of the ice on the cabinet wall reaches 1/4".
- Remove all product from the unit.
- Unplug the unit and use a drainage tube to release the water from the melted ice. The drainage tube will need to be placed in a drain or pump.
- Once all ice is melted and water is drained, the manual defrost is complete.
- Wipe down the inside of the cabinet with a cloth, and then plug the unit back in and allow it to get back to optimal serving temperature before inserting product.

Safety Information

Pay close attention to the safety notices in this section. Disregarding these notices may lead to serious injury and/or damage to the unit.

- To minimize shock and fire hazards, be sure to not overload outlet. This unit should be given its own outlet.
- DO NOT use extension cords.
- DO NOT put your hands under the unit while it is being moved.
- When the unit is not in use for a long period of time, unplug the unit from the outlet.
- After unplugging the unit, wait at least 10 minutes before plugging it back in. Failure to do so could cause damage to the compressor.
- To minimize shock and fire hazards, do not plug or unplug the cord with wet hands.
- Unplug the unit before performing maintenance or cleaning.
- To minimize shock and fire hazards, make sure that the unit is properly grounded.
- DO NOT attempt to remove or repair any component unless instructed by the factory.
- DO NOT allow the unit to rest on or against the electrical cord and/or plug.
- DO NOT hang on the doors.
- DO NOT attempt to alter or tamper with the electrical cord.
- DO NOT use the unit if the power cord is damaged.

Cleaning

DISCONNECT POWER CORD BEFORE CLEANING ANY PARTS OF THE UNIT.

It is strongly recommended that any servicing of the unit be performed by an authorized service technician.

Interior

- Use a soft cloth with some moderate detergent and warm water to clean the freezer.
- DO NOT use steel wool, caustic soap, abrasive cleaners, or bleach that may damage the interior finish.
- Use warm water to clean oil or fruit juice stains on the gasket to keep its elasticity. Apply some talcum powder to it to prolong its life.
- Periodically remove the accessories from the unit and clean them with mild soap and warm water.

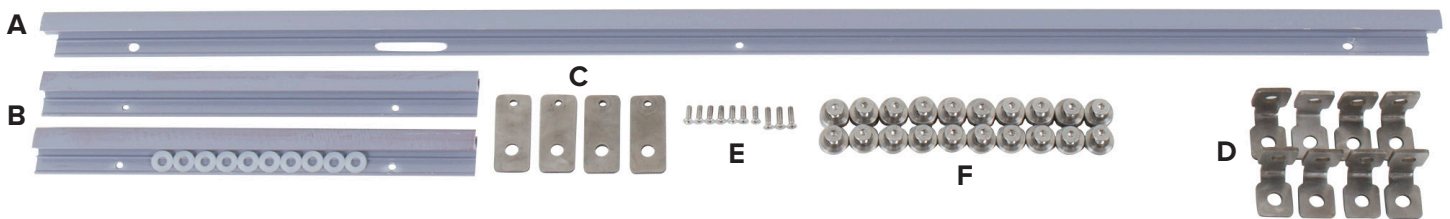
Troubleshooting

Problem	Possible Cause	Possible Solution
Freezer keeps unfreezing.	Temperature control is set to the highest point.	Adjust the temperature.
	The plug is not properly plugged in.	Make sure the plug is connected properly.
	The fuse is broken off.	Replace the fuse.
Compressor does not shut off.	Temperature control is set to the lowest point.	Adjust the temperature.
	There is too much product in the freezer.	Remove some product from the freezer.
	There is ice buildup.	Defrost the freezer.
	The doors are being opened and shut too often.	Reduce the amount of time the door on the freezer is opened and shut.
	The freezer is too close to a wall.	Place the freezer away from the wall (at least 4").
	The freezer is located too close to a heat source.	Move the freezer away from the heat source.
Loud noises coming from the unit.	The freezer is on an uneven surface.	Relocate the freezer to a level surface.
	The refrigeration tubes are touching each other.	Make sure the tubes are not touching each other.
Unit is leaking water.	High relative humidity.	This refrigerator is designed to perform in temperature-controlled environments up to 75°F and 55% relative humidity.
	Drainage tube is clogged.	Verify the drainage tube is clear and unobstructed.
	Temperature controller failed.	Contact a licensed service technician.

Glass Canopy Assembly

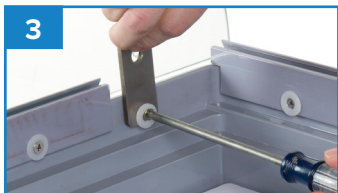
Included Hardware

A 360BARFRNT	Front Rail (x1)	D 360CORNER	L-Shaped Bracket (x8)
B 360BARSIDE	Side Rail (x2)	E 360SCREW	Small Screws for Rails (x11)
C 360PLATE	Metal Plate for Side Rails (x4)	F 360GLSSCREW	Large Screw for Glass Panels (x20)



Assembly Instructions

1. Install the (3) plastic channels along the sides and front of the cabinet using the Phillips screws and white washers.
Note: A short channel should be installed on each side, and the long channel should be installed on the front.
2. Insert the glass panel into the side channel.
3. Attach a metal plate to the cabinet at both ends of the channel, using the Phillips screws and white washers.
4. Attach each of the metal plates to the side glass panel using the socket head screws, white washers, metal washers, and associated metal fasteners.
5. Repeat for other side of the cabinet.



Glass Canopy Assembly

6. Insert the front glass panel into the front channel.
7. Install the gasket on the top edge of the front glass panel.

8. Use the L-shaped brackets and large screws to attach the front glass panel to each of the side panels.
Note: There are two bracket mounting locations on each side; one at the top, and one at the bottom.
9. Attach L-shaped brackets to the side panels to help support the top glass panel.

10. Place top glass panel atop the front and side panels.

11. Use the L-shaped brackets and large screws to attach the top glass panel to each of the side glass panels.
Note: There are two bracket mounting locations on each side; one at the top, and one at the bottom.

