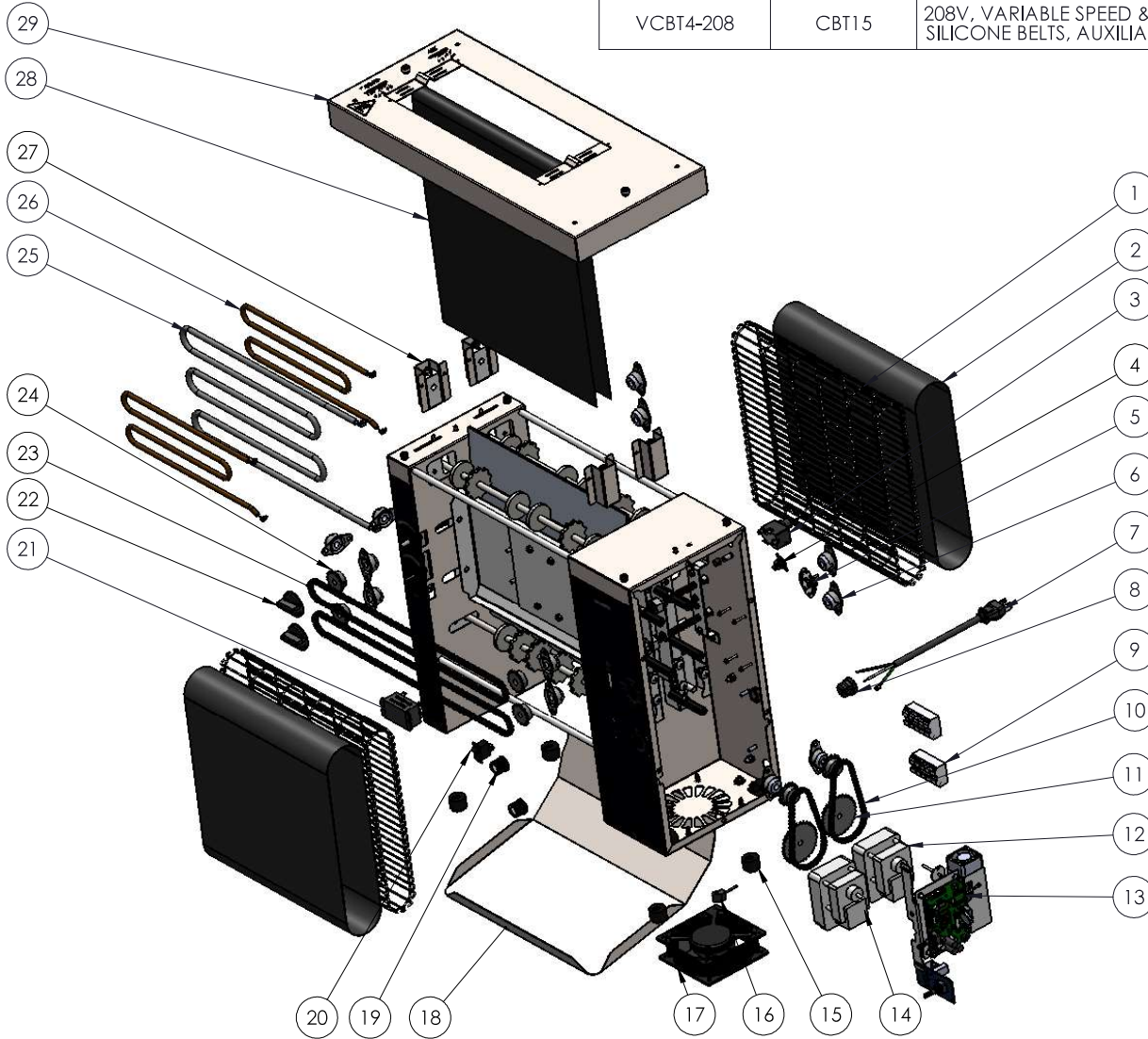




VERTICAL CONTACT BUN TOASTER 208V - 4 SERIES

| ITEM NO. | MODEL NO. | DESCRIPTION | VOLTAGE | CURRENT | CORD PLUG |
|-----------|-----------|---|---------|---------|-----------|
| VCBT4-208 | CBT15 | 208V, VARIABLE SPEED & HEAT CONTROLS, SILICONE BELTS, AUXILIARY BUN WARMERS | 208V | 16A | 6-20P |



| ITEM NO. | PART NUMBER | DESCRIPTION | QTY. |
|----------|-------------|-----------------------------------|------|
| 1 | B210004 | WIRE CONVEYOR BELT 14" X 26.5" | 2 |
| 2 | B400506 | VCBT BELT WRAPS - 2PCS | 1 |
| 3 | 352751-1 | 350C HIGH LIMIT THERMOSTAT | 1 |
| 4 | B401851 | THERMOSTAT, DISC, 46C CLOSE | 1 |
| 5 | B405028 | 68C RESET SWITCH | 1 |
| 6 | B201101 | BEARING ASSEMBLY, 3/8" | 12 |
| 7 | B401053 | CORD, POWER 12/3, 60" 6-20P PLUG | 1 |
| 8 | B400321 | STRGHT 12 GA STRAIN RLF BSHNG | 1 |
| 9 | B401033 | TERMINAL BLOCK 5 POSITION | 2 |
| 10 | B401863 | DRIVE CHAIN HIGH SPEED | 2 |
| 11 | B401302 | 32-TOOTH SPROCKET | 2 |
| 12 | B401201 | DRIVE MOTOR 208/240V RMS 344 | 1 |
| 13 | B401817 | VCBT 208-240V CONTROL KIT | 1 |
| 14 | B401203 | DRIVE MOTOR, 208/240V REVERSED | 1 |
| 15 | 351775-1 | KIT, FOOT, VBL, 1.00" OD, 20MM LG | 4 |
| 16 | B401060 | CORD,FAN,HP-75,24-A | 1 |
| 17 | B401211 | MOTOR, FAN | 1 |
| 18 | B310009 | VCT TOAST CHUTE | 1 |
| 19 | B405019 | SILVER PUSH-ON KNOB W/ SET SCREW | 2 |
| 20 | 719124 | SWITCH, ROCKER SPST 10A 125V | 1 |
| 21 | B401225 | RELAY AC 240V | 1 |
| 22 | 351788-06-1 | CONTROL KNOB | 2 |
| 23 | B401810 | VCT ROLLER CHAIN | 2 |
| 24 | B401303 | SPROCKET,25B17-3/8 | 6 |
| 25 | B401820 | 208V HEATER, 2350W | 1 |
| 26 | B410024 | AUXILIARY HEATER, 208V 450W | 2 |
| 27 | B400110 | VCBT SPRING KIT | 1 |
| 28 | B401325 | RELEASE SHEET (INSTALLED) | 1 |
| 29 | B400111 | VCBT TOP COVER KIT | 1 |