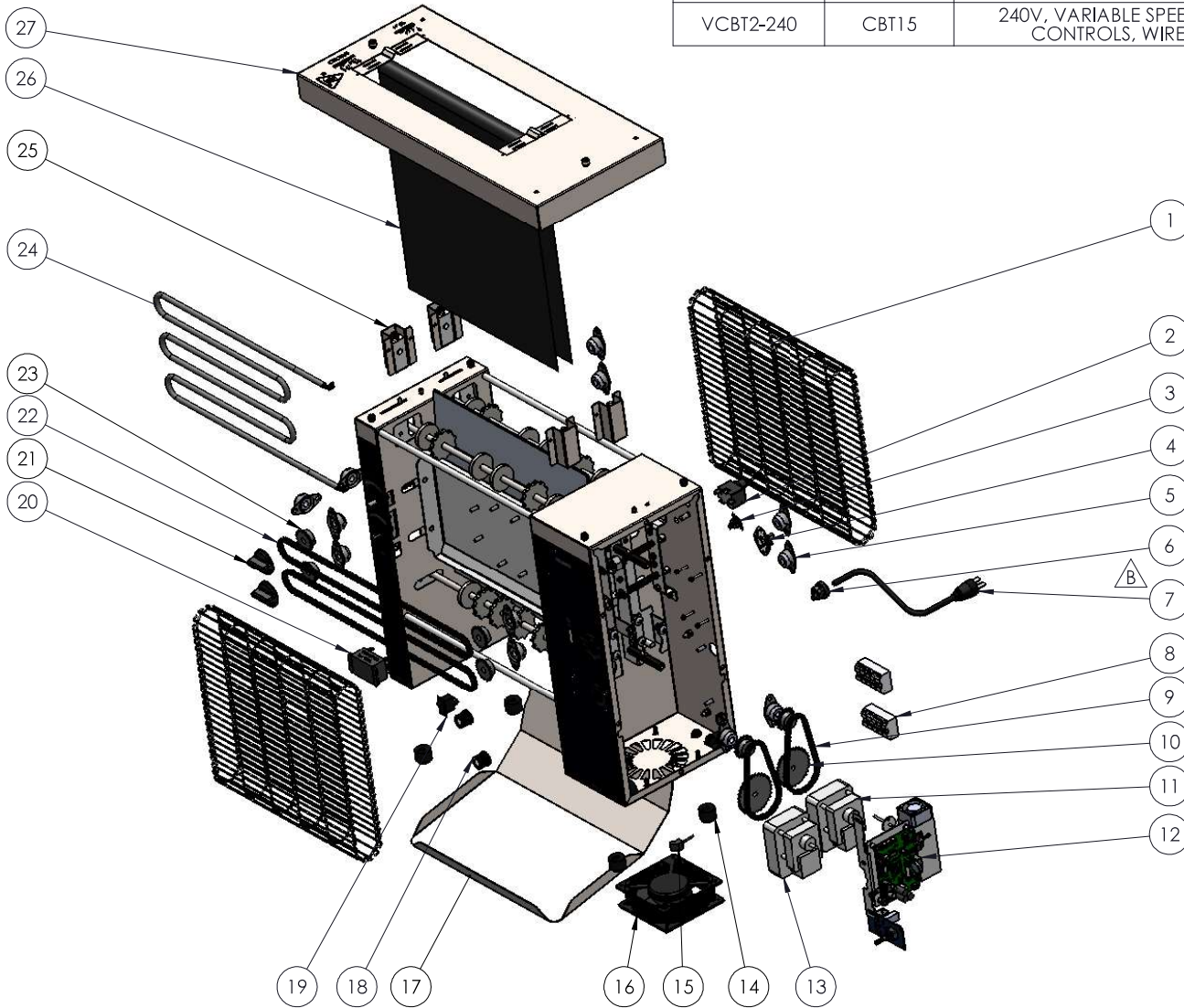




VERTICAL CONTACT BUN TOASTER 240V - 2 SERIES

ITEM NO.	MODEL NO.	DESCRIPTION	VOLTAGE	CURRENT	CORD PLUG
VCBT2-240	CBT15	240V, VARIABLE SPEED & HEAT CONTROLS, WIRE BELTS	240V	10A	6-15P



ITEM NO.	PART NUMBER	DESCRIPTION	QTY.
1	B210004	WIRE CONVEYOR BELT 14" X 26.5"	2
2	352751-1	350C HIGH LIMIT THERMOSTAT	1
3	B401851	THERMOSTAT, DISC, 46C CLOSE	1
4	B405028	68C RESET SWITCH	1
5	B201101	BEARING ASSEMBLY, 3/8"	12
6	B400320	14 GA STRAIGHT STRAIN RELIEF	1
7	356935-1	VCBT POWER CORD NEMA 6-15P 72"	1
8	B401033	TERMINAL BLOCK 5 POSITION	1
9	B401863	DRIVE CHAIN HIGH SPEED	2
10	B401302	32-TOOTH SPROCKET	2
11	B401201	DRIVE MOTOR 208/240V RMS 344	1
12	B401817	VCBT 208-240V CONTROL KIT	1
13	B401203	DRIVE MOTOR, 208/240V REVERSED	1
14	351775-1	KIT, FOOT, VBL, 1.00" OD, 20MM LG	4
15	B401060	CORD,FAN,HP-75.24-A	1
16	B401211	MOTOR, FAN	1
17	B310009	VCT TOAST CHUTE	1
18	B405019	SILVER PUSH-ON KNOB W/ SET SCREW	2
19	719124	SWITCH, ROCKER SPST 10A 125V	1
20	B401225	RELAY AC 240V	1
21	351788-06-1	CONTROL KNOB	2
22	B401810	VCT ROLLER CHAIN	2
23	B401303	SPROCKET,25B17-3/8	6
24	B401838	VCT HEATER, 240V 2350W	1
25	B400110	VCBT SPRING KIT	4
26	B401325	RELEASE SHEET (INSTALLED)	1
27	B400111	VCBT TOP COVER KIT	1