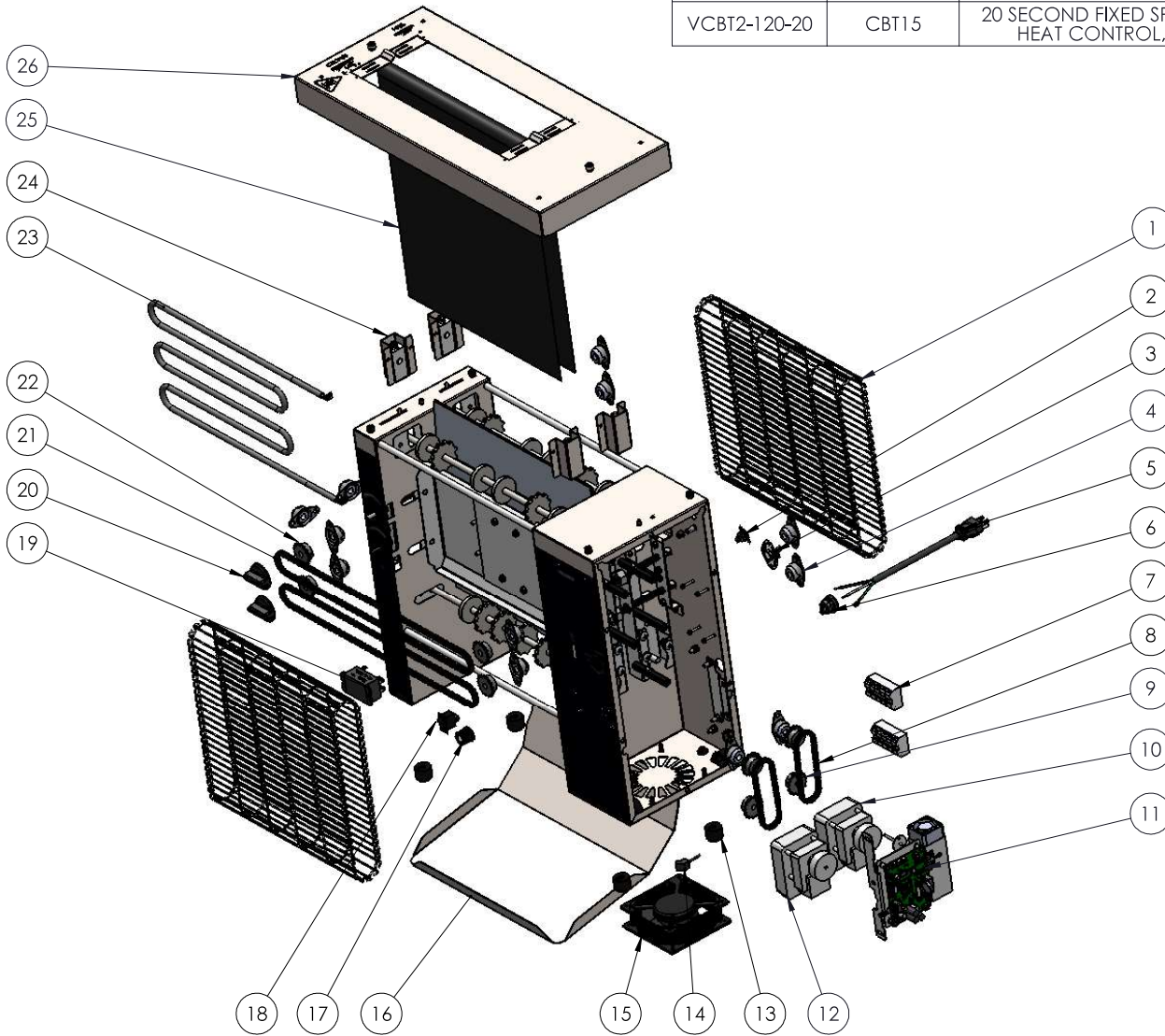




**VERTICAL CONTACT BUN TOASTER 120V - 20 SECOND**

ITEM NO.	MODEL NO.	DESCRIPTION	VOLTAGE	CURRENT	CORD PLUG
VCBT2-120-20	CBT15	20 SECOND FIXED SPEED, VARIABLE HEAT CONTROL, WIRE BELTS	120V	12A	5-15P



ITEM NO.	PART NUMBER	DESCRIPTION	QTY.
1	B210004	WIRE CONVEYOR BELT 14" X 26.5"	2
2	B401851	THERMOSTAT, DISC, 46C CLOSE	1
3	B405028	68C RESET SWITCH	1
4	B201101	BEARING ASSEMBLY, 3/8"	12
5	B401052	CORD,POWER,14/3,60" 5-15 PLUG	1
6	B400320	14 GA STRAIGHT STRAIN RELIEF	1
7	B401033	TERMINAL BLOCK 5 POSITION	2
8	B401864	DRIVE CHAIN MEDIUM SPEED	2
9	B401300	SPROCKET, 25B17-8MM	2
10	B401860	DRIVE MOTOR, 120V CW	1
11	B401837	VCT CONTROL KIT	1
12	B401861	DRIVE MOTOR, 120V CCW	1
13	351775-1	KIT, FOOT, VBL, 1.00" OD, 20MM LG	1
14	B401060	CORD,FAN,HP-75.24-A	1
15	B401211	MOTOR, FAN	1
16	B310009	VCT TOAST CHUTE	1
17	B405019	SILVER PUSH-ON KNOB W/ SET SCREW	1
18	719124	SWITCH, ROCKER SPST 10A 125V	1
19	B401224	RELAY AC 120V	1
20	351788-06-1	CONTROL KNOB	2
21	B401810	VCT ROLLER CHAIN	2
22	B401303	SPROCKET,25B17-3/8	6
23	B401819	1440W 120V ELEMENT	1
24	B400110	VCBT SPRING KIT	4
25	B401325	RELEASE SHEET (INSTALLED)	1
26	B400111	VCBT TOP COVER KIT	1