



## EVERPURE® EVERPURE® 7SI INSURICE® SERIES SYSTEMS



Insurice Single 7SI System



Insurice Twin - 7SI System



Insurice Triple - 7SI System



Insurice Quad - 7SI System

### SELECTING A LOCATION

1. Give consideration to the weight of the unit when operating (filled with water). Operating weights of the Insurice Systems are:
  - Insurice Single - 7SI - 9 lbs (4.0 kg)
  - Insurice Twin - 7SI - 19 lbs (8.5 kg)
  - Insurice Triple - 7SI - 27 lbs (12 kg)
  - Insurice Quad - 7SI - 36 lbs (20 kg)
2. The location should allow for:
  - Minimum clearance of 2½" under the cartridge(s) so it can be lowered for removal and replacement.
  - Adequate space for "in" and "out" water line connections.
  - Be near a drain for flushing and near a 110V outlet if the accessory (sold separately) Everguard™ Low Pressure Alarm is used. See Step 5.
3. If used in conjunction with the Everpure SR-X Feeder, the SR-X should be mounted after the Insurice Series Filter and as near the equipment as possible. If possible, keep at least 6" available to the left and the right of the Insurice System in the event poor quality water conditions require the installation of the optional Everpure E-Series Prefilter.

### OPERATING SPECIFICATIONS

- For cold water use only.
- Operating Temperature: 35 – 100°F (2 – 38°C)
- Min.-Max. Working Pressure: 10-125 psi (0.7-8.6 bar), non-shock
- Flow Rate:

System	Replacement Cartridge	Flow Rate	Capacity
Insurice Single - 7SI	7SI	3.5 gpm (13.25 Lpm)	25,000 gal. (94,635 L)*
Insurice Twin - 7SI	7SI	7.0 gpm (26.50 Lpm)	50,000 gal. (189,271 L)*
Insurice Triple - 7SI	7SI	10.5 gpm (39.75 Lpm)	75,000 gal. (283,906 L)*
Insurice Quad - 7SI	7SI	14.0 gpm (53.00 Lpm)	100,000 gal. (378,541 L)*

\*As tested by Everpure

### INSTALLATION INSTRUCTIONS

1. Use the predrilled mounting holes in the manifold bracket as guides. Mark and drill anchor holes. Mount securely. See Figures 1 – 4.
2. Shut off power to equipment.
3. Connect outlet port of the Insurice System to equipment served. Always use an NSF approved pipe dope or Teflon® tape at all connections. Use a backup wrench on all fittings while connecting to avoid excessive stress on the system components.  
**Note:** If the optional E-Series Prefilter is used, install a manual shut-off valve leading to the system for servicing.
4. Connect minimum 3/8" water line to the Insurice Single System inlet. Use a minimum 1/2" line for other systems.

## INSTALLATION INSTRUCTIONS (continued)

- Connect tubing to flushing valve and run to drain. The cross fitting has a flushing valve installed on the bottom.  
**Note:** Some municipal plumbing codes and good sanitary practices require an air gap at the drain termination point.
- Install the cartridge(s) into the Insurice head (s) following directions on the cartridge label or as shown in the Cartridge Change illustrations.
- Turn on water to filter and check for leaks.
- Flush the cartridge by running water through at full force for ten (10) minutes. This will set the filtering media and purge air and fines, insuring maximum filter life.
- After flushing, close the flushing valve, turn on power to equipment and plug the LPA (if so equipped) into the electrical outlet. See illustrations.

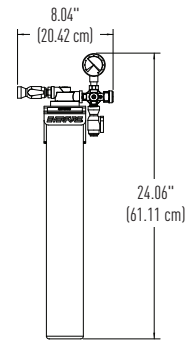
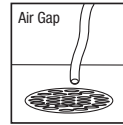


Figure 1 - Insurice Single - 7SI System

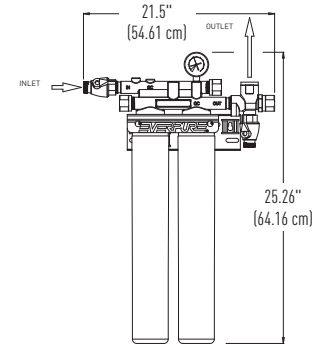


Figure 2 - Insurice Twin - 7SI System

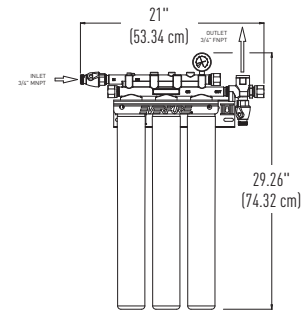


Figure 3 - Insurice Triple - 7SI System

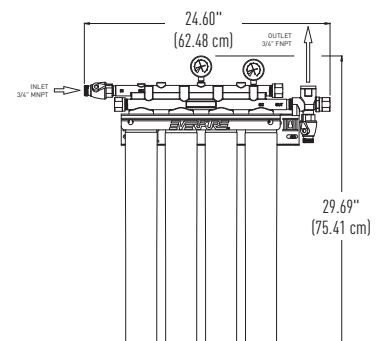


Figure 4 - Insurice Quad - 7SI System

## FLUSHING

For maximum life, all carbon filter cartridges must be flushed for ten (10) minutes at full flow before use.

**ALL NEW CARTRIDGES MUST BE FLUSHED AFTER EACH CARTRIDGE CHANGE BEFORE BEING PUT INTO SERVICE!**

If the cartridges are new, have been properly flushed and both needle and follower register inadequate pressure, or the LPA is sounding, you may be experiencing inadequate water pressure or some restriction may exist in the inlet water line. In either case, the incoming water pressure must be improved to receive optimum filter life.

COMPLETE CARTRIDGE CHANGE INSTRUCTIONS CAN BE FOUND ON THE FILTER CARTRIDGE LABEL.

## CARTRIDGE CHANGE DETERMINATION

Follow the change instructions provided with the cartridge. Replace filter cartridges when capacity is reached, or when flow becomes inadequate, but at least annually. All filter cartridges on multiple cartridge systems should be changed at the same time. The system pressure gauge or accessory (sold separately) Everguard Low Pressure Alarm (LPA) provide a quick, simple means of determining when the filter cartridge(s) should be checked. Installed on the system outlet manifold, the gauge or LPA can be used to monitor both dynamic (flowing) and static (line) pressure. The cartridge(s) should be changed when the pressure gauge needle is in the red area while equipment is in operation, and yet the needle shows adequate line pressure between cycles. Observe the needle during the next equipment on cycle. If the needle registers adequate pressure, it can be assumed that the temporary low-pressure condition was caused by a brief power failure or other incoming pressure disruption. If the low pressure condition is not due to an external condition, check/change the prefilter first. If the low pressure condition is still not corrected, change the filter cartridges.

## REPLACEMENT PARTS

Contact your local Pentair® Everpure® Dealer for filter cartridges or system replacement parts.

Part Number	Description	Part Number	Description	Part Number	Description
System Replacement Parts					
EV3114-09	Outlet Pressure Gauge (All Systems)	EV3114-07	Inlet Valve (Twin, Triple & Quad)	EV9606-01	7SI Replacement Cartridge 1 PK
EV3114-09	Inlet Pressure Gauge (Quad System Only)	EV3102-01	Insurice Single Flush Valve		
EV2102-01	Inlet Valve (Single Only)	EV3114-07	Flushing Valve (Twin, Triple & Quad)		

## NOTES

This installation must comply with all applicable state and local regulations.

Do not use with water that is microbiologically unsafe or of unknown quality without adequate disinfection before or after the system. Systems certified for cyst reduction may be used on waters that may contain filterable cysts.

For installations in Massachusetts, the Commonwealth of Massachusetts Plumbing Code 248 CMR shall be adhered to. Consult your licensed plumber for installation of the system. This system and its installation must comply with state and local regulations.

Not for residential use. For food service applications only.

Testing was performed under standard laboratory conditions.

Effectively filters dirt and particles as small as ½ micron in size by mechanical means.

NSF/ANSI Standard 53 Certified to reduce Cysts such as *Cryptosporidium* and *Giardia* by mechanical means.

EPA Est. No.002623-IL-002.



Insurice 7SI systems are Tested and Certified by NSF International against NSF/ANSI Standard 42 and 53 for the reduction of:

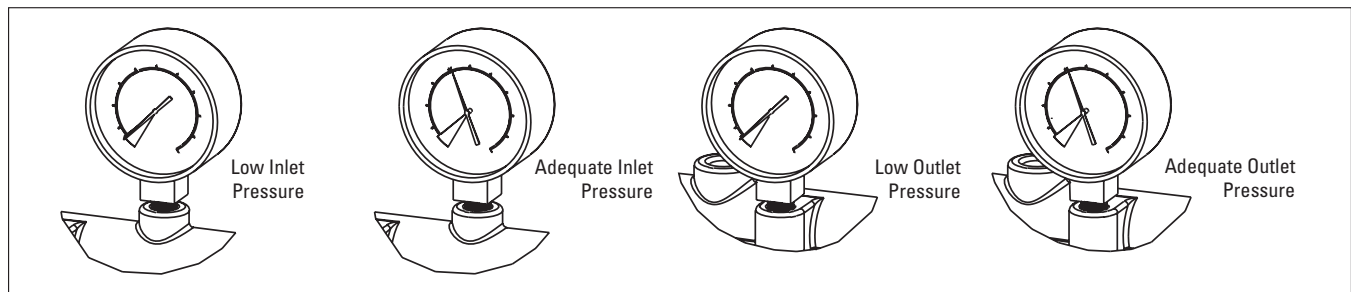
STANDARD NO. 42 –  
AESTHETIC EFFECTS

Mechanical Filtration  
Nominal Particulate Class I

STANDARD NO. 53 –  
HEALTH EFFECTS

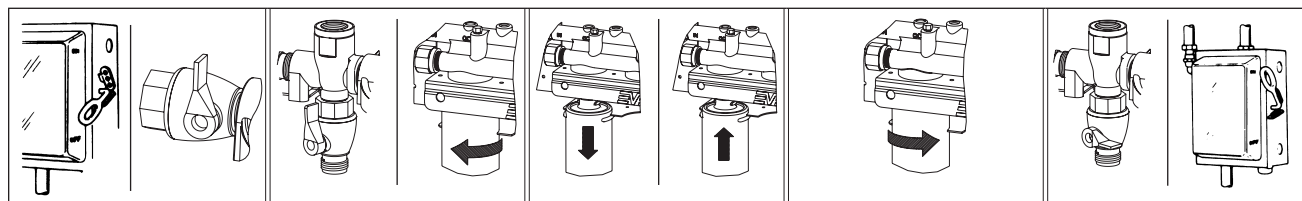
Mechanical Filtration  
Cyst

## PRESSURE GAUGES



## CARTRIDGE CHANGE & FLUSHING PROCEDURES

### Everpure® Filter Cartridge Change



1. Shut off power to equipment. Shut off inlet water ahead of system.
2. Open flushing valve to relieve pressure.
3. Hold head firmly and push upward. Turn cartridge to left until it stops.
4. Pull cartridge downward and out of head.
5. Hold head firmly. Align cartridge lug with label. Insert new cartridge firmly into head.
6. Turn cartridge to the right 90° rotation stops.
7. Repeat steps 3-6 for remaining cartridges.
8. Hold head firmly. Align cartridge lug with label. Insert new cartridge firmly into head.
9. Turn power on to equipment

# LIMITED WARRANTY

## COMMERCIAL WATER TREATMENT EQUIPMENT

You have just purchased one of the finest water treatment units made. As an expression of confidence in this product, Pentair Filtration Solutions, LLC ("PFS") offers the following product warranty. This product is warranted against material defects in materials and workmanship to the original end-user when installed in accordance with the PFS specifications. The warranty period commences on the date of purchase and is administered as follows:

**For a period of ONE YEAR Replaceable elements (i.e., filter & water treatment cartridges)\***

**For a period of FIVE YEARS The entire system (excluding replaceable elements)**

The unit must be used in operating conditions that conform to PFS's recommended guidelines. This warranty will not apply if the unit has been modified, repaired or altered by someone not authorized by PFS.

**If a part described above is found to have a material defect in materials or workmanship within the specified warranty period, you should notify Pentair® Everpure technical service at the phone number listed below. Any part found materially defective within the terms of this warranty will be repaired or replaced (at PFS's discretion) by your local dealer or Pentair Everpure technical service. You pay only freight from our factory and local dealer charges. Any item repaired or replaced pursuant to this warranty will be covered under the original warranty terms of the system.**

PFS is not responsible for damage caused by accident, fire, flood, freezing, Act of God, misuse, misapplication, neglect, oxidizing agents (such as chlorine, ozone, chloramines and other related components), alteration, installation or operation contrary to our printed instructions, or by the use of accessories or components which do not meet PFS's specifications. Refer to the specifications section in the Installation and Operating manual for approved application parameters.

Our product performance specifications are furnished with each water treatment unit. TO THE EXTENT PERMITTED BY LAW, EVERPURE DISCLAIMS ALL IMPLIED WARRANTIES, INCLUDING WITHOUT LIMITATION WARRANTIES OF MERCHANTABILITY AND FITNESS FOR PARTICULAR PURPOSE; TO THE EXTENT REQUIRED BY LAW, ANY SUCH IMPLIED WARRANTIES ARE LIMITED IN DURATION TO THE PERIOD SPECIFIED ABOVE FOR THE ENTIRE WATER TREATMENT UNIT.

As a manufacturer, we do not know the characteristics of your water supply or the purpose for which you are purchasing this product. The quality of water supplies may vary seasonally or over a period of time, and your water usage rate may vary as well. Water characteristics can also differ considerably if this product is moved to a new location. For these reasons, we assume no liability for the determination of the proper equipment necessary to meet your requirements, and we do not authorize others to assume such obligations for us. Further, we assume no liability and extend no warranties, express or implied, for the use of this product with a non-potable water source or a water source which does not meet the conditions for use described in the owner's guide or performance data sheet for this product.

OUR OBLIGATIONS UNDER THIS WARRANTY ARE LIMITED TO THE REPAIR OR REPLACEMENT (AT PFS'S DISCRETION) OF THE FAILED PARTS OF THE WATER TREATMENT UNIT, AND WE ASSUME NO LIABILITY WHATSOEVER FOR DIRECT, INDIRECT, INCIDENTAL, CONSEQUENTIAL, SPECIAL, GENERAL OR OTHER DAMAGES.

Some states do not allow the exclusion of implied warranties or limitations on how long an implied warranty lasts, so the above limitation may not apply to you. Similarly, some states do not allow the exclusion of incidental or consequential damages, so the above limitation or exclusion may not apply to you. This warranty gives you specific legal rights, and you may also have other rights which vary from state to state.

\*Warranty applies to material defects in materials & workmanship only.



Pentair Everpure Technical Support:  
Phone: 800.942.1153 (US Only) • 630.307.3000  
Email: [servicespecialist@pentair.com](mailto:servicespecialist@pentair.com)

### FILTRATION & PROCESSING SOLUTIONS

EVERPURE-SHURFLO WORLD HEADQUARTERS, 1040 MUIRFIELD DRIVE, HANOVER PARK, IL 60133 USA • [WWW.EVERPURE.COM](http://WWW.EVERPURE.COM)  
800.942.1153 (US ONLY) • 630.307.3000 MAIN • 630.307.3030 FAX • [CSEVERPURE@PENTAIR.COM](mailto:CSEVERPURE@PENTAIR.COM) EMAIL

EVERPURE-SHURFLO AUSTRALIA, 1-21 MONASH DRIVE, DANDENONG SOUTH, VIC 3175, AUSTRALIA  
011.1300.576.190 TEL • 011.61.39.562.7237 FAX • [AU.EVERPURE@PENTAIR.COM](mailto:AU.EVERPURE@PENTAIR.COM) EMAIL

EVERPURE-SHURFLO CHINA, 21F CLOUD 9 PLAZA, NO 1118, SHANGHAI, 200052, CHINA  
86.21.3211.4588 TEL • 86.21.3211.4580 FAX • [CHINA.WATER@PENTAIR.COM](mailto:CHINA.WATER@PENTAIR.COM) EMAIL

EVERPURE-SHURFLO INDIA, GREEN BOULEVARD, B-9/A, 7TH FLOOR - TOWER B SECTOR 62, NOIDA - 201301  
91.120.419.9444 TEL • 91.120.419.9400 FAX • [INDIACUSTOMER@PENTAIR.COM](mailto:INDIACUSTOMER@PENTAIR.COM) EMAIL

EVERPURE-SHURFLO EUROPE, PENTAIR WATER BELGIUM BVBA, INDUSTRIEPARK WOLFSTEE, TOEKOMSTLAAN, 30 B-2200 HERENTALS, BELGIUM  
+32.(0).14.283.500 TEL • +32.(0).14.283.505 FAX • [SALES@EVERPURE-EUROPE.COM](mailto:SALES@EVERPURE-EUROPE.COM) EMAIL

EVERPURE-SHURFLO JAPAN INC., HASHIMOTO MN BLDG. 7F, 3-25-1 HASHIMOTO, MIDORI-KU, SAGAMIHARA-SHI KANAGAWA 252-0143, JAPAN  
81.(0)42.775.3011 TEL • 81.(0)42.775.3015 FAX • [INFO@EVERPURE.CO.JP](mailto:INFO@EVERPURE.CO.JP) EMAIL

EVERPURE-SHURFLO SOUTHEAST ASIA, SOUTHEAST ASIA, 390 HAVELOCK ROAD, #04-01 KING'S CENTRE, SINGAPORE 169662  
65.6768.5800 TEL • 65.6737.5149 FAX • [CSEVERPURE@PENTAIR.COM](mailto:CSEVERPURE@PENTAIR.COM) EMAIL

All Pentair trademarks and logos are owned by Pentair, Inc. or its affiliates. All other registered and unregistered trademarks and logos are the property of their respective owners. Because we are continuously improving our products and services, Pentair reserves the right to change specifications without prior notice. Pentair is an equal opportunity employer.