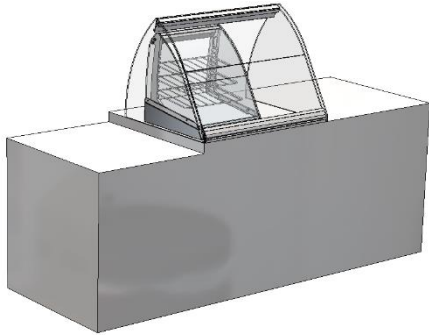


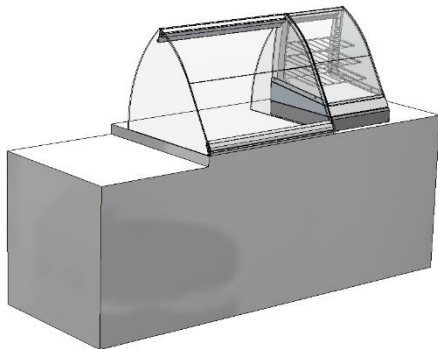
## 69700A Bakery Case Riser Extension Installation

This bakery case is supplied with a riser extension to accommodate three different daycover set-ups. The first location is under the daycover next to the hot well. The second is next to the daycover with a 32" countertop height. The last is next to the daycover with a 30" countertop height.



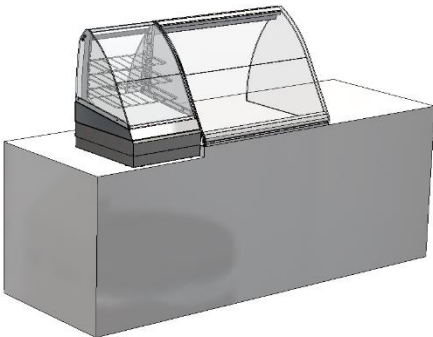
### Option #1 – Under Daycover

Remove the bakery case from the packaging. Install the six feet to the bottom of the unit and place under the daycover. The additional riser extension, spacers, and fasteners can be discarded.



### Option #2– Next to Daycover with 32" Countertop Height

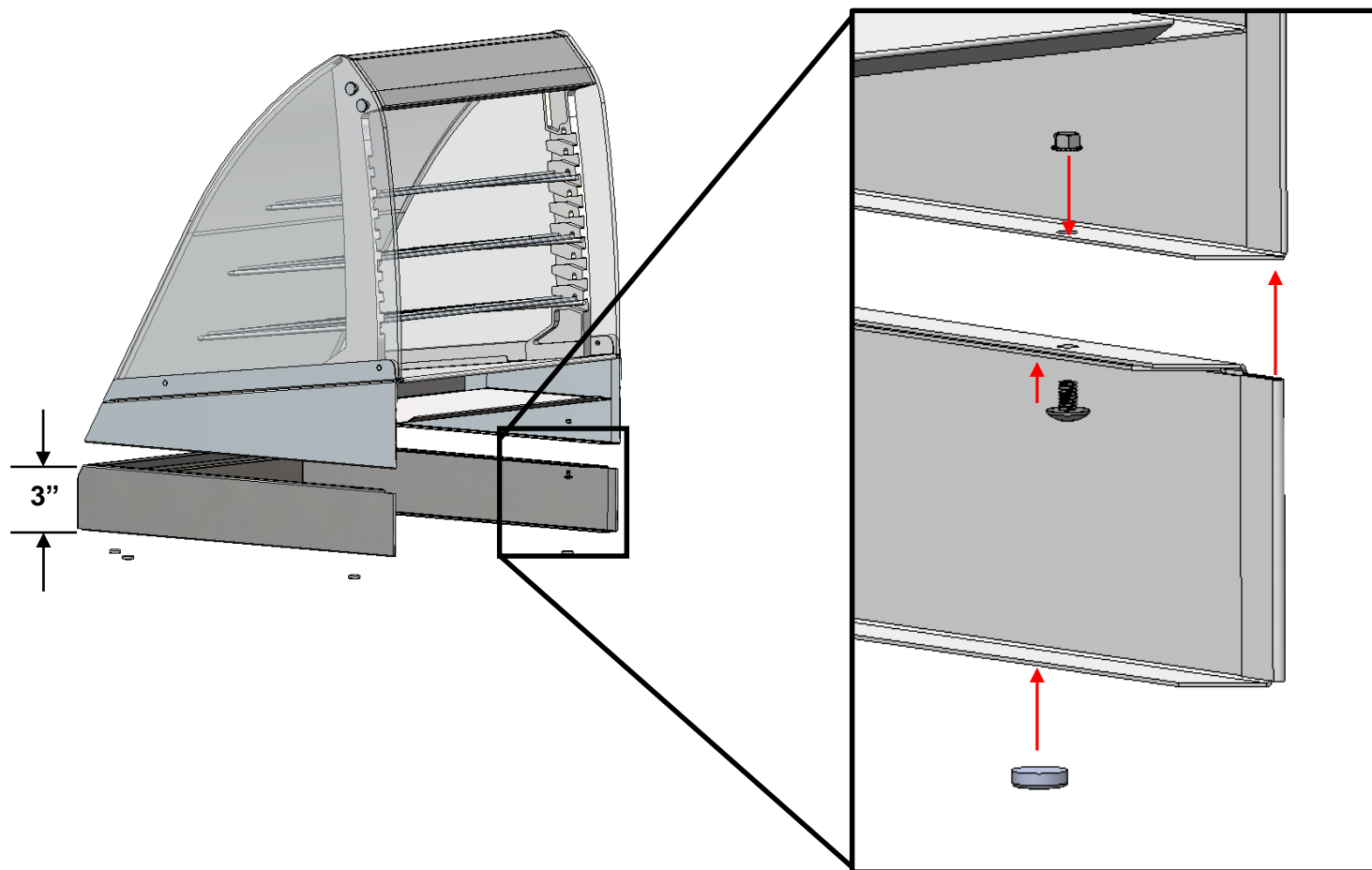
Remove the bakery case and riser extension from the packaging. Measure the height of the countertop to confirm the 32" height. Place the bakery case on its side. Using the four provided 1/2" long screws and nuts, attach the riser extension to the bottom of the bakery case. See figure #1 on page two. Install the six feet to the bottom of the riser extension and place the bakery case next to the daycover.



### Option #3 – Next to Daycover with 30" Countertop Height

Remove the bakery case and riser extension from the packaging. Measure the height of the countertop to confirm the 30" height. Place the bakery case on its side. Using the four provided screws, nuts, and 2" spacers, attach the riser extension to the bottom of the bakery case. Note that the riser extension will telescope apart to accept the spacer between the two pieces of the extension. See figure #2 on page two. Install the six feet to the bottom of the riser extension and place the bakery case next to the daycover.

**Figure #1 – 32" Countertop Height**



**Figure #2 – 30" Countertop Height**

