

16 GAUGE STAINLESS STEEL ONE COMPARTMENT SINK WITH ONE DRAINBOARD (RIGHT)

ITEM #: _____ QUANTITY: _____

PROJECT: _____

APPROVAL: _____

DATE: _____



FEATURES

- Made of high-quality 16 gauge, type 304 stainless steel
- Galvanized 1 $\frac{5}{8}$ " steel legs with sockets
- Adjustable bullet feet for added stability
- Faucet holes pre-punched on 8" centers (faucet sold separately)
- 3 $\frac{1}{2}$ " IPS drain connection
- Rolled edge contains splashes and overflow

SPECIFICATIONS

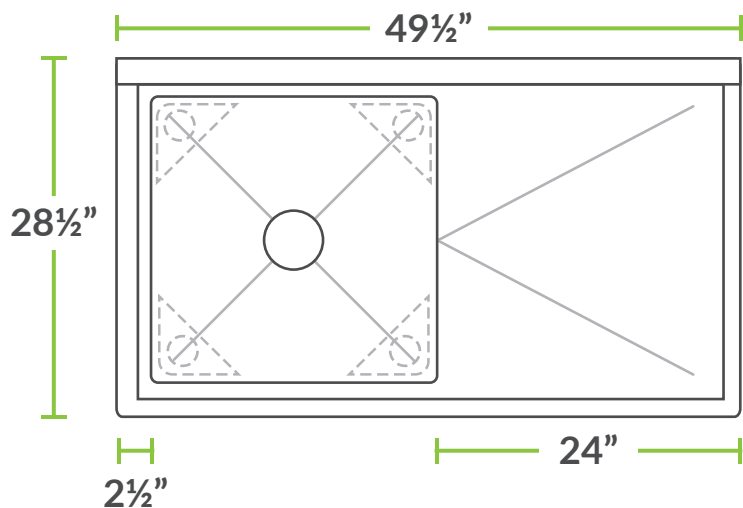
ITEM	LENGTH	DEPTH	HEIGHT (Total)	HEIGHT (Work)	BOWL DEPTH	BOWL L to R	BOWL F to B	NUMBER OF DRAINBOARDS	SIDE	NET WEIGHT
600S1232324GRT	49 $\frac{1}{2}$ "	28 $\frac{1}{2}$ "	43 $\frac{3}{4}$ "	34 $\frac{3}{4}$ "	12"	23"	23"	1	Right	26.32 LB.



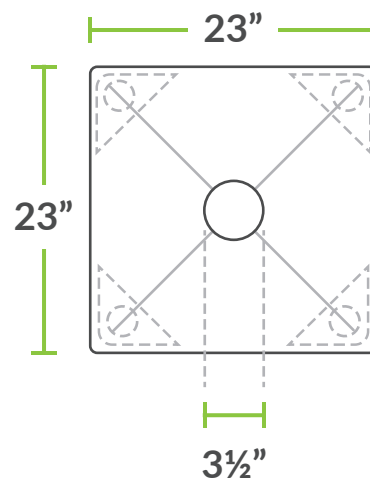
16 GAUGE STAINLESS STEEL
ONE COMPARTMENT SINK
WITH ONE DRAINBOARD (RIGHT)



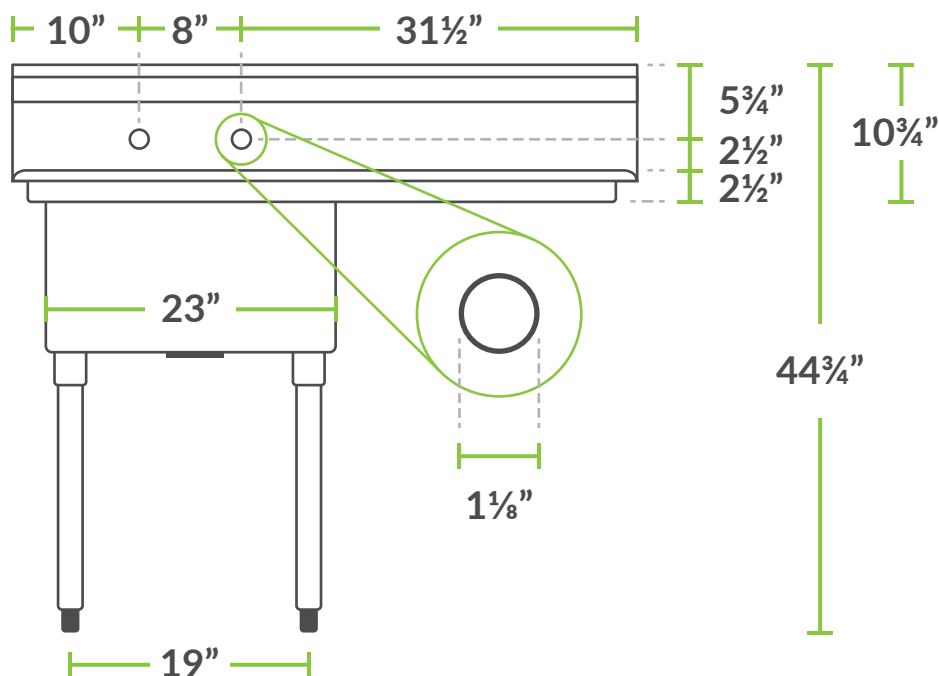
TOP



BOWL



FRONT



SIDE

