

# MODEL H COMMERCIAL TENDERIZING MACHINE

(Item # 201504R2)



The Model H meat tenderizer was designed for use on any boneless cut of meat. It is mostly used on sub-primal cuts before they are hand sliced into individual portions at a restaurant. The Model H has 544 stainless steel blades that cut the connective tissue of the meat without tearing or altering its appearance. It makes meat more tender and flavorful, increases plate coverage, enhances marinade absorption, promotes even cooking throughout uneven thicknesses and reduces cooking time up to 40%.

## **ITEMS INCLUDED WITH YOUR PURCHASE**

1. Tenderizing Machine (box 1 of 3 )
2. NSF Kit (box 1 of 3)
3. Mounting Bolts (box 1 of 3)
4. White Meat Tray with Handle (box 2 of 3)
5. Optional - Stainless Steel Stand with Wheels (box 3 of 3)

## **UNPACKING**

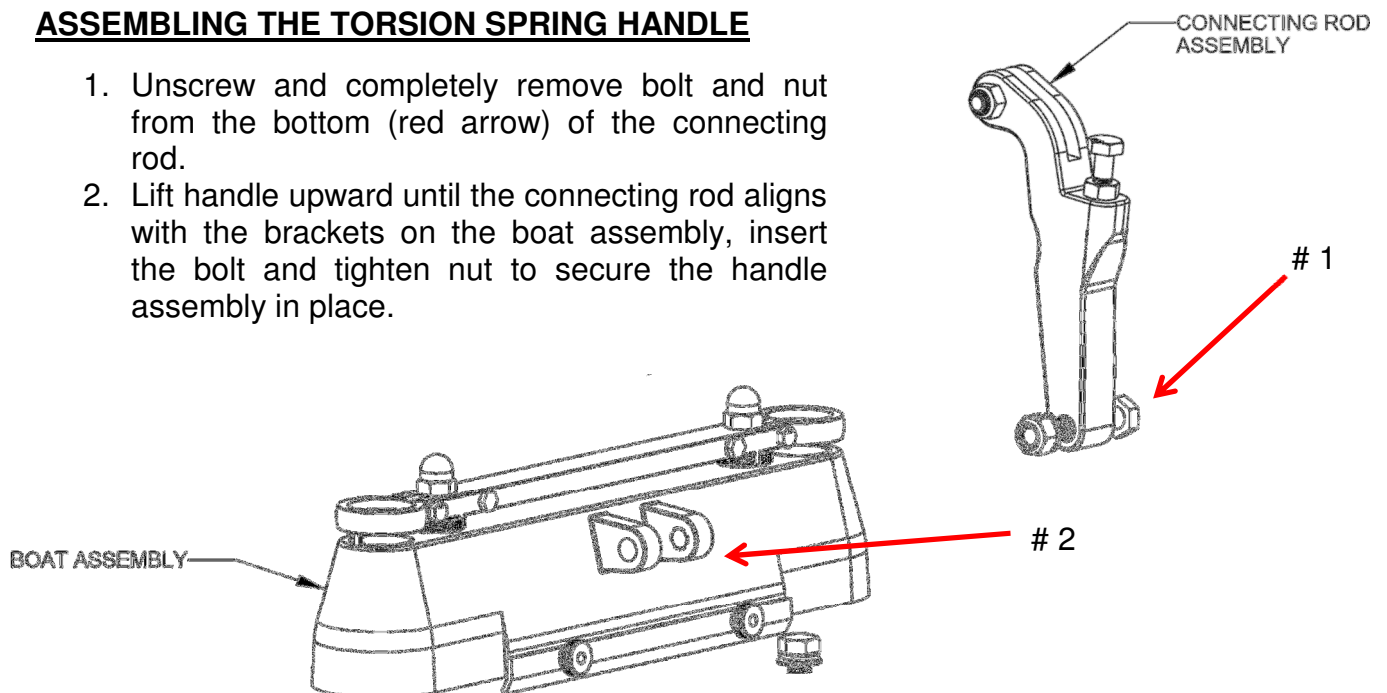
1. Remove the base machine from the crate / packaging and place on the floor or on a stable counter top.

## **MOUNTING OF TENDERIZER ON S/S STAND**

1. After assembling the s/s stand, engage the two locking wheels on the stand and then place the tenderizer on the stand. Align the four holes located in the outer corners of the tenderizers base with the four holes located on in each corner of the top of the s/s stand.
2. Use the mounting bolts (4), washers (4) and nuts (4), to secure the tenderizer to the s/s stand.
3. Use the tube of clear silicone provided in the NSF Kit to put a bead of silicone along the base edges of the tenderizer base where it touches the s/s stand to prevent water and debris from getting under the tenderizer's base.

## **ASSEMBLING THE TORSION SPRING HANDLE**

1. Unscrew and completely remove bolt and nut from the bottom (red arrow) of the connecting rod.
2. Lift handle upward until the connecting rod aligns with the brackets on the boat assembly, insert the bolt and tighten nut to secure the handle assembly in place.



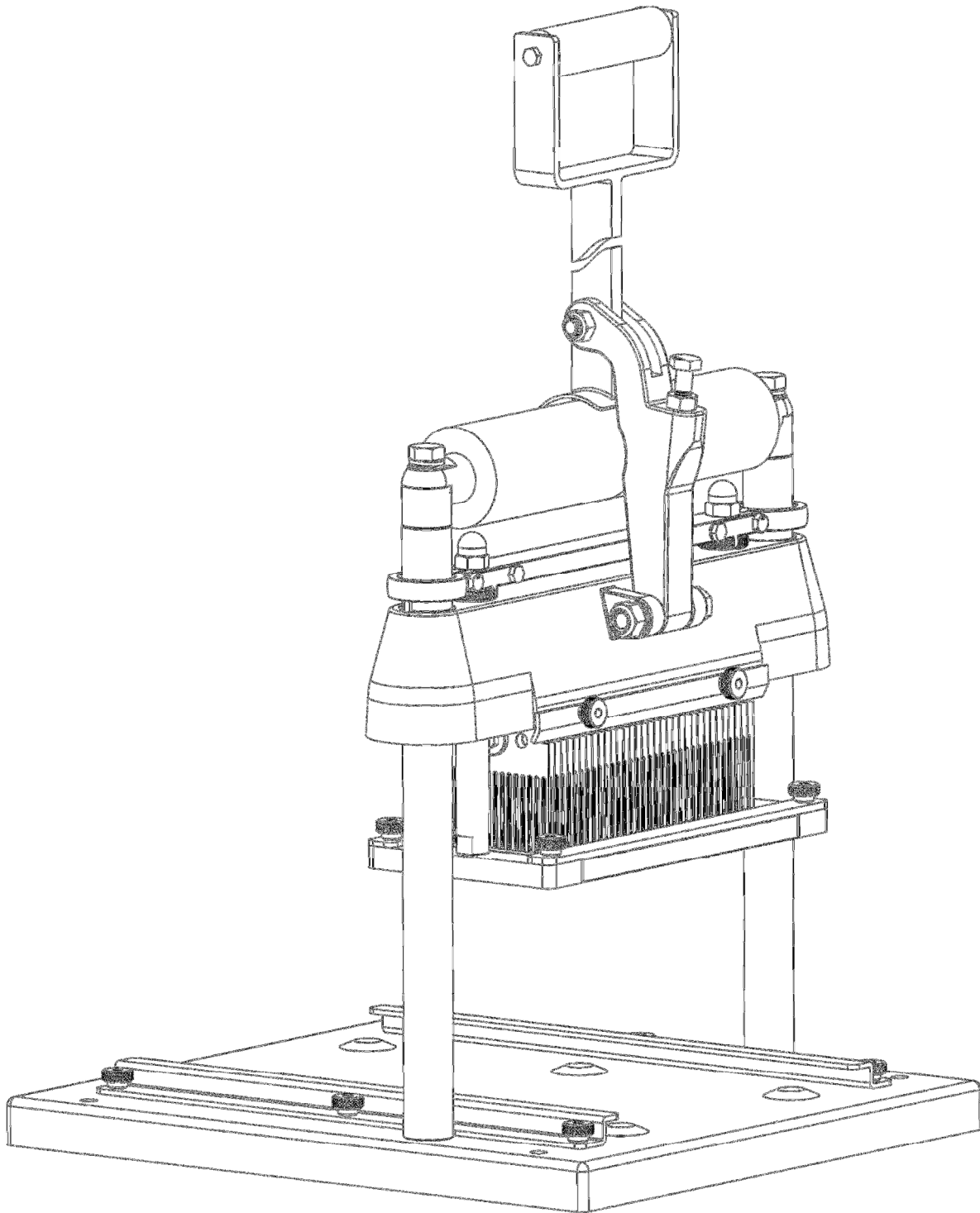
## **CLEANING THE MACHINE**

1. Remove 3 knurled nuts (D7-P40) located on the rear of the stripper frame assembly (D7).
2. Remove the rear hold down plate (D7-P39)
3. Remove 2 knurled nuts (D7-P40) located on the front hold down plate (D7-P41) of the stripper frame assembly (D7).
4. Lift and remove the front hold down plate (D7-41).
5. Remove the white plastic separator comb (D7-P43) by lifting and pulling it away from the blades.
6. To remove the blade set (D6) use protective gloves or a towel to hold the blade set (D6). Loosen the knurled nuts (D3-P13) that hold the dovetail bar (D3-P15). It is not necessary to completely remove the knurled nuts only to loosen them enough to remove the blade set (D6).
7. Remove the white meat tray with handle and wash it with soap & water.
8. The blade set (D6) and white plastic separator comb (D7-P43) should be rinsed with water to remove any pieces of meat. Then they can be washed in a dishwasher. Use a small s/s brush if necessary to clean in between blades and or comb fingers.
9. Clean the main body of the machine with soap and rinsed with water.
10. To assemble machine reverse disassembly steps 1-7.

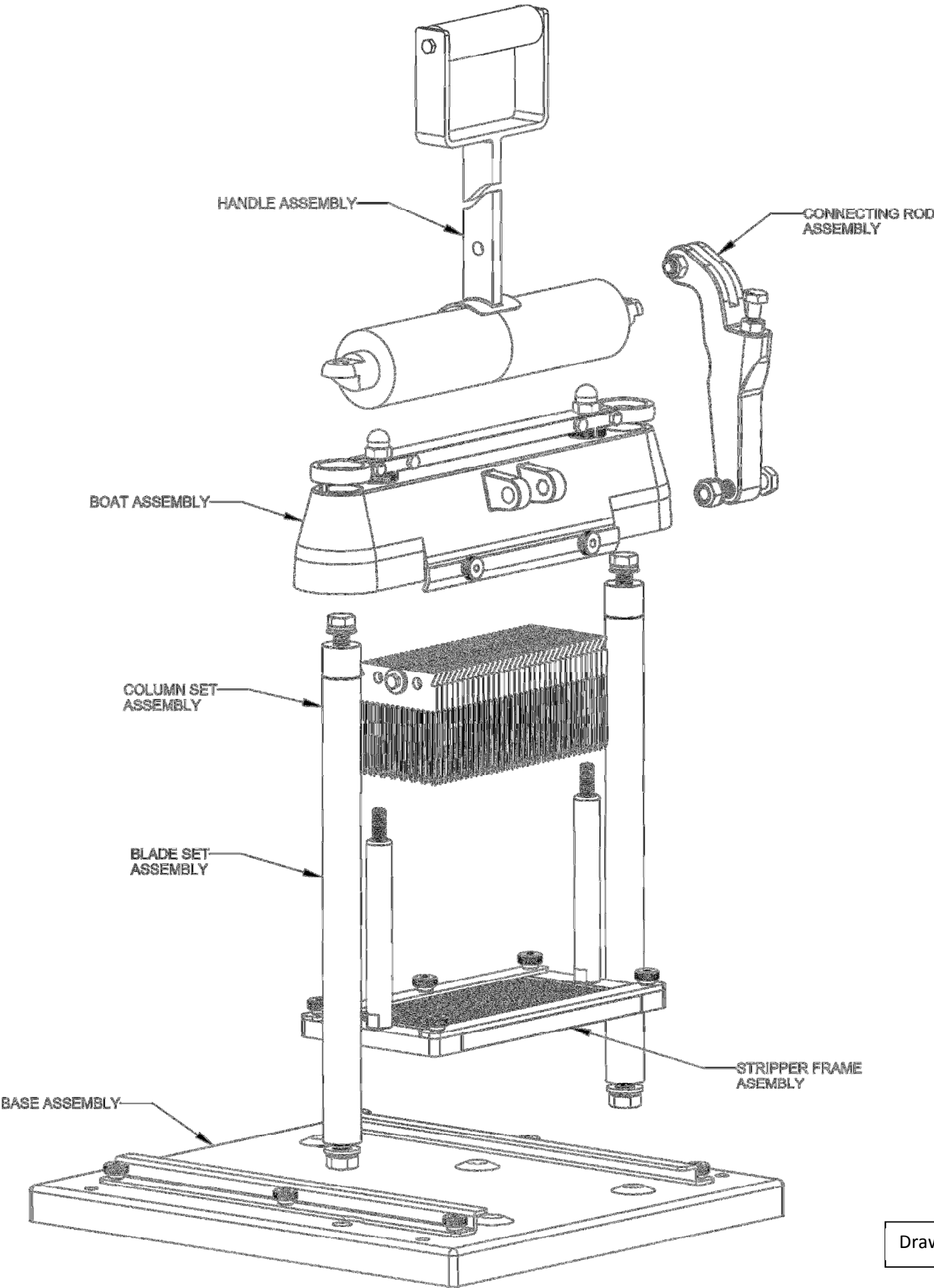
## **DAILY MAINTENANCE**

1. Check blade set for damage, light bends in the blades can be straightened using long nose pliers. If the blades cannot be repaired, contact Jaccard to replace the blade(s).
2. Check the white plastic separator comb (D7-P43) for damage.
3. Check stripper frame adjustment by measuring the distance between the top of the stripper frame (D2) and the bottom of the boat assembly (D2). This distance should be 3 1/8". [Note: This should be measured on both sides of the stripper frame columns (D7-P38)]. If adjustment has to be made, refer to *Technical Service Bulletin (TSB): 201504R2 - Boat Height Adjustment Step by Step*
4. Check stripper frame columns (D7-P38) to make sure they are securely fastened in the stripper frame (D2). [Apply thread locker (Loctite) to the threads on the stripper frame column (D7-P38) and tighten them with a 17mm end wrench or adjustable wrench]
5. Use mineral oil to lubricate the jamming rings (D3-P2), stripper frame columns (D7-P38) and the main columns (D5).
6. Check to make sure that the main column assemblies (D5) do not move.
  - a. [If column assemblies (D5) are loose, apply thread locker (Loctite) and tighten bolts (D5-P32) located under the base (D8) with a 22mm wrench].
7. Check to make sure that the knurled nuts (D7-P40) on the stripper frame assembly are tight.

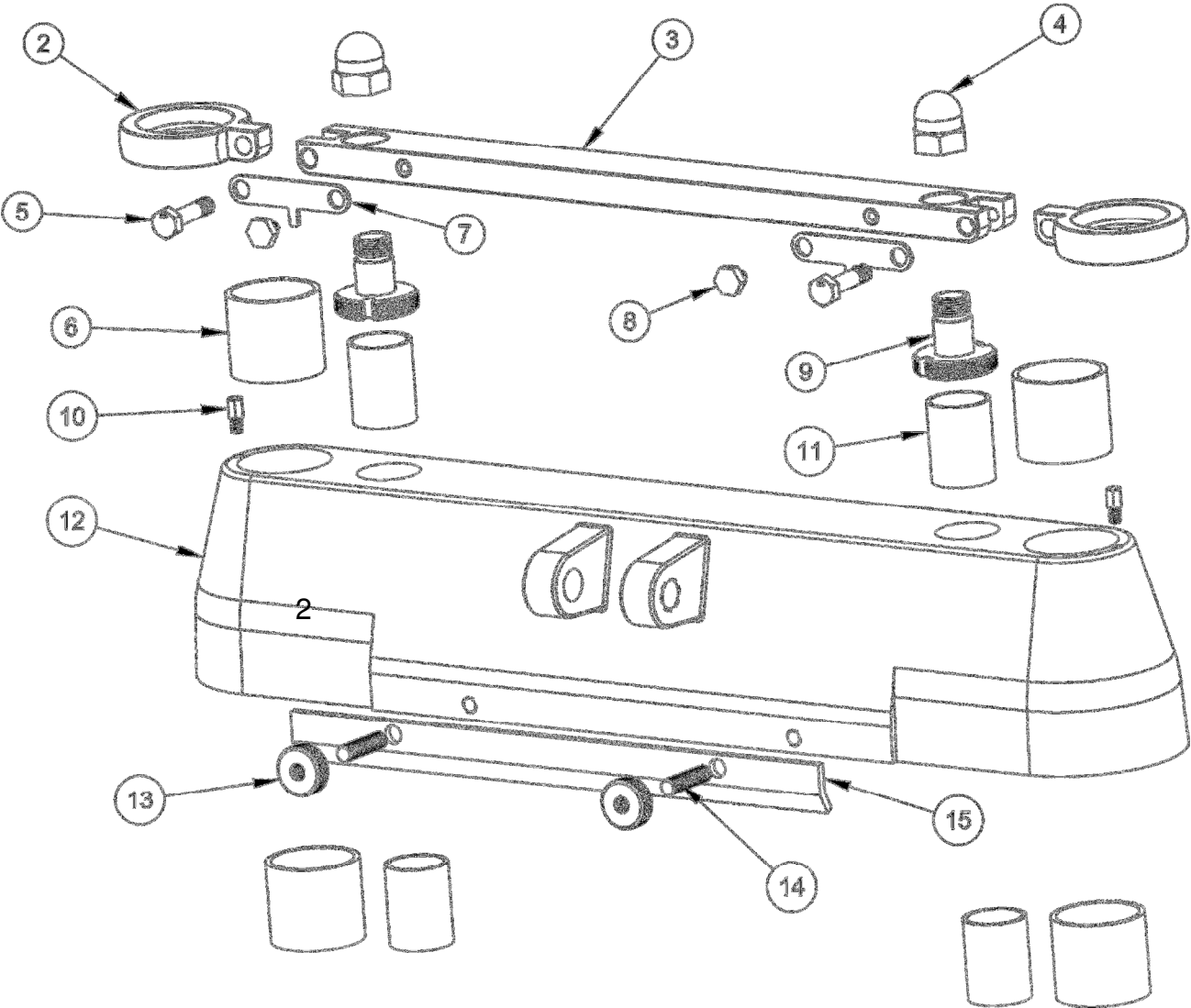
# Jaccard Model H Commercial Tenderizer



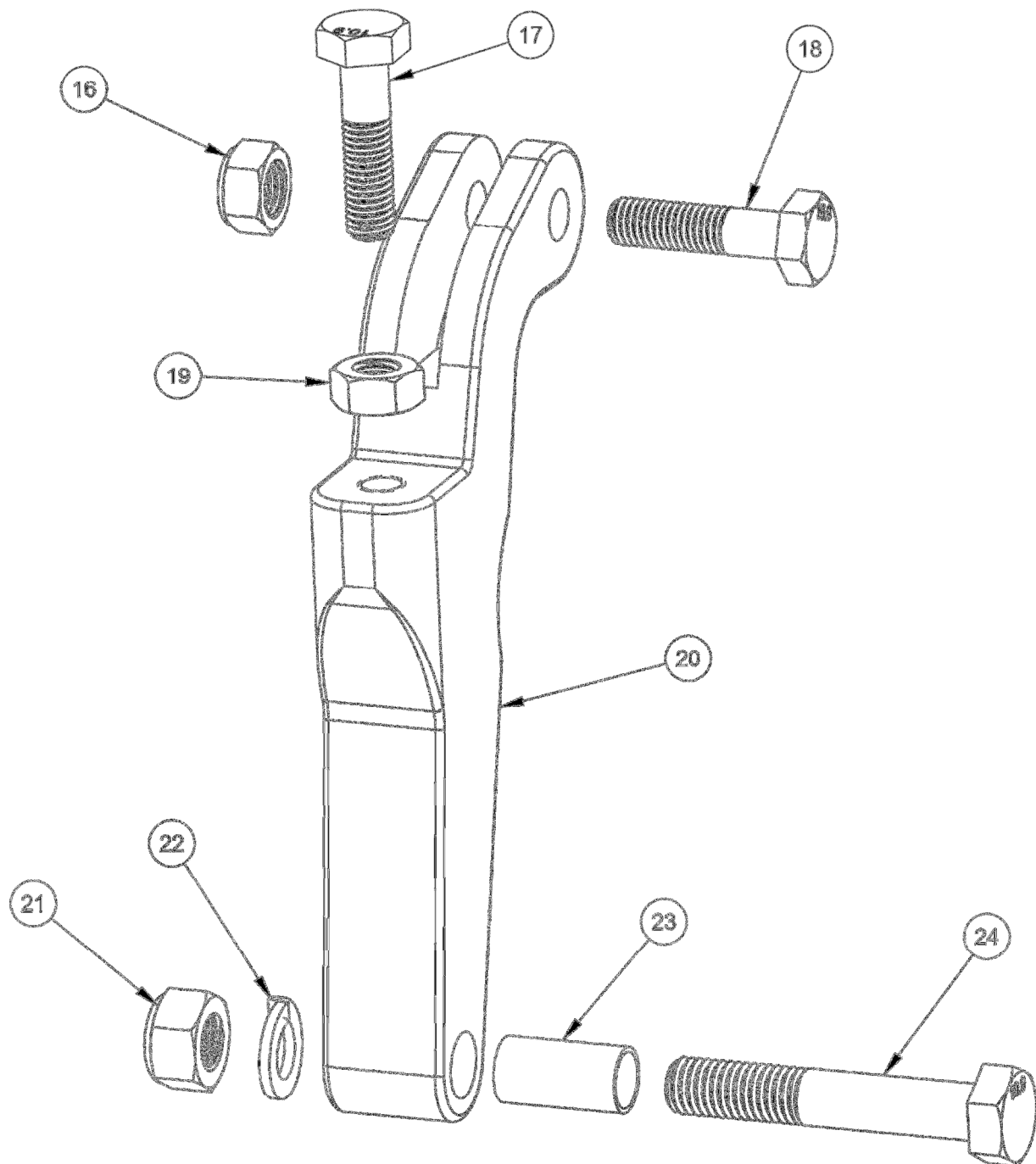
# Machine Assembly



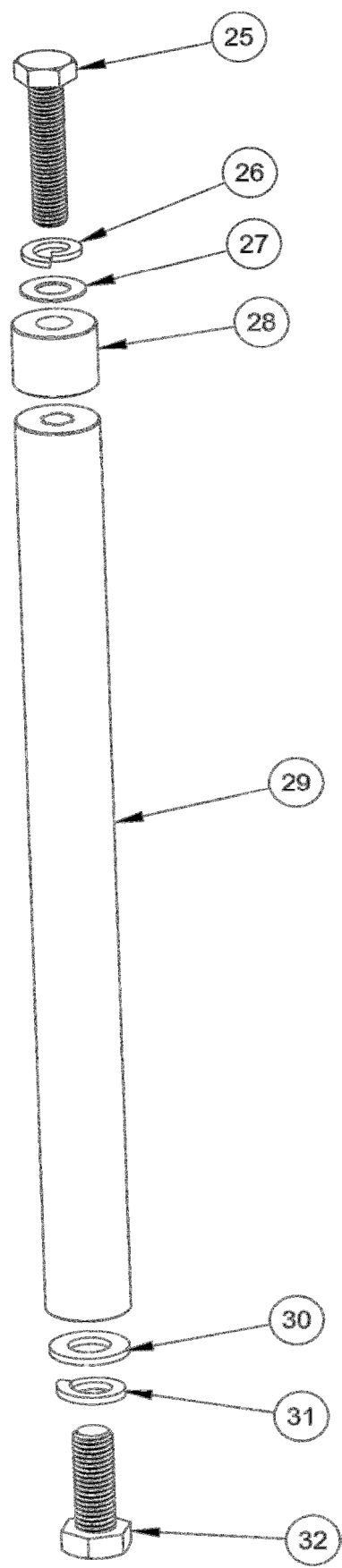
# Boat Assembly



# Connecting Rod Assembly

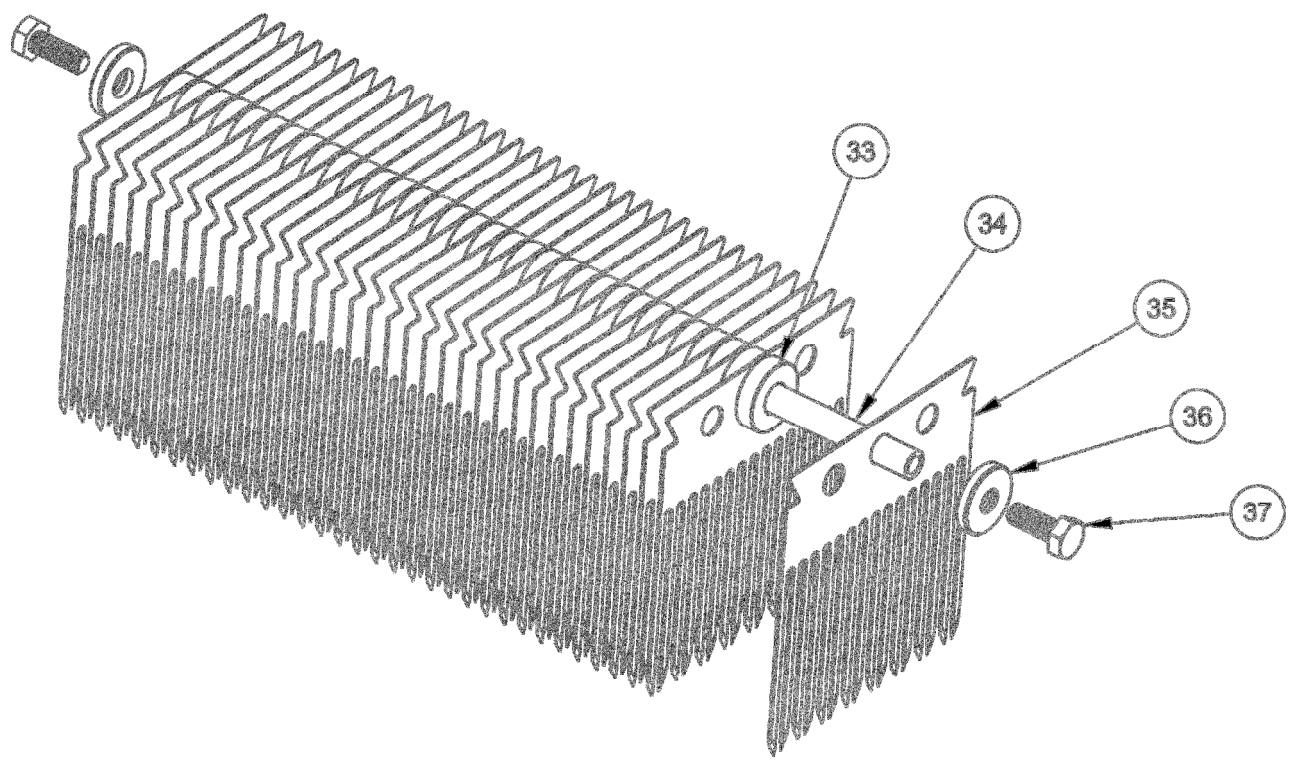


# Column Set Assembly

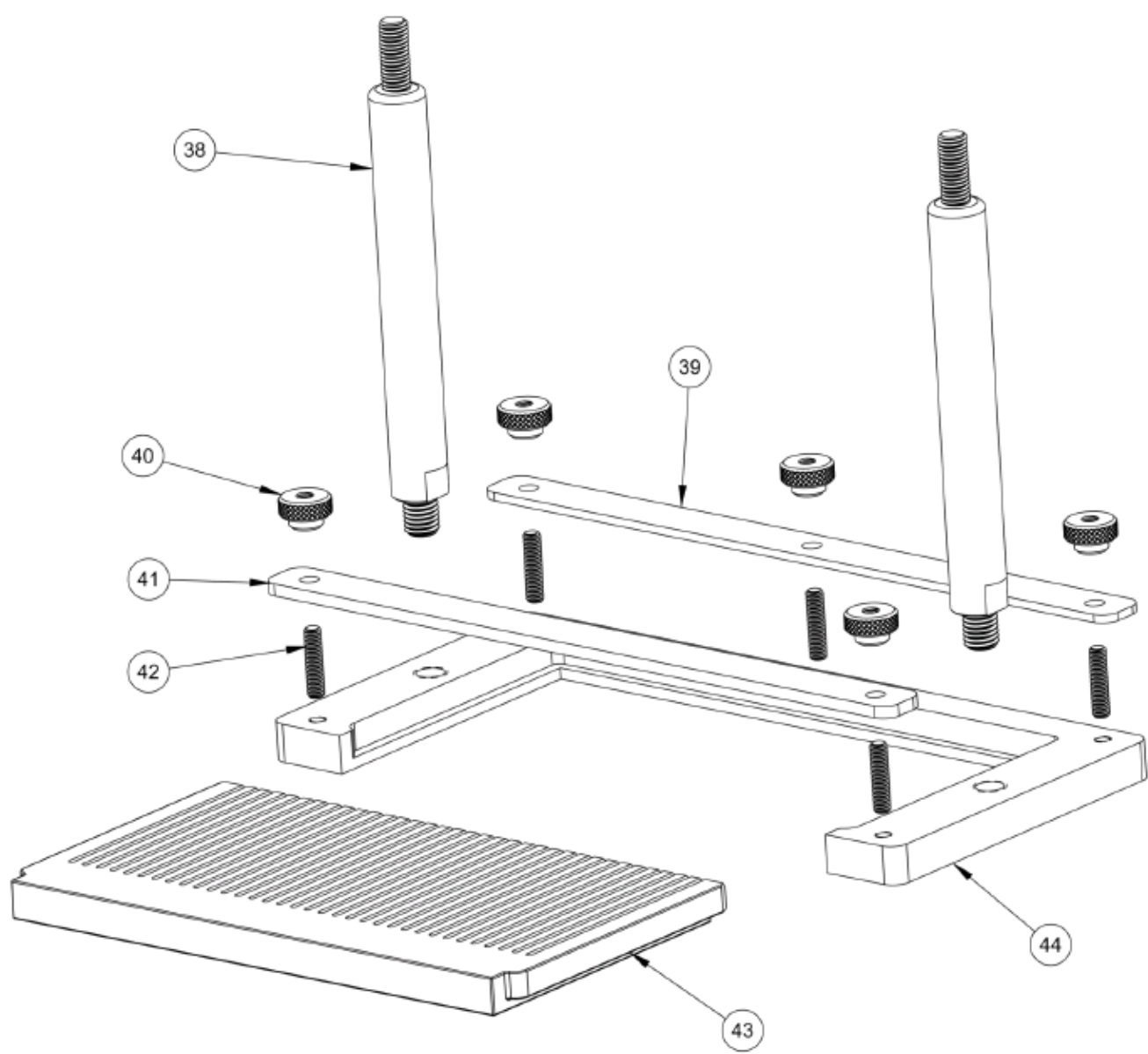




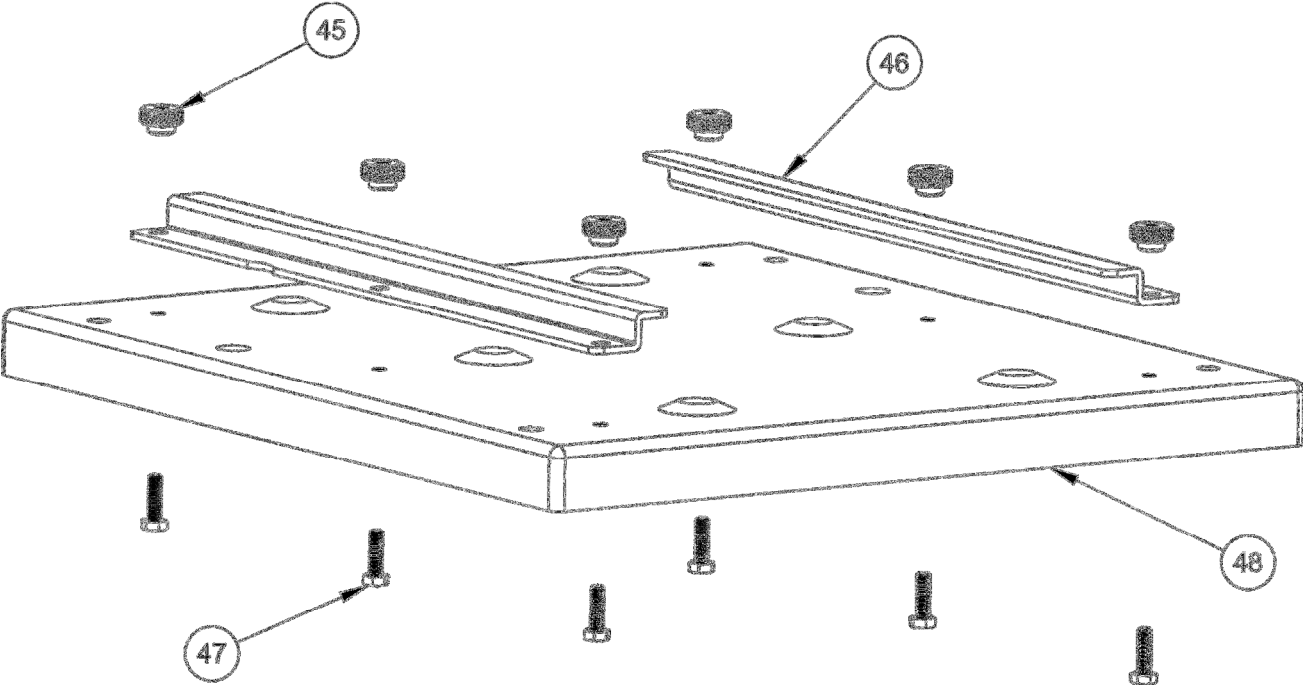
# Blade Set Assembly



# Stripper Frame Assembly



# Base Assembly



## 201504R2 MODEL H TENDERIZER BILL OF MATERIALS

Draw #	Item #	Part #	Description
--------	--------	--------	-------------

<b>D2 Handle Assembly</b>			
		4-71S	Handle Sub-Assembly

Draw #	Item #	Part #	Description
--------	--------	--------	-------------

<b>D3 Boat Assembly</b>			
D3	2	12H	Jamming Ring
D3	3	10HA	S/S Jamming Cross Bar
D3	4	21-22AE	Stainless Steel Adj. Screw Nut Assy.
D3	5	23N	S/S M10x26 Hex Bolt, Partial Thread
D3	6	27EA	Large Bushing
D3	7	58-59H	"T" Safety Locker
D3	8	116E	S/S M4x5 Hex Bolt, Full Thread
D3	9	21-22AE	Stainless Steel Adj. Screw Nut Assy.
D3	10	25E	Jamming Ring Stop Screw
D3	11	26AE	Small Bushing
D3	12	2-44-17-43-55HN	Boat w/ New Style Bushings
D3	13	11AE	S/S Knurled Thumb Nut
D3	14	NOT SOLD SEPARATELY	Stud Inserts
D3	15	11H	Removable Dovetail Bar

NOTE – Minimum order charge may apply if purchased separately

## 201504R2 MODEL H TENDERIZER BILL OF MATERIALS

Draw #	Item #	Part #	Description
--------	--------	--------	-------------

D4 Connecting Rod Assembly			
D4		201504-70SS	Connecting Rod Assembly Complete
D4	16	34H	M10 Nylon Lock Nut
D4	17	33H	S/S M10x40 Hex Head Bolt
D4	18	33H	S/S M10x40 Hex Head Bolt
D4	19	3940H	M10 Hex Nut
D4	20	70SS	Connecting Rod
D4	21	20AH	M12 Nylon Lock Nut
D4	22	51H	M12 Lock Washer
D4	23	18H	Bushing for #70SS
D4	24	19AH	S/S M12x70 Hex Bolt
D4	25	32AH	S/S M12x60 Hex Bolt

Draw #	Item #	Part #	Description
--------	--------	--------	-------------

D4 Column Set Assembly			
D5		201504-18S	Column Set Assembly Complete
D5	26	NOT SOLD SEPARATELY	M12 Lock Washer
D5	27	NOT SOLD SEPARATELY	M12 Washer
D5	28	NOT SOLD SEPARATELY	S/S 25MM Spacer
D5	29	NOT SOLD SEPARATELY	370MM Column
D5	30	NOT SOLD SEPARATELY	M14 Washer
D5	31	NOT SOLD SEPARATELY	M14 Lock Washer
D5	32	NOT SOLD SEPARATELY	S/S M14x40 Hex Bolt

NOTE – Minimum order charge may apply if purchased separately

## 201504R2 MODEL H TENDERIZER BILL OF MATERIALS

Draw #	Item #	Part #	Description
--------	--------	--------	-------------

D5 Blade Set Assembly			
D6		16A-34H	Blade set Assembly Complete
D6	33	33AE	S/S Blade Washer
D6	34	42H	Blade Set Center Rod
D6	35	16	Super Blades
D6	36	35AE	S/S End Washer
D6	37	34AE	S/S M6x15 End Screw

Draw #	Item #	Part #	Description
--------	--------	--------	-------------

D7 Stripper Frame Assembly			
D7		201504-105	Stripper Frame Assembly Complete
D7	38	13HN	Individual Stripper Frame Column
D7	39	NOT SOLD SEPARATELY	Rear Hold Down Plate – 3 holes
D7	40	11AE	S/S Knurled Thumb Nut
D7	41	NOT SOLD SEPARATELY	Front Hold Down Plate – 2 holes
D7	42	15S/SE	S/S M6x25 Stud for Stripper Frame
D7	43	201504-41H	Comb, Blade Separator
D7	44	201504-3H-22H-65H	Stripper Frame

Draw #	Item #	Part #	Description
--------	--------	--------	-------------

D8 Base Assembly			
D8		201504-106	Base Assembly Complete
D8	45	11AE	S/S Knurled Thumb Nut
D8	46	201504-103	Base Guide Bracket Set (L+R)
D8	47	201504-107	S/S M6x20 Hex Head Bolt, Full Thread
D8	48	201504-1H Base	Torsion Spring Model H Design - S/S

NOTE – Minimum order charge may apply if purchased separately