

**BACKYARD
PRO®**

LIQUID PROPANE GRILL ROLL DOME

Quick Start Guide



- + Retain this manual for future reference.
- + Unit must be kept clear of combustibles at all times.

TABLE OF CONTENTS

Introduction	2
Warnings	3
Assembly & Operation	4
Cleaning & Maintenance	6

OWNER'S INFORMATION

Please complete this information and retain this manual for the life of the equipment. For warranty purposes, please fill out and retain this information. An example of the serial plate(s) for these units are included below for reference:

Model No. _____

Serial No. _____

Date of Purchase _____

Order No. _____

INTRODUCTION

Congratulations on your purchase of a Backyard Pro Roll Dome or LP Grill with Roll Dome Kit. Please read the following warnings, assembly instructions, and operation instructions to get the best and safest use out of your purchase.



SAFETY WARNINGS



Backyard Pro LP Outdoor Grills are designed, built, and sold for commercial use and should be operated by trained personnel only. Clearly post all **DANGERS, CAUTIONS, WARNINGS**, and **OPERATING INSTRUCTIONS** near each unit to insure proper operation and to reduce the chance of personal injury and/or equipment damage.

DANGER: DO NOT use grill for indoor cooking or heating. Toxic fumes can accumulate and cause asphyxiation. Do not use in or on boats or recreational vehicles.

WARNING: Improper installation, adjustment, alteration, service, or maintenance could cause injury or property damage. Read the installation, operation, and maintenance instructions thoroughly. Failure to follow these instructions could result in fire or explosion that could cause property damage, personal injury, or death.

WARNING: NOTE: The use and installation of this product must conform to local codes. In absence of local codes, use the National Fuel Gas Code, ANSI Z223.1/NFPA54, Natural Gas and Propane Installation Code, CSA B149.1, or Propane Storage and Handling Code, B149.2. Please note these units are only certified for the above noted gas applications.

WARNING: It is important that the roll dome is completely secured to your grill at all times during operation.

WARNING: Do not touch metal parts of the grill or roll dome until it has cooled for 45-60 minutes to avoid burns, unless you are wearing protective gear (BBQ mittens, pot holders, etc.).

ASSEMBLY

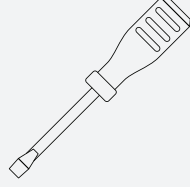
Please see the below assembly instructions for how to install your Backyard Pro roll dome attachment with your Backyard Pro LP Grill.

TOOLS NEEDED:

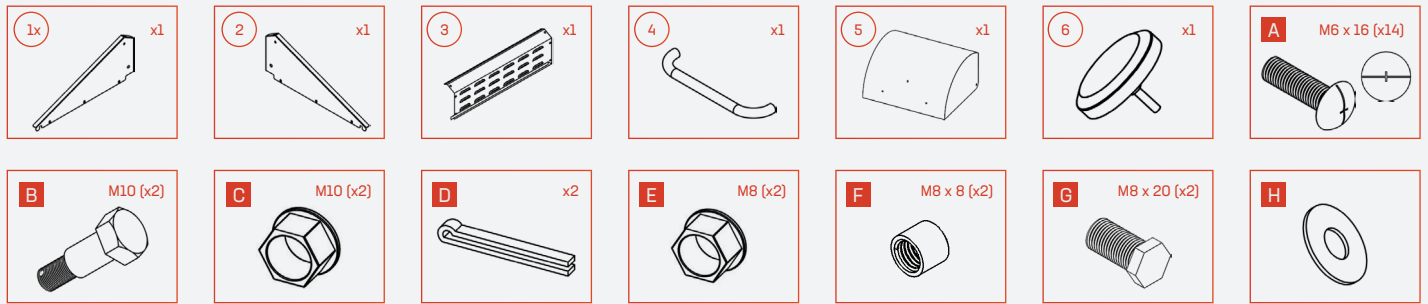
Wrench



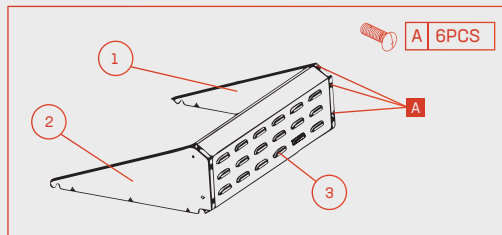
Screw Driver



GRILL	DESCRIPTION	ROLL DOME	QTY
554LPG30	30" LP GRILL	554LPGRD30	1
554LPG36	36" LP GRILL	554LPGRD36	1
554LPG48	48" LP GRILL	554LPGRD48	1
554LPG60	60" LP GRILL	554LPGRD30	2
554LPG72	72" LP GRILL	554LPGRD36	2

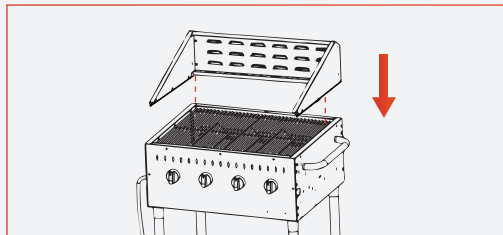


STEP 1



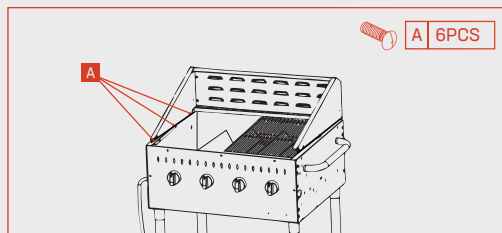
Install the left side panel (1) and the right side panel (2) to the ventilation panel (3) using Screw-A (6PCS).

STEP 2



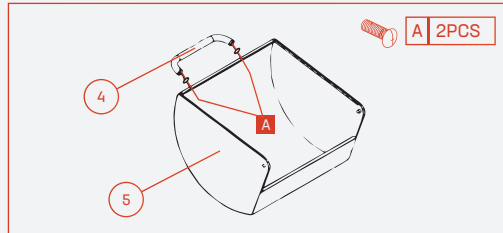
Place the constructed panels onto the grill.

STEP 3



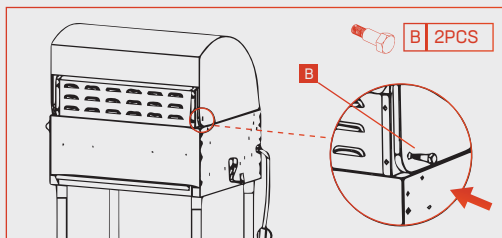
Install the side panels to the grill body section using Screw-A (6PCS).

STEP 4



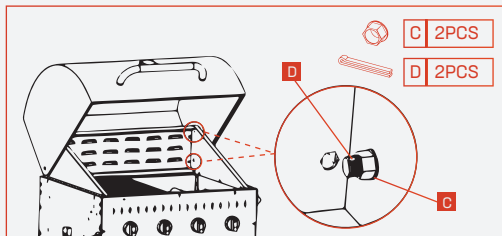
Install grill roll dome handle (4) to the roll dome (5) using Screw-A (2PCS) and Washer-H (2PCS).

STEP 5



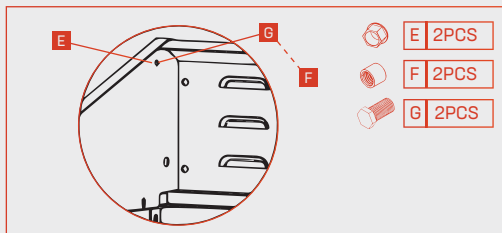
Secure roll dome (5) using Bolt-B (2 PCS).

STEP 6



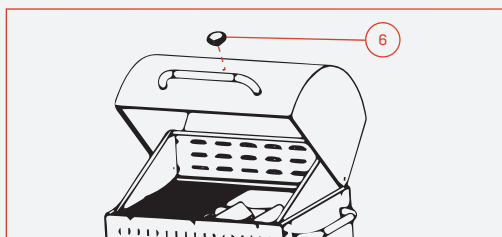
Tighten Nut-C onto Bolt-B, insert Pin-D to hold in place. Repeat on opposite side.

STEP 7



Insert Bolt-G into the hole in the side panel, attach Female Coupling Nut-F to Bolt-G, then secure with Nut-E. Repeat on the opposite side.

STEP 8



Install thermometer (6) onto the roll dome (5).

The roll dome is now fully assembled. If you have a 60" or 72" grill, repeat steps for the other side of the grill.

STARTUP

Once you have installed the Roll Dome, follow the instructions for lighting your grill found in your grill manual. It is recommended that the roll dome is open when turning gas on and lighting grill.

CLEANING AND MAINTENANCE

HOT WARNING - To prevent injury, please allow the grill and roll dome to cool down for 45-60 minutes prior to transportation or disassembly.

CLEANING INSTRUCTIONS

1. Clean roll dome when necessary. It is recommended to wipe down with warm, soapy water weekly.
2. See below for grill cleaning instructions.

CLEANING YOUR GRILL

1. Do not clean any part of your barbecue grill in a self-cleaning oven.
2. Do not use oven cleaners, abrasive kitchen cleaners, cleaners that contain citrus products, or mineral spirits.
3. Do not use any type of steel bristled brush.
4. Clean your grill regularly to prohibit grease build-ups and avoid a grease fire or excessive flare-ups.
5. Always allow the grill to cool down prior to cleaning.

STAINLESS STEEL

Clean with multipurpose, low abrasive, non-phosphorous metal or stainless steel polish and a soft cloth. Always polish in the direction of the lines. Do not allow grease and dirt to accumulate. In addition, the following products and naturally occurring substances in the outdoors will damage all stainless steel finishes. Use caution so that they do not come in contact with your gas grill. Immediately wash them off and dry the stainless steel should they ever come in contact with your gas grill. This includes, but is not limited to, pool chemicals (chlorine and bromine), lawn fertilizer, ice melting salts, sea or salt water, bird droppings, and tree sap.

OTHER EXTERIOR SURFACES

Wash with a mild dish soap and warm water. A cloth, soft brush, or plastic cleaning pad can be used. Rinse thoroughly and wipe dry.

NOTE: Rust is not covered under warranty.

NOTE: For further grill cleaning instructions please see your grill user manual