

# **403 TENDERIZER (115/60/1) TECHNICAL MANUAL**

**SPECIFICATION SHEET**

**INSTALLATION INSTRUCTIONS**

**OPERATION INSTRUCTIONS**

**CLEANING INSTRUCTIONS**

**MAINTENANCE INSTRUCTIONS**

**WIRING DIAGRAMS**

**CATALOG OF REPLACEMENT PARTS**

**SMARTPARTS™ USER GUIDE**

**RECOMMENDED SPARE PARTS LIST**

## Need other Hobart Services?



- [Warranty Registration](#)
- [Delivery and Installation](#)
- [Preventive Maintenance](#)
- [Hobart Service Contracts](#)
- [Extended Warranty Contracts](#)
- [Parts and Accessories](#)
- [Specialty Programs](#)
- [Water Treatment Programs](#)
- [Air Filtration System](#)



**HOBART**701 S Ridge Avenue, Troy, OH 45374  
1-888-4HOBART • www.hobartcorp.com**403 TENDERIZER****HOBART****ACCESSORY KNIVES**

- Strip Cutter Knives - cut flank steak, sirloin, chicken breast or pork for stir fry or fajitas; strip cut cooked ham, turkey and cheese for chef salads or garnishes. Available in three sizes:

- Extra Wide ( $\frac{3}{4}$ "
- Wide ( $\frac{3}{8}$ "
- Narrow ( $\frac{3}{16}$ "

- No-Knit Knives - back roller has a non-serrated solid disc-type knife in every third position which cuts tendons and other tough fibers, producing an excellent product of double tenderizing without knitting action.

- Star Knives - used for scoring meat

**NOTE:** Each comes standard with storage holder.

- Chrome-plated lift-out finish (acceptable to USDA) is available at extra cost.

**SOLUTIONS / BENEFITS****Lower Profile with Cut-Outs**

- Meat can be inserted closer to the blades; operation is easier and faster

**Plastic Guides Inside Guard**

- Guides meat into knives, reduces unintentional folding

**Larger Reinforced Magnet Mounting**

- Reduces breakage

**Translucent Guard**

- Allows operator to view product processing

**Variety of Knives Available**

- Versatility with meats and cheese

**Interlock Systems**

- Won't feed if guard or motor housing not in place

**Lift Out Unit Frame**

- Ease of cleaning, ease of use

**Burnished Aluminum Housing**

- Ease of cleaning
- Designed to accommodate pan for holding prepped product

**MODEL**

- 403-1 Tenderizer - Tenderizer with interlocks supplied with Knit-Knife stainless steel blades that cut meat and, at the same time, knit it so firmly together that it will cook as one solid steak.

Specifications, Details and Dimensions on Back.

**403 TENDERIZER**

# 403 TENDERIZER



701 S Ridge Avenue, Troy, OH 45374  
1-888-4HOBART • www.hobartcorp.com

LISTED BY: UNDERWRITERS LABORATORIES INC AND NSF INTERNATIONAL.

## SPECIFICATIONS

**MOTOR:** ½ H.P., totally-enclosed, fan-cooled, single-phase, capacitor-start, induction-run type.

**ELECTRICAL:** Furnished in electrical specification of 115/60/1, UL Listed. Also available in 115/50/1 and 220-240/50/1 - not submitted for UL Listing.

**SWITCH:** Manual 2 pole type.

**SAFETY SYSTEM:** (1) Safety interlocked on translucent guard and motor housing. Remote electro-magnetic sensing switches detect if guard or motor housing are not in place and prevent feed. Switches cannot be mechanically blocked. (2) Integral chute in translucent guard keeps hands at safe distance from tenderizing knives. (3) Pilot light warns when machine switch is ON even though machine is inoperable because translucent guard or motor housing is not in place.

**CORD & PLUG:** 6-foot, 3-wire cord and plug for grounding. Plug not furnished on export models.

**TRANSMISSION:** Hardened Steel Worm drives forged bronze worm gear in fluid grease bath. Counter-rotation of tenderizing knives obtained through spur gears mounted on hardened and ground alloy steel stub shafts. Gears sealed in cast transmission case. Motor, Worm and Gear Case are an integral unit for precision mount-in and easy cleaning. Bath lubricated needle and ball anti-friction bearings in transmission case. Grease-packed ball bearings in motor.

**BLADES & SHAFT:** Blades and shafts are made of heavy duty stainless steel.

**CLEANING COMBS:** Satin finish stainless steel, easily removable. Combs guide meat between rollers, automatically prevents any accumulation of meat between knives.

**LIFT OUT UNIT FRAME:** Cast aluminum with special bearings. Contains set of stainless steel shafts and cleaning combs hinged to swing free from blades for unit cleaning - combs can be removed easily. Automatic unit lock holds assembly in place.

**HOUSING:** Housing consists of cast aluminum gear case and motor housing and high impact plastic translucent guard. Lift out unit nested by cast aluminum support on stainless steel tie bars and shield. Unit designed to be quickly and easily cleaned.

**FINISH:** Burnished aluminum and translucent plastic.

**WEIGHT & DIMENSIONS:** Net wt. 56 lbs., shipping wt. 66 lbs. Height 21<sup>7</sup>/<sub>16</sub>", counter space 10<sup>1</sup>/<sub>2</sub>" x 19<sup>5</sup>/<sub>8</sub>". Feed throat opening 1<sup>3</sup>/<sub>8</sub>" x 7<sup>7</sup>/<sub>8</sub>".

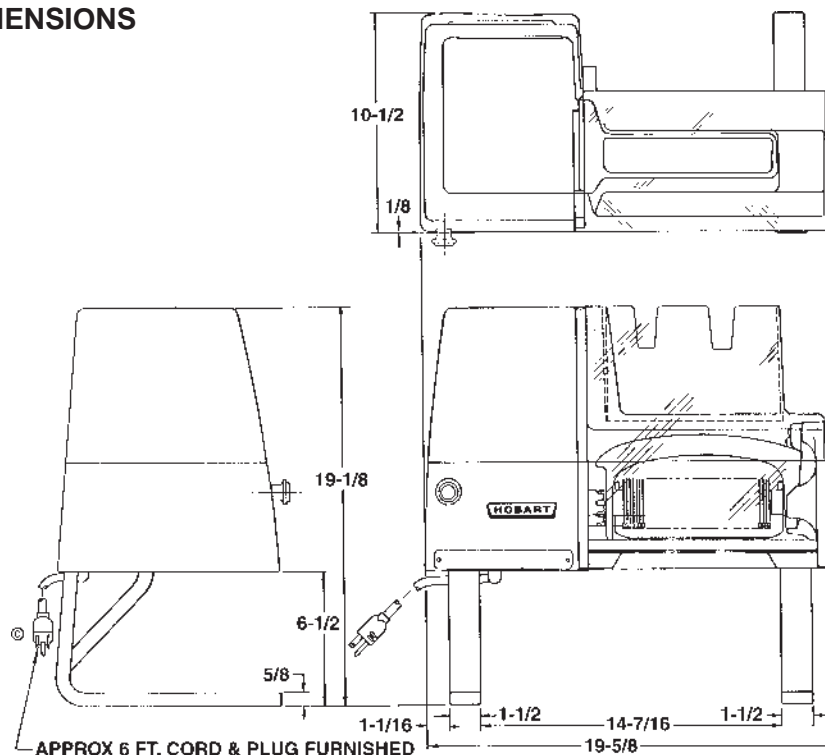
**STANDARD EQUIPMENT:** Cleaning fork.

**OPTIONAL KNIVES:**

- Knit
- "No-Knit"
- Strip Cutter - 3 sizes

**WARRANTY:** Unit has full one-year warranty on parts, labor and mileage against manufacturer's defects. Service contracts are available.

## DETAILS AND DIMENSIONS



D-69393

As continued product improvement is a policy of Hobart, specifications are subject to change without notice.

# INSTRUCTIONS

## MODELS 403 & 403U TENDERIZERS

ML-38761      403  
ML-38762      403U



WORLD HEADQUARTERS  
TROY OHIO 45374

# Installation, Operation and Care of MODELS 403 AND 403U TENDERIZERS

## SAVE THESE INSTRUCTIONS

### GENERAL

The models 403 and 403U Tenderizers are designed to tenderize a variety of meat products. The tenderizer consists of a set of roller units which contain knives that knit together and tenderize pieces of meat as they pass through the blades. Optional Wide ( $\frac{3}{8}$ " ) or Narrow ( $\frac{3}{16}$ " ) Julienne Knife Lift-out units are available for Model 403. They are used to cut food products, such as meats and cheeses, into strips.

The model 403U Tenderizer is available for USDA inspected establishments and contains USDA approved hangers in the lift-out unit.

### INSTALLATION

Remove machine from its shipping carton and place in its operating location. Remove transparent guard (4, Fig. 1), lift off motor housing (3, Fig. 1) and remove screw (1, Fig. 2) that plugs the vent hole (see label taped to machine). Insert dip stick (taped to machine) in vent hole. Replace housing and guard.

A cord with plug is furnished as standard equipment.

Before making electrical connections, check the specifications on machine data plate to assure they agree with those of your electrical service.

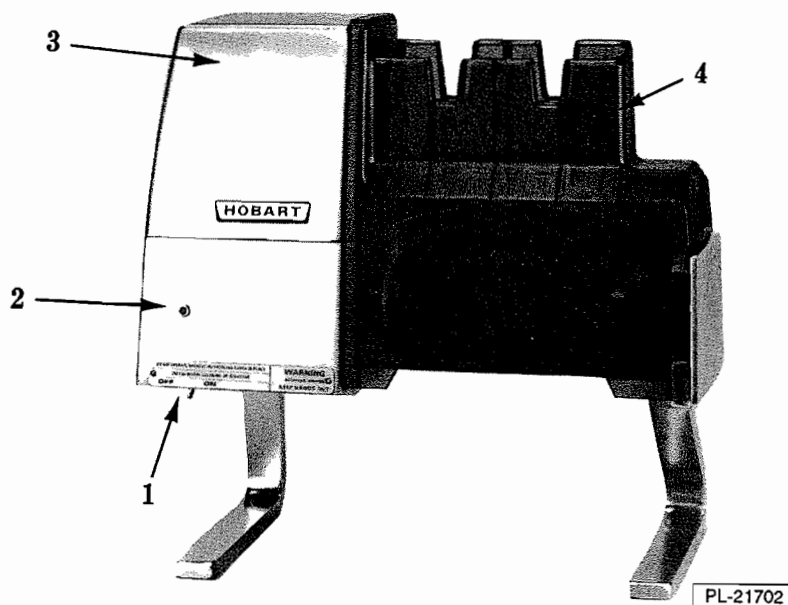


Fig. 1

This machine must be cleaned after installation and before being put into service. Refer to MAINTENANCE for instructions.

## SAFETY

Safety devices incorporated in this machine MUST be in correct operating position anytime machine is in service. Both the transparent guard and the motor housing must be in place. The pilot light (2, Fig. 1) will remain on when either the transparent guard or motor housing is removed and the switch is on. Motor will start when the guard and housing have been replaced. DO NOT defeat any of the safety features.

## OPERATION

Turn the switch (1, Fig. 1) to ON. The pilot light (2, Fig. 1) will illuminate indicating power is supplied to the machine.

To tenderize meats, simply drop cuts into top of transparent guard and receive them at the bottom.

Only boneless meats should be used. Choice or tender cuts should be run through several times at different angles. Less tender cuts should be run through several more times at different angles to increase tenderness. Pull out excess sinews to improve tenderness.

Various combinations of different meat types may be blended together. This is accomplished by running the meat types through separately to tenderize, then together creating a firmly knit cut. Large slices should be under  $\frac{3}{4}$ " thick.

## MAINTENANCE

**WARNING:** UNPLUG MACHINE POWER CORD BEFORE BEGINNING ANY MAINTENANCE PROCEDURE.

### CLEANING

Machine should be thoroughly cleaned after each daily use or when changing meat types.

Remove the transparent guard. Release hanger lock (4, Fig. 2) and remove the lift-out unit as shown in Fig. 3.

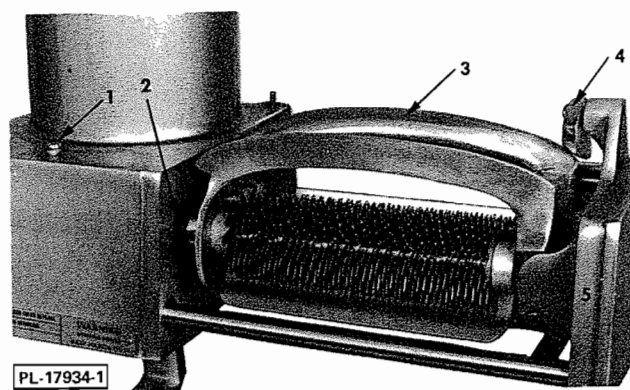


Fig. 2

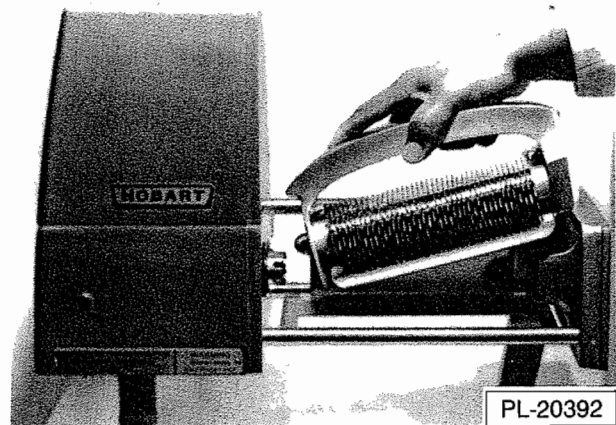


Fig. 3

Separate the front and rear hanger assemblies of the lift-out unit (3, Fig. 2) and remove the strippers (5, Fig. 2) by raising each and sliding out of hanger.

**WARNING:** KNIVES ARE SHARP. EXERCISE EXTREME CAUTION WHEN HANDLING KNIVES.

Immerse the transparent guard and strippers (and when used, the optional Julienne Knife Lift-out units) in a mild soap and warm water solution. Use the cleaning fork (supplied) to remove any food particles from between the knives on each hanger assembly. DO NOT attempt to use the cleaning fork with machine running. Immerse the hanger assemblies in the warm soapy water and scrub them with a soft bristle brush. Rinse all components.

Wipe remainder of machine with a clean wet cloth.

All components can be sanitized using an iodophor (iodine-based) sanitizer solution.

**NOTE:** Prior to reassembly, inspect for bent or broken blades. If a bone or other hard object is run through the tenderizer, it may cause one or more of the blades to bend or break. If this occurs, DO NOT operate machine until blade(s) has been straightened or replaced.

Reassemble machine.

Occasionally remove, clean and replace the stub shaft seals (2, Fig. 2). Also, remove the motor housing and wipe motor area periodically.

## **LUBRICATION**

### **Gear Case**

Use the dipstick in the vent hole to check lubricant level annually. If lubricant level is not between the lines on dipstick, contact the local Hobart Service Office.

### **Motor**

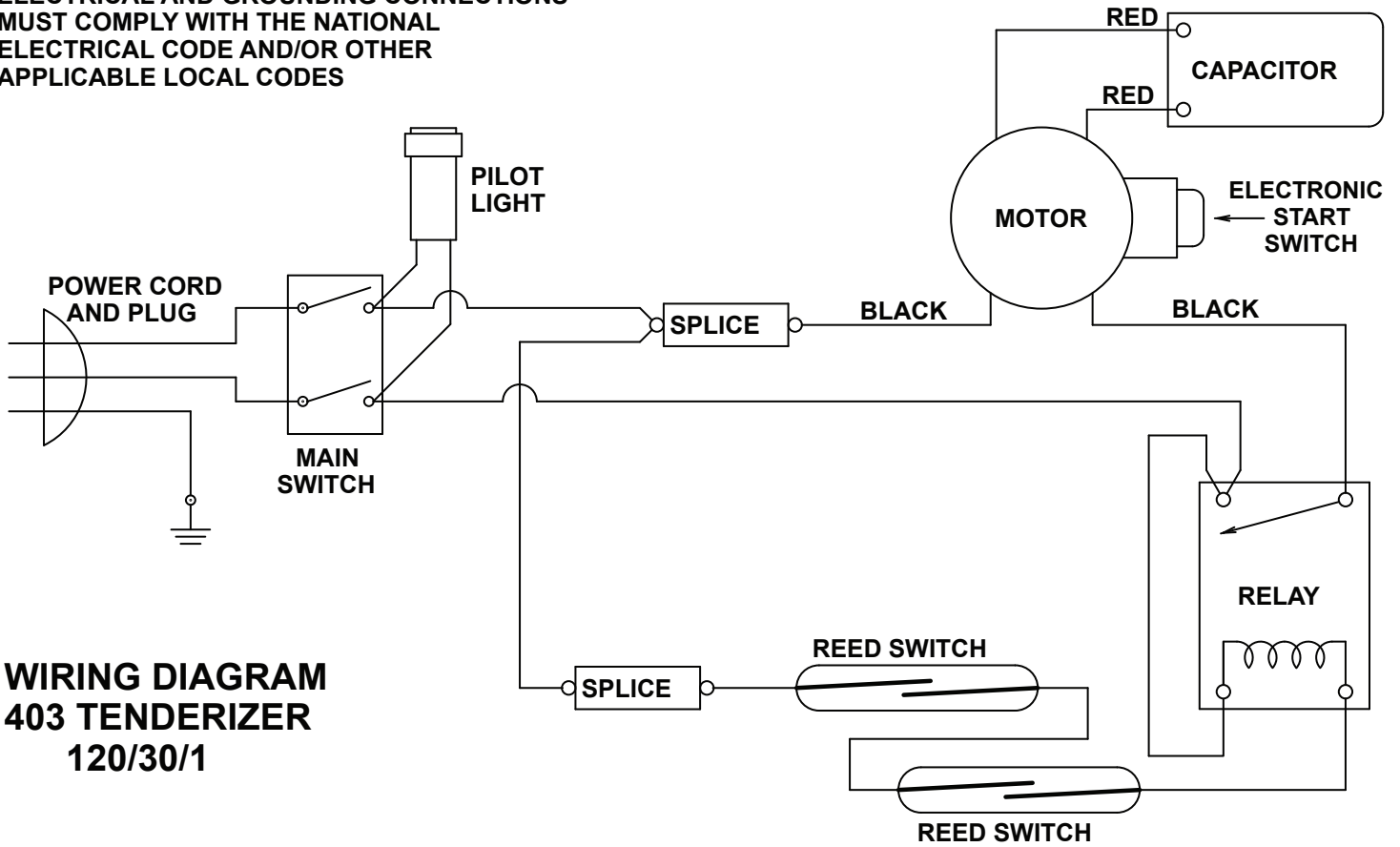
The motor is totally enclosed and requires no lubrication.

## **KNIVES**

Knives do not need to be razor-sharp. However, if knives need to be sharpened or replaced, contact the local Hobart Service Office.



ELECTRICAL AND GROUNDING CONNECTIONS  
MUST COMPLY WITH THE NATIONAL  
ELECTRICAL CODE AND/OR OTHER  
APPLICABLE LOCAL CODES



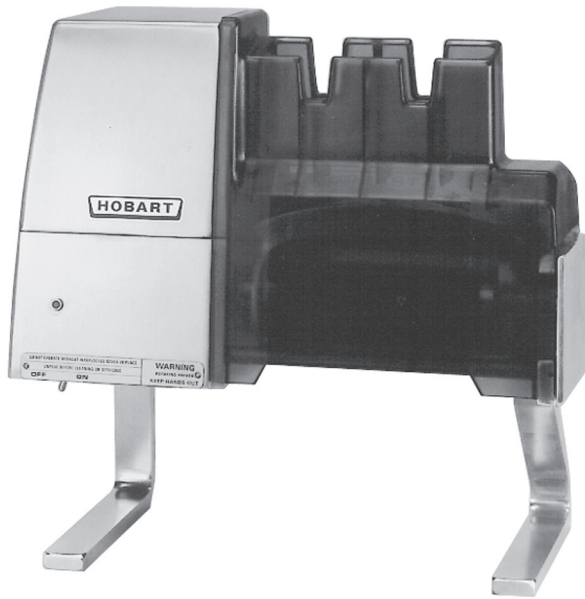
**WIRING DIAGRAM  
403 TENDERIZER  
120/30/1**

MADE FROM FORM 16514 (REV D)

AI 2283



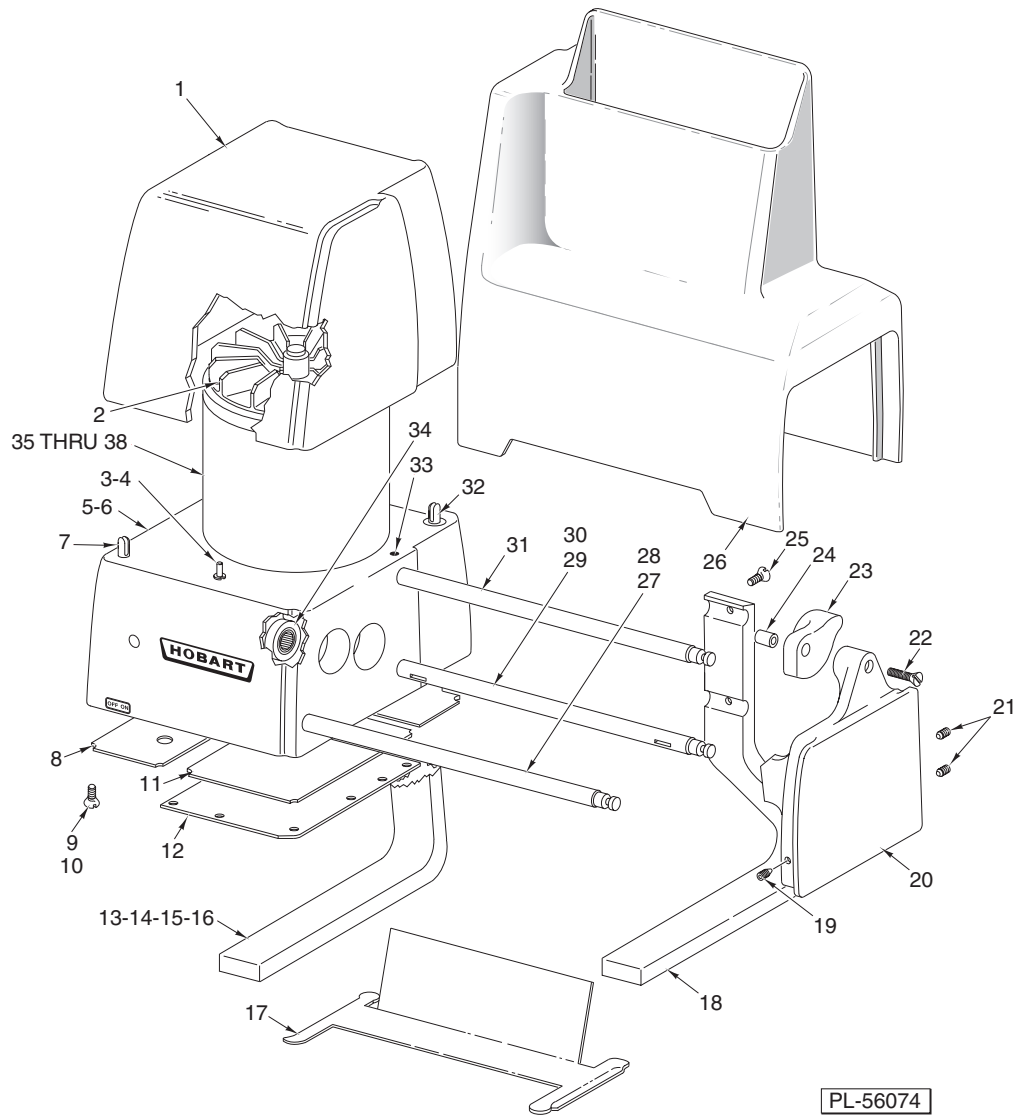
# CATALOG OF REPLACEMENT PARTS



## TENDERIZERS

(INCLUDES MOTOR PARTS)

403	ML-38761
403U	ML-38762
403C	ML-104603

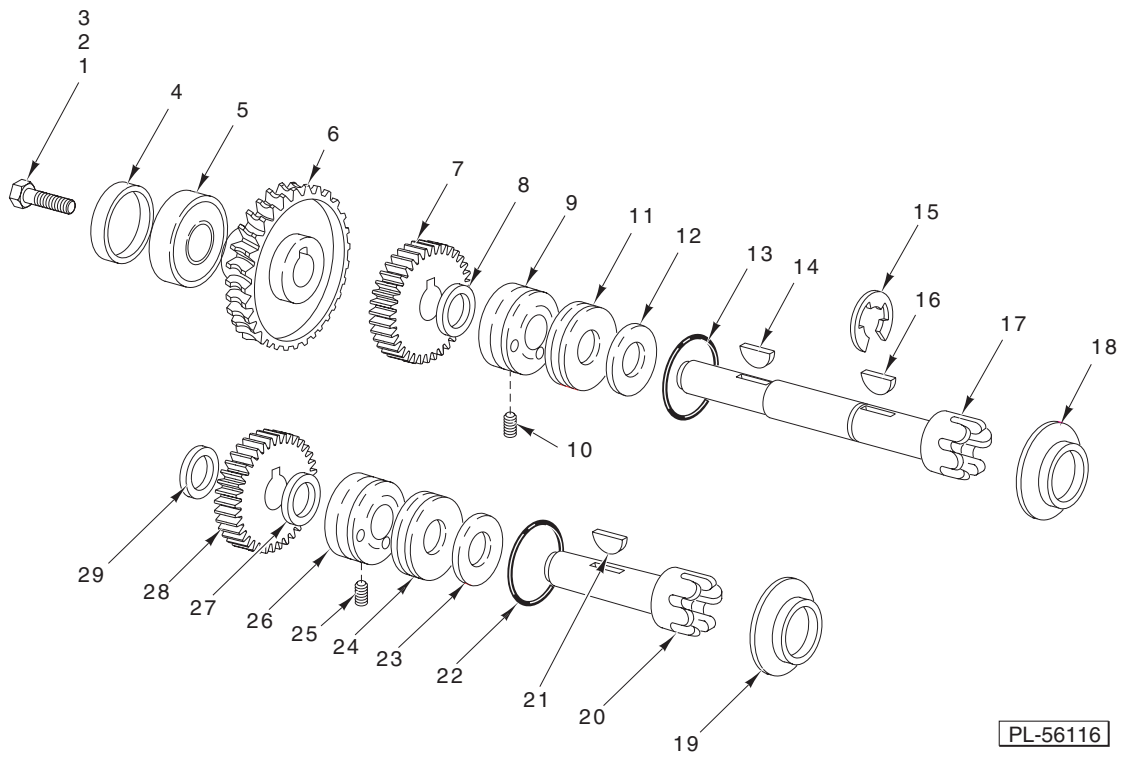


### HOUSING UNIT

## HOUSING UNIT

ILLUS.	PART NO.	NAME OF PART	AMT.
	PL-56074		
1	00-290148	Motor Housing Assy. ....	1
2	00-437288	Fan (Incls. Clip) .....	1
3	00-076994	Dipstick .....	1
4	RR-010-21	Retaining Ring .....	1
5	00-438584-00001	Gear Case Assy. (60 Hz.) (Incls. Items 7, 32, 34, & Motor Shaft Seal 00-069348) .....	1
6	00-438584-00002	Gear Case Assy. (50 Hz.) (Incls. Items 7, 32, 34, & Motor Shaft Seal 00-069348) .....	1
7	00-069387	Stud .....	1
8	00-437673-00001	Cover – Bottom (W/O Overload) .....	1
9	SD-024-01	Self-Tapping Screw 10-24 x 1/2 Flat Hd., Type TT .....	16
10	SC-119-57	Mach. Screw 1/4-20 x 3/8 .....	2
*11	00-438744	Gasket .....	1
12	00-291068	Cover – Gear Case .....	1
13	00-069345	Leg – Left .....	1
14	WL-003-44	Lockwasher 5/16 Medium .....	2
15	NS-013-14	Nut 5/16-18 Hex .....	2
16	WS-005-37	Washer (Use to Shim Item 13) .....	AR
17	00-069354	Shield .....	1
18	00-069346	Leg – Right .....	1
19	SC-116-87	Set Screw 1/4-20 x 1/4 Special .....	1
20	00-438583-00002	Support – End Mach. ....	1
21	SC-116-87	Set Screw 1/4-20 x 1/4 Special .....	2
22	SC-114-98	Mach. Screw 10-24 x Slotted Flat Hd. ....	1
23	00-436428	Lock – Hanger .....	1
24	00-436429	Ferrule – Hanger .....	1
25	SC-022-43	Mach. Screw 5/16-18 x 1/2 Flat Hd. ....	2
26	00-270348	Guard – Transparent .....	1
27	00-069353-00002	Tie Bar – Front .....	1
28	SC-116-87	Set Screw 1/4-20 x 1/4 Special .....	1
29	00-069353-00001	Tie Bar – Lower Rear .....	1
30	SC-116-87	Set Screw 1/4-20 x 1/4 Special .....	1
31	00-069353-00003	Tie Bar – Upper Rear .....	1
32	00-069395	Stud & Base Assy. ....	1
33	SC-116-87	Set Screw 1/4-20 x 1/4 Special .....	1
34	BN-005-03	Bearing Needle .....	1
35	ML-042502	Motor (Give Elec. Spec.) .....	1
36	00-293452-00003	Starting Relay (60 Hz.) (3 Terminals) .....	1
37	00-293452-00004	Starting Relay (50 Hz.) (3 Terminals) .....	1
38	00-271612-00002	Electronic Start Switch (4 Terminals) .....	1

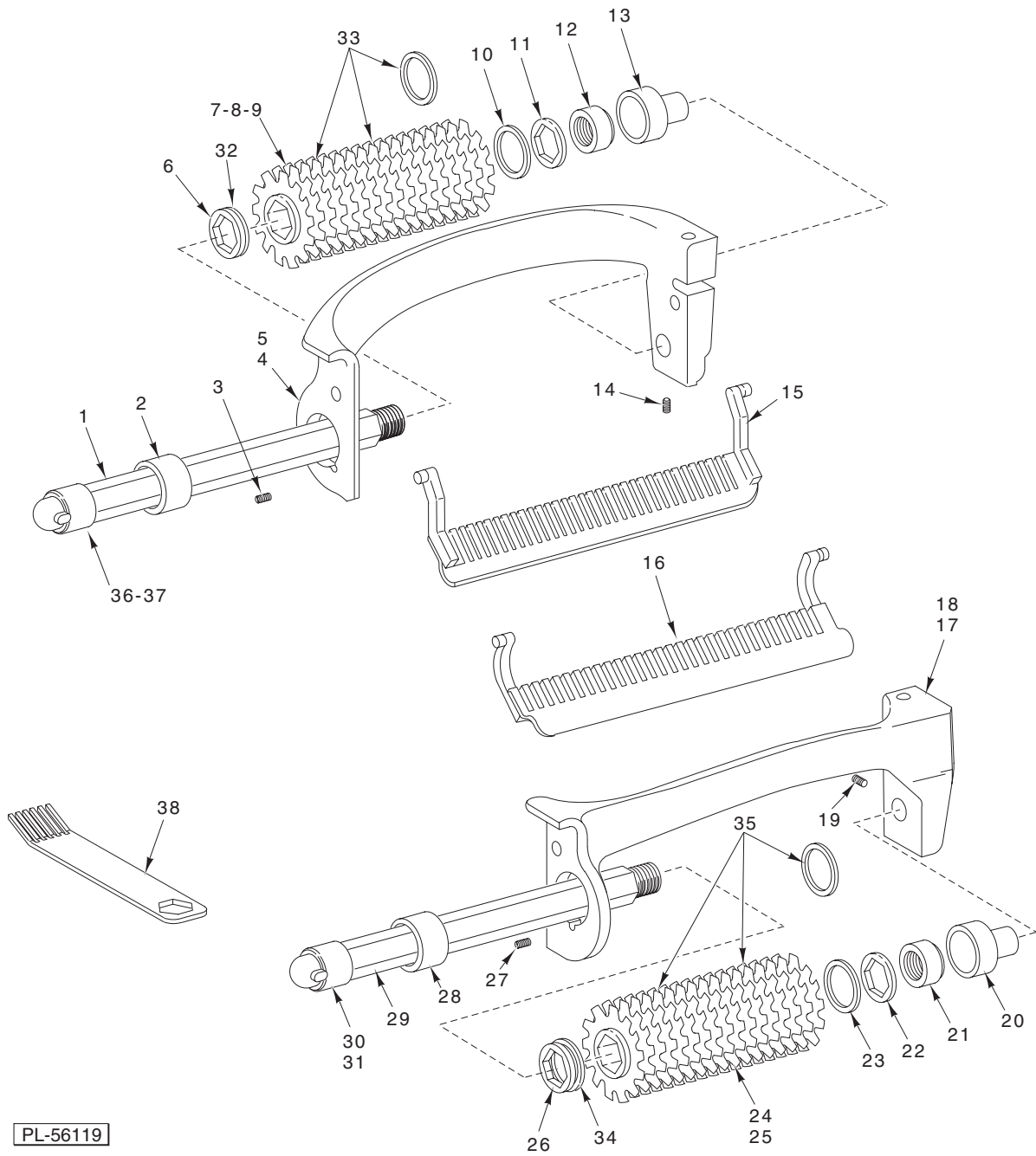
\*Prior to S/N 56-935-369 (403) and S/N 56-936-246 (403U), use 00-069396-00001.



**DRIVE UNIT**

## DRIVE UNIT

ILLUS.	PART NO.	NAME OF PART	AMT.
PL-56116			
1	SC-041-01	Cap Screw 1/4-20 x 3/4 Hex. Hd. (SST) .....	1
2	NS-013-02	Nut 1/4-20 Hex .....	1
3	WL-007-16	Lockwasher 1/4 External Shakeproof .....	1
4	00-069338	Pusher – Bearing .....	1
5	BB-020-20	Ball Bearing – Fafnir #203K .....	1
6	00-069349	Gear – Worm (29T) .....	1
7	00-076855	Gear (32T) .....	1
8	WS-011-43	Washer .....	1
9	00-292680	Bearing & Seat Assy. ....	1
10	SC-121-27	Set Screw 10-24 x 3/8 Special .....	1
11	00-292681	Seal – Retainer & Dowel Assy. (Incls. Item 13) .....	1
12	00-292675	Bearing – Thrust .....	1
13	00-067500-00069	O-Ring .....	1
14	KW-003-10	Key – Woodruff 3/16 x 3/4 Lg. ....	1
15	RR-006-09	Retaining Ring .....	1
16	KW-003-03	Key – Woodruff 1/8 x 1/2 Lg. ....	1
17	00-069361	Shaft – Back Stub .....	1
18	00-069337	Seal – Face .....	1
19	00-069337	Seal – Face .....	1
20	00-069362	Shaft – Front Stub .....	1
21	KW-003-03	Key – Woodruff 1/8 x 1/2 Lg. ....	1
22	00-067500-00069	O-Ring .....	1
23	00-292675	Bearing – Thrust .....	1
24	00-292681	Seal – Retainer & Dowel Assy. (Incls. Item 22) .....	1
25	SC-121-27	Set Screw 10-24 x 3/8 Special .....	1
26	00-292680	Bearing & Seat Assy. ....	1
27	WS-030-09	Washer .....	1
28	00-076855	Gear (32T) .....	1
29	WS-030-09	Washer .....	1



PL-56119

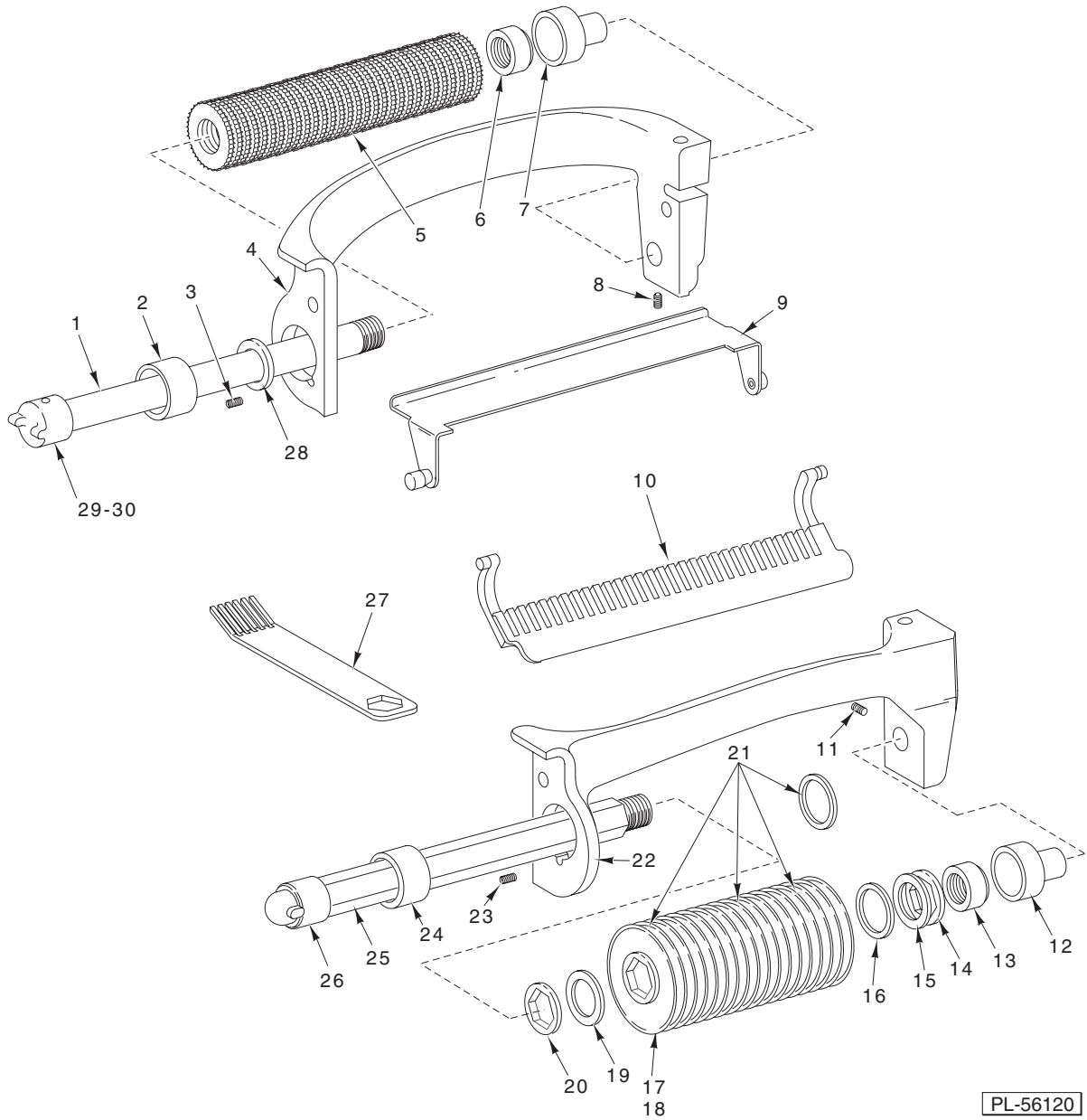
**LIFT-OUT UNIT  
(CLUSTER KNIVES)**

## LIFT-OUT UNIT (CLUSTER KNIVES)

ILLUS. PL-56119	PART NO.	NAME OF PART	AMT.
1	00-274180	Shaft Assy. (Rear) (Incls. Items 36 & 37) .....	1
2	00-292103	Bearing – Left Back .....	1
3	SC-064-21	Set Screw 1/4-20 x 1/4 Special .....	1
*4	–	Back Hanger .....	1
*5	–	Back Hanger (403U) .....	1
6	00-293161	Spacer – Knife Rotor .....	1
7	00-293162	Cluster – Knives (Knit) .....	3
8	00-293181	Cluster – Knives (No Knit) .....	3
9	00-293175	Cluster – Knives (Star) .....	3
10	00-293046-00002	Spacer – Knife Rotor (0.005 Thk.) .....	1
11	00-293161	Spacer – Knife Rotor .....	1
12	00-292099	Lock Nut – Back .....	1
13	00-292101	Bearing – Right .....	1
14	SC-064-21	Set Screw 1/4-20 x 1/4 Special .....	1
15	00-292106	Back Stripper Assy. ....	1
16	00-292105	Front Stripper Assy. ....	1
*17	–	Front Hanger .....	1
*18	–	Front Hanger (403U) .....	1
19	SC-064-21	Set Screw 1/4-20 x 1/4 Special .....	1
20	00-292101	Bearing – Right .....	1
21	00-292098	Lock Nut – Front .....	1
22	00-293161	Spacer – Knife Rotor .....	1
23	00-293046-00002	Spacer – Knife Rotor (0.005 Thk.) .....	1
24	00-293162	Cluster – Knives (Knit) .....	3
25	00-293175	Cluster – Knives (Star) .....	3
26	00-293161	Spacer – Knife Rotor .....	1
27	SC-064-21	Set Screw 1/4-20 x 1/4 Special .....	1
28	00-292102	Bearing – Left Front .....	1
29	00-274174	Shaft Assy. (Front) (Incls. Items 30 & 31) .....	1
30	00-274175	Hub – Shaft (Available On Units With Removable Roll Pins Only) .....	1
31	RP-004-31	Roll Pin 1/4 x 1 (Available On Units With Removable Roll Pins Only) .....	1
32	00-293046-00002	Spacer – Knife Rotor 0.005 Thk. ....	1
33	00-293046-00002	Spacer – Knife Rotor 0.005 Thk. (Insert Between Clusters) .....	2
34	00-293046-00002	Spacer – Knife Rotor 0.005 Thk. ....	1
35	00-293046-00002	Spacer – Knife Rotor 0.005 Thk. (Insert Between Clusters) .....	2
36	00-274181	Hub – Shaft (Available On Units With Removable Roll Pins Only) .....	1
37	RP-004-31	Roll Pin 1/4 x 1 (Available On Units With Removable Roll Pins Only) .....	1
38	00-292592	Fork – Cleaning .....	1
	00-295730	Lift Out Unit (Std.) .....	1
	00-295808	Lift Out Unit (403U) .....	1
	00-295731	Lift Out Unit (No Knit) .....	1
	00-295732	Lift Out Unit (Star Blade) .....	1
	00-274172	Front Roller Assy. (Knit) (No Knit) (Incls. Items 21, 22, 23, 24, 26, 29, 34, & 35) .....	1
	00-274173	Front Roller Assy. (Star Cluster) (Incls. Items 21, 22, 23, 25, 26, 29, 34, & 35) .....	1
	00-274177	Rear Roller Assy. (Knit) (Incls. Items 1, 6, 7, 10, 11, 12, 32, & 33) .....	1
	00-274179	Rear Roller Assy. (No Knit) (Incls. Items 1, 6, 8, 10, 11, 12, 32, & 33) .....	1
	00-274178	Rear Roller Assy. (Star) (Incls. Items 1, 6, 9, 10, 11, 12, 32, & 33) .....	1
	00-295965	Cleaning & Storage Unit .....	1

\*Items Have Been Discontinued. Order 00-289290-00001 For Model 403 Or 00-289290-00002 For Model 403U (Contains Front And Rear Hanger).





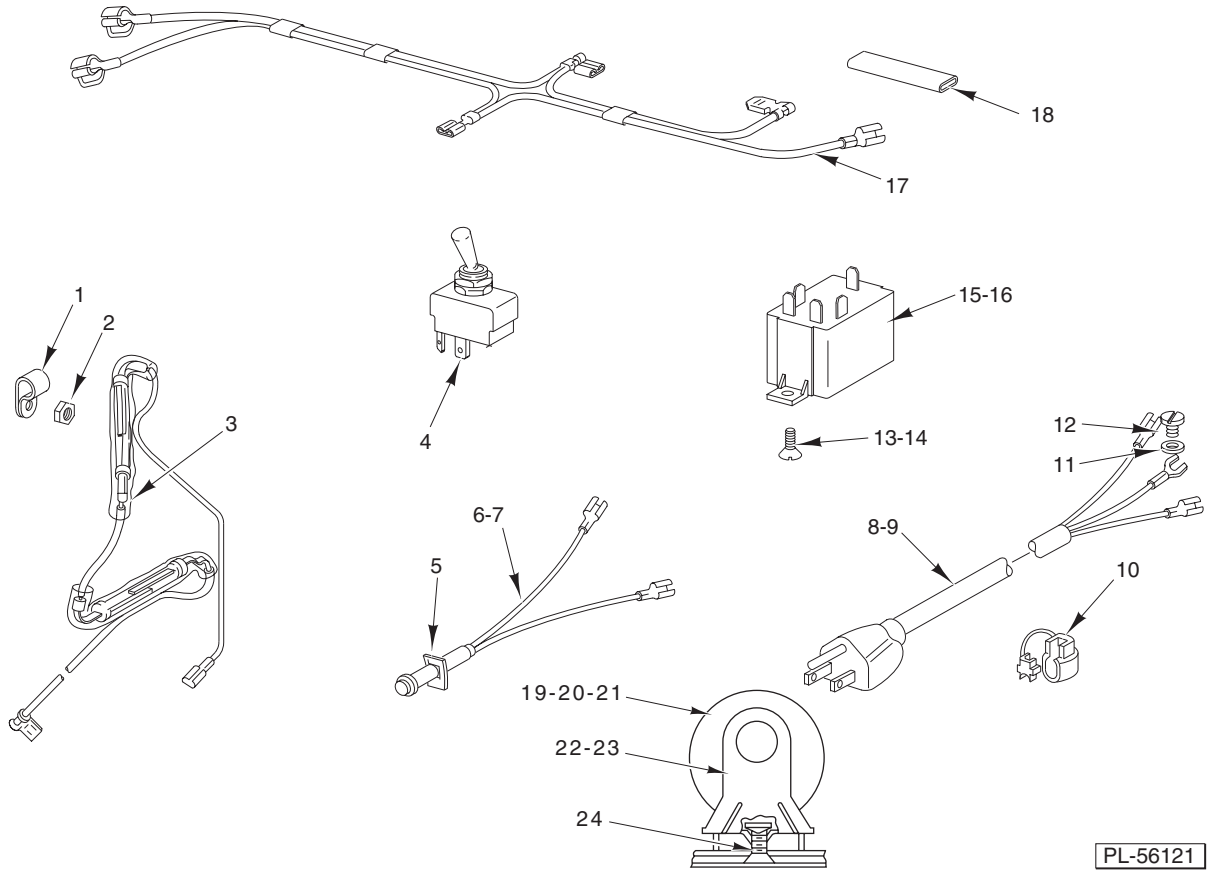
PL-56120

**LIFT-OUT CLUSTER UNIT JULIENNE  
(NARROW/WIDE CLUSTER KNIVES)**

### LIFT-OUT CLUSTER UNIT JULIENNE (NARROW/WIDE CLUSTER KNIVES)

ILLUS. PL-56120	PART NO.	NAME OF PART	AMT.
1	00-274188	Back Blade Shaft Assy. (Incls. Items 29 & 30) .....	1
2	00-292103	Bearing – Left Back .....	1
3	SC-064-21	Set Screw 1/4-20 x 1/4 Special Hex .....	1
*4	–	Back Hanger .....	1
5	00-270304	Roller .....	1
6	00-292099	Lock Nut – Back .....	1
7	00-292101	Bearing – Right .....	1
8	SC-064-21	Set Screw 1/4-20 x 1/4 Special Hex .....	1
9	00-293197	Guide Assy. – Julienne .....	1
10	00-293192	Stripper Assy. – Julienne .....	1
11	SC-064-21	Set Screw 1/4-20 x 1/4 Special Hex .....	1
12	00-292101	Bearing – Right .....	1
13	00-292098	Lock Nut – Front .....	1
14	00-293161	Spacer – Knife Rotor 3/16 (Use with Narrow Cluster Only) .....	1
15	00-293046-00002	Spacer – Knife Rotor (0.005 Thk.) .....	1
16	00-293046-00001	Spacer (Use With Narrow Cluster .075 Only) .....	1
17	00-293187	Cluster – Knives 3/8 (Julienne Wide) .....	4
18	00-293188	Cluster – Knives 3/16 (Julienne Narrow) .....	3
19	00-293046-00002	Spacer – Knife Rotor (0.005 Thk.) .....	1
20	00-293161	Spacer – Knife Rotor .....	1
21	00-293046-00002	Spacer – Knife Rotor (0.005 Thk.) (Insert Between Clusters) .....	AR
*22	–	Front Hanger (Incls. Label) .....	1
23	SC-064-21	Set Screw 1/4-20 x 1/4 Special Hex .....	1
24	00-292103	Bearing – Left Back .....	1
25	00-274185	Front Shaft Assy. (Julienne) (Incls. Items 29 & 30) .....	1
26	00-274181	Hub – Shaft (Available On Units With Removable Roll Pins Only) .....	1
27	00-292592	Fork – Cleaning .....	1
28	00-293161	Spacer – Knife Rotor .....	1
29	00-274181	Hub – Rear Shaft Drive (Available On Units With Removable Roll Pins Only) .....	1
30	RP-004-31	Roll Pin 1/4 x 1 (Available On Units With Removable Roll Pins Only) .....	1
	00-274184	Front Roller Assy. 3/16 (Julienne Narrow) (Incls. Items 13 thru 15, 19, 20, 21, & 25) .....	1
	00-274183	Front Roller Assy. 3/8 (Julienne Wide) (Incls. Items 13, 15, 17, 19, 20, 21, & 25) .....	1
	00-274187	Rear Roller Assy. (Julienne) (Incls Items 1, 5, 6, & 28) .....	1
	00-295965	Cleaning & Storage Unit .....	1
	00-270241	Hanger – (Julienne) Service Kit .....	1

\*Items Have Been Discontinued. Order 00-270241 (Contains Front & Back Hanger).



**ELECTRICAL UNIT**

## ELECTRICAL UNIT

ILLUS.	PART NO.	NAME OF PART	AMT.
PL-56121			
1	00-069193-00004	Clip – Cord .....	2
2	NS-009-07	Mach. Nut 6-32 Hex .....	2
3	00-069377	Reed Switch Assy. ....	1
4	00-087711-148-1	Switch (With Nuts) .....	1
5	00-069360-00003	Push Nut .....	1
6	00-069360-00001	Pilot Light (115 V.) (Incls. Item 5) .....	1
7	00-069360-00002	Pilot Light (230 V.) (Incls. Item 5) .....	1
8	00-117542-00021	Cord & Plug Assy. (3 Cond., Under 150 V., 60 Hz.) .....	1
9	00-117542-00042	Cord Only (Less Plug) (3 Cond.) (50 Hz.) .....	1
10	FE-021-21	Strain Relief .....	1
11	WL-006-07	Lockwasher #10 Medium .....	1
12	SD-024-01	Self-Tapping Screw 10-24 x 3/8 Pan Hd., Type TT .....	1
13	SC-022-01	Mach. Screw 6-32 x 3/8 Flat Hd. ....	2
14	NS-009-07	Mach. Nut 6-32 Hex .....	2
15	00-087714-035-1	Relay (115 V., 50/60 Hz.) .....	1
16	00-087714-035-2	Relay (220-240 V., 50 Hz.) .....	1
17	00-076773	Harness – Wiring .....	1
18	00-065890-00029	Connector – Splice .....	2
19	00-070487-00003	Capacitor (Use On Machines With Starting Relay) .....	1
20	00-070487-00024	Capacitor (Use On Machines With Electronic Start Switch) .....	1
21	00-070486-00001	End Cap – Capacitor .....	1
22	00-076774	Tension Nut 10-24 Sq .....	2
23	00-066621-00001	End Cap – Capacitor .....	1
24	SC-022-16	Mach. Screw 10-24 x 5/16 Flat Hd. ....	2



# Online Parts Catalog

*Note: It is helpful, but not essential to know the ML (Material List) Number of the equipment for which a part is needed*

**How Do I Find An ML Number?**

The ML Number is found on the machine dataplate. The dataplate resembles the sample below, and is generally located on the back or side of a machine.

<b>HOBART</b> CORPORATION		MODEL	ML
COMMERCIAL DISHWASHER TROY, OHIO			
LISTED 756A C	UL	US	NSF
VOLTS		DATE CODE:	
HZ	PH	AMP	
749901 MADE IN U.S.A.			

**Section 1 – If Equipment ML Number is known**  
**Section 2 – If Equipment ML Number is not known**



PRODUCT DIRECTORY | [Locate an Office](#) | [Warranty Registration](#) | [Career Opportunities](#)

SERVICE | **PARTS** | INSTALLATIONS | WATER TREATMENT | MANUALS & SUPPORT | CONTRACTS & PMs



### Hobart Service

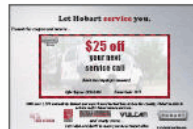
We're there for you, anytime you need us. 24x7.



We're within 50 miles of 95% of our service customers. Only Hobart can provide such blanket coverage because we're the premier equipment manufacturer with nearly 200 offices and 1,700

### Hobart Service News & Offers

Get \$25 Off Your Next Service Call!



From [hobartservice.com](http://hobartservice.com)  
select  
**PARTS**



PRODUCT DIRECTORY | [Locate an Office](#) | [Warranty Registration](#) | [Career Opportunities](#)

SERVICE | **PARTS** | INSTALLATIONS | WATER TREATMENT | MANUALS & SUPPORT | CONTRACTS & PMs



[Hobart Service Home](#) > [Hobart National Parts and Accessories Program](#)

### National Parts and Accessories Program

#### Hobart SmartParts® System

The [Hobart SmartParts® System](#) is an interactive parts catalog system. By entering information from your equipment's data plate, you can be assured that you are accessing the



#### Not Sure How to Use SmartParts™?

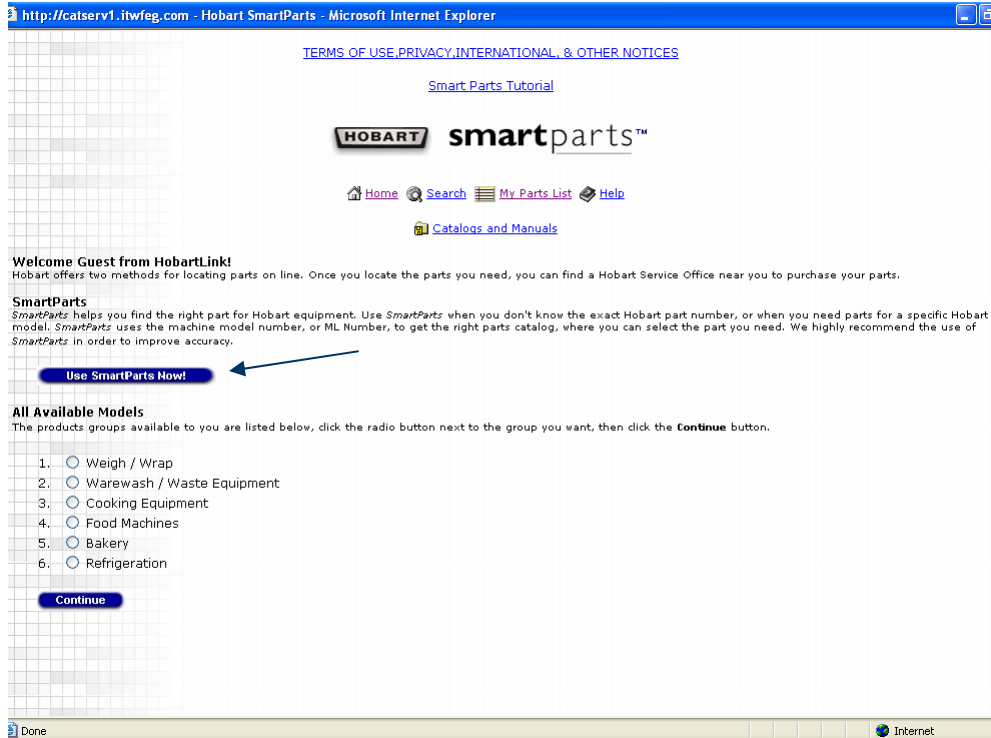
It's easy! Just go through the [Hobart SmartParts™ Online Tutorial](#) and you'll be a parts pro in no time!

#### Hobart Parts QuickLinks

- ▶ [Hobart SmartParts® System](#)
- ▶ [Parts Catalogs](#)

Next  
select  
**SMARTPARTS**

Web Browser Pop-up blocker must be turned off for this site in order for SmartParts to operate



*This is SmartParts home page*

***If the ML Number of the Equipment is known, select Use SmartParts Now***

*(We'll explain what to do if the ML number of the Equipment is not known in Section 2)*

## SmartParts

### Enter Your ML Number

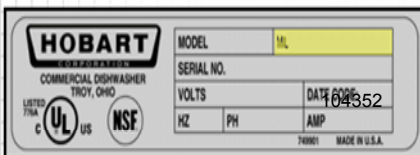
Enter your full or partial ML Number in the field provided, then click the **Search SmartParts!** button.

ML-  **Search Smart Parts**

*Enter the ML number and click on Search SmartParts*

### How Do I Find An ML Number?

The ML Number is found on the machine dataplate. The dataplate resembles the sample below, and is generally located on the back or side of a machine.



**For this example, the part needed is a Water Pressure Gauge used on the LX 30 Undercounter Dishwasher**

**The ML number of this dishwasher is 104352**



# Hobart Parts Web

## SmartParts

SmartParts results for **104352** (listed by product group):

### Warewash / Waste Equipment

1.  LX Series Dishwashers (Includes ML numbers 104349, 104350, 104351, 104352, 130016, 130017, 130018, 130019)

Continue

Go Back

*Click on the Radio button to select the Parts Catalog*

*Then click on Continue*

## Assemblies Available

LX Series Dishwashers (Includes ML numbers 104349, 104350, 104351, 104352, 104353, 104354, 104355, 104356, 110380, 110381, 130016, 130017, 130018, 130019)

Click the radio button next to the assembly you want, then click the **Continue** button.

Continue

Go Back

1.  BASE ASSEMBLY
2.  TANK ASSEMBLY
3.  DOOR ASSEMBLY
4.  ELECTRICAL CONTROL DRAWER (LX SERIES)
5.  ELECTRICAL CONTROL DRAWER (LXi SERIES)
6.  DISPLAY
7.  WASH ARM ASSEMBLY (LX18 SERIES)
8.  WASH ARM ASSEMBLY (LX30/40, LXG, LXi, & LXiG SERIES)
9.  WASH PIPE ASSEMBLY
10.  50 HZ., 60 HZ. PUMP AND MOTOR ASSEMBLY (INGERSOLL OR CRANE)

*The Water Pressure Gauge is on the Base Assembly*

*Select Base Assembly*

*Then click on Continue*

# Parts List

## BASE ASSEMBLY

Select an appropriate figure size

Change To:

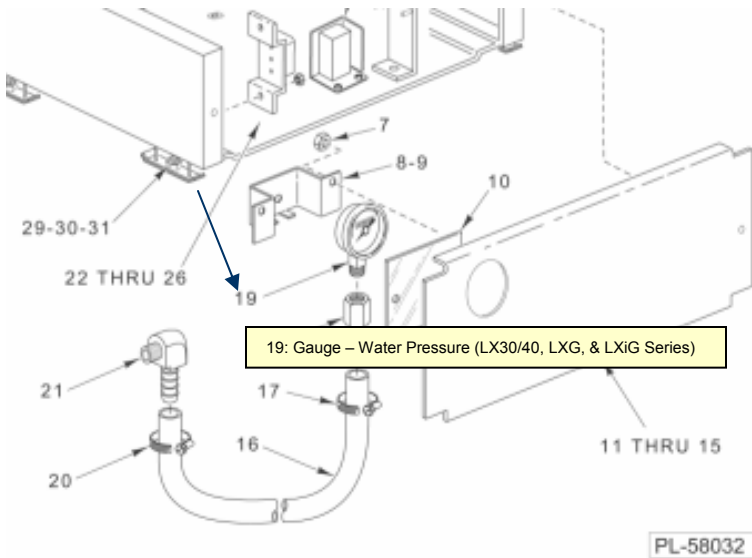
Different Assembly

Different Product

To add an item to your parts list, click the **Add** button next to the item. To see an exploded view, click on the view figure buttons.

View Figure: @ 25% @ 50% @ 75% @ 100% ←

Add	Item	Part No.	Part Description	Qty Used On Assembly
Add	1	00-328634	Track Assy. (RH)	1
Add	2	NS-015-01	Nut 1/4-20 Hex (SST)	8
Add	3	WL-006-17	Lockwasher 1/4 Medium	8



BASE ASSEMBLY

Locate the part needed (Water Pressure Gauge) on the drawing

Placing the cursor on the number will display the Description of the Part

Click on the number pointing to the part

<b>Add</b>	15	00-329267	Retainer - Screw #10	AR
<b>Add</b>	16	00-475060	Hose 1/4 x 12 Pressure Gauge to Fill Valve	1
<b>Add</b>	17	00-528501	Clamp - Hose #4	1
<b>Add</b>	18	FP-088-30	Fitting - Hose Barb (LX30/40, LXG, & LXi Series)	1
<b>Add</b>	19	00-918429	Gauge - Water Pressure (LX30/40, LXG, LXi, & LXiG Series)	1
<b>Add</b>	20	00-528501	Clamp - Hose #4	1
<b>Add</b>	21	FP-088-29	Fitting - Hose 1/4 Barb x 1/8-27 NPTM	1
<b>Add</b>	22	SC-018-24	Mach. Screw 6-32 x 3/4 Phil. Pan Hd.	2
<b>Add</b>	23	00-918385	Block - Terminal (5 Pole) (Current Construction)	1
<b>Add</b>	24	00-918339	Bracket - Terminal Block (Current Construction)	1
<b>Add</b>	25	NS-031-50	Stop Nut 6-32 Hex (SST)	2
<b>Add</b>	26	NS-031-16	Stop Nut 10-24 Hex Elastic (SST)	2
<b>Add</b>	27	00-475299-00001	Connector Assy. (Previous Construction)	1
<b>Add</b>	28	00-473138	Bracket - Terminal Block (Previous Construction)	1
<b>Add</b>	29	00-241857	Foot - Leveling	4
<b>Add</b>	30	00-329284	Spacer - Leveling Foot (LX18 Series)	4

- *Selecting the part on the figure causes the part to be highlighted on the parts list*
- *Click on the Add button to add the part to the shopping cart*
- *You can add more parts or change the quantity of the parts already in the cart*
- *When finished, click on the Confirm Parts Selected and then on Print Parts List if you want to print*

### Parts Selected

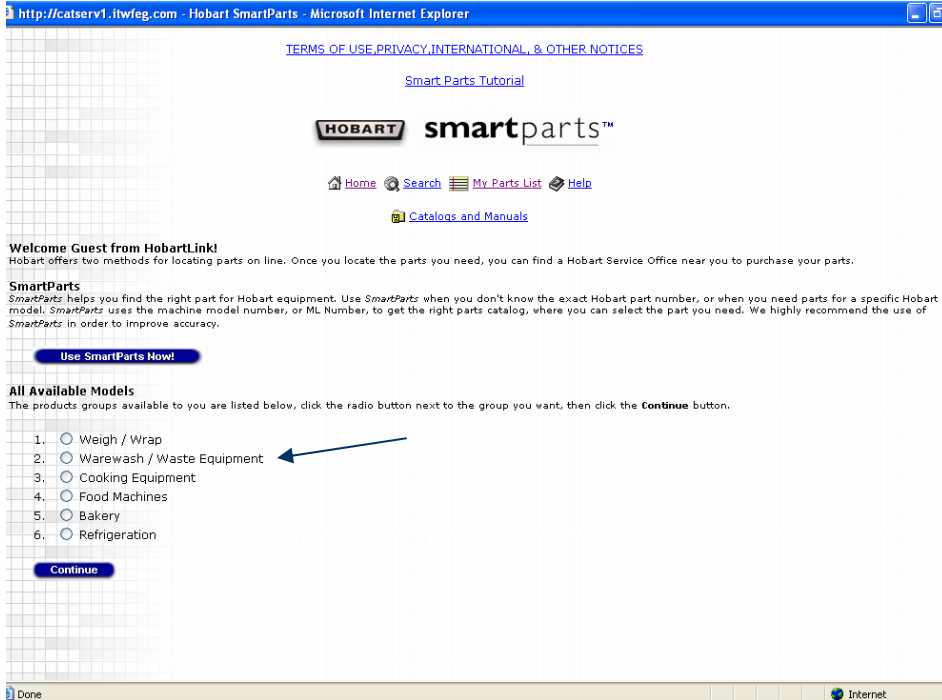
#### Items Listed for Guest

Add More Items From:

There is 1 item in your parts list:

Delete	Qty. Req.	Part No.	Part Description	Parts List
<input type="button" value="Delete"/>	<input type="text" value="1"/>	00-918429	Gauge - Water Pressure (LX30/40, LXG, LXi, & LXiG Series)	<a href="#">BASE ASSEMBLY</a>

Use SMARTPARTS Now



*This (again) is SmartParts home page*

For this example, the part needed is a Water Pressure Gauge used on the LX 30 Undercounter Dishwasher

*If the ML Number of the Equipment is not known, click on the Radio button to select Warewash / Waste Equipment*

*Then click on Continue*

*(Go to Section 1 if you do know the ML number of the Equipment)*

## Products Available

### Warewash / Waste Equipment

Click the radio button next to the product you want, then click the **Continue** button.

**Continue**

**Go Back**

1.  Door Type Dishwasher
2.  Booster
3.  Conveyor Type Dishwasher (C-LINE)
4.  Flight Type Dishwasher
5.  Miscellaneous Warewash
6.  UnderCounter Dishwasher (indicated by a blue arrow)
7.  Waste Equipment

**Continue**

**Go Back**

*Click on the Radio button to select UnderCounter Dishwasher*

*Then click on Continue*

## Parts Catalogs

### UnderCounter Dishwasher

Click the radio button next to the catalog you want, then click the **Continue** button.

**Continue** **Go Back**

- LX Series Dishwashers (Includes ML numbers 104349, 104350, 104351, 104352, 104353, 104354, 104355, 104356, 110380, 110381, 130016, 130017, 130018, 130019)
- WM Series Dishwashers
- Dishwasher Motor Book (Includes the following Motor Spec /ML numbers - 9257, 6661, 8115, 17829, 18897, 18751, 18931, 18930, 18932, 31219, 31220, 31221, 18491, 17350, 9801, 18603)
- SR24 Series Dishwasher (SR24C - ML-130021, SR24H - ML-130022)
- Fast Food Warewashers

**Continue** **Go Back**

*Click on the Radio button to select LX Series Dishwashers*

*Then click on Continue*

### Assemblies Available

**LX Series Dishwashers (Includes ML numbers 104349, 104350, 104351, 104352, 104353, 104354, 104355, 104356, 110380, 110381, 130016, 130017, 130018, 130019)**

Click the radio button next to the assembly you want, then click the **Continue** button.

**Continue** **Go Back**

- BASE ASSEMBLY
- TANK ASSEMBLY
- DOOR ASSEMBLY
- ELECTRICAL COMPONENTS(LX SERIES)
- ELECTRICAL COMPONENTS (LXi SERIES)
- DISPLAY
- WASH AND RINSE ARM ASSEMBLY(lx30/40, lxxg, lxi, & lxig SERIES)(PREV. CONSTR.)
- WASH AND RINSE ARM ASSEMBLY(lx30/40, lxxg, lxi, & lxig SERIES)(CURRENT CONSTR.)
- WASH ARM ASSEMBLY(LX18 SERIES)
- WASH PIPE ASSEMBLY (PREVIOUS CONSTRUCTION)
- WASH PIPE ASSEMBLY (CURRENT CONSTRUCTION)

*The Water Pressure Gauge is on the Base Assembly*

*Select Base Assembly*

*Then click on Continue*

# Parts List

## BASE ASSEMBLY

Select an appropriate figure size

Change To:

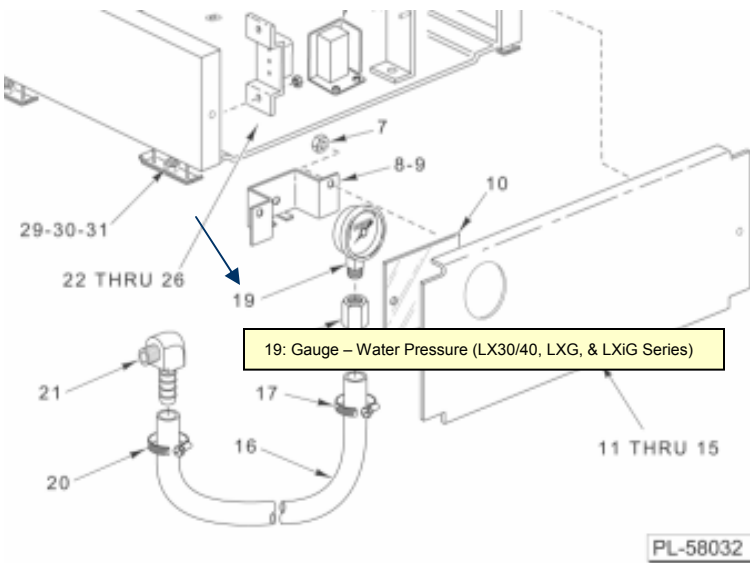
Different Assembly

Different Product

To add an item to your parts list, click the **Add** button next to the item. To see an exploded view, click on the view figure buttons.

View Figure: @ 25% @ 50% @ 75% @ 100% ←

Add	Item	Part No.	Part Description	Qty Used On Assembly
Add	1	00-328634	Track Assy. (RH)	1
Add	2	NS-015-01	Nut 1/4-20 Hex (SST)	8
Add	3	WL-006-17	Lockwasher 1/4 Medium	8



## BASE ASSEMBLY

Locate the part needed (Water Pressure Gauge) on the drawing

Placing the cursor on the number will display the Description of the Part

Click on the number pointing to the part

<b>Add</b>	15	00-329267	Retainer - Screw #10	AR
<b>Add</b>	16	00-475060	Hose 1/4 x 12 Pressure Gauge to Fill Valve	1
<b>Add</b>	17	00-528501	Clamp - Hose #4	1
<b>Add</b>	18	FP-088-30	Fitting - Hose Barb (LX30/40, LXG, & LXI Series)	1
<b>Add</b>	19	00-918429	Gauge - Water Pressure (LX30/40, LXG, LXI, & LXIG Series)	1
<b>Add</b>	20	00-528501	Clamp - Hose #4	1
<b>Add</b>	21	FP-088-29	Fitting - Hose 1/4 Barb x 1/8-27 NPTM	1
<b>Add</b>	22	SC-018-24	Mach. Screw 6-32 x 3/4 Phil. Pan Hd.	2
<b>Add</b>	23	00-918385	Block - Terminal (5 Pole) (Current Construction)	1
<b>Add</b>	24	00-918339	Bracket - Terminal Block (Current Construction)	1
<b>Add</b>	25	NS-031-50	Stop Nut 6-32 Hex (SST)	2
<b>Add</b>	26	NS-031-16	Stop Nut 10-24 Hex Elastic (SST)	2
<b>Add</b>	27	00-475299-00001	Connector Assy. (Previous Construction)	1
<b>Add</b>	28	00-473138	Bracket - Terminal Block (Previous Construction)	1
<b>Add</b>	29	00-241857	Foot - Leveling	4
<b>Add</b>	30	00-329284	Spacer - Leveling Foot (LX18 Series)	4

- *Selecting the part on the figure causes the part to be highlighted on the parts list*
- *Click on the Add button to add the part to the shopping cart*
- *You can add more parts or change the quantity of the parts already in the cart*
- *When finished, click on the Confirm Parts Selected and then on Print Parts List if you want to print*

## Parts Selected

### Items Listed for Guest

Add More Items From:

**Current Assembly**

**Different Assembly**

**Different Product**

There is 1 item in your parts list:

Delete	Qty. Req.	Part No.	Part Description	Parts List
<b>Delete</b>	<input type="text" value="1"/>	00-918429	Gauge - Water Pressure (LX30/40, LXG, LXI, & LXIG Series)	<a href="#">BASE ASSEMBLY</a>

**Update Quantities**

**Confirm Parts Selected**

Use **SMARTPARTS** Now



## RECOMMENDED SPARE PARTS LIST

### 403 TENDERIZER 115/60/1

Qty	Part Number	Description
1	069377	Reed Switch
1	087711-148-1	Switch
1	087714-35-1	Relay (115V)
1	069396-1	Gasket Set
1	BB-020-20	Ball Bearing
1	292678	Bearing Assy
2	067500-69	O Ring
1	69337	Seal
1	292106	Back Stripper Assy
1	292105	Front Stripper Assy
1	292680	Bearing Assy
1	271612-2	Electronic Start Relay
1	70487-24	Capacitor
1	ML-42502-A	Motor (115V)
1	270348	Cover