



Suspension/Pass-Through Strip Heat Lamps

RETAIN THIS MANUAL FOR FUTURE REFERENCE.
UNIT MUST BE KEPT CLEAR OF COMBUSTIBLES AT ALL TIMES.



Models: 423BLS2, 423BLS3, 423BLS4, 423BLS5, 423BLS6, 423BLS7, 423BLS8,
423BLPT2, 423BLPT3, 423BLPT4, 423BLPT5, 423BLPT6, 423BLPT7, 423BLPT8

Table of Contents

Owner's Information	3
Safety Warnings	4
Specifications	6
Parts of a Hanging Heat Lamp	6
Installation Instructions	7
Operating Instructions	8
Troubleshooting	8
Warranty	9

Owner's Information

Please complete this information and retain this manual for the life of the equipment. For warranty purposes, please fill out and retain this information. An example of the serial plate(s) for these units are included below for reference.

Model No. _____

Serial No. _____

Date of Purchase: _____

Serial Plate Example:



ITEM #: 423BLS2

MANUFACTURER MODEL #: BLS2

DESCRIPTION: SUSPENSION HEAT LAMP, 2 BULB

VOLTAGE: 120V

WATTAGE: 500W

SERIAL #:



Intertek

MADE IN CHINA

ServIt Suspension & Pass-Through Strip Heat Lamps are designed to keep foods at optimum serving temperatures without affecting quality. They are built for tough kitchen duty while constructed of aluminum for easy installation and cleaning. Suspension & Pass-Through Strip Heat Lamps keep plated meals and portions of food hot and flavor-fresh until served.

ServIt lamps come in a standard attractive silver finish, perfect for front-of-house installation or use in a variety of portable applications. Each pair of bulbs includes a dedicated yet simple on/off switch for easy operation of select bulbs. The shatterproof 250W bulbs are easy to swap out for different colored bulbs to accommodate different foods on display.

Suspension units are easily hung with included chains and standard cord and plugs which can be stripped down for hardwire installation. Pass-through units come with T-legs that are perfect for portable/mobile applications, or where suspending the unit is inconvenient.

This manual provides the installation, safety, and operating instructions for Suspension & Pass-Through Strip Heat Lamps. ServIt recommends all installation, operating, and safety instructions appearing in this manual to be read prior to installation or operation of the unit.

SAFETY WARNINGS

ServIt Suspension & Pass-Through Strip Heat Lamps are designed, built, and sold for commercial use and should be operated by trained personnel only. Clearly post all CAUTIONS, WARNINGS, and OPERATING INSTRUCTIONS near each unit to ensure proper operation and to reduce the chance of personal injury and/or equipment damage.

WARNING: Do not store or use gasoline or other flammable vapors and liquids in the vicinity of this or any other appliance. Keep the area free and clear of combustible materials.

WARNING: Improper installation, adjustment, alteration, service, or maintenance can cause property damage, injury, or death. Read the Installation, Operating, and Maintenance Instructions thoroughly before installing or servicing this equipment.

CAUTION: These models are designed, built, and sold for commercial use only. If these models are positioned so the general public can use the equipment, make sure all cautions, warnings, and operating instructions are clearly posted near each unit so that anyone using the equipment can use it correctly and not injure themselves or the equipment.

CAUTION: Make sure food product has been heated to the proper food-safe temperature before placing in unit. Failure to heat food product properly may result in serious health risks. This unit is for holding preheated food product only.

ELECTRIC SHOCK HAZARD:

- Wire unit into properly grounded electrical panel of the correct voltage, size, and configuration.
- Suspension & pass-through strip heat lamps must be installed by a qualified electrician. Installation must conform to all local electrical codes. Installation by unqualified personnel will void unit warranty and may lead to electric shock or burn, as well as damage to unit and/or its surroundings.
- Turn OFF power switch, unplug power cord/turn off power at circuit breaker, and allow unit to cool before performing any cleaning, adjustments, or maintenance.
- DO NOT submerge or saturate with water. Unit is not waterproof. Do not operate if unit has been submerged or saturated with water.
- Unit is not weatherproof. Locate unit indoors where ambient air temperature is a minimum of 70°F (21°C).
- Do not clean unit when it is energized or hot.
- Do not steam clean or use excessive water on the unit.
- This unit is not “jet-proof” construction. Do not use jetclean spray to clean this unit.
- Do not pull unit by power cord.
- Discontinue use if power cord is frayed or worn.
- Do not allow liquids to spill into the unit.
- This unit must be serviced by qualified personnel only. Service by unqualified personnel may lead to electric shock or burn.

FIRE HAZARD:

- Locate heat lamp shade a minimum of 1" (25 mm) from combustible walls and materials. If safe distances are not maintained, discoloration or combustion could occur.
- Do not use harsh chemicals such as bleach (or cleaners containing bleach), oven cleaners, or flammable cleaning solutions to clean this unit.

BURN HAZARD:

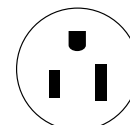
- Some exterior surfaces on unit will get hot. Use caution when touching these areas.

SPECIFICATIONS

- Cordset Configuration: 250W per bulb, 120V, 3 wire grounded cord with plug.
NOTE: 2/3/4 bulb units include a single cord and plug, while 5/6/7/8 bulb units include 2 cords and plugs.
- If the supply cord is damaged, the manufacturer or an authorized service agent or a similarly qualified person must replace it to avoid a hazard or voiding the warranty.

Item #	# of Bulbs	Voltage	Wattage	# of Cords and Plugs
Suspension Cord				
423BLS2	2	120V	500W	1
423BLS3	3	120V	750W	1
423BLS4	4	120V	1000W	1
423BLS5	5	120V	1250W	2
423BLS6	6	120V	1500W	2
423BLS7	7	120V	1750W	2
423BLS8	8	120V	2000W	2

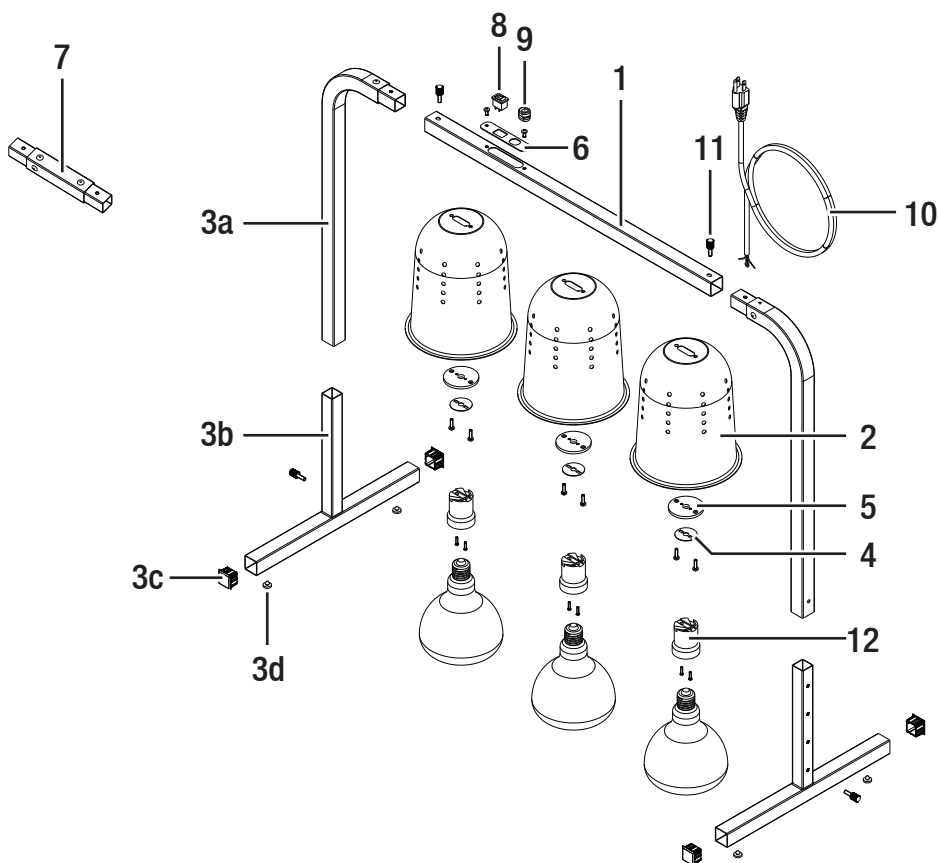
Item #	# of Bulbs	Voltage	Wattage	# of Cords and Plugs
Countertop T-Leg				
423BLPT2	2	120V	500W	1
423BLPT3	3	120V	750W	1
423BLPT4	4	120V	1000W	1
423BLPT5	5	120V	1250W	2
423BLPT6	6	120V	1500W	2
423BLPT7	7	120V	1750W	2
423BLPT8	8	120V	2000W	2



**NEMA
5-15P**

PARTS LIST

#	Description
1	Upper Frame
2	Lamp Shade
3	Leg Components (Countertop Models Only)
3a	Frame
3b	Base
3c	Plastic Cap
3d	Plastic Feet
4	Insulation Pad
5	Fixed Block
6	Switch Plate
7	Connector (Used on 5/6/7/8 Bulb Units)
8	On/Off Switch
9	Cord Grip
10	NEMA 5-15P Power Cord
11	M5 Screw
12	Lamp Socket
13	Hanging Chains (Not Pictured)



ASSEMBLY & INSTALLATION INSTRUCTIONS

ServIt Suspension and Pass-Through Heat Lamps come partially assembled out of the box. All units in pass-through configuration with T-Legs require installation of legs. All suspension and pass-through 5, 6, 7, 8 bulb units come disassembled for easier transportation. The two sections of bulbs must be secured together using the included connector (423BLSCON) and applying red thread locker to the bolts. 2, 3, 4 bulb units only operated in suspension fashion do not have assembly instructions

1. Unpack units and dispose of all packaging except documentation.
2. Set one section of the heat lamp on a flat, level surface with the cord and plug facing left.
3. Unscrew the attached bolt on the heat lamp section opposite to the cord and plug side.
4. Insert the connector and tighten down with bolt that has red thread locker applied.
5. Place the second section of the heat lamp on the same surface with the cord and plug facing right.
6. Unscrew the attached bolt on the heat lamp section opposite to the cord and plug side.
7. Slide the connector into the section of heat lamp and tighten down bolt with red thread locker applied.

For Suspension Units:

1. Unscrew the attached bolts on the ends of the heat lamp (next to the cord and plug).
2. Using the included chain, loop one hook through the bolt hole on the heat lamps.
3. Loop the hook on the opposite end of the chain onto the mounting ceiling or over shelf.
4. Repeat on the opposite side of the heat lamp with the other chain.

For Pass-Through Units:

1. Unscrew the attached bolts on the ends of the heat lamps (next to the cord and plug)
2. Insert one t-leg into the exposed opening of the heat lamp and tighten down with bolt that has red thread locker applied
3. Repeat on the opposite side of the lamp with the other leg

OPERATING INSTRUCTIONS

General Information:

- Always clean equipment thoroughly before first use.
- Check rating label for your model designation and electrical rating.
- Ensure unit is installed properly by a qualified electrician.

WARNING: ELECTRICAL SHOCK HAZARD.

FAILURE TO FOLLOW THE INSTRUCTIONS IN THIS MANUAL COULD RESULT IN SERIOUS INJURY OR DEATH.

Do not modify the power supply cord plug. If it does not fit into the outlet, have the proper outlet installed by a qualified electrician. Do not use an extension cord with this appliance. Check with a qualified electrician if you are unsure as to whether the appliance is properly grounded.

General Operating Instructions:

- All foodservice equipment should be operated by trained personnel.
- Do not place arms, hands, or other objects not desired to be heated under the heat lamp.
- Never hold perishable food below 150°F (66°C).
- To turn the unit ON, flip the lamp switch to the “on” position.
- To turn the unit OFF, flip the lamp switch to the “off” position.
- Never leave the unit on unsupervised, overnight, or during service down-times.

General Cleaning Instructions:

- NEVER clean any electrical unit by immersing it in water. Turn off before surface cleaning.
- Always clean equipment thoroughly before first use. Clean unit daily.
- Turn off electrical units before cleaning or servicing.
- Do not use abrasive pads or scrubbers as it may damage the finish of the lamp shade.

TROUBLESHOOTING

Issue	Solution
Light(s) Not Working	Check if the unit is properly connected and the power switch is in the "on" position.
	Check hardwire power line for volts.
	Check if the bulb has blown.
Loose Socket	Turn off power and check if socket is loose or broken. Remove the bulb and tighten the socket screws.
Loose Shade	Turn off power and check if socket is loose or broken. Remove the bulb and tighten the shade screws.
Unit Blows Fuse or Circuit Breaker	Check to make sure circuit is not overloaded and all electrical connections are properly secured.