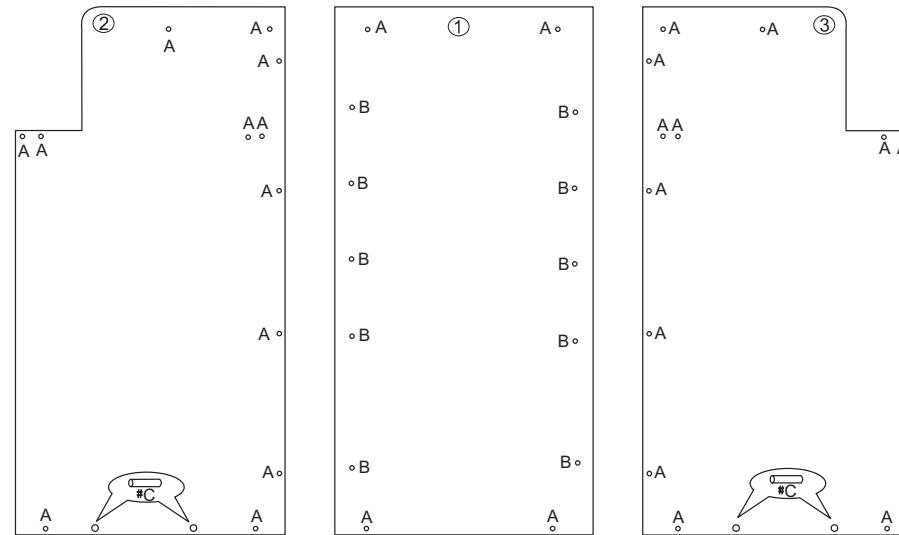


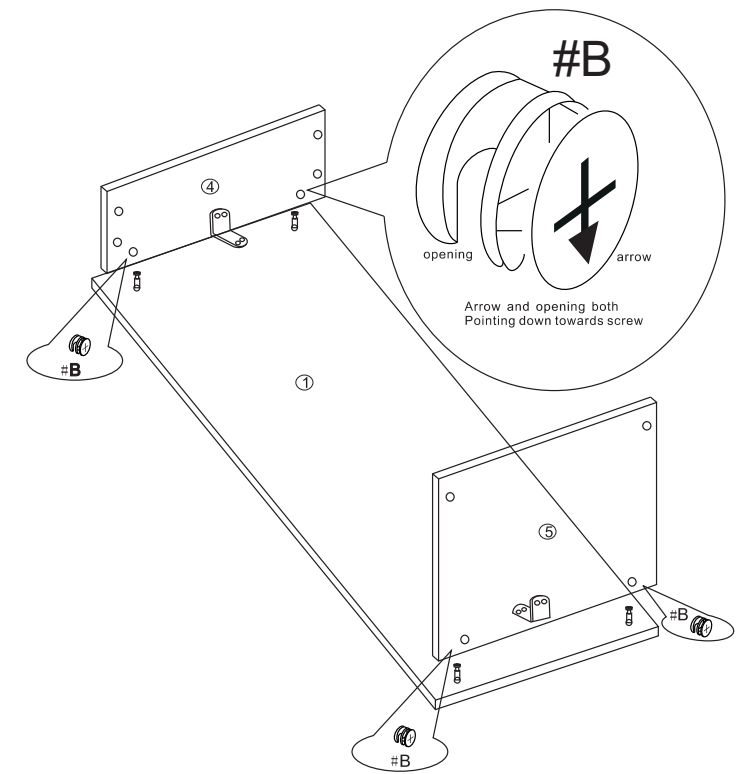
WRU-32

- 1 Back Panel
- 2 Right Panel
- 3 Left Panel
- 4 Top Panel
- 5 Bottom Panel
- 6 Cross Supports
- 7 Fiberglass Cover
- 8 Door
- 9 Stainless Steel Kick Plate

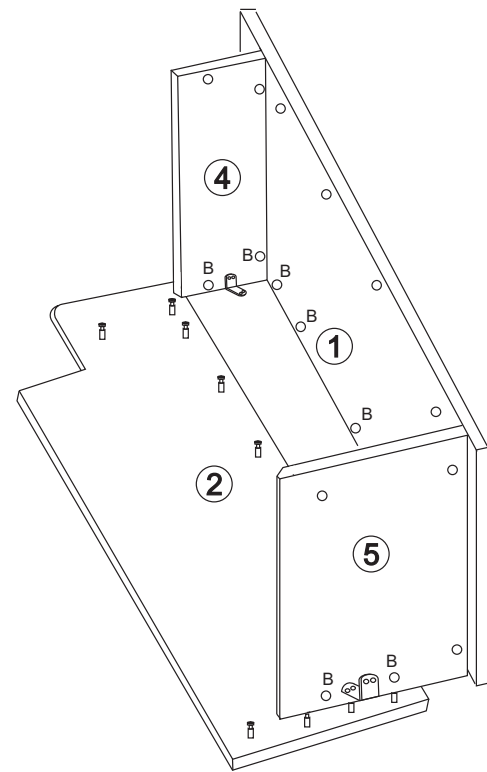
- #A screw (w/rubber grip) 28 pcs
- #B screw cap 28 pcs
- #C screw 4 pcs
- #D wood dowel 4 pcs
- #E door hinge 2 pcs
- #F corner brace 6 pcs



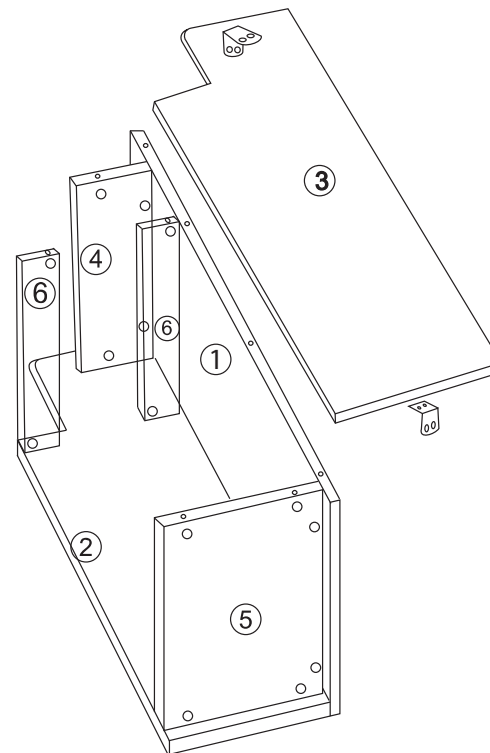
1. Screw #A into #1 and #3 panels do not over tighten, stop when rubber grip reaches surface of board.
2. Insert #D wooden dowels into holes on #2 and #3 panels.
3. Insert #B screw caps into #1 panel. Turn adjust all #B screw caps so that the arrow is facing the screws they are to lock.



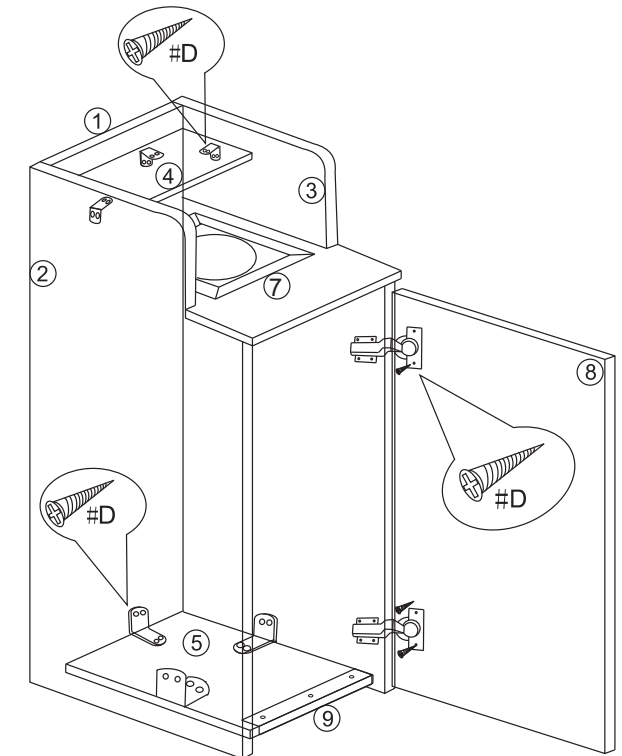
4. Insert #B screw caps into #4 and #5 panels. Turn and adjust #B screw caps so that the arrow is facing the screws they lock.
5. Attach #4 and #5 panels to #1 panel. Then turn all #B screw caps to lock. Do not over-tighten.
6. Use #F corner braces to secure #1, #4 and #5 panels with #C screws.



7. Attach #2 panel to the right of the panel set assembled previously. Secure all #B screw caps on panels #1, #4 and #5.
8. Use #F corner brackets to secure #2 panel to panel set.



9. Insert #B screw caps into two #6 cross supports, turn and adjust #B screw caps so the arrow is facing towards the screws they are to lock.
10. Attach #6 cross supports onto #2 panel.
11. Attach #3 panel to the left side of panel set assembled in previous steps. Secure all #B screw caps to lock.
12. Use #F corner brackets to secure #3 panel to panel set.



13. Place #7 cover on cross supports.
14. Add hinges to #8 door, then attach door to #3 panel with #C screws.
15. Attach #9 kick panel to front of #5 panel with #D screws.