

Grindmaster Corporation 800 Series Coffee Grinders

Operation and Instruction Manual

for

Models 810, 835, 865, 875 and 890

Table of Contents

| | |
|------------------------------|-----|
| Installation | 3 |
| Operating Instructions | 3 |
| Grind Adjustment | 4 |
| Shear Disc Replacement | 4-5 |
| Cleaning Instructions | 5 |
| Lubrication | 5 |
| Troubleshooting Guide | 6 |
| Exploded View | 7-9 |
| Wiring Diagrams | 10 |

Prior authorization must be obtained from Grindmaster Corporation for all warranty claims.



Model 890



GRINDMASTER™
CORPORATION

Grindmaster Corporation

4003 Collins Lane
Louisville, Kentucky 40245 USA
(800) 695-4500 (USA & Canada only)
(502) 425-4776
FAX: (502) 425-4664
www.grindmaster.com

Installation Instructions

1. Please read this manual before operating the grinder.
2. Carefully remove grinder from carton.
3. Place grinder in position on shelf, counter or other flat surface.
4. Plug grinder into standard electric outlet. Avoid using an extension cord.
5. Grind a small amount of whole bean coffee following operating instructions as described in this manual.
6. If there is any problem, consult the *Troubleshooting Guide* in this manual, (also on back of grinder.)
7. If you still cannot correct a problem, call Grindmaster's Service Department for help, (800) 568-5715 M-F 8 AM - 6 PM EST.

Operating Instructions

Your new coffee grinder is easy to operate and maintain. Before you place it in service, please have all personnel familiarize themselves with these instructions; then see that this manual is kept in a convenient place where it will always be available for ready reference.

How to Operate

1. Turn the selector knob to the desired grind setting.
2. Fill the hopper with the desired type and amount of whole bean coffee. Close the lid.
3. Place the bag underneath the spout.
4. Press the start button. *810 model - Press the grinder switch to the ON position.
5. The grinder will automatically stop when the bag is removed.**
* 810 model - Once coffee is ground, press the grinder switch to the OFF position or grinder will continuously run.
** On models 835 and 875 the STOP button may be pressed after the grinder has completed grinding.
6. Remove bag from coffee spout once coffee is ground.

Grinds

Before shipment, your grinder is adjusted to accurately grind for each brewing method indicated. The grinding burrs are made of an extremely hard and wear resistant alloy. From time to time grind adjustments (see Grind Adjustment section in this manual) may be necessary as the burrs wear. If the grind runs coarser than expected after normal adjustment and the grind time has increased, the burrs may have excess wear and should be replaced. The burrs are warranted for (3) years or 30,000 pounds of coffee. Ask for a copy of our complete Warranty for details. New burrs should always be installed as a pair, never one or the other, as they are accurately ground and lapped in pairs.

Circuit Breaker

This grinder is equipped with a circuit breaker to protect the motor from overloading. When the circuit breaker operates, the reset button will pop out approximately 1/4" which then cuts off power to the grinder. The reset button is located on the front panel of the Model 810, 835 and 875. To reset the circuit breaker, push in the reset button. You will hear a click as it resets. If the grinder does not operate after resetting the circuit breaker, there may be an obstruction in the grinding mechanism that is stalling the motor. Turn the grind selector knob all the way to the left. Try restarting the grinder. If the circuit breaker "trips" again, the obstruction was not able to pass. In this case, the Grinder Head should be cleaned out as described in the Shear Disc Replacement section of this manual.

Current

It is essential that full voltage and amperage always be available as it takes full power to grind coffee. **NEVER** connect to an overloaded line or a two or three way plug, otherwise serious damage to the motor will occur. **DO NOT USE AN EXTENSION CORD.**

Protection

The grinder is equipped with both a circuit breaker and a shear disc release to protect the motor and burrs if a foreign object, such as a nail or rock, gets into the coffee.

Grind Adjustment

Tools required: Large blade and medium Phillips head screwdrivers

In order to adjust the grind, follow these steps (Refer to figure A):

1. Remove all coffee from the hopper.
2. Set selector knob to the finest setting (Espresso or Turkish) depending on the model.
3. Loosen both knob retainer screws in selector knob one turn only.
4. While pressing the bag switch, located behind the spout, press the START button so that the grinder will run during adjustment.

810 model - Press the ON or START button so that the grinder will run during adjustment.

5. With the grinder still running, turn the adjusting screw in the center of the selector knob slowly to the right until a slight clicking noise is heard. Immediately turn the adjusting screw to the left one grind setting. This is the finest grind obtainable.
6. Tighten both of the knob retainer screws. Once the ESPRESSO grind has been set (Turkish for Model 835, 875, 890), the other grind settings will automatically set correctly.
7. Press the STOP or OFF button.

IMPORTANT: Always be sure the grinding burrs are not touching while the machine is running on the ESPRESSO/TURKISH setting. Otherwise serious damage to the motor may result.

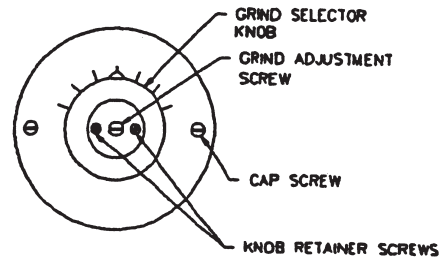


Figure A

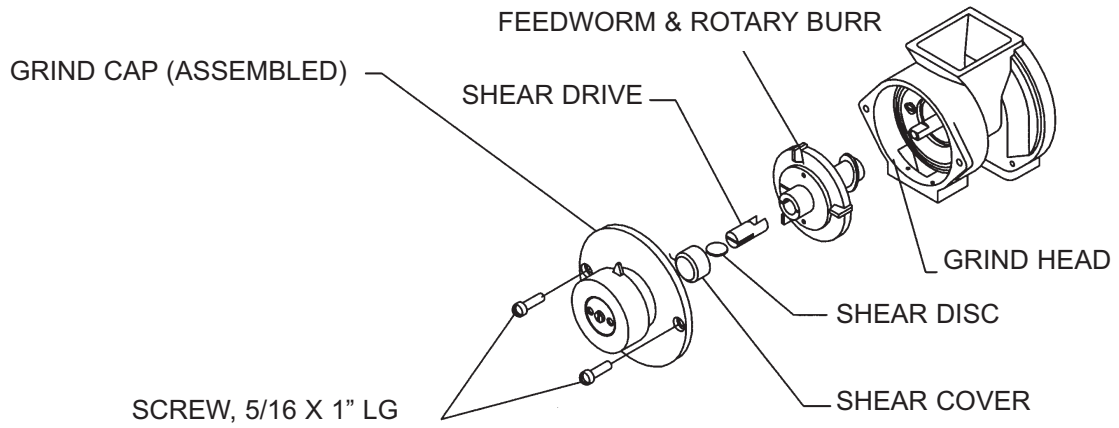
Shear Disc Replacement

If the motor should run and no coffee is dispensed, the shear disc release may have operated. Should this occur, perform the following operations in the sequence given (Refer to Figure B on page 5).

Note: See appropriate Exploded View for part numbers.

Tools Required: Flat Blade Screwdriver and Pliers

1. Unplug machine.
2. Remove all of the coffee beans from the hopper.
3. Remove the Grind Cap by taking out the 2 Cap Screws.
4. Pull out the Revolving Burr and Feedworm Assembly. Clean out the Grind Head, removing all coffee particles from inside the Grind Head and the Grind Cap so that it can be reset properly.
5. Check that no obstruction has been caught on the surface of the teeth of either burr. Remove the Shear Cap and broken pieces of the Shear Disc. You are now ready to reassemble the grinder mechanism.
6. Slide the Revolving Burr and Feedworm Assembly onto the Drive Shaft. Insert the shear drive so that the Motor Shaft tongue engages into the shear drive notch.
7. Insert a new Shear Disc by aligning the slot in the Shear Drive with the slot in the hub of the feedworm.
8. Replace the Shear Cap and Grind Cap. Make certain that the Grind Cap is screwed on tight and is seated properly, not cocked, against the head. Without a proper seat, a proper grind cannot be obtained.
9. Your grinder is now ready to grind.



Model 865/890

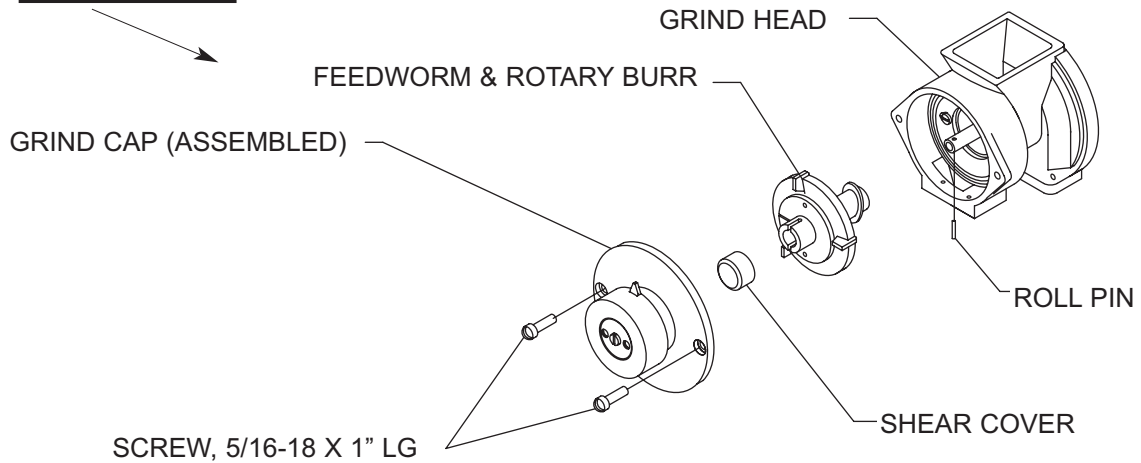


Figure B

Cleaning Instructions

The outside of machine can be cleaned with a damp cloth or common household polishing wax. See Shear Disc Replacement section in this manual for instructions on assembling and disassembling the grinder parts. All parts that are in contact with food must be washed with warm soapy water, rinsed, sanitized and air-dried.

Note: The person cleaning the parts should do so with clean hands. Before reassembling, wipe the motor shaft with 2 or 3 drops of common household cooking oil in the area of the feedworm engagement to make the assembly easier.

Lubrication

All bearings have been oiled for life. No further oiling is necessary.

Troubleshooting Guide

The following procedures must be performed by a qualified service technician.

| PROBLEM | POSSIBLE CAUSE | SOLUTION |
|---|---|---|
| Grinder will not start when START button is pushed. | <ul style="list-style-type: none"> • Bag not under spout. • Plug not in outlet properly. • No power to outlet. • Circuit breaker has tripped | <ul style="list-style-type: none"> • Place bag underneath spout. • Install plug in outlet. • Check outlet with lamp or radio to verify outlet has power. • Reset circuit breaker by pushing in reset button until you hear a click. |
| Grinder runs or hums but no coffee is dispensed. | <ul style="list-style-type: none"> • Shear disc is broken. • Obstruction in opening to grinding chamber. | <ul style="list-style-type: none"> • Replace shear disc. See Shear Disc Replacement section or instructions on back of grinder. • Unplug Unit. Empty beans out of hopper and clear obstruction. See Shear Disc Replacement section for disassembly and assembly instructions. |
| Excessive amount of chaff flying about. | <ul style="list-style-type: none"> • Defective chaff mixer spring. • Outlet not properly grounded. • Static electricity. | <ul style="list-style-type: none"> • If bent, broken, or missing, replace spring. • If stuck open with coffee, clean out coffee to free spring. • Check power cord end and outlet for proper ground. • Tighten all nuts, bolts and screws and verify wall outlet is grounded. |
| Circuit breaker continuously trips. | <ul style="list-style-type: none"> • Insufficient current due to use of extension cord. • Insufficient current due to overloaded line. • Grind setting needs adjustment. | <ul style="list-style-type: none"> • Plug unit directly into outlet. Do not use extension cord. • Designate single line for grinder. Do not use multi-outlet box. • Adjust grind to coarser setting. See Grind Adjustment section. |

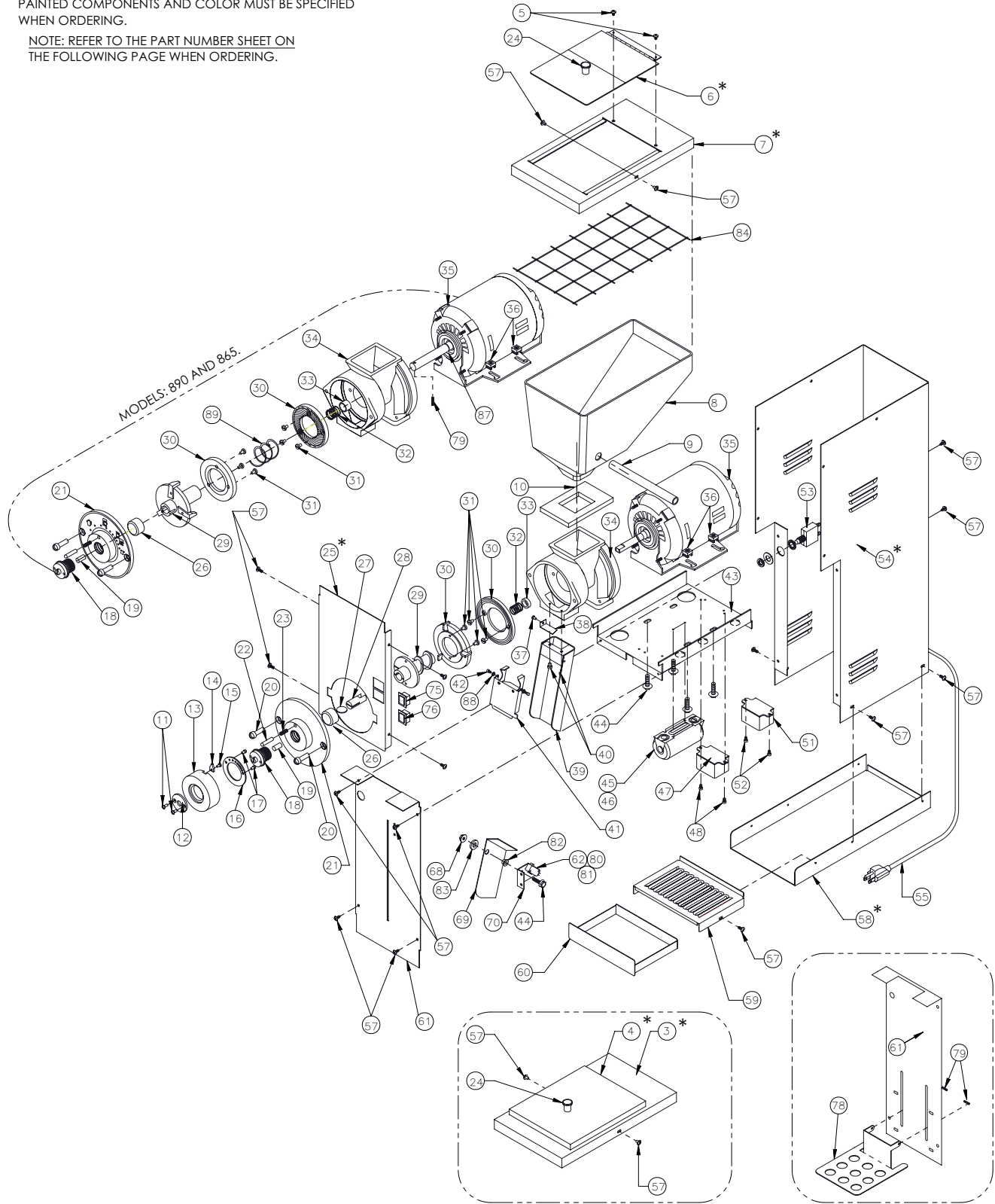
If you still need help, call our Service Department, at (800) 695-4500 (USA & Canada only) or (502) 425-4776 (Monday through Friday 8am-6pm EST) or an authorized service center in your area. Please have the model and serial number ready so that accurate information can be given.

Prior authorization must be obtained from Grindmaster Corporation's Technical Services Department for all warranty claims.

800 Series Exploded View

PART NUMBERS INDICATED BY AN ASTERISK (*) ARE PAINTED COMPONENTS AND COLOR MUST BE SPECIFIED WHEN ORDERING.

NOTE: REFER TO THE PART NUMBER SHEET ON THE FOLLOWING PAGE WHEN ORDERING.



DWG NO. 86151

800 SERIES SANITATION TOP AND LID
KIT NO: 83426K *

811 TALL LOWER FRONT
KIT NO: 83299K

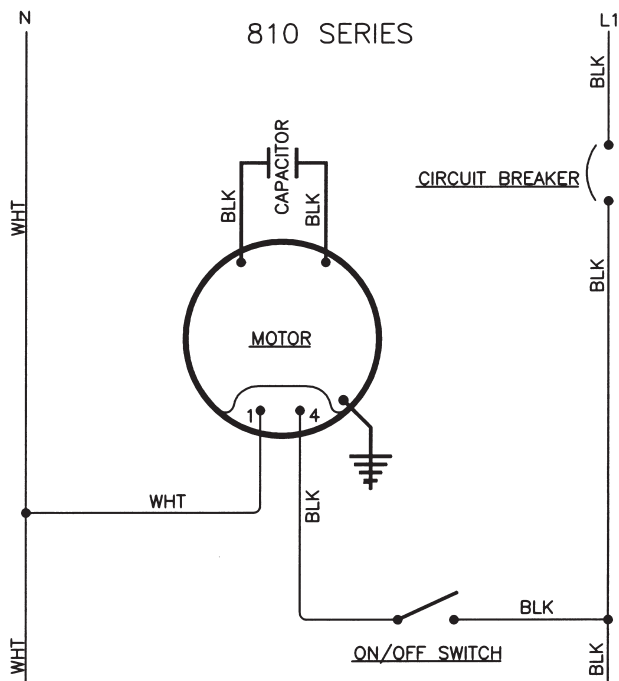
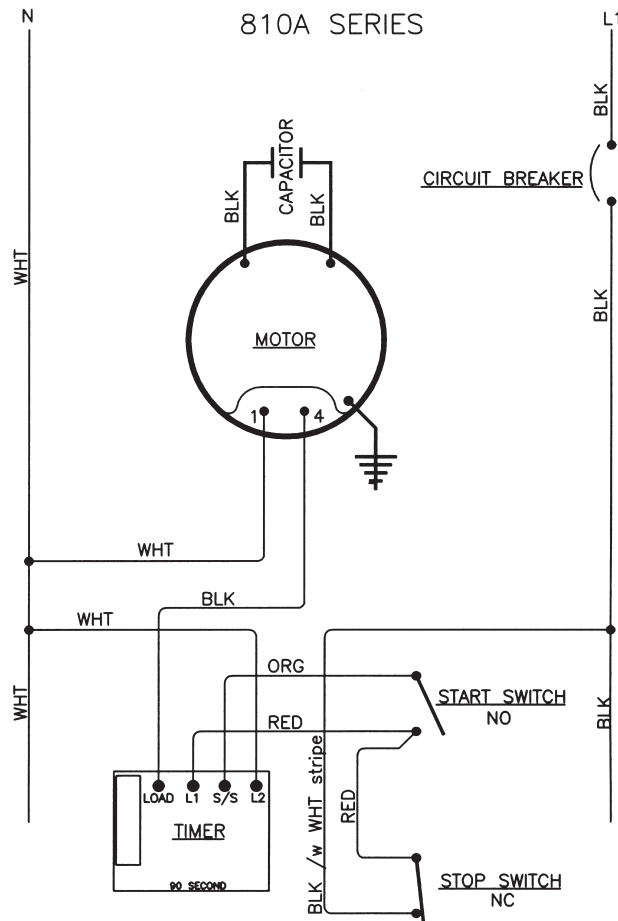
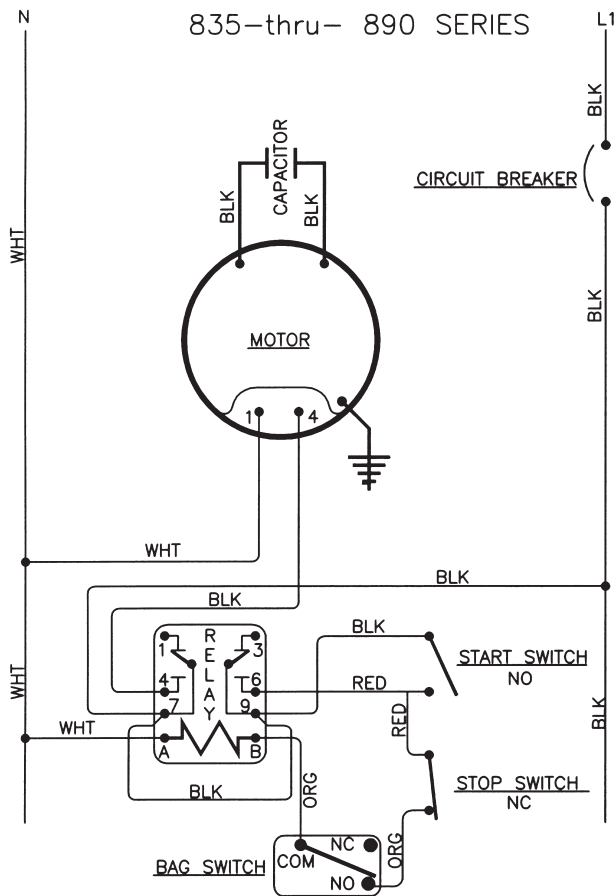
800 Series Parts List - 120V

| ITEM # | DESCRIPTION | 120V GROCERY GRINDER PART NUMBERS FOR THESE MODELS: | | | | | | |
|--------|------------------------------------|---|--------|----------|---------|---------|---------|--------|
| | | 810 | 810A | 810 TALL | 835 | 875 | 890 | 865 |
| 2 | Washer, #8 internal tooth | 86822 | | | | | | |
| *3 | Top, 800 series sanitation * | 83451RK and 83451BK - all models | | | | | | |
| *4 | Lid, 800 series sanitation * | 83450RK and 83450BK - all models | | | | | | |
| 5 | Screw, #8 x 1/4 ph truss hd | 86875 | 86875 | 86875 | 86875 | 86875 | 86875 | 86875 |
| *6 | Lid, bifold hinge * | 88704RK and 88704BK - all models | | | | | | |
| *7 | Top, bifold lid * | 83308R and 83308B - all models | | | | | | |
| 8 | Hopper | 83356 | | | 88280 | | 83356 | |
| 9 | Finger guard | 83324 | | | | | | |
| 10 | Gasket, hopper | 88211 | | | | | | |
| 11 | Screw, # 8-32 x 3/8" slotted ovl | 86914 | | | | | | |
| 12 | Plate, knob retainer | 82024 | | | | | | |
| 13 | Knob, grind select | 82022 | | | | | | |
| 14 | Pointer, knob | 88027 | | | | | | |
| 15 | Screw, # 6-32 x 1/4" | 86866 | | | | | | |
| 16 | Plate, detent | 83361 | | | 82025 | | | |
| 17 | Screw, # 8-32 x 1/4" | 86224 | | | | | | |
| 18 | Screw, grind adjust | 82023K | | | | | 86434 | |
| 19 | Pin, grind adjust | 86110 | | | | | | |
| 20 | Screw, 5/16-18 x 1" lg. | 86887 | | | | | | |
| 21 | Grind cap | 82021 | | | | | 86439 | |
| 22 | Plunger, detent | 83318 | | | | | | |
| 23 | Spring, detent | 83443 | | | | | | |
| 24 | Knob, Lid | 86223 | | | | | | |
| *25 | Front panel * | 83316 * | 83301 | 83316 * | 83301 * | 83363 * | 83363 * | 83301 |
| 26 | Cover, shear | 86355 (70483 for Sanitary Models) | | | | | | |
| 27 | Disc, shear | 86123 | | | | | 86620 | |
| 28 | Drive, shear | 86154 | | | | | | |
| 29 | Feedworm | 85188K | | | | | 86468 | |
| 30 | Burr set | 85281WK | | | | | 86430 | |
| 31 | Screw, #10-32 x 5/16" | 86812 | | | | | | |
| 32 | Tension spring | 86118 | | | | | 86438 | |
| 33 | Thrust collar | 86304 | | | | | 86428 | |
| 34 | Grind head | 84171S | | | 84172 | | 86435 | |
| 35 | Motor, 1/2 hp 115VAC 60 Hz | 86419 | | | | | 86581 | |
| 36 | Nut, 1/4-20 cage | 86864 | | | | | | |
| 37 | Screw, chaff spring | 07009-02 | | | 86806 | | | |
| 38 | Chaff spring | 84154 | | | 82026 | | | |
| 39 | Spout | 88033 | | | 80088 | 82019 | | |
| 40 | Screw, # 8-32 x 3/8" lg | 86807 | | | | | | |
| 41 | Spout flap | ----- | | | | | 82036 | |
| 42 | Screw, spout flap | ----- | | | | | 86993 | |
| 43 | motor shelf | 83334 | | | | | | |
| 44 | Bolt, 1/4-20 x 5/8 | 86872 | | | | | | |
| 45 | Capacitor, 115 Vac 60 Hz | 86144 | | | | | | |
| 46 | Screw, 8-32 x 3/8" | 86874 | | | | | | |
| 47 | Relay, 115 VAC | ----- | | | | | 85303 | |
| 48 | Screw, 8-32 x 1/4" | 83247 | | | | | | |
| 49 | Timer, 115VAC 90 sec. | 86449 | | | ----- | | | |
| 50 | Screw, 8-32 x 1 1/4" lg | 86791 | | | ----- | | | |
| 53 | Circuit breaker, 10 amp for 115vac | 86618 | | | | | | |
| *54 | Casing, grocery * | 83332* | 83332* | 70553* | 83332* | 83362* | 83362* | 70553* |
| 55 | Power cord, standard 115vac | 86222 | | | | | | |
| 56 | Strain relief, standard cord | 86071 | | | | | | |
| 57 | Screw, # 10 x 1/2" | 86868 | | | | | | |
| *58 | Base* | 83302* | | | 83321* | | | |
| 59 | Tidy tray cover | 83322 | | | | | | |
| 60 | Tidy tray drawer | 83323 | | | | | | |
| *61 | Lower front* | 83305 | 83305 | 83299 | 80072 | 82014K | | |
| 62 | Switch, micro | 80083 | | | | | | |
| 64 | Hole plug | ----- | | | 83737 | ----- | | |
| 68 | Nut, 8-32 KEPS | ----- | | | 86810 | ----- | | |
| 66 | Bag actuator | ----- | | | 80068 | 80084 | | |
| 67 | Bracket, switch | 83250 | | | | | | |
| 75 | Switch, start | 70449 | 70445 | 70449 | 70445 | 88056 | 88056 | 70445 |
| 76 | Switch, stop | 83327 | | | 83327 | 88057 | 88057 | 83327 |
| 78 | Platform, bag | ----- | | | 85252 | ----- | | |
| 79 | Pin, roll | ----- | | | 83779 | 86620 | | |
| 80 | Screw, 4-40 x 5/8" sl bd hd | 86928 | | | | | | |
| 81 | Nut, 4-40 hex | 86929 | | | | | | |
| 82 | Bushing, Flanged | 83252 | | | | | | |
| 83 | Bushing, Spacer | 83253 | | | | | | |
| 84 | Harness, wiring 120 vac | 83341 | 83333 | 83341 | 82029 | | | |
| 79 | Harness, bag switch | 80086 | | | | | | |
| 88 | Eylet, 0.162 I.D. Rolled Flange | 82039 | | | | | | |
| 89 | Feedworm spring | 86432 | | | | | | |

800 Series Parts List - 230V

| ITEM # | DESCRIPTION | 230V GROCERY GRINDER PART NUMBERS FOR THESE MODELS: | | | | | |
|--------|-----------------------------------|---|----------|---------|---------|---------|--------|
| | | 810 | 810 TALL | 835 | 875 | 890 | 865 |
| 2 | Washer, #8 internal tooth | 86822 | | | | | |
| *3 | Top,800 series sanitation * | 83451RK and 83451BK - all models | | | | | |
| *4 | Lid, 800 series sanitation * | 83450RK and 83450BK - all models | | | | | |
| 5 | Screw, #8 x 1/4 ph truss hd | 86875 | 86875 | 86875 | 86875 | 86875 | 86875 |
| *6 | Lid, bifold hinge * | 88704RK and 88704BK - all models | | | | | |
| *7 | Top, bifold lid * | 83308R and 83308B - all models | | | | | |
| 8 | Hopper | 83356 | | 88280 | | 83356 | |
| 9 | Finger guard | 83324 | | | | | |
| 10 | Gasket, hopper | 88211 | | | | | |
| 11 | Screw, # 8-32 x 3/8"slotted ovl | 86914 | | | | | |
| 12 | Plate, knob retainer | 82024 | | | | | |
| 13 | Knob, grind select | 82022 | | | | | |
| 14 | Pointer, knob | 88027 | | | | | |
| 15 | Screw, # 6-32 x 1/4" | 86866 | | | | | |
| 16 | Plate, detent | 83361 | | 82025 | | | |
| 17 | Screw, # 8-32 x 1/4" | 86224 | | | | | |
| 18 | Screw, grind adjust | 82023K | | | 86434 | | |
| 19 | Pin, grind adjust | 86110 | | | | | |
| 20 | Screw, 5/16-18 x 1" lg. | 86887 | | | | | |
| 21 | Grind cap | 82021 | | | 86439 | | |
| 22 | Plunger, detent | 83318 | | | | | |
| 23 | Spring, detent | 83443 | | | | | |
| 24 | Knob, Lid | 86223 | | | | | |
| *25 | Front panel * | 83316 * | 83316 * | 83301 * | 83363 * | 83363 * | 83301 |
| 26 | Cover, shear | 86355 (70483 for Sanitary Models) | | | | | |
| 27 | Disc, shear | 86123 | | | | 86620 | |
| 28 | Drive, shear | 86154 | | | | ----- | |
| 29 | Feedworm | 85188K | | | | 86468 | |
| 30 | Burr set | 85281WK | | | | 86430 | |
| 31 | Screw, #10-32 x 5/16" | 86812 | | | | | |
| 32 | Tension spring | 86118 | | | | 86438 | |
| 33 | Thrust collar | 86304 | | | | 86428 | |
| 34 | Grind head | 84171S | | 84172 | | 86435 | |
| 35 | Motor, 1/2 hp 230VAC 60 Hz | 86421 | | | | 86580 | |
| 36 | Nut, 1/4-20 cage | 86864 | | | | | |
| 37 | Screw, chaff spring | 07009-02 | | 86806 | | | |
| 38 | Chaff spring | 84154 | | 82026 | | | |
| 39 | Spout | 88033 | | 80088 | | 82019 | |
| 40 | Screw, # 8-32 x 3/8" lg | 86807 | | | | | |
| 41 | Spout flap | ----- | | | | 82036 | |
| 42 | Screw, spout flap | ----- | | | | 86993 | |
| 43 | motor shelf | 83334 | | | | | |
| 44 | Bolt, 1/4-20 x 5/8 | 86872 | | | | | |
| 45 | Capacitor, 115 Vac 60 Hz | 86179 | | | | | |
| 46 | Screw, 8-32 x 3/8" | 86874 | | | | | |
| 47 | Relay, 115 VAC | ----- | | | | 83106 | |
| 48 | Screw, 8-32 x 1/4" | 83247 | | | | | |
| 50 | Screw, 8-32 x 1 1/4" lg | ----- | | | | | |
| 51 | Relay, Motor Start, 230V | 86424 | | | | | |
| 52 | Screw, 6-32 x 1/4" | 83248 | | | | | |
| 53 | Circuit breaker, 5 amp for 230vac | 83107 | | | | | |
| *54 | Casing, grocery * | 83332* | 70553* | 83332* | 83362* | 83362* | 70553* |
| 55 | Power cord, 1.5MM CE | 61453 | | | | | |
| 56 | Strain relief, standard cord | 86071 | | | | | |
| 57 | Screw, # 10 x 1/2" | 86868 | | | | | |
| *58 | Base* | 83302* | | | 83321* | | |
| 59 | Tidy tray cover | ----- | | | | 83322 | |
| 60 | Tidy tray drawer | ----- | | | | 83323 | |
| *61 | Lower front* | 83305 | 83299 | 80072 | 82014K | | |
| 62 | Switch, micro | ----- | | | | 80083 | |
| 64 | Hole plug | ----- | | | | 83737 | |
| 68 | Nut, 8-32 KEPS | ----- | | | | 86810 | |
| 66 | Bag actuator | ----- | | | | 80068 | |
| 67 | Bracket, switch | ----- | | | | 83250 | |
| 75 | Switch, start | 70449 | 70449 | 70445 | 88056 | 88056 | 70445 |
| 76 | Switch, stop | ----- | | | | 83327 | |
| 78 | Platform, bag | ----- | | | | 85252 | |
| 79 | Pin, roll | ----- | | | | 83779 | |
| 80 | Screw, 4-40 x 5/8" sl bd hd | ----- | | | | 86620 | |
| 81 | Nut, 4-40 hex | ----- | | | | 86928 | |
| 82 | Bushing, Flanged | ----- | | | | 86929 | |
| 83 | Bushiiing, Spacer | ----- | | | | 83252 | |
| 84 | Harness, wiring 120 vac | 83341 | 83341 | 83253 | | | |
| 79 | Harness, bag switch | ----- | | | | 82029 | |
| 88 | Eylet, 0.162 I.D. Rolled Flange | ----- | | | | 80086 | |
| 89 | Feedworm spring | ----- | | | | 82039 | |
| | | ----- | | | | 86432 | |

Wiring Diagrams for 120 Volt 60Hz Units





GRINDMASTER™

C O R P O R A T I O N

Grindmaster® Coffee Grinders and Brewers • PrecisionBrew™ Brewing Systems • Espresso® Espresso Machines
Crathco® Hot Beverage Dispensers • Crathco® Cold and Frozen Beverage Dispensers • AMW Coffee and Tea Systems
Tel (502) 425-4776 • Fax (502) 425-4664 • 1-800-695-4500 (USA & Canada only)
P.O. Box 35020 • Louisville, KY 40232 • USA