

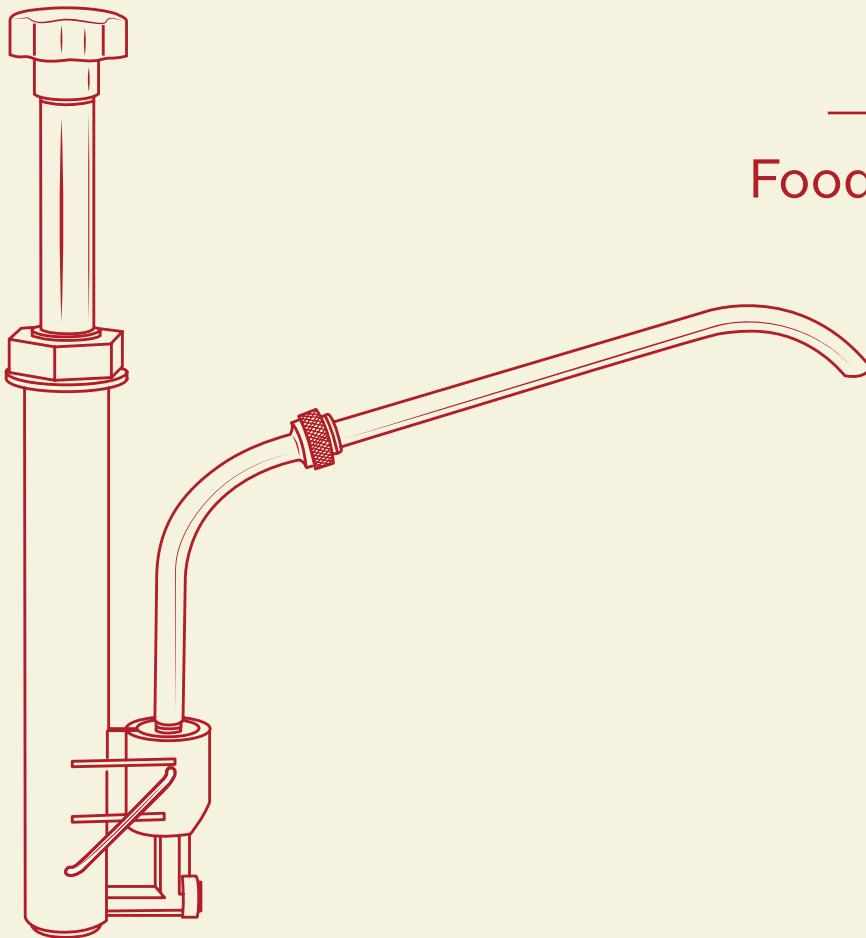


Assembly and Care Instructions

382PW35PUMP

Part Included

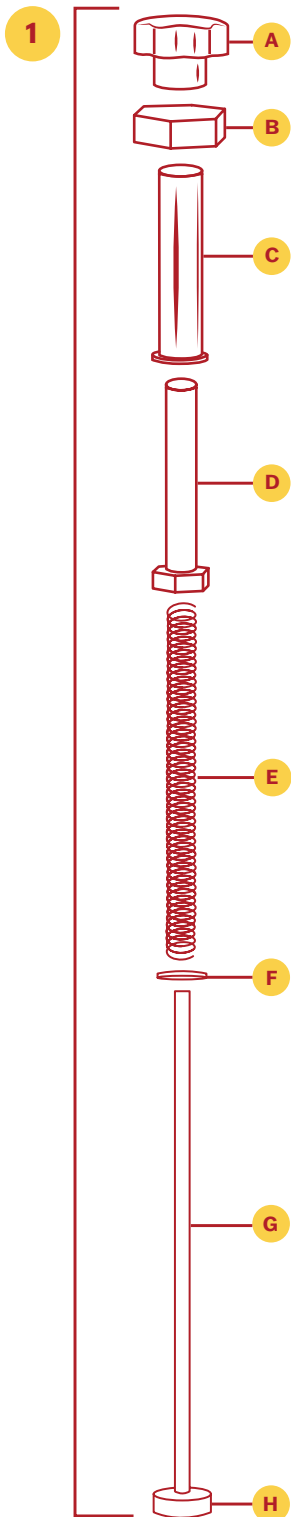
Food Grade PP Pump



05/23

Assembly and Care Instructions

382PW35PUMP



1. Plunger Assembly

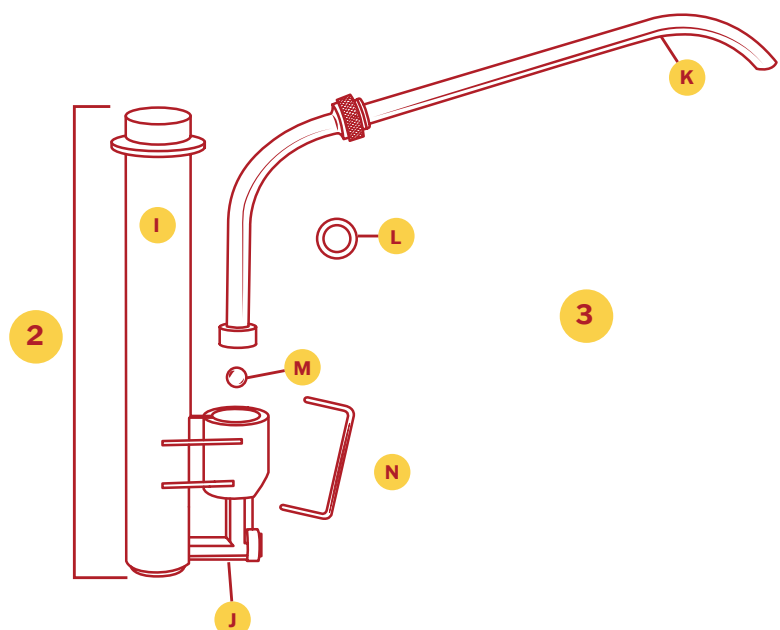
- A. Plastic Pump Knob
- B. Locking Collar
- C. Head Tube
- D. Head Insert
- E. Spring
- F. White Washer
- G. Piston
- H. Orange Silicon O-Ring

2. Valve Body and Plunger Cylinder

- I. Plunger Cylinder
- J. Valve Body (integrated with Plunger Cylinder)

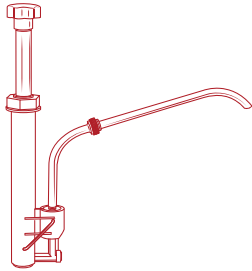
3. Pump Discharge Tube Assembly

- K. Pump Discharge Tube
- L. Pump Discharge Tube Locking Collar
- M. Ball
- N. "U" Pin Fixture

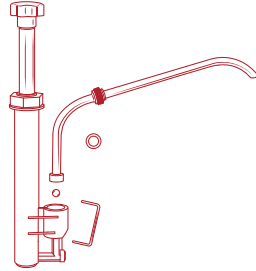


Assembly and Care Instructions

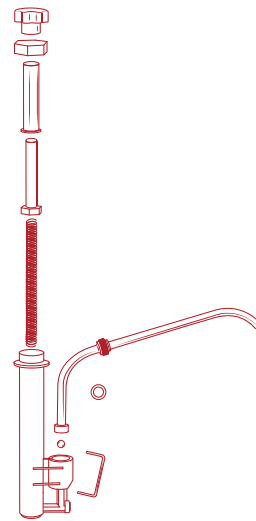
382PW35PUMP



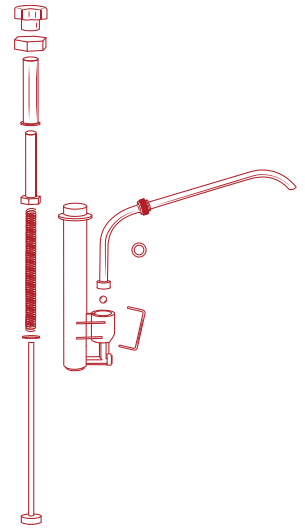
Assembled Pump



Pump Discharge Tube
Unassembled



Pump Discharge Tube
Unassembled and Plunger
Assembly Removed
from Cylinder



Pump Discharge Tube
Unassembled and Plunger
Fully Unassembled

Safety

All components must be cleaned before first use.

Follow local food safety guidelines and regulations to ensure the food product that is being stored and/ or served is at the proper temperatures.

Clean, rinse, sanitize, and dry parts at a minimum of every 24 hours.

Check local sanitation requirements.

NOTE: Pump is not insulated and is not intended to maintain cold temperatures.

Pump Cleaning

1. Regular cleaning and maintenance of your Carnival King pump will ensure proper operation and ultimate performance.
2. For pumps that have been in use, flush and rinse all pump parts with hot water by removing the pump from the body and putting the lower portion of the pump (valve body) into hot water. Pump the hot water through the pump until all food product has been expelled and only hot water is expelled.
3. Disassemble plunger assembly, lid, pump discharge tube assembly, pump cylinder, and valve. Clean all parts with hot water and dishwashing soap. Use flexible brush to clean inside the pump discharge tube and pump cylinder.
4. Rinse completely with warm, clean water.
5. Sanitize all parts accordingly to local sanitation requirements.
6. Air dry parts completely before assembling for use.

Assembly and Care Instructions

382PW35PUMP



Disassembly

1. Remove the pump discharge tube assembly (3) by using a flat head screwdriver to loosen and remove “U” pin fixture (N). Set aside “U” pin fixture and pull on pump discharge tube to release from valve body (J).
2. Remove the pump plunger assembly (1) by twisting the locking collar counterclockwise to loosen. Lift plunger assembly (1) out of plunger cylinder (I).
3. Pull down on head tube (C) and unscrew pump knob (A) counterclockwise to remove.
4. Lift off locking collar (B), head tube (C), head insert (D), spring (E), and white washer (F) from piston (G). Remove orange silicone o-ring (H) from base of piston.

Pump Assembly

1. Insert orange o-ring (H) onto base of piston (G).
2. Slide white washer (F) back onto piston (G). Slide spring (E) onto piston (G).
3. Slide plastic head insert (D) onto spring (E), followed by head tube (C) and locking collar (B).
4. Press down onto head tube (C) to expose top screw on piston (G). Screw black plastic pump knob (A) onto piston screw by turning clockwise until tight.

Pump Discharge Tube Assembly

1. Add ball (M) back into valve body (J).
2. Insert pump discharge tube (K) into Valve body (J). Ensure the hole on the pump discharge tube (K) and valve body (J) line up. Place “U” pin fixture (N) back onto valve body (J).

Final Assembly with Lid

1. Add lid to pump by threading the pump discharge tube (k) through smaller hole on lid and inserting plunger cylinder (I) through larger hole on the lid.
2. Add plunger assembly (1) into hole on plunger cylinder (I) and tighten locking collar (B) to complete assembly.

Fully Assembled Products:



Assembly and Care Instructions

382PW35PUMP



Troubleshooting

Problems with worn out o-rings, springs, and improperly installed parts can result in issues with food product leaking out of the pump plunger, or dripping from the pump discharge tube, or the plunger not returning properly after dispensing.

Please see the below situations to help aid in fixing these issues:

Problem	Solution
If food product is coming out of the locking collar on the plunger assembly above the lid...	The o-ring may not be installed properly on the base piston or could be ripped/ worn out, preventing the food product from entering the pump cylinder and coming out of the pump plunger assembly.
If food product is dripping from the pump discharge tube...	Disassemble the pump for full cleaning. Ensure the pump discharge tube is cleaned with an appropriate sized brush. Do a thorough inspection of all o-rings on the pump. If any o-ring is damaged, replace immediately before next use.
If the pump plunger does not return to the top position after dispensing....	Disassemble the pump plunger assembly from the pump cylinder assembly. Inspect all parts. If the spring is broken, replace immediately before next use. Ensure o-ring is installed properly at the base of the piston. Ensure all parts are assembled properly and ordered as shown in the assembly instructions.
If food product is not coming out of the pump discharge tube or is pumping inconsistently...	Begin by cleaning the pump thoroughly according to cleaning instructions. Food product in use could be too thick or contain particles (such as relish, tartar sauce, etc). Food product with particles is not recommended for use in this pump. Review and inspect the plastic restrictor/ dosage collar located on the head tube. Ensure collar is installed properly and not damaged.