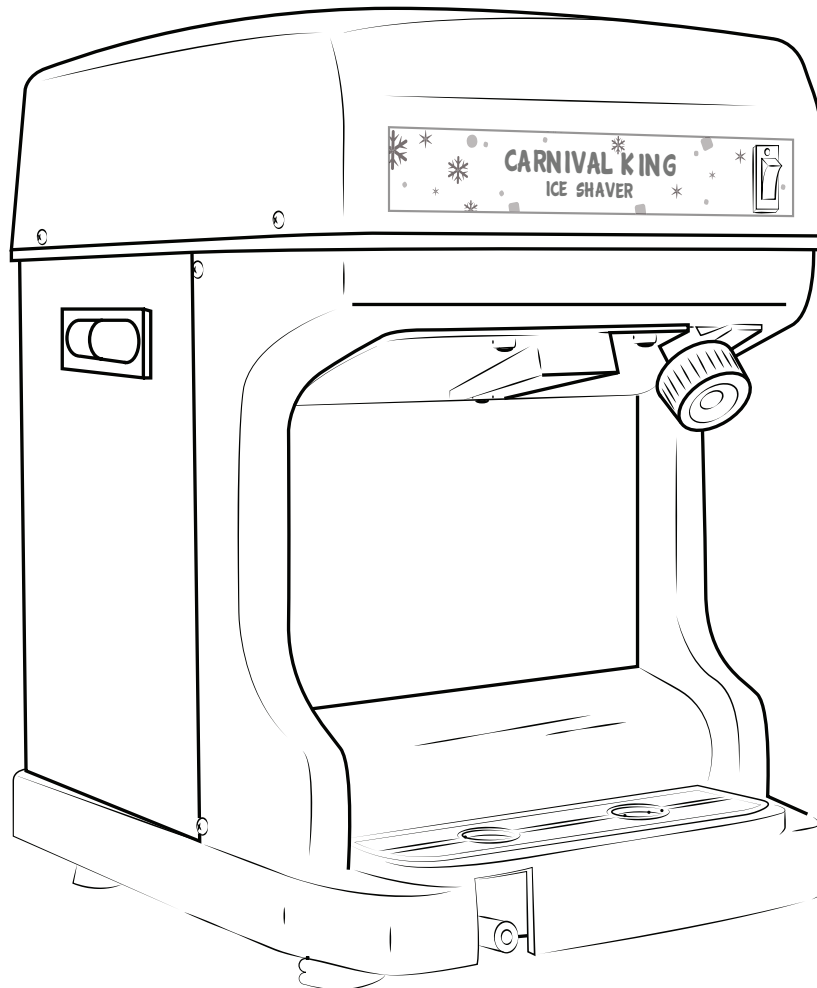


# CARNIVAL KING

## USER MANUAL



### ICE SHAVER MACHINE

Item #382ICS250



12/2020



[www.CarnivalKingSupplies.com](http://www.CarnivalKingSupplies.com)

# ICE SHAPER MACHINE MANUAL



## Items Included with this Unit

- Foot Pedal
- Drain Hose

## General Safety Precautions

To ensure safe operation, read the following statements carefully. This manual will outline safety warnings and precautions, operating, maintenance, and cleaning. The warnings and instructions reviewed in this manual cannot cover all possible conditions and situations that may occur. Factors such as caution and common sense cannot be built into this product and it is trusted the operator will follow these measures.

These precautions should be followed at all times. Failure to follow these precautions could result in injury.

**IMPORTANT: Do not remove any permanent instruction labels or the data labels on your appliance.**

**NOTE: The appliance is for indoor use only.**

To reduce risk of injury or damage to the unit:

1. Do not operate unattended.
2. Unit must be only used in a flat, level position.
3. No minor should operate this machine unsupervised. Keep hands, foreign objects, long hair, and loose clothing away from the ice blades while in use. Some areas may become hot while in use.
4. This machine must never be modified and should only be used for its intended purpose.
5. Always check that the ice shaver machine is plugged into a grounded outlet with the appropriate electrical supply.
6. Ensure that the wall outlet being used is properly grounded. If it is not, you must install a grounded outlet.
7. Before disconnecting from the power source, be sure that all switches have been turned OFF. To unplug the machine, firmly grasp the plug and remove from the outlet – never pull on the cord itself.
8. Ensure that the power outlet, plug and cord being used are in good, working condition. Even with a properly functioning power cord, keep water away from the cord and avoid letting your power cord run over carpets or heating devices.
9. Do not operate if unit has been damaged or is malfunctioning in any way.
10. Always use the machine in a clean and dry area.
11. Do not spray controls or outside of unit with liquids or cleaning agents.
12. When not in use, do not leave the machine running for more than 60 minutes.



# ICE SHAVER MACHINE MANUAL

## Ice Shaver Machine Specs



Item #	382ICS250
Overall Dimensions	11.5"W x 13.75"H x 17"D
Hopper Capacity	4 lb.
Frame Material	Plastic + Aluminum
Horsepower	1/3 HP
RPM	1440 RPM

Capacity	Up to 500 lbs. Per Hour
Wattage	250W
Voltage	120V
Amps	3.5A
Hertz	60Hz
Phase	1
Plug	NEMA 5-15P

## Function and Purpose

This unit is intended to be used for shaving and crushing ice in commercial foodservice operations only. It is not intended for household, industrial, or laboratory use.

Before using this equipment, it must be cleaned and **dried thoroughly**. Clean all surfaces before use. Failure to clean surfaces before using the unit could cause food contamination.

This ice shaver is intended for shaving ice cubes for use in shaved ice (i.e. Hawaiian Ice), sno-balls, and/or iced beverages; ice cubes should be a maximum of 2 inches in diameter. Larger pieces should be broken up before processing through the machine. Your Ice Shaver machine has a 4 lb. hopper and can produce up to 500 lb. of ice per hour.

## Installation and Operation Instructions

1. Place the Ice Shaver machine in a place where it cannot be pushed off the counter.
2. Keep the area at the front of the Ice Shaver clear for unobstructed access during operation.
3. Keep unit and power cord away from open flames, electric burners, or excessive heat.
4. Do not use an extension cord with this equipment.
5. NEVER allow any foreign or metallic objects around the shaver area or inside the hopper. Ice picks, scoops, and debris that may be in the ice can damage the blade.
6. Connect drain hose to front of unit. Drain hose funnels excess water to floor drain or basin tub.
7. This unit comes with an optional foot pedal switch for operating the unit. It should be located so it will not be a trip hazard or in an area of heavy traffic.
  - a. Do not leave foot switch accessible to inadvertent operation when left unattended or when not being used.
  - b. Turn Foot Pedal Power Switch OFF (located on the back) when ice shaver is not in use.
  - c. Do not bypass any machine or equipment safety features to use this foot switch.
  - d. Replace damaged cord immediately.

# ICE SHAVER MACHINE MANUAL



## Operation

1. Please ensure that the machine is on a level stable surface, the feet are intact and level.
2. Open the ice shaver lid and wipe the hopper with a dry cloth, check that the blade is firmly installed.
3. If using the foot pedal, install the foot pedal by plugging it into the back of the machine. Turn Foot Pedal Switch ON (located on the back of the machine).
  - a. Warning: do not leave foot switch accessible to inadvertent operation when left unattended or when not being used.
4. Lift the cover lid and load ice hopper with up to 4 lbs. of ice cubes, do not overfill. Make sure it is evenly loaded.
  - a. Allow ice cubes to temper for at least 20 minutes for finer and fluffier texture. We recommend not using ice straight from the freezer.
5. Close the lid and place a cup, bowl, or tub directly below the ice chute. Turn the Main Power Switch ON or press down on the Foot Switch. To stop shaving ice, release Foot Switch.
  - a. Warning: Ensure the front switch is OFF and/or your foot is off the pedal when lowering the lid.
  - b. Machine WILL NOT OPERATE unless the cover lid is closed (due to safety momentary switch).
6. Once all ice cubes are shaved and the hopper is empty, TURN the front switch to turn OFF or take your foot off the pedal.
  - a. Note: When refilling the hopper with ice – opening the hopper lid shuts off power. Foot pedal and switch will not work.
7. Repeat steps 4-6 for multiple batches
8. To adjust the ice texture, turn the Blade Adjustment Knob CLOCKWISE for a finer ice texture, COUNTERCLOCKWISE for a coarser ice texture.
9. Top with Carnival King Sno-Cone Syrup, mix with Regal Cocktail Syrups, or marshmallow fluff!



## Warning

### ELECTRIC SHOCK HAZARD

Keep water and other liquids from entering the inside of the equipment. Liquid inside the equipment could cause an electrical shock.

## Warning

Sharp blades, do not place hands in or near the ice holder while the motor is running.

## Compatible Items from



### Snow Cone Syrups

(382SNO)

1 Gallon Jug Available Individually or 4/Case

- Pour directly over ice or combine 2 parts water to 1 part syrup
- Perfect for snow cones and snowballs
- Enhances the appearance and taste of concession treats
- 128 servings per container
- 20 flavors available





# ICE SHAVER MACHINE MANUAL

## Compatible Items from



### Snow Cone Syrups

(382SNO)

1 Gallon Jug Available Individually or 4/Case

- Pour directly over ice or combine 2 parts water to 1 part syrup
- Perfect for snow cones and snowballs
- Enhances the appearance and taste of concession treats
- 128 servings per container
- 20 flavors available



## Regal Cocktail Syrups



## Choice and Carnival King Dessert Cups



## Cleaning

To maintain the appearance and increase the service life, clean your unit daily.

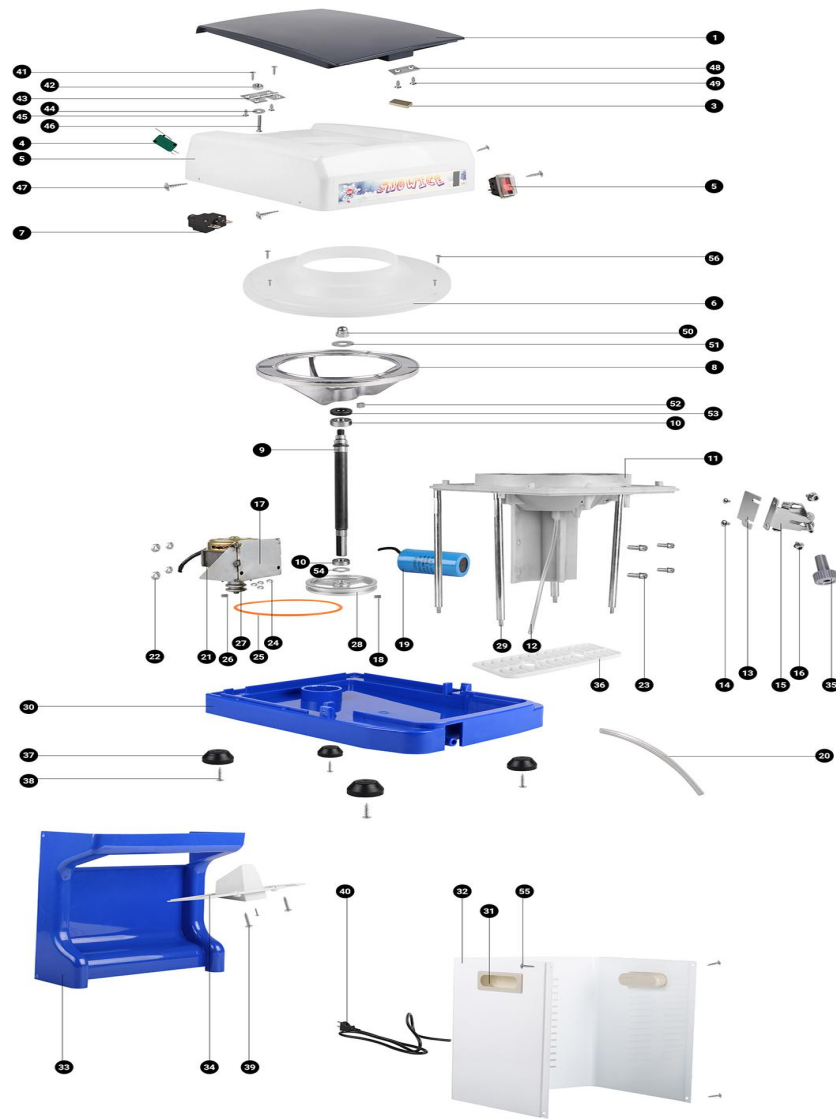
**NOTE: Do not clean the unit with steel wool.**

1. Operate the motor for several minutes to remove any water collection in the hopper.
2. Turn off the POWER switch and remove Foot Switch Pedal. Unplug the power cord from the electrical outlet.
3. Allow all remaining ice to melt and drain through hose into floor drain, basin, or bucket.
4. Using a clean cloth, wipe down the following items:
  - a. The hopper and hopper lid (Caution: Sharp Blades)
  - b. The ice chute (Caution: Sharp Blades)
  - c. All interior and exterior surfaces.
5. To clean the drip tray:
  - a. Remove the drip tray grid and rinse out tray with light soap and water, wiping down clean.
6. The exterior of the unit can be cleaned with a damp cloth, light soap and water.
  - a. Recommended: Use Sunbright (147SUNBRIGHT) for plastic frame.
7. Do not immerse in or use excessive water when cleaning this unit.
8. Only use food grade cleaners.

## Warning

Do not spray water or cleaning products. Liquid could contact the electrical components and cause a short circuit or an electrical shock. Do not use unit if power cord is damaged or has been modified.

# ICE SHAVER MACHINE MANUAL



## Replacment Parts

Parts Number	Name	Item #
13	Blade	#382ICSBLADE
--	Foot Pedal	#382ISPEDAL

## Blade Maintenance & Replacement Instructions

**WARNING: Be sure to switch OFF and unplug the machine for safety.**

1. Loosen and remove the mounting screws and remove the ice chute cover from body of unit.
2. Loosen and remove the screws between the blade holder and the blade. Remove the blade.