



## PROPANE GRILL INSTRUCTIONS

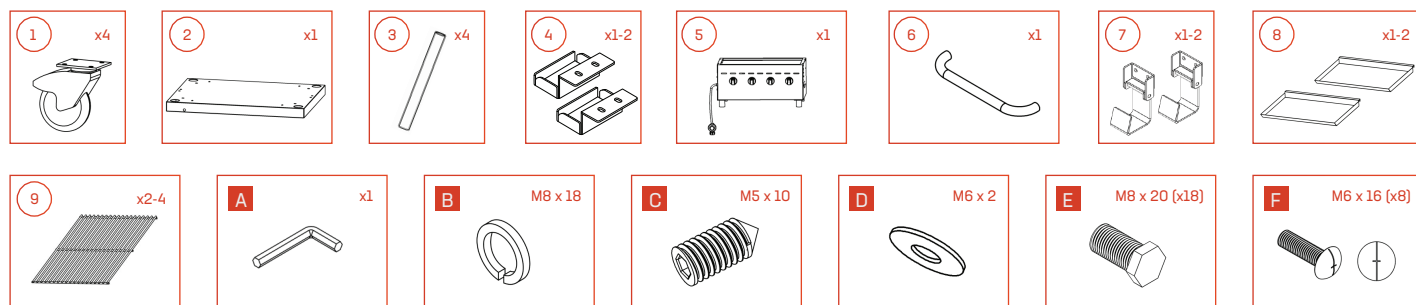
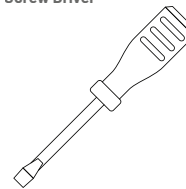
Please follow the steps below to ensure correct installation of your new Backyard Pro propane grill.

### TOOLS NEEDED:

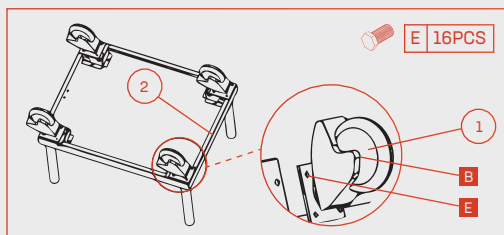
Wrench



Screw Driver



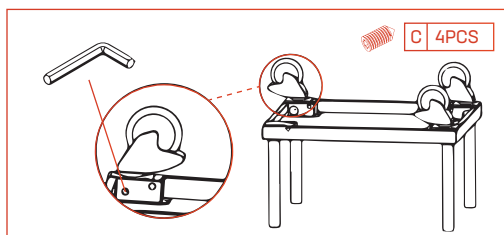
### STEP 1



Install casters (1) to under shelf (2) using Bolt-E (16PCS) and Spacer-B (16PCS).

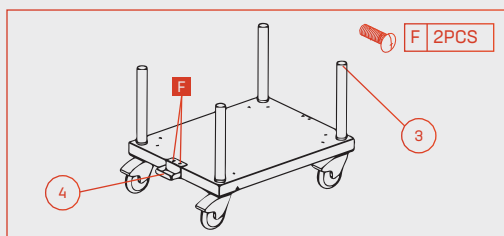
Set brakes on for safe assembly.

### STEP 2



Fasten legs (3) to the base using Allen wrench (A) and Screw-C (4PCS).

### STEP 3

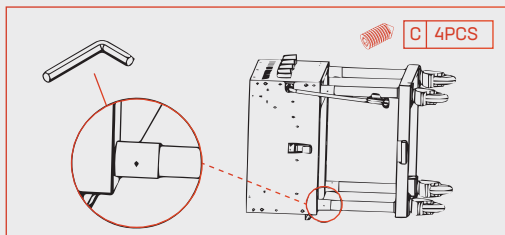


Install propane tank holder (4) to the under shelf (2) using Screw-F (2PCS).

**Note:** For 60 and 72 inch grills, these steps need to be repeated for the other side.

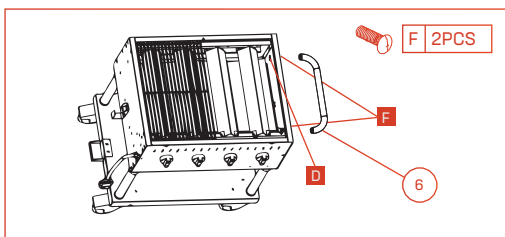


## STEP 4



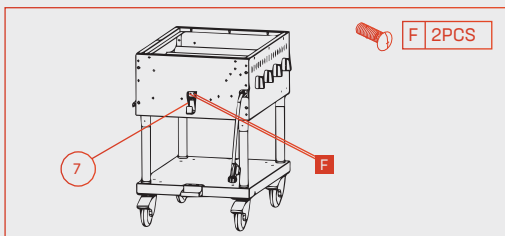
Tighten the legs (3) to the grill body section (5) using the Allen wrench (A) and Screw-C (4PCS).

## STEP 5



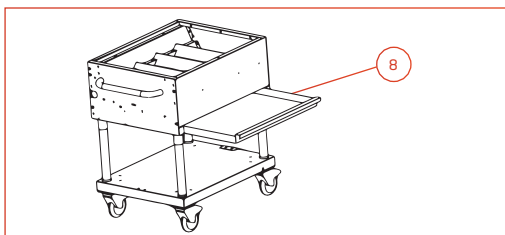
Install the handle (6) to the grill body section (5) using Screw-F (2PCS) and Washer-D (2PCS).

## STEP 6



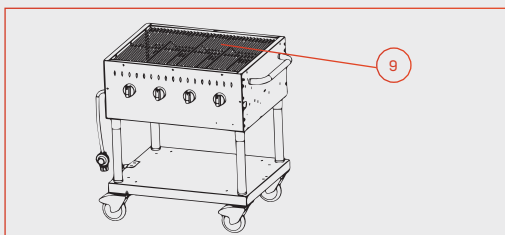
Attach the top propane tank holder (7) to the grill body section (5) using Screw-F (2PCS).

## STEP 7



Insert the grease tray(s) (8) into the back of the grill.

## STEP 8



Add the grates (9) to the top of the grill.

The grill is now fully assembled. ✓

## MANUAL IGNITION PROCESS

1. This grill has an igniter. However, if the automatic ignition fails to work, you can light it yourself manually. If the burner will not light after several attempts, then the burner can be lit by a match. Prior to using the match, allow a minimum of 5 minutes for any accumulated gas to dissipate.
2. Strike the grill match, causing a flame to ignite. For your safety, refrain from using a traditional lighter.
3. Use the match stick holder to insert the lit match next to the burner ports or ceramic tiles.
4. Burner should ignite immediately.