

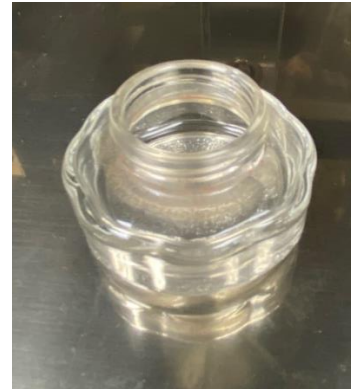
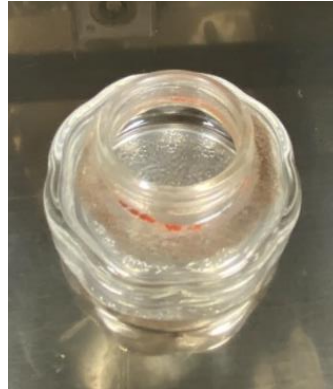
Panstop/Light Guard Kit (256-1033)

These instructions are designed to assist you with the installation of the Pan-stop/Light Guard (112-0458-A).

1. Prior to beginning:
 - a. Turn off the power at the OFF/ON switch on the control panel of the unit.
 - b. If the oven has been in use recently, allow the oven to cool sufficiently before proceeding.
 - c. Verify that all parts of the Light Guard (112-0458-A) kit are present
 - a. 112-0458-A Light Guard Qty 1
 - b. 112-0318-A Gasket Qty 2
2. Remove the Light covers from the light fixtures inside of the oven cavity by turning them in a counter-clockwise (↺) direction.

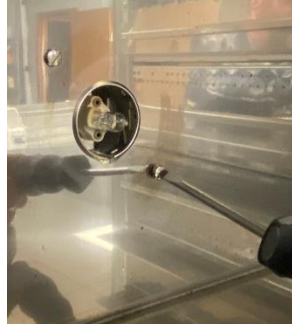


3. Notice if there is any residue of the gasket material remaining around the light fixture or on the light globe itself. If so, remove it with a soft cloth.



4. Then remove the screws from only the lower light fixture and set them aside for reinstallation later.

DO NOT REMOVE THE SCREWS FROM THE UPPER LIGHT FIXTURE.



5. Remove the plastic material from the Pan-stop/Light Guard.



6. Place the Pan-stop/Light Guard over the light fixtures allowing the screws of the top light fixture to sit on the corresponding holes of the Pan-stop/Light Guard.



7. Then replace the two screws through the Pan-stop/Light Guard lower holes to secure it to the oven wall and light fixture. Tighten securely, but do not *overtighten*.



8. Then replace the light gaskets with new gaskets onto the light globes and reinstall them onto the light fixtures.

Note: New gaskets are not required if existing gaskets are not damaged

