

Estella

CAFFÉ

USER MANUAL



Intertek
3058215

ESPRESSO GRINDER

236ECEG26

INDEX

Installation.....	2
Operation.....	2
Cleaning	2
Adjustments	3
Safety	3
Electrical Diagram	3
Specifications	4
Warranty.....	5

NOTE: Save these instructions for future reference.

INSTALLATION

- Make sure grinder is sitting on a flat surface.
- Before plugging in the grinder, make sure the voltage of the electric supply match machine ratings

Wall receptacle must be grounded.

Do not use extension cords or wall adapters.

OPERATION

1. Ensure that the hopper is securely fitted to the top of the grinder
2. Close the slide underneath the hopper
3. Fill the hopper with espresso beans and secure the lid
4. Open the slide to allow beans to fall into the grinder
5. Turn the power switch to the on position to begin grinding. Grounds will begin to fill the doser.
6. Turn off the power switch in order to stop grinding.
7. Put the portafilter below the doser
8. Pull the lever to dispense grounds into the portafilter. Be sure to pull forward until click is heard then allow the lever to return to its original position to ensure consistent dosing

If grounds are not dispensing ensure that properly dried espresso beans are being used. Make sure to pull dispensing lever entire way forward and then allow to release back to its original position.

CLEANING

Use included brush to sweep out excess grounds. Hopper may be removed to be cleaned. Use only nonabrasive chemicals and water to clean hopper. Ensure that hopper and machine are completely dry before using.

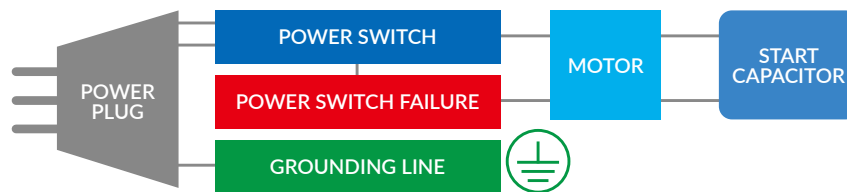
ADJUSTMENTS

To adjust coarseness of grounds thread the adjustment handle into the grind selector and rotate to desired position.

SAFETY

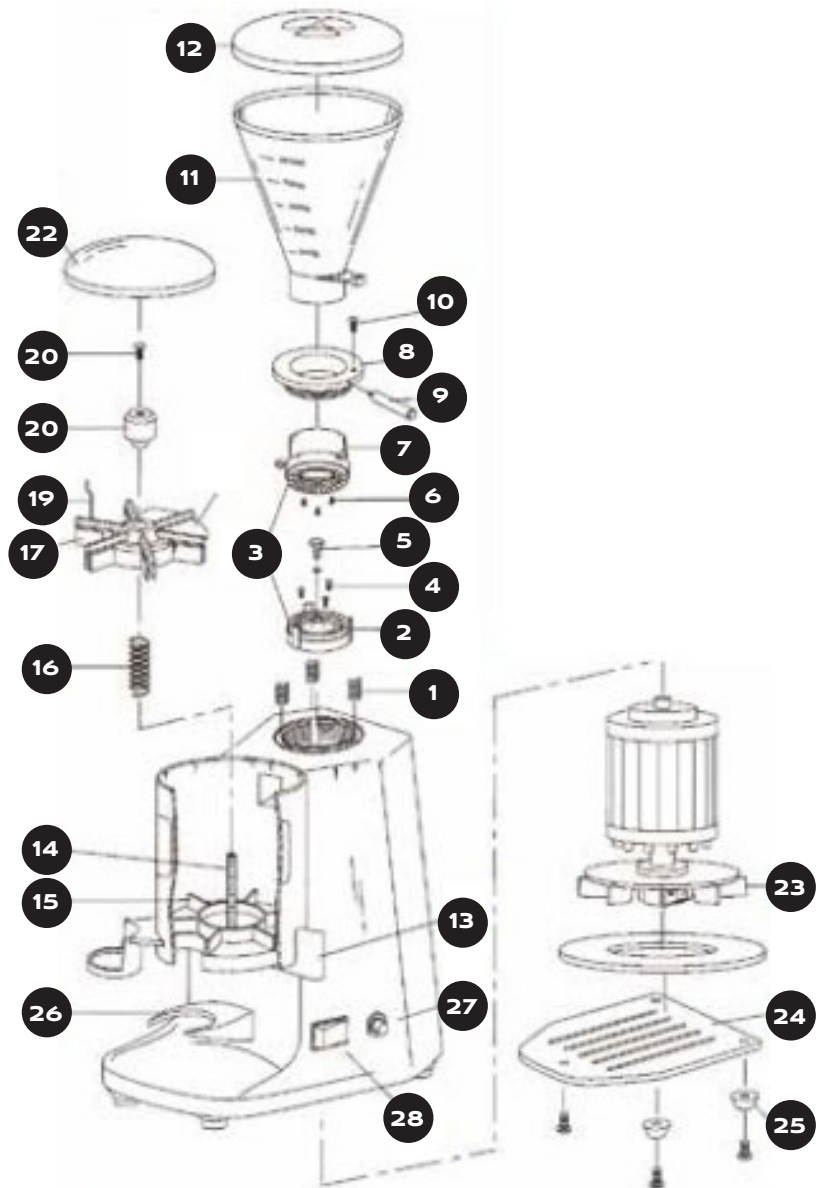
- This machine should only be used by qualified personnel
- Do not allow anyone under the age of 18 to use this machine
- Do not unplug the grinder by pulling on the cord
- Unplug the grinder before reaching in for any reason.
- Beware that grinder may continue to spin for a short period of time after turning off the machine
- Do not operate with wet hands
- Do not allow liquid to come into contact with the grinder
- Only put espresso beans into hopper

ELECTRICAL DIAGRAM



SPECIFICATIONS

- 1 Grind Adjustment Spring
- 2 Grinding Machine
- 3 Gear Plate Group
- 4 M4 Screw
- 5 Grinding Machine Anchor Screw
- 6 M4 Screw
- 7 Cone-Shape Coffee Beans Pouring Trough
- 8 Grinder Selector
- 9 Adjustment Stick
- 10 Grind Adjustment Abut Screw (M4 Screw)
- 11 Funnel
- 12 Funnel Lip
- 13 Portion Control Stick
- 14 Lead Screw
- 15 Powder Stirring Device
- 16 Quantity Control Spring
- 17 Portion Adjustment Group
- 18 Powder Blade
- 19 Steel Wire for Sweeping Powder
- 20 Device for Keeping High Degree of Portion
- 21 M5 Screw
- 22 Lid of Quantity Control Device
- 23 Cooling Fan



- 24 Foundation Lid
- 25 Foot Pad
- 26 Handle Frame
- 27 Electric Power Switch
- 28 Automatic Power Failure Installment