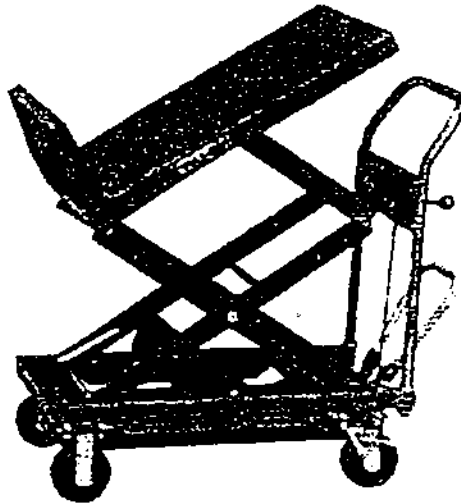


# Operating Manual

## Parts List



## Lift & Tilt Table

CART-400LT + CART-600-LT

### CAUTION!

Operator and owner MUST read this manual carefully and understand completely before using this lift & tilt table

# Lift &Tilt Table

## Operation and Service Manual

BEFORE OPERATING THE LIFT TABLE, READ THIS MANUAL CAREFULLY AND UNDERSTAND COMPLETELY. KEEP THIS MANUAL ON FILE FOR FUTURE REFERENCE. IF THIS IS LOST, PLEASE CONTACT YOUR LOCAL SUPPLIER FOR A NEW COPY. ALSO, IF THE WARNING/CAUTION DECAL ON THE UNIT IS LOST, PLEASE CONTACT YOUR LOCAL SUPPLIER FOR A NEW DECAL.

NOTE:On this manual, WARNING means the danger which can lead to death or serious injury. CAUTION means the danger which can lead to slight injury or property damage.

### 1.WARNINGS

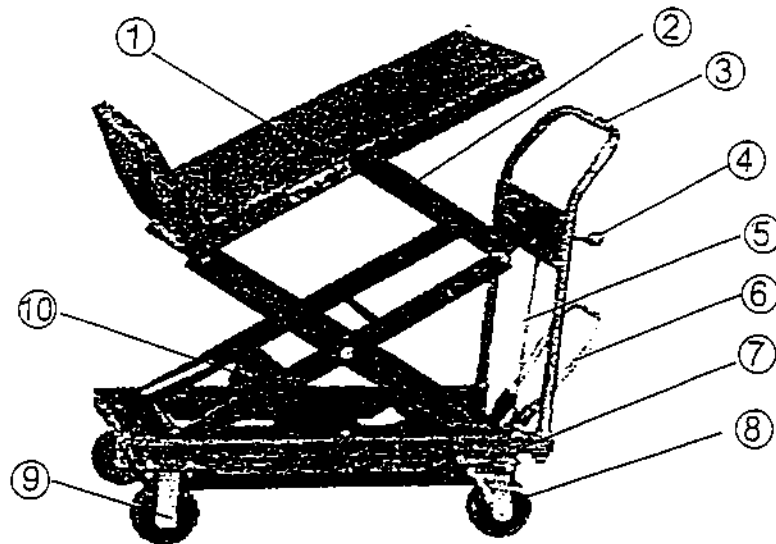
- 1.DO NOT put foot or hand in scissors mechanism.
- 2.DO NOT allow other person to stand in front of or behind lift table when it is moving.
- 3.DO NOT move lift table when table is in raised position. Load could fall down.
- 4.DO NOT enter under table.
- 5.DO NOT overload lift table.
- 6.DO NOT put foot in front of rolling wheels. Injury could result.
- 7.WATCH difference of floor level when moving lift table. Load could fall down.
- 8.DO NOT use lift table on slope or inclined surface, lift table may become uncontrollable and create danger.
- 9.DO NOT lift people. People could fall down and suffer severe injury.

### 2.CAUTIONS

- 1.Read this operation manual carefully and understand completely operating lift table. Improper operation could create danger.
- 2.This lift table is a movable lifter designed to lift or lower rated load on table. DO NOT use lift table for other purpose than its intended use.
- 3.DO NOT allow person to operate lift table who does not understand its operation.
- 4.DO NOT lower table too fast. Load could fall down and create danger.
- 5.KEEP watching the condition of load. Stop operating lift table if load becomes unstable.
- 6.Keep Lift table when sliding load on or off table.
- 7.DO NOT side or end load. Load must be distributed on at least 80 % of table area.
- 8.DO NOT use lift table with unstable, unbalanced, loosely stacked load.
- 9.Practice maintenance work according to service instructions.
- 10.DO NOT modify lift table without manufacturer's written consent.
- 11.REMOVE load from table and use safety stopper to prevent table from lowering when servicing lift table.
- 12.This lift table is not designed to be water resistant. Use lift table under dry condition.

CALIT-400-LT

28



1.Table

3.Handle

5.Discharge Valve Lever assembly

7.Chassis

9.front Wheels

2.Scissors Lever Assembly

4.Control lever

6.Pedal Bent Pipe

8.Two-way braking wheels

10.Connecting Lever Assembly

#### 4.DAILY INSPECTION

Daily inspection is effective to find the malfunction or fault on lift table. Check lift table on the following points before operation.



#### CAUTION

DO NOT use lift table if any malfunction or fault is found.

(1)Check for scratch,bending or cracking on the lift table.

(2)Check if there is any oil leakage from the cylinder.

(3)Check the vertical creep of the table.

(4)Check the smooth movement of the wheels.

(5)Check the function of brake.

(6)Check if all the bolts and nuts are tightened firmly.

## 6. Specifications

Model	Capacity (kg)	Table (mm)	Table Height(mm)	Stroke	L×W×H (mm)	Foot pedal to Max. height	Wheel (mm) $\phi$	Weight (kg)
CART-400-LT	180	500×755	325-800	475	1000×500×1260	16	125	81
			325-1260	935				
CART-600-LT	280	615×920	370-930	560	1100×615×1528	23	125	125
			370-1528	1158				

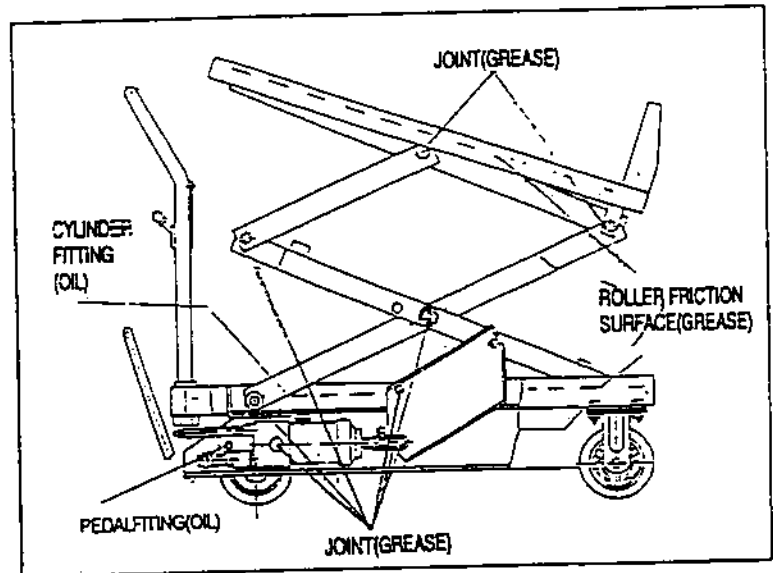
## 7. Service Instructions

7-1. Lubricate each point described below every month:

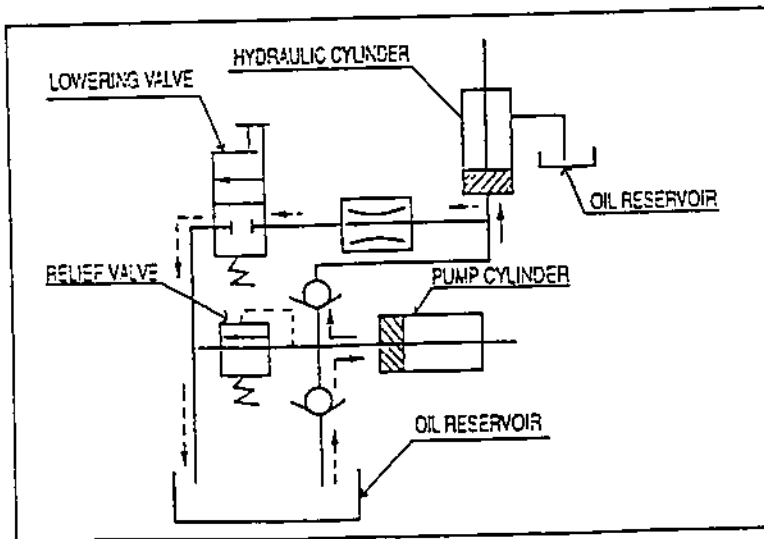
7-2. Change hydraulic oil every 12 months.

### Lubricating Points

- (1) Fitting of cylinder... Oil
- (2) Roller friction surface ... Grease
- (3) Link pin... Oil
- (4) Pedal fitting point ... Oil
- (5) Grease nipple ... Grease



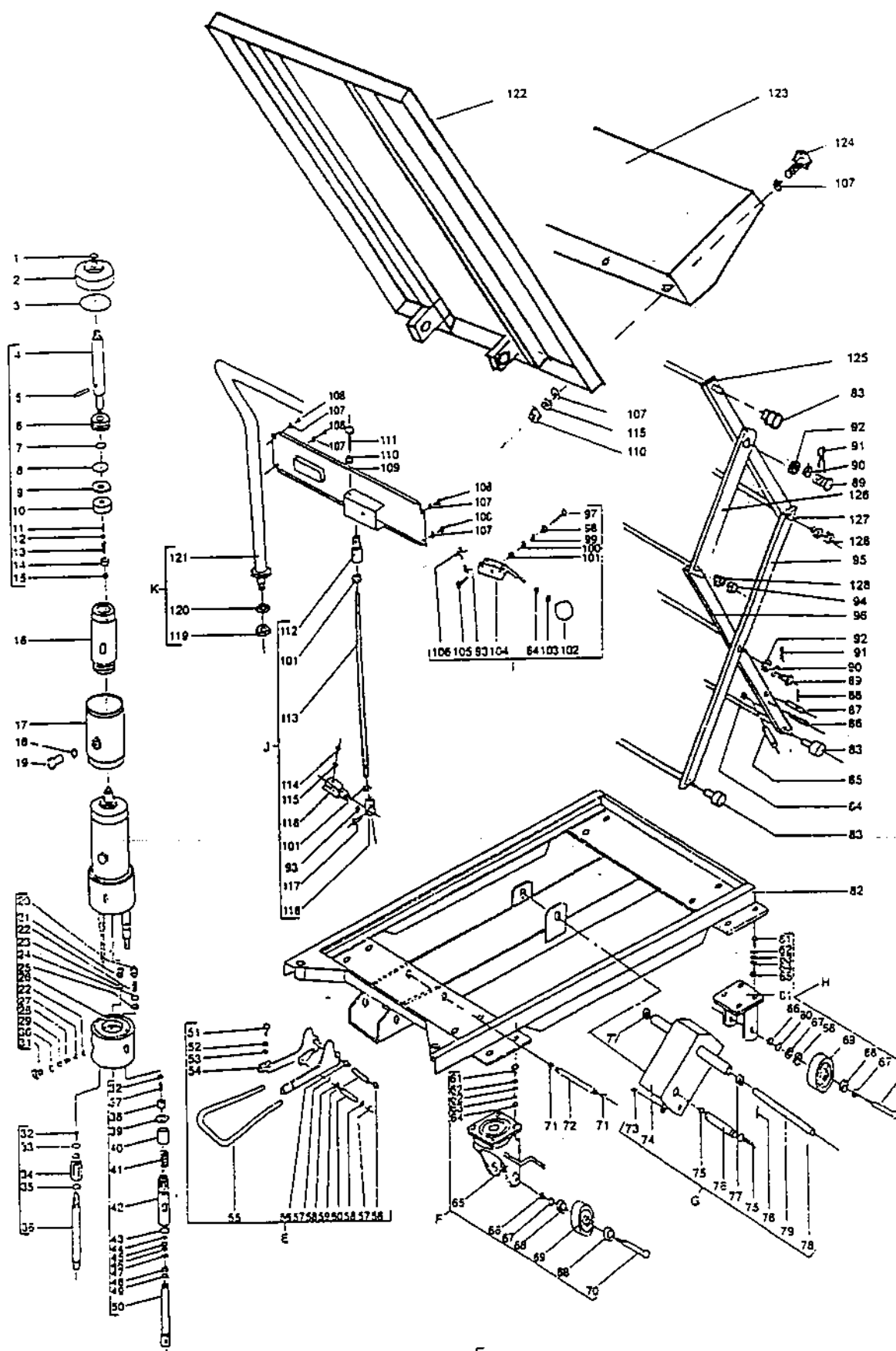
## 8. Hydraulic Circuit



LIFTING →

LOWERING →

SUCTION →



# Part List of Model CART-400-LT & CART-600-LT

No.	Description	Spec.	Pc/set	No.	Description	Spec.	Pc/set
1	O-ring	d35×3.5		65	Rack for rear wheel		
2	Cylinder cap			66	Nut	M12	
3	Sealing washer	φ 88		67	Washer	12	
4	Piston rod			68	Ball bearing		
5	Steel pin	6×40		69	Wheel		
6	Piston			70	Bolt	M12×80	
7	O-ring	d16×1.5		71	Restaining ring	28	
8	O-ring	d45×3.5		72	Pin spindle		
9	Sealing ring			73	Bolt	M8×10	
10	Buffer ring			74	Connecting rod		
11	Steel pin	3×20		75	Restaining rod	24	
12	Steel pin	6.35		76	Shaft		
13	Spring	d6.3×30		77	Ball bearing	60203	
14	Nut	M16×1.5		78	Elastin pin	3×25	
15	Screw	M8		79	Spindle		
16	Cylinder			80	Spring washer	10	
17	Tank			81	Rack for front wheel		
18	O-ring	d18×φ 2.4		82	Frame		
19	Oil plug			83	Pulley		
20	Damping ring			84	Nut	M10	
21	Screw	M8		85	Restricting pin		
22	Steel ball	6.5		86	Elastin pin	4×30	
23	Spring	d610		87	Pin spindle		
24	O-ring	d12×1.9		88	Elastin pin	4×30	
25	Nut	M3		89	Bolt	M16×54	
26	Cylinder			90	Washer	16	
27	Valve inside			91	Split pin	3	
28	Spring	d10×17		92	Slot Nut	M16	
29	Plug	M12×1.25		93	Split pin	2.6	
30	O-ring	d16×2.4		94	Guland nut	M16	
31	Plug			95	Scissors	II	
32	Steel ball	8		96	Scissors	I	
33	Wash			97	Bolt	M8×50	
34	Control valve body			98	Sleeve		
35	O-ring	d19×2.4		99	Washer	8	
36	Spindle			100	Sleeve		
37	Spring	d8.2×12		101	Nut	M8	
38	Spacer			102	Ball bonding of handle		
39	Nut	M16×1.5		103	Nut	M10	
40	Sleeve			104	Handle		
41	Spring	d36×105		105	Pin		
42	Pump body			106	Torsion spring		
43	O-ring	d20×2.4		107	Washer	6	
44	Nut	M6		108	Screw	M6×16	
45	Buffer ring			109	Pandle		
46	O-ring	d16×2.4		110	Nut	M6	
47	Sealing spacer	16		111	Bolt	M6×30	
48	Washer	6		112	Connecting rod		
49	Buffer ring	D16		113	Rod	M8×380	
50	Pump piston			114	Socket head cap screw	M6	
51	Bolt	M8×25		115	Spring washer	6	
52	Spring washer	8		116	Clevis pin	II	
53	Washer	8		117	Pin spindle		
54	Lifling crank			118	Clevis pin	I	
55	Pump hose			119	Nut	M20	
56	Restaining ring	14		120	Washer	20	
57	Split pin	2.5		121	Handle		
58	Washer	10		122	Table		
59	Shaft			123	Guard		
60	Shaft			124	Bolt	M6×20	
61	Bolt	M10×15		125	Inner scissor		
62	Washer	10		126	Outer short scissor		
63	Spring washer	10		127	Spindle of table		
64	Nut	M10		128	Nut	M16	

## LIMITED WARRANTY

Vestil Manufacturing Corporation ("Vestil") warrants this product to be free of defects in material and workmanship during the warranty period. *Our warranty obligation is to provide a replacement for a defective original part if the part is covered by the warranty, after we receive a proper request from the warrantee (you) for warranty service.*

### Who may request service?

Only a warrantee may request service. *You are a warrantee if* you purchased the product from Vestil or from an authorized distributor AND Vestil has been fully paid.

### What is an "original part"?

An original part is a part used to make the product as shipped to the warrantee.

### What is a "proper request"?

A request for warranty service is proper if Vestil receives: 1) a photocopy of the Customer Invoice that displays the shipping date; AND 2) a written request for warranty service including your name and phone number. Send requests by any of the following methods:

Mail  
Vestil Manufacturing Corporation  
2999 North Wayne Street, PO Box 507  
Angola, IN 46703

Fax  
(260) 665-1339  
Phone  
(260) 665-7586

Email  
sales@vestil.com

In the written request, list the parts believed to be defective and include the address where replacements should be delivered.

### What is covered under the warranty?

After Vestil receives your request for warranty service, an authorized representative will contact you to determine whether your claim is covered by the warranty. Before providing warranty service, Vestil may require you to send the entire product, or just the defective part or parts, to its facility in Angola, IN. The warranty covers defects in the following *original* dynamic components: motors, hydraulic pumps, electronic controllers, switches and cylinders. It also covers defects in *original* parts that wear under normal usage conditions ("wearing parts"): bearings, hoses, wheels, seals, brushes, batteries, and the battery charger.

### How long is the warranty period?

The warranty period for original components is 90 days. The warranty period begins on the date when Vestil ships the product to the warrantee. If the product was purchased from an authorized distributor, the period begins when the distributor ships the product. Vestil may extend the warranty period for products shipped from authorized distributors by *up to* 30 days to account for shipping time.

### If a defective part is covered by the warranty, what will Vestil do to correct the problem?

Vestil will provide an appropriate replacement for any *covered* part. An authorized representative of Vestil will contact you to discuss your claim.

### What is not covered by the warranty?

1. Labor;
2. Freight;
3. Occurrence of any of the following, which automatically voids the warranty:
  - Product misuse;
  - Negligent operation or repair;
  - Corrosion or use in corrosive environments;
  - Inadequate or improper maintenance;
  - Damage sustained during shipping;
  - Collisions or other incidental contacts causing damage to the product;
  - Unauthorized modifications: DO NOT modify the product IN ANY WAY without first receiving written authorization from Vestil. Modification(s) might make the product unsafe to use or might cause excessive and/or abnormal wear.

### Do any other warranties apply to the product?

Vestil Manufacturing Corp. makes no other express warranties. All implied warranties are disclaimed to the extent allowed by law. Any implied warranty not disclaimed is limited in scope to the terms of this Limited Warranty.

