



## Vertical Contact Bun Toasters

**Standard Length Feed Tray:** \_\_\_\_\_

**#184BT18A** 120V • 1600W

**#184BT18H** 208/240V • 2800/3200W

**Extended Length Feed Tray:** \_\_\_\_\_

**#184BT18AXL** 120V • 1600W

**#184BT18HXL** 208/240V • 2800/3200W

### Warning:

Improper installation, adjustment, alteration, service, or maintenance can cause property damage, injury, or death. Read the installation, operating, and maintenance Instructions thoroughly before installing or servicing this equipment.

### For Your Safety:

Do not store or use gasoline or other flammable vapors or liquids in the vicinity of this or any other appliance.

### Note:

Please read and keep these instructions. Indoor use only.

## Table of Contents

Safety Precautions .....	3
Upon Arrival .....	4
Installation .....	4
Operation .....	6
Cleaning & Maintenance .....	7
Troubleshooting .....	8

### #184BT18A & #184BT18AXL



### #184BT18H & #184BT18HXL




---

CONFORMS TO NSF/ANSI STD. 4  
CONFORMS TO UL STD. UL-197

## Safety Precautions



### WARNING

- Read all instructions carefully and completely.
- For commercial use only.
- DO NOT touch hot surfaces.
- Protect against electrical shock by keeping all cords, plugs, and other electrical components away from water or other liquids.
- Unplug this unit when not in use and before cleaning.
- Allow the unit to cool before putting on or taking off parts.
- DO NOT operate this or any appliance with a damaged electrical cord or plug.
- DO NOT operate this or any appliance after it has malfunctioned or has been damaged in any way.
- DO NOT use outdoors.
- DO NOT place on or near a hot gas or electric burner.
- Attach plug to appliance first, then plug electrical cord into the wall outlet.
- Disconnect the unit by removing the electrical plug from the wall outlet.
- DO NOT use appliance for any application other than intended use.
- DO NOT insert metal utensils or oversized foods into this unit, as they may cause a fire and increase the risk of electrical shock.
- DO NOT store any item on top of this unit when in operation.
- DO NOT allow this toaster to touch or to be covered by flammable material, such as curtains, draperies, walls, etc., when in operation.
- DO NOT clean with metal scouring pads, as pieces can break off and touch electrical components, increasing the risk of electrical shock.
- Never place materials such as paper, cardboard, plastic, etc. in this toaster.
- DO NOT cover interior of this unit with metal foil, as it may cause the toaster to overheat.
- Avoid scratching the surface or nicking the edges of this unit. If the toaster is damaged or broken, contact customer service before use.
- Turn off the appliance by removing the plug from the wall outlet.
- Note that the use of accessories not recommended by the manufacturer may result in injury.
- Children should be supervised to ensure that they DO NOT play with the toaster.
- This appliance is not intended for use by persons (including children) with reduced physical sensory or mental capabilities, or lack of experience and knowledge, unless a person responsible for their safety has given them supervision or instruction concerning use of the appliance.
- When using the appliance in shops, snack bars, hotels, etc., check the voltage and outlet to make sure the appliance is correctly connected with power.
- Place unit on a flat surface that is well ventilated.
- The appliance must be supervised during operation.
- DO NOT leave appliance without powering off.

## Upon Arrival

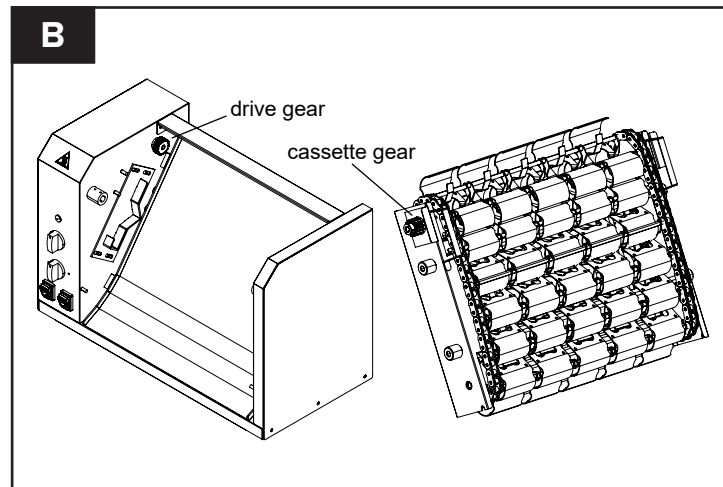
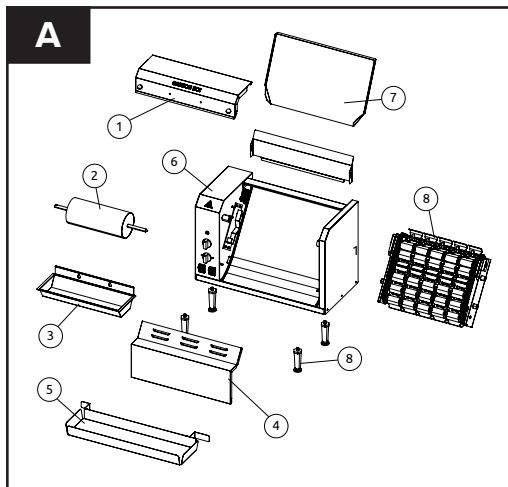
Examine carton for damage. The freight carrier has assumed responsibility for its safe transit and delivery. If equipment is received damaged, either apparent or concealed, a claim must be made with carrier.

- Apparent damage or loss must be noted on the freight bill at the time of delivery. The carrier representative (Driver) must sign the freight bill. If this is not done, the carrier may refuse the claim. The carrier can supply the necessary forms.
- Concealed damage or loss if not apparent until after the toaster is removed from the carton, a request for inspection must be made to the carrier within 15 days. The carrier should arrange an inspection. Be sure to save all contents and packaging material.

## Installation

### ASSEMBLY AND CONVEYOR

The feed tray, adjustable feet, and the conveyor cassette are packed separately in the box and need to be assembled to the unit as per the instructions below.



1. Lay the unit on its side and screw the adjustable feet into position using the threaded holes provided. Hand tighten the legs by gripping the steel shank and turning until it is seated firmly against the bottom of the toaster. Set the toaster upright on a flat and level surface. The unit can then be levelled using the adjustable part of the leg.

**NOTE:** The unit must not be used without the feet being in position.

2. Remove the butter roller (A2) by pushing the shaft to the right to disengage from the drive socket.
3. Remove the butter pan (A3) by lifting off the locating pins.
4. Remove the top panel (A1) using the two black knobs provided to lift up and slightly backwards.
5. The bottom panel (A4) can now be removed. Hold the top edge with one hand and pull straight back. Hold the bottom with the other hand and lift up and towards the front. Slide the panel down and out below the butter roller bushes.

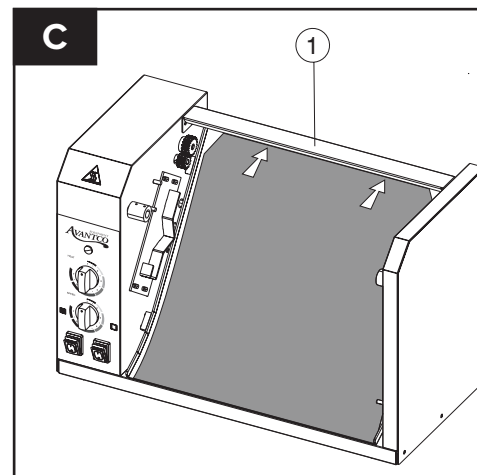
## Installation

**NOTE:** It is highly recommended that you install the non-stick sheet for best performance. Every unit is shipped with (10) non-stick sheets. Please contact customer service if you did not receive these sheets. If you do not install the non-stick sheet, there is a risk that buns will stick to the plate and burn. Built up residue and grease can cause poor performance and will be considered as operator negligence in a warranty claim, and thus void the warranty. To avoid this use non-stick sheet and clean unit frequently. See below for instructions on installing the non-stick sheet.

6. Install the cleaned conveyor cassette (A8). Refer to specific cleaning instructions (page 7) as follows. Grasp the conveyor cassette by the handles provided and place the locating pins into the adjustable hanger brackets. Push the conveyor cassette forwards gently to engage the drive gear (B). The cassette assembly height bolt is preset from the factory. If the cassette gear does not make adequate contact, or is binding with the drive gear, tighten or loosen the height bolt to ensure proper contact.  
**NOTE:** Care must be taken in fitting the conveyor cassette. The cassette is heavy and it is important that it is not dropped into place to avoid potential damage to the drive gears.
7. Replace the bottom panel (A4), the top panel (A1), the butter pan (A4) and the butter roller (A2) in that order.
8. Install the bun feeder chute by feeding the slots on each side onto the back panel studs.

### NON-STICK SHEET

1. Lay the non-stick sheet on a flat surface and measure approximately 2" from the end of the sheet. Notch the corners at 45 degrees as needed  
**NOTE:** Some non-stick sheets may already have notched corners) and fold a flap 2" long. Carefully crease the flap at the 2" fold.
2. Remove the bun feeder chute (A7). From the rear of the non-stick sheet retainer bracket (C1), slip the 2" fold under the bracket. Bring the balance of the sheet forwards and smooth the sheet down against the grill plate. See Diagram C.
3. Reinstall the feeder shoot.



## Operation

### GENERAL USE

1. Thoroughly clean the unit as described in the cleaning section of this manual.
2. Turn on the main switch. The conveyor will now run.
3. Set the temperature to approx. 400°F, which is between 6 and 7 on the scale. When using the recommended non-stick sheet, it is advisable to increase the temperature setting to approx. 450°F, which equates to 6.5 on the scale.

**NOTE:** Approximate temperatures by scale:

1: 85°F, 2: 140°F, 3: 200°F, 4: 285°F, 5: 350°F, 6: 410°F, 7: 480°F

4. Set the conveyor speed between 4 and 6 to start. The color of the bun is affected by the speed of the conveyor. The faster the conveyor, the lighter the color; the slower the conveyor, the darker the color. See diagram D.

5. Any high-quality edible oil can be used with this bun toaster. It is preferable to use oil specifically suited for use in toasters.

**NOTE:** Using too little oil will cause the bun surface to be cool and uneven in color. It will also cause the bun to stick to the grill. Using too much oil will give the bun a yellow un-toasted look.

The indicator light works with the heating element and indicates when the heater is on. It is referable to wait until the unit has reached operating temperature and the light has cycled on and off twice.

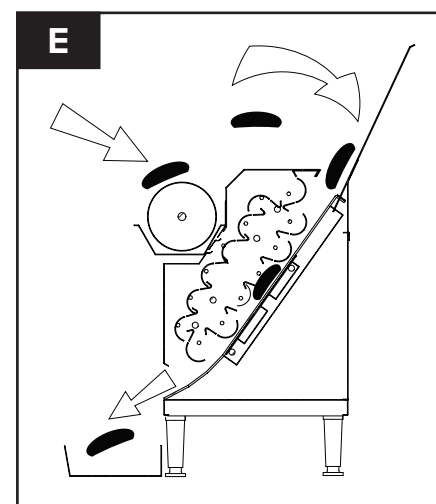
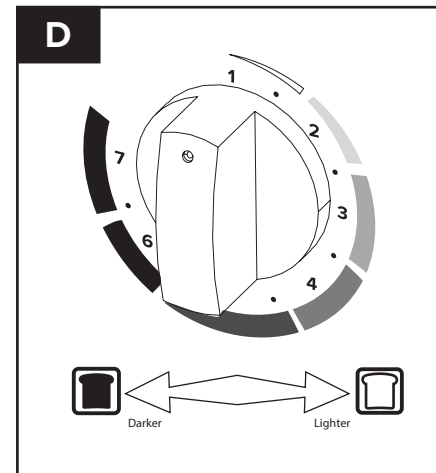
**NOTE:** Heat up time is about 15-20 min. for 208/240V, and about 20-30 min. for 120V.

**NOTE:** Try several buns to determine the correct pressure, temperature, and time to achieve the desired browning of bun.

6. Heat the toaster oil to melting point and carefully fill the butter tray 2/3 full. Turn on the butter roller using the switch provided.
7. Hold the bun half in the palm of the hand and in one motion slide the sliced side of the bun onto the butter roller. Drop the bun with the sliced surface towards the grill plate using the feeder chute provided. See diagram E.
8. The toasted bun will drop out into the receiving tray at the bottom of the unit.

**NOTE:** The toasted color of the bun can be adjusted lighter or darker by using the temperature control, the speed control, or a combination of both. When optimal bun color and speed have been achieved, it is recommended to take note of the settings for future reference.

**NOTE:** Should the temperature setting be changed, allow several cycles for the plate to adjust.

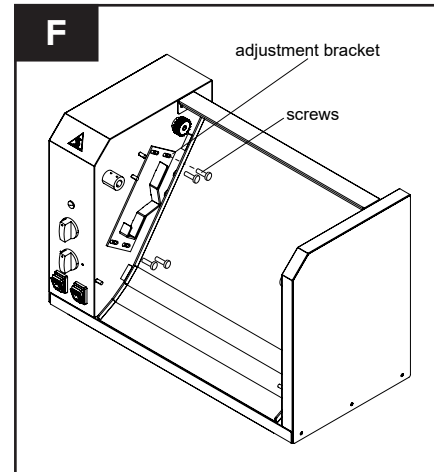


## Operation

### CONVEYOR ADJUSTMENT

If optimal bun grilling is not achieved using the speed and temperature settings, it is possible to adjust the position of the conveyor system relative to the grill plate. Moving the conveyor closer to the grill plate will apply more pressure to the bun and result in more effective toasting.

1. Switch off the unit and allow to cool down.
2. Remove the butter roller and tray and feed chute.
3. Remove the top panel and the bottom panel.
4. Remove the conveyor cassette carefully by lifting up and pulling towards the front  
**NOTE:** The conveyor is heavy and must be handled carefully.
5. The hanger adjustment brackets will now be exposed. Loosen the brackets and move them **EQUALLY** towards the grill plate in increments of 1/8". See diagram F.
6. Retighten the bracket screws.
7. Adjust the drive gear engagement as needed with the bolts at the bottom of the hanger plate. Ensure that the lock nuts are retightened.



## Cleaning & Maintenance

**CAUTION:** The unit must be disconnected from the power source and allowed to cool down before cleaning takes place.

1. All of the removable panels can be cleaned either in a sink with hot water and detergent or placed in a dishwasher.
2. It is recommended the conveyor cassette is only cleaned in a sink with regular detergent.
3. Make sure the chains are lubricated after cleaning with a suitable toaster oil.
4. The grill plate can be cleaned with a suitable grill plate scourer.

After drying, a light film of toaster oil should be applied.

**NOTE:** It is recommended that the non-stick sheet is replaced every 30 days, or when buns start sticking, whichever comes first.

**NOTE:** The conveyor must stay clean to optimize speed and bun temperature.

## Troubleshooting

Problem	Possible Causes	Action
Unit dead, no power.	No power at wall receptacle.	Check supply circuit breaker.
	Plug disconnected.	Check that plug is fully connected.
	Main switch off.	Check that the switch is on.
	Supply circuit breaker tripped.	Check circuit breaker and reset.
Unit not heating.	Faulty thermostat.	Replace thermostat.
	Faulty heating element.	Replace heating element.
	Loose wire connections.	Check wiring connections.
	Main switch off.	Check that the switch is on.
Conveyor and butter roller not working.	Loose wire connections.	Check wiring connections.
	Faulty main switch.	Replace main switch.
	Faulty butter roller switch.	Replace butter roller switch.
Butter roller not turning.	Section 3 possible causes.	Section 3 actions.
	Roller shaft incorrectly inserted into drive socket.	Check roller is properly engaged into drive socket.
	Faulty motor.	Check and replace motor.
Main conveyor not turning.	Section 3 possible causes.	Section 3 actions.
	Drive gears not engaging.	Reinstall conveyor.
	Conveyor linkage binding.	Check conveyor for bent or faulty links.
	Faulty speed control dial.	Replace speed control dial.
	Faulty conveyor cassette.	Replace conveyor cassette.
Buns toast unevenly.	Insufficient conveyor pressure.	Adjust conveyor as per instructions.
	Poor application of oil or butter.	Ensure even coating when using the butter roller.
	Poorly sliced buns.	Ensure bread is cut correctly.
Buns tend to stick to grill plate.	Non-stick sheet not being used.	Install and use the recommended non-stick sheet.
	Wrong oil used.	Ideally use toaster oil or coconut oil.
	Grill plate has baked-on oil residue.	Clean grill surface as per instructions.
	Doughy buns or excess sugar can cause sticking.	Consider using day old buns or increasing the grill temperature.
	Buns not properly defrosted.	Fully defrost buns before placing in machine.