

1 Bowl Juice Dispenser

Model: RDM-31

02/2022

Please read and keep these instructions. Indoor use only

TABLE OF CONTENTS

GENERAL INFORMATION	1
PARTS OVERVIEW & TECHNICAL DATA	3
OPERATING INSTRUCTIONS	4
CLEANING & MAINTENANCE	5
WIRING DIAGRAM	6
TROUBLESHOOTING	6

IMPORTANT SAFEGUARDS

1. When using electrical appliances, basic safety precautions should always be followed including the following:
2. Read all instructions
3. Close supervision is necessary when any appliance is used by or near children.
4. Make sure the appliance is OFF when not in use, before putting on of taking off parts, and before cleaning.
5. Do not operate any appliance with a damaged cord or plug or after the appliance malfunctions, or is dropped or damaged in any manner. Return appliance to the nearest authorized service facility for examination, repair or electrical or mechanical adjustment.
6. Do not use outdoors.

SAVE THESE INSTRUCTIONS

Useful instruction for transport

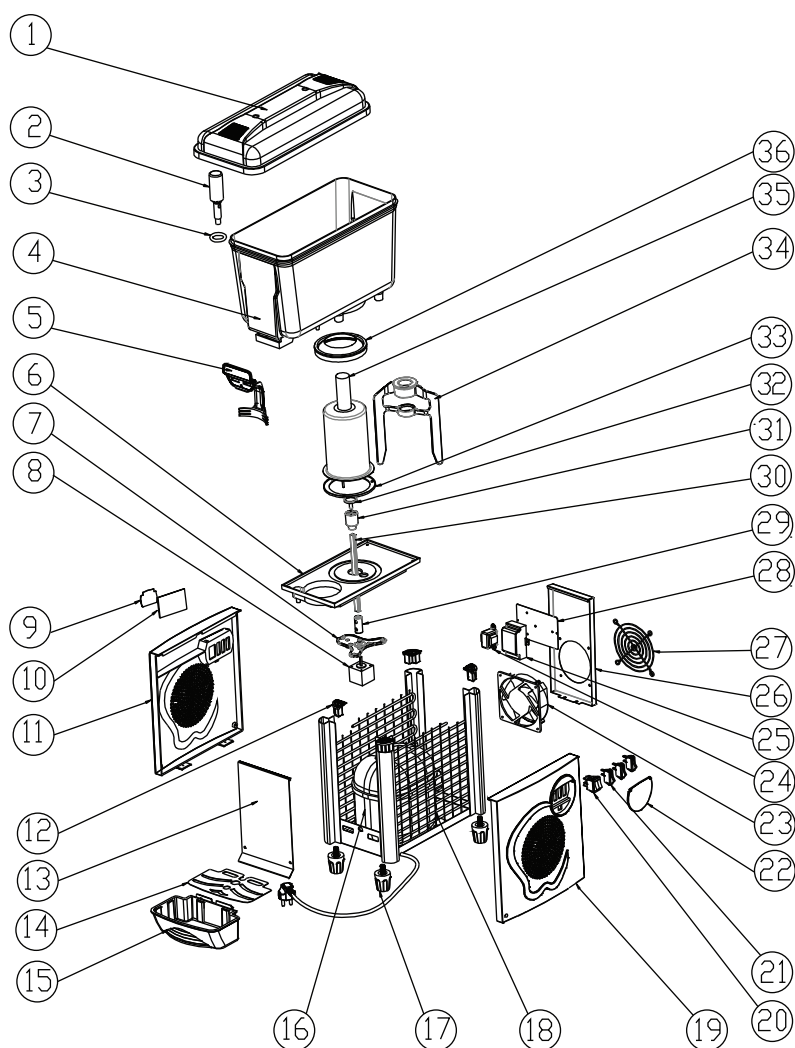
1. In order to prevent the oil contained in the hermetic compressor from flowing into the cooling circuit, it is necessary to always carry, store and handle the machine in a vertical position, following the instructions found on the packaging.
2. If the machine was accidentally or purposely placed in a non-vertical position during transport, before operating the machine, it should be kept in a straight position for approximately 30 minutes, to allow the oil to flow back into the compressor.

Unpacking: remove cardboard and plastic covering. Make sure that the machine has not been damaged. Remove plastic film from all stainless steel.

Important: The various packaging should be kept from children since they are potentially dangerous. Dispose the packaging according to the regulations from the local authorities.

PARTS OVERVIEW & TECHNICAL DATA

Model	Capacity	Voltage (V) (Hz)	Power (W)	Dimension (Inch)	Gas
RDM-31	1 x 3 Gal	120/60	260	7x18x25	R134a



1	Cover
2	Stainless steel valve
3	Tap gasket
4	Tank
5	Tap lever
6	Footstock
7	Motor mounting plate
8	Motor
9	Control panel sticker
10	Controller
11	ABS Side panel(Controller side)
12	Corner Plug
13	Front panel
14	Lid of water tray
15	Water tray
16	Compressor
17	Adjustable leg
18	Condenser
19	Switch side fan plate
20	Power switch SC767
21	Switch for mixing motor SC791
22	Cover for switches
23	Axial flow ventilator
24	Transformer
25	Main box
26	Back panel
27	Fan cover
28	Electrical panel
29	coupler
30	Aluminum shaft
31	Rotor
32	Rotor positioning plate
33	Washer of Evaporator
34	Paddle
35	Tank Evaporator
36	Gasket for bowl

OPERATING INSTRUCTIONS

Positioning

1. Do not install the appliance in the area where a water jet could be used.
2. Place machine on a horizontal and sturdy surface.
3. Please install the appliance in locations where it can be overseen by trained personnel.
4. For good ventilation, keep a distance of 7 inches, between unit and walls or other objects. Increase the distance if the obstacles are a heating source. When the dispenser is in place, adjust the legs in order to keep it level. (FIG.1)

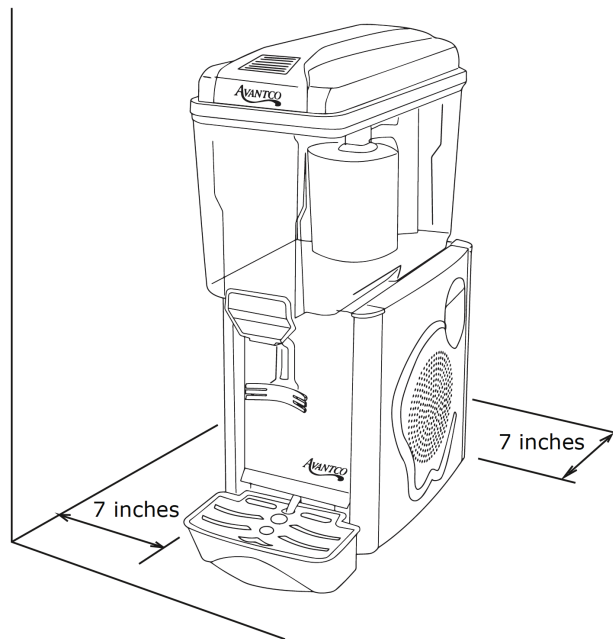


Fig. 1

Assembly

1. Remove the cover from the tank.
2. Hang the waste liquid container to hanging holes on front panel.
3. Insert the taps (with gasket) to the tank and through the tap lever.

Electrical Connection

Before inserting the plug into the electrical socket, carefully read the following precautions:

1. Make sure that the machine is properly connected to an efficient grounding system, in compliance with current safety standards.
2. Make sure that the voltage is in accordance with what is indicated on the "serial number" label on the chassis.
3. The current available is sufficient for the maximum required by the machine.
4. If necessary, use only approved multiple outlets, in compliance with current safety standards.

OPERATING INSTRUCTIONS

Observe

The appliance is suitable for an ambient temperature ranging between 16°C–32°C.

Cleaning

For health standard and good quality of beverages, clean tanks, lids, and the mixing paddles / pumps as often as possible.

Caution: Do not clean the appliance by water jet.

1. Before carrying out cleaning and refilling, remove the power plug.
2. Do not use abrasive powders that might impair the tanks and lid's polished glossy finish.
3. Use neutral soap and a little warm water in order to remove any soap residue.
4. To maintain a high standard of flavor, leave the dispenser turned on night and day in order to avoid deposits forming.
5. Pour out the waste water in waste liquid reservoir and clean it as often as possible.

Caution:

Do not use any organic solvents (petrol, alcohol, etc.) for cleaning the appliance. The case of the appliance may be damaged and explosive vapors may develop. Do not use any sharp edged objects for cleaning.

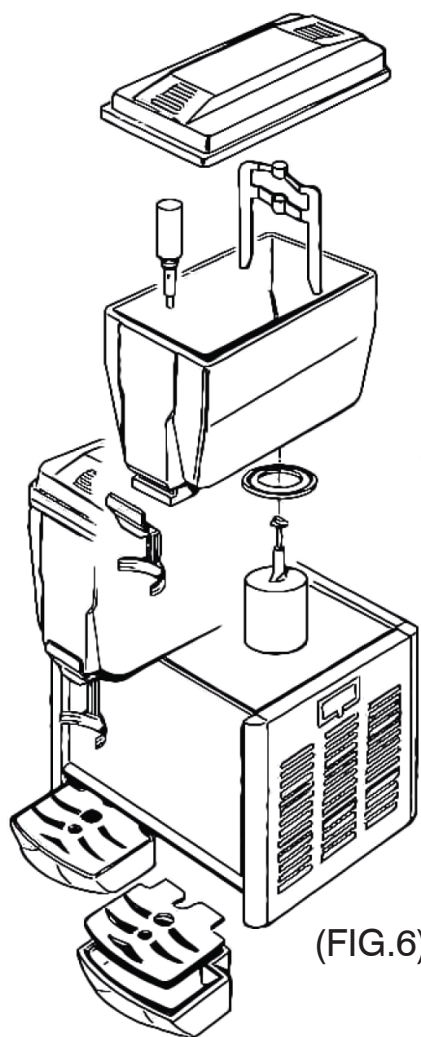
The appliance may be cleaned with a damp towel, but may never be immersed in water. After cleaning the appliance make sure that it will be dried completely.

CLEANING & MAINTENANCE

Disassembling and Assembling the tank:

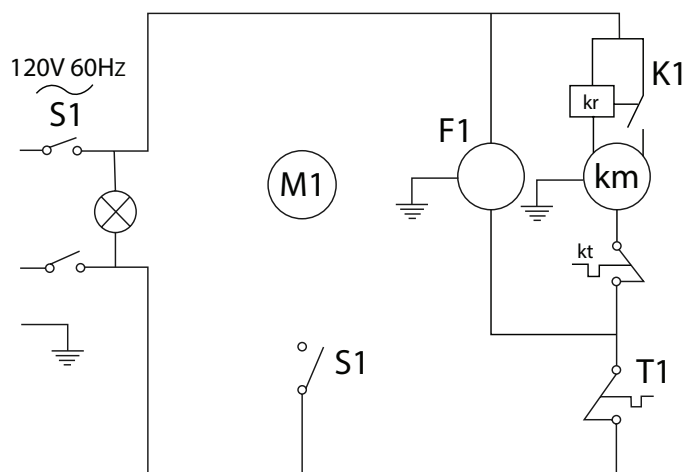
To disassemble and assemble the tanks or to change the rubber tank gaskets.

1. Disconnect the unit by removing the plug.
2. Remove the cover from the tank.
3. Remove the mixing paddle from its shaft.
For the pump disassembling follow the instructions reported on the diagram (FIG.6)
4. Lift container with both hands by a light, swinging motion. If there is difficulty, please wet the cooling column and gasket.
5. To remove tap, lift it from it's setting.
6. Change the gasket for tanks and taps only with the genuine gaskets that are supplied by an authorized supplier.
To reassemble the unit, repeat the above operations in reverse.

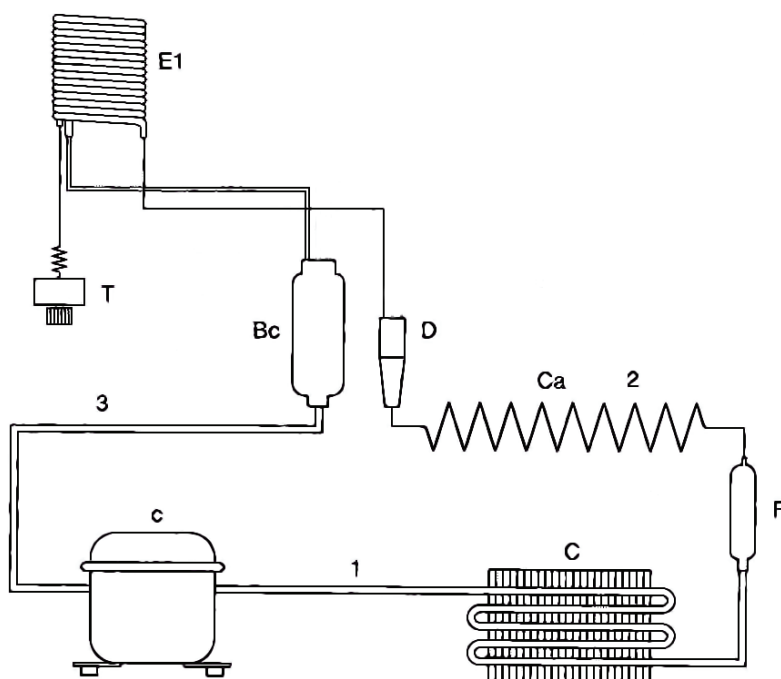


WIRING DIAGRAM

Item	Description
S1	Main Switch
M1	Mixer / Pump motor
S2	Switch
F1	Fan
T1	Thermostat
K1	Compressor
Kr	Relay
Km	Electric Motor
Kt	Thermal Protector



Item	Description
c	Compressor
C	Condenser
F	Filter
Bc	Boiler
E1	Evaporator
D	Distributor
Ca	Capillary coils
1	High Pressure Side
2	Liquid Line
3	Low Pressure Side
T	Thermostat



TROUBLESHOOTING

PROBLEM	CAUSE	SOLUTION
No power to machine	Plug is not in	Insert plug into main socket
	Main switch is not on the "I" position	Switch main switch to "I" position
	Power cord is broken	Replace power cord
	The Main Switch is broken	Replace main switch
Machine is not cooling	Compressor does not start	See "Compressor does not start" section
	Gas leak into the cooling circuit	Find leak, filter it out & re-charge cooling circuit
	Condenser is clogged	Clean the condenser
	Fan motor is burnt out	Replace the fan motor
	Lack of air flow	Increase the distance between the machine and other obstacles/heating sources
Compressor does not start	Main switch is broken	Replace main switch
	Compressor protector is broken	Replace compressor protector
	Compressor relay is broken	Replace compressor relay
	Compressor motor is broken	Replace motor
One tank is not cooling	Gas leak into the cooling circuit	Find leak, filter it out & re-charge cooling circuit
	Condenser is clogged	Clean the condenser
	Lack of air flow	Increase the distance between the machine and other obstacles/heating sources (see Fig. 2)
	Tube of the cooling circuit is clogged	Cut the tube, eliminate clog, re-charge the cooling circuit
	Filter is clogged	Replace the filter
The mixing paddles are not working	Mixer motor is broken	Replace the mixing motor