



## Refrigerated Beverage Dispensers

**Models:** RBD31, RBD32, RBD33

02/2022

***Please read and keep these instructions. Indoor use only.***

## Index

General Information .....	3
Parts Overview & Technical Data .....	4
Operating Instructions.....	5-6
Cleaning and Maintenance .....	7-8
Wiring Diagram .....	9
Troubleshooting .....	10

## Important Safeguards

When using electrical appliances, basic safety precautions should always be followed including the following:

1. Read all instructions
2. Close supervision is necessary when any appliance is used by or near children.
3. Make sure the appliance is OFF when not in use, before putting on or taking off parts, and before cleaning.
4. Do not operate any appliance with a damaged cord or plug or after the appliance malfunctions, or is dropped or damaged in any manner. Return appliance to the nearest authorized service facility for examination, repair or electrical or mechanical adjustment.
5. Do not use outdoors.

## SAVE THESE INSTRUCTIONS

### Useful instruction for transport

1. In order to prevent the oil contained in the hermetic compressor from flowing into the cooling circuit, it is necessary to always carry, store and handle the machine in a vertical position, following the instructions found on the packaging.
2. If the machine was accidentally or purposely placed in a non-vertical position during transport, before operating the machine, it should be kept in a straight position for approximately 30 minutes, to allow the oil to flow back into the compressor.

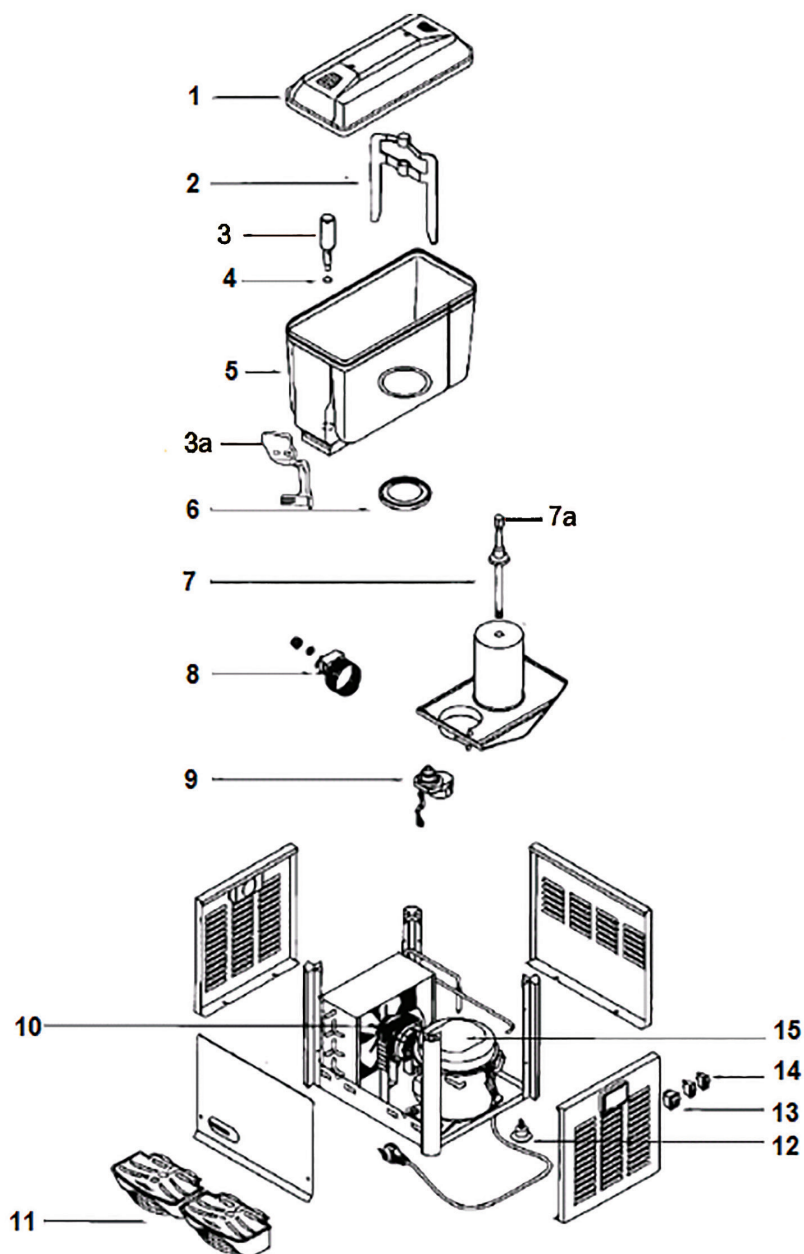
**Unpacking:** Remove cardboard and plastic covering. Make sure that the machine has not been damaged. Remove the plastic film from all the stainless steel panels.

**Important:** The various packaging should be kept from Children since they are potentially dangerous. Dispose the Packaging according to the regulations from the local authorities.

# User Manual

## Parts Overview & Technical data

Model	Capacity	Voltage (V) (HZ)	Power (W)	Dimensions (Inch)	Gas
RBD31	1 X 3 Gal	120/60	260	7x18x25	R134a
RBD32	2 X 3 Gal	120/60	265	17x18x25	R134a
RBD33	2 X 3 Gal	120/60	272	24x18x25	R134a



### Parts Key

Parts Diagram #	Part Name	Replacement Part Item #
1	Replacement Lid	177PRBD1
2	Paddle	177PRBD2
3	Stainless Steel Valve	177PRBD4
3a	Handle	177PRBD6
4	Tap Valve O-Ring	177PRBD31
5	Bowl	177PRBD5
6	Bowl Gasket	177PRBD30
7	Stir Rod Pipe	177PRBD33
7a	Stir Rod with Plastic Cap	177PRBDSROD
8		177PRBD9
9	Motor	177PRBDMOTOR
10	Axial Fan	177PRBD26
11	Drip Tray	177PRBD1314
12	Foot	
13	Power Switch	
14	Switch for Mixing Motor	
15	Compressor	
Not Shown	Condenser Coil	177PRBD11 (RDB31) 177PRBD202 (RBD32) 177PRBD203 (RBD33)

## Operating Instructions

### Positioning

1. Do not install the appliance in the area where a water jet could be used.
2. Place machine on a horizontal and sturdy surface.
3. Please install the appliance in locations where it can be overseen by trained personnel.
4. For good ventilation, keep a distance of 7 inches, between unit and walls or other objects. Increase the distance if the obstacles are a heating source. When the dispenser is in place, adjust the legs in order to keep it level. (FIG.1)

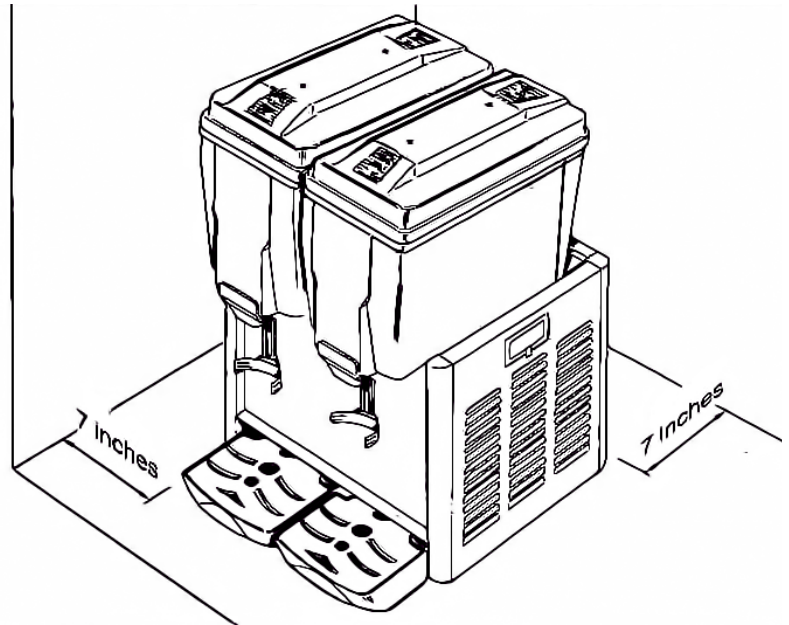


Fig. 1

### Assembling

1. Remove the cover from the tank.
2. Hang the waste liquid container by hanging holes on front panel.
3. Insert the taps (with gasket) to the tank and through the tap lever.

### Electrical Connection

Before inserting the plug into the electrical socket, carefully read the following precautions:

1. Make sure that the machine is properly connected to an efficient grounding system, in compliance with current safety standards.
2. Make sure that the voltage is in accordance with what indicated on the "serial number" label applied on the chassis.
3. The current available is sufficient for the maximum required by the machine.
4. If necessary, use only approved multiple outlets, in compliance with current safety standards.

If in doubt, consult only specialized technicians.

**By law, the machine must always be grounded.**

## Operating Instructions

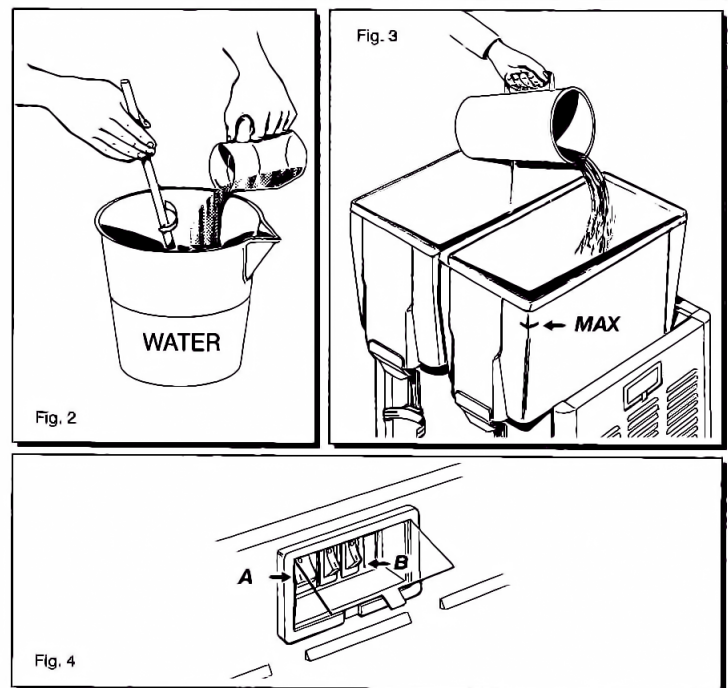
### How To Use:

Before using, the tanks and taps of the appliance should be cleaned carefully.

### Filling

To ensure correct usage of the machine ensure that the liquid level of the tank does not go below 3-4 Qt (please use the level lines on the tank for reference).

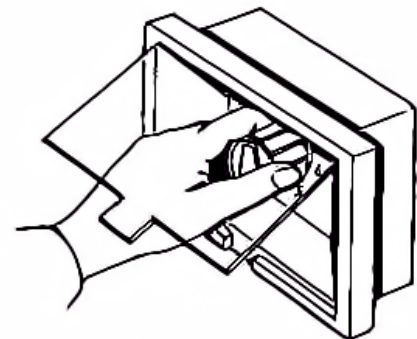
1. Mix product in a separate container (FIG. 2).
2. Make sure to unplug the appliance before filling up the container.
3. Do not fill the container with hot product.
4. Do not let liquid level exceed the "MAX" level line (FIG. 3).



### Beverage Temperature Adjustment (FIG.5)

To adjust the temperature of liquid, lift up the plastic cover on left side of appliance then turn the temperature control knob to set the temperature. Lower down the temperature by turning the knob clockwise (lower figure), and increase temperature by turning it anticlockwise (higher figure). Note: The numbers beside the control knob do not indicate the actual temperature of the liquid.

**CAUTION:** Resetting the temperature controller frequently is not recommended.



## Cleaning and Maintenance

### Observe the Ambient Temperature

The appliance is suitable for an ambient temperature ranging between 16°C - 32°C.

### Cleaning

For health standard and good quality of beverages, clean tanks, lids and the mixing paddles / pumps as often as possible.

**Caution:** Do not clean the appliance by water jet.

1. Before carrying out cleaning and refilling, remove the power plug.
2. Do not use abrasive powders that might impair the tanks and lid's polished glossy finish.
3. Use neutral soap and a little warm water to wash container, lid, mixing paddles/pump, refrigerator tank and tap. Rinse carefully with water in order to remove any soap residue.
4. To maintain a high standard of flavor, leave the dispenser turned on night and day in order to avoid deposits forming.
5. Pour out the waste water in waste liquid reservoir and clean it as often as possible.

### Caution:

Do not use any organic solvents (petrol, alcohol, etc.) for cleaning the appliance. The case of the appliance may be damaged and explosive vapours may develop. Do not use any sharp edged objects for cleaning.

The appliance may be cleaned with a damp towel, but may never be immersed in water. After cleaning the appliance make sure that it will be dried completely.



## Cleaning and Maintenance

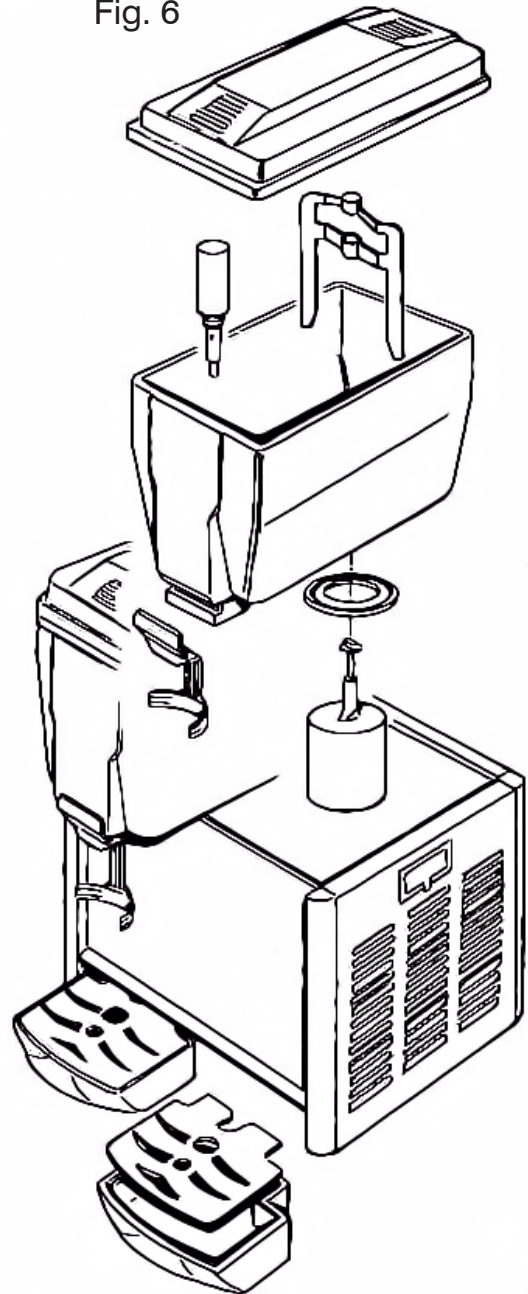
### Disassembling and Assembling the Tanks:

To disassemble and assemble the tanks or to change the rubber tank gaskets :

1. Disconnect the unit by removing the plug.
2. Remove the cover from the tank.
3. Remove the mixing paddle from its shaft. For the pump disassembling follow the instructions reported on the diagram (Fig.6).
4. Lift container with both hands by a light, swinging motion. If there is difficulty, please wet the cooling column and gasket.
5. To remove tap, lift it from its setting.
6. Change the gaskets for tanks and taps only with the genuine gaskets that are supplied by an authorized supplier.

To reassemble the unit, repeat the above operations in reverse.

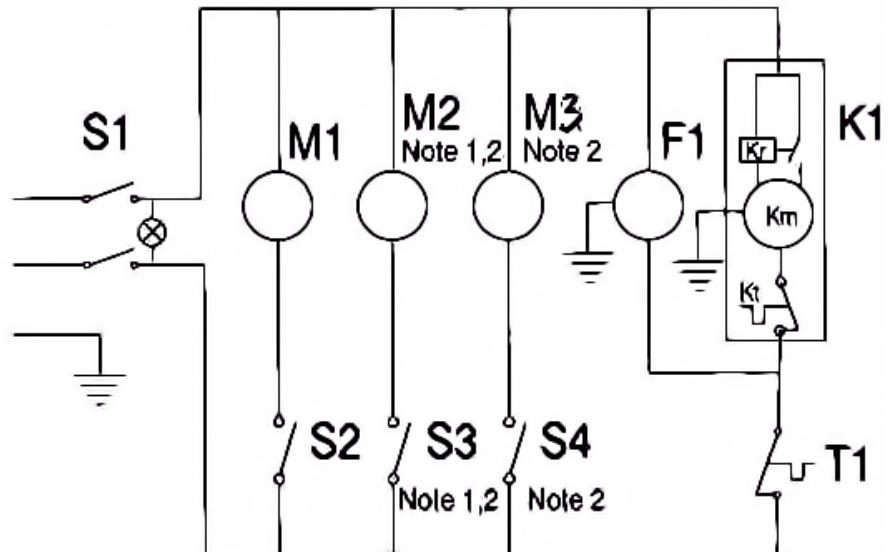
Fig. 6





## Wiring Diagram

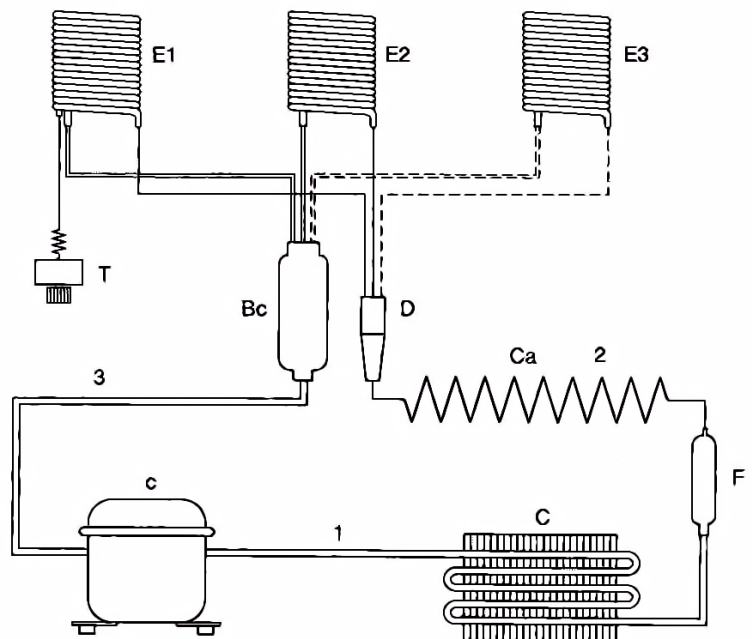
Item	Description
S1	Main Switch
M1	Mixer / Pump motor
S2	Switch
M2 (see note 1, 2)	Mixer / Pump motor
S3 (see note 2)	Switch
M3 (see note 2)	Mixer / Pump motor
S4 (see note 2)	Switch
F1	Fan
T1	Thermostat
K1	Compressor
Kr	Relay
Km	Electric Motor
Kt	Thermal Protector



Note 1 = Only for model RBD-32

Note 2 = Only for model RBD-33

Item	Description
c	Compressor
C	Condenser
F	Filter
Bc	Boiler
E1	Evaporator
E2	Evaporator
E3	Evaporator
D	Distributer
Ca	Capillary coils
1	High Pressure Side
2	Liquid Line
3	Low Pressure
T	Thermostat



## Troubleshooting

Trouble	Possible causes	Solution	
No power to machine	• Plug is not in.	• Insert plug into mains socket	Ask for authorized service department to check and repair it.
	• Main switch is not on the "I" position.	• Switch main switch to "I" position.	
	• Power cord is broken.	• Replace power cord	
	• Main switch is broken.	• Replace main switch	
Machine is not cooling	• Compressor does not start	• See "compressor does not start" section.	Ask for authorized service department to check and repair it.
	• Gas leak into the cooling circuit.	• Find leak, filter it out and re-charge the cooling circuit	
	• Condenser is clogged.	• Clean the condenser	
	• Fan motor is burnt.	• Replace fan motor	
	• Lack of air flow	• Increase distance between the machine and other obstacles / heating sources	
Compressor does not start	• Main switch is broken	• Replace main switch	Ask for authorized service department to check and repair it.
	• Compressor protector is broken.	• Replace compressor protector	
	• Compressor relay is broken	• Replace compressor relay	
	• Compressor motor is broken	• Replace motor	
One tank is not cooling	• Gas leak into the cooling circuit	• Find leak, filter it out and re-charge the cooling circuit	
	• Condenser is clogged	• Clean the condenser	
	• Lack of air flow	• Increase distance between the machine and other obstacles / heating sources	
	• Tube of the cooling circuit is clogged.	• Cut the tube, eliminate clog, re-charge the cooling circuit	
	• Filter is clogged	• Replace the filter	
The mixing paddles are not working	• The mixing motor is broken	• Replace the mixing motor	