



Flexible Heat Lamps

Models: 177HL24BK, 177HL24GD, 177HL24SS, 177HL39BK, 177HL39GD, 177HL39SS, 177HLDBL24BK, 177HLDBL24GD, 177HLDBL24SS, 177HLD24SSC, 177HLD24BKC, 177HL24SSC, 177HL24BKC, 177HLD24GDC, 177HL39GDC, 177HL39SSC, 177HL24GDC, 177HL39BKC

02/2024

Please read and keep these instructions. Indoor use only.

Index

Introduction, Requirements, and Safety 3

Preparation and Installation 4

Operation and Cleaning..... 5

Troubleshooting 5

Item List 6

Parts Diagram7 - 10

Introduction, Requirements, and Safety

Introduction

1. Please read instructions before using this appliance. This appliance is for commercial use only.
2. When using electrical appliances, basic precautions should always be followed to reduce the risk of fire, electric shock, and injury.
3. Clean machine thoroughly before and after each use following the cleaning instructions provided below.

Electrical Requirements

1. Plug heat lamp into a grounded outlet with correct voltage (120V) and sufficient power capacity (250W for single model, 500W for double model).

Safety Instructions



WARNING!

All power must be disconnected at power source before any service procedure is performed.

1. This appliance is hot when in use. To avoid burns, do not let bare skin touch hot surfaces. Keep combustible materials, such as drapes and other furnishings, away from appliance.
2. Extreme caution is necessary when any appliance is used by or near children and whenever the appliance is left unattended.
3. Always unplug appliance when not in use and before cleaning, adjusting, or maintaining this machine. To disconnect appliance, turn controls off and remove plug from outlet.
4. Do not operate any appliance with a damaged cord or plug, after the appliance malfunctions, or has been dropped or damaged. Return appliance to an authorized service facility for examination, or electrical or mechanical adjustment, or repair.
5. Do not use outdoors. This appliance is not intended for wet or moist locations. Never locate appliance where it may fall into water.
6. Connect to properly grounded outlets only. Avoid the use of extension cords. Do not run the power cord under carpeting, runners, or the like. Arrange cord away from high traffic area and where it will not create a tripping hazard.
7. To prevent a possible fire, it is recommended that the unit is placed on a non-combustible surface.
8. This appliance has electrical parts. Do not use it in areas where gasoline, paint, or flammable liquids are used or stored.

Preparation, Installation Without Clamp, Operation, and Cleaning

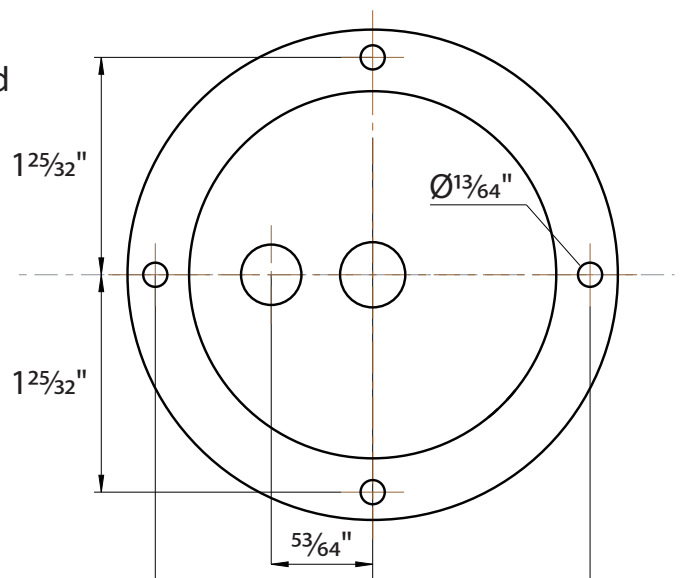
Preparation

1. For models with a clamp, secure clamp assembly to counter or table.
2. Slide heat lamp onto clamp assembly and tighten thumb screw to secure heat lamp to clamp assembly.
3. Position heat lamp near the power outlet, at least 12" away from a back wall (side wall, warming surface, or other surface).
4. If warmer fails to work properly when first operated contact Avantco customer service.

Installation Without Clamp

1. For models without a clamp, take the non-slip drill template that's attached to the bottom of the lamp and follow steps 2-5.
2. Position the non-slip drill template on the wood cutting board (or another solid surface).
3. Using the non-slip drill template, mark where you want to drill your lamp and predrill your holes using a 1/16" drill bit.
4. Line up the lamp bottom with your non-slip drill template.
5. Keeping your non-slip drill template under the lamp bottom, secure the lamp into the predrilled holes using the included bolts (4) or wood screws (4).

*NOTE: The non-slip drill template is an anti-skid and slip-resistant feature that helps protect your table surface and product.



Operation

1. Plug cord into a grounded outlet.
2. Place food products in a pan located directly under the bulb for best results.
3. Adjust flexible stem assembly. Do not aim lamp in any direction other than the surface of the table on which the appliance is mounted. Maintain a distance of at least 13" between lamp and surface of table. Always maintain a distance of at least 12" between the installed hood and any wall.
4. Turn heat lamp off when not in use.
5. Unplug the heat lamp before changing bulb. To disconnect heat lamp, turn switch to off and remove plug from power source.

Cleaning

NOTE: Proper maintenance plays an important part in the life span and functioning of the heat lamp.

1. Turn heat lamp off and unplug the cord before cleaning.
2. Clean heat lamp with a damp sponge and mild soap. Do not immerse in water or other liquid.

Troubleshooting

Lights Not On	Check if unit is plugged in and power switch turned to "ON" position.
	Check power at receptacle.
	Check if bulb has blown.
Loose Sockets	Turn off power and check if socket is loose or broken. Remove light bulb and tighten socket screws as necessary.
Loose Hoods	Turn off power and check if hood is loose. Remove light bulb and tighten hoods screws as necessary.
Unit Blows Fuse or Circuit Breaker	Check to make sure circuit is not overloaded.

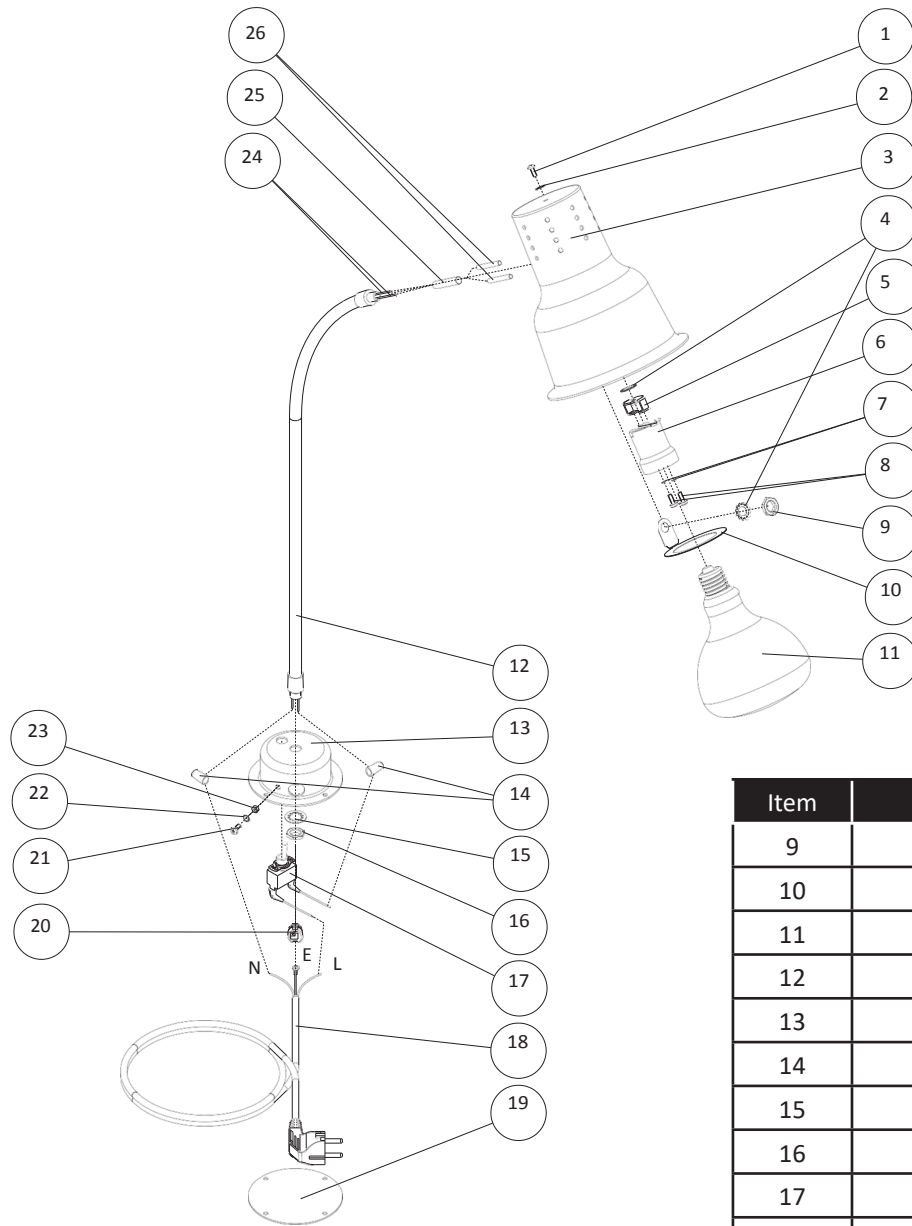
Accessories Available at Extra Cost

Item Number	Part Description
177PCLMPSS	Stainless Steel Clamp
566250R40TCL	Lavex 250 Watt Coated Infrared Heat Lamp Bulb
566250R40CL	Lavex 250 Watt Infrared Heat Lamp Light Bulb
566250R40TRD	Lavex 250 Watt Red Coated Infrared Heat Lamp Light Bulb
566250R40RD	Lavex 250 Watt Red Infrared Heat Lamp Light Bulb

Item List

Model	Height	Material/Finish	Item#	Accessories
Single Bulb without Clamp	24"	Stainless Steel	177HL24SS	N/A
	24"	Stainless Steel with Black Finish	177HL24BK	
	24"	Stainless Steel with Gold Finish	177HL24GD	
	39"	Stainless Steel	177HL39SS	
	39"	Stainless Steel with Black Finish	177HL39BK	
	39"	Stainless Steel with Gold Finish	177HL39GD	
Single Bulb with Clamp	24"	Stainless Steel	177HL24SSC	with Clamp
	24"	Stainless Steel with Black Finish	177HL24BKC	
	24"	Stainless Steel with Gold Finish	177HL24GDC	
	39"	Stainless Steel	177HL39SSC	
	39"	Stainless Steel with Black Finish	177HL39BKC	
	39"	Stainless Steel with Gold Finish	177HL39GDC	
Double Bulb without Clamp	24"	Stainless Steel	177HLDBL24SS	N/A
	24"	Stainless Steel with Black Finish	177HLDBL24BK	
	24"	Stainless Steel with Gold Finish	177HLDBL24GD	
Double Bulb with Clamp	24"	Stainless Steel	177HLD24SSC	with Clamp
	24"	Stainless Steel with Black Finish	177HLD24BKC	
	24"	Stainless Steel with Gold Finish	177HLD24GDC	
Carving Kits	24"	Stainless Steel	177CST24SS	Includes (1) 16" x 24" x 1" 3/4" cutting board and a full size drip pan
	24"	Stainless Steel with Black Finish	177CST24BK	
	24"	Stainless Steel with Gold Finish	177CST24GD	
	39"	Stainless Steel	177CST39SS	
	39"	Stainless Steel with Black Finish	177CST39BK	
	39"	Stainless Steel with Gold Finish	177CST39GD	
	24"	Double Stainless Steel	177CST24DSS	
	24"	Double Stainless Steel with Black Finish	177CST24DBK	
	24"	Double Stainless Steel with Gold Finish	177CST24DGD	

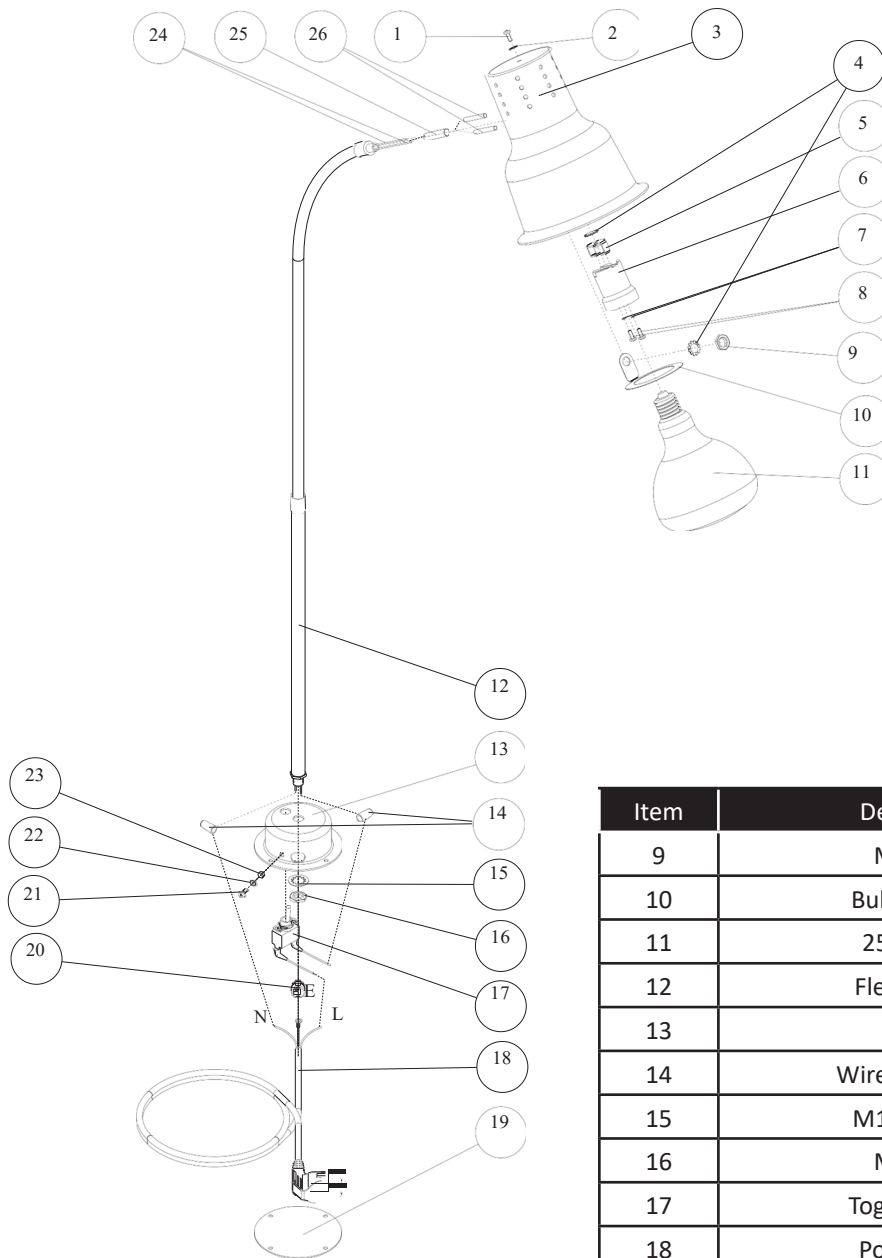
Parts Diagram 24" Single Arm Heat Lamp Exploded View



Item	Description	Quantity
1	M5 Screw	1
2	M5 Washer	1
3	Shade	1
4	M10 Washer	2
5-6	Socket	1
7	M3 Spring Ring	2
8	M3 Screw	2

Item	Description	Quantity
9	M10 Nut	1
10	Bulb Support	1
11	250W Bulb	1
12	Flexible Arm	1
13	Base	1
14	Wire Connector	2
15	M12 Washer	1
16	M12 Nut	1
17	Toggle Switch	1
18	Power Cord	1
19	Rubber Pad	1
20	Strain Relief Bushing	1
21	M4 Screw	1
22	M4 Washer	1
23	M4 Nut	1
24	Wire	2
25	#7 Sleeving	1
26	#4 Sleeving	2

Parts Diagram 39" Single Arm Heat Lamp Exploded View

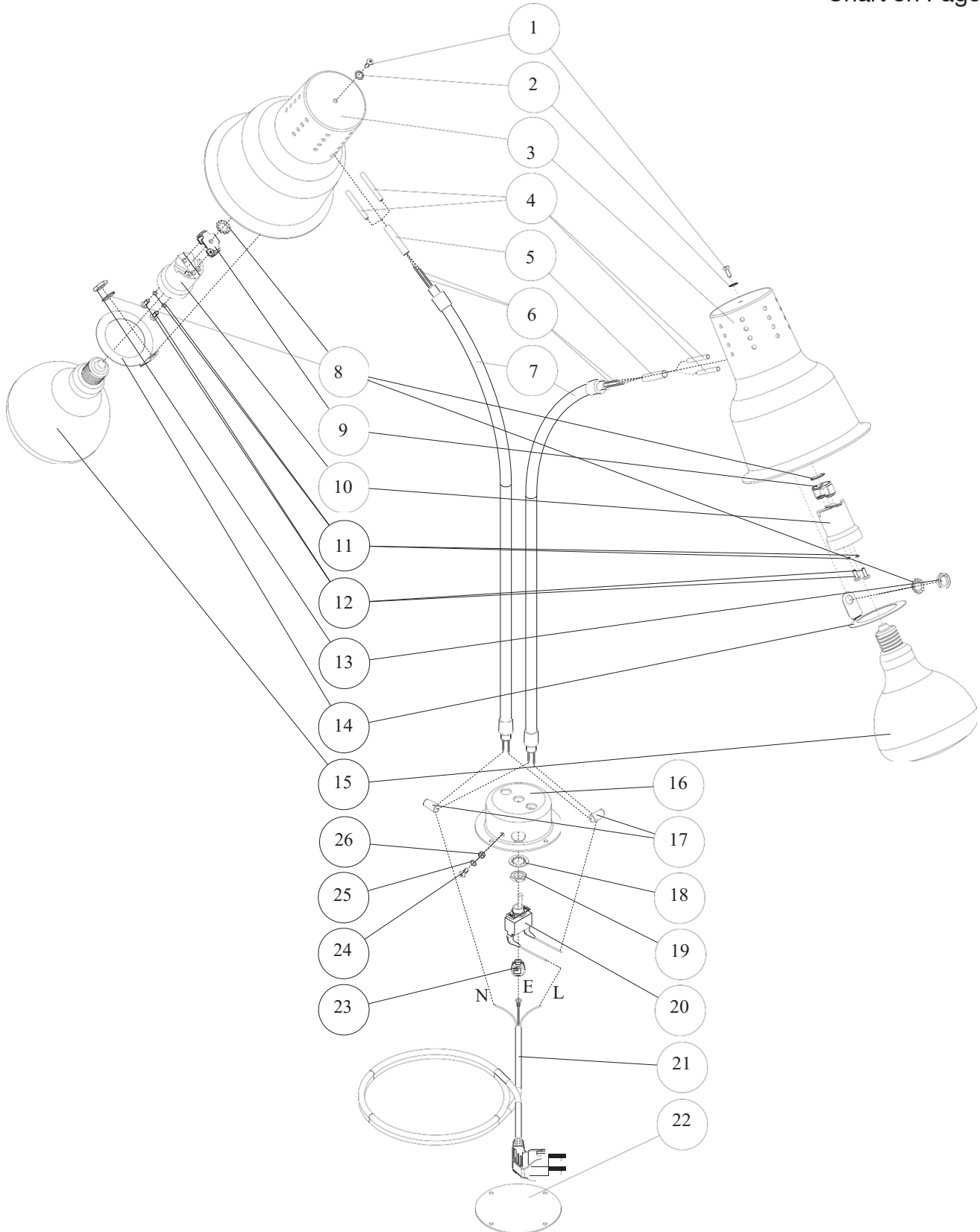


Item	Description	Quantity
1	M5 Screw	1
2	M5 Washer	1
3	Shade	1
4	M10 Washer	2
5-6	Socket	1
7	M3 Spring Ring	2
8	M3 Screw	2

Item	Description	Quantity
9	M10 Nut	1
10	Bulb Support	1
11	250W Bulb	1
12	Flexible Arm	1
13	Base	1
14	Wire Connector	2
15	M12 Washer	1
16	M12 Nut	1
17	Toggle Switch	1
18	Power Cord	1
19	Rubber Pad	1
20	Strain Relief Bushing	1
21	M4 Screw	1
22	M4 Washer	1
23	M4 Nut	1
24	Wire	2
25	#7 Sleeving	1
26	#4 Sleeving	2

Parts Diagram 24" Double Arm Heat Lamp Exploded View

*Chart on Page 10



Parts Diagram 24" Double Arm Heat Lamp Exploded View

Item	Description	Quantity
1	M5 Screw	2
2	M5 Washer	2
3	Shade	2
4	#4 Sleeving	4
5	#7 Sleeving	2
6	Wire	4
7	Flexible Arm	2
8	M10 Washer	4
9-10	Socket	2
11	M3 Spring Ring	4
12	M3 Screw	4
13	M10 Nut	2
14	Bulb Support	2
15	250W Bulb	2
16	Base	1
17	Wire Connector	2
18	M12 Washer	1
19	M12 Nut	1
20	Toggle Switch	1
21	Power Cord	1
22	Rubber Pad	1
23	Strain Relief Bushing	1
24	M4 Screw	1
25	M4 Washer	1
26	M4 Nut	1