

ADCRAFT®



CK-2 Snack Oven

This manual contains important information regarding your *Admiral Craft* unit. Please read this manual thoroughly prior to equipment set-up, operation and maintenance. Failure to comply with regular maintenance guidelines outlined in this manual may void the warranty. MUST READ!!!

WARNINGS

- Do not touch any hot surfaces
- Do not cook oversized foods
- Do not store items on top of the unit
- Do not stack ovens
- Do not cook greasy foods that may cause damage to the coils
- Plug only into a 3-hole grounded electrical outlet
- Do not plug or unplug unit with wet hands
- Do not immerse unit, cord or plug in liquid at any time
- Unplug cord from outlet when not in use and before cleaning
- Do not operate unattended
- Do not use this unit for anything other than intended use
- Do not use outdoors
- Always use on a firm, dry and level surface at least 12" from walls or any other obstruction
- Do not use if unit has a damaged cord or plug, in the event the appliance malfunctions, or has been damaged in any manner
- Keep children and animals away from unit
- Any incorrect installation, alterations, adjustments and/or improper maintenance can lead to property loss and injury. All repairs should be done by authorized professionals only
- Ensure that the designated power supply is adequate for continual usage and the voltage is correct
- Do not open or remove cover of the oven as this will void the warranty

TO ASSEMBLE

1. Ensure that there is at least 6 inches of clearance on all sides, including top and back of the unit.
2. Unit should be installed on a flat sturdy surface
3. Be sure that the unit is properly grounded to minimize shock or fire hazard.
4. Line up handle and panel together. Be sure that the handle will flip upwards.
5. Insert grill by inserting hook into oval opening on the panel. The hook should face upwards when installing.
6. Place the washer on the bolt and insert into the top round hole through the handle and panel.
7. Secure tightly with the screw from behind the panel.

****Improper assembly of the flip up handle to the grill could cause the grill to turn or fall off when moving product, possibly causing injury or burns.***

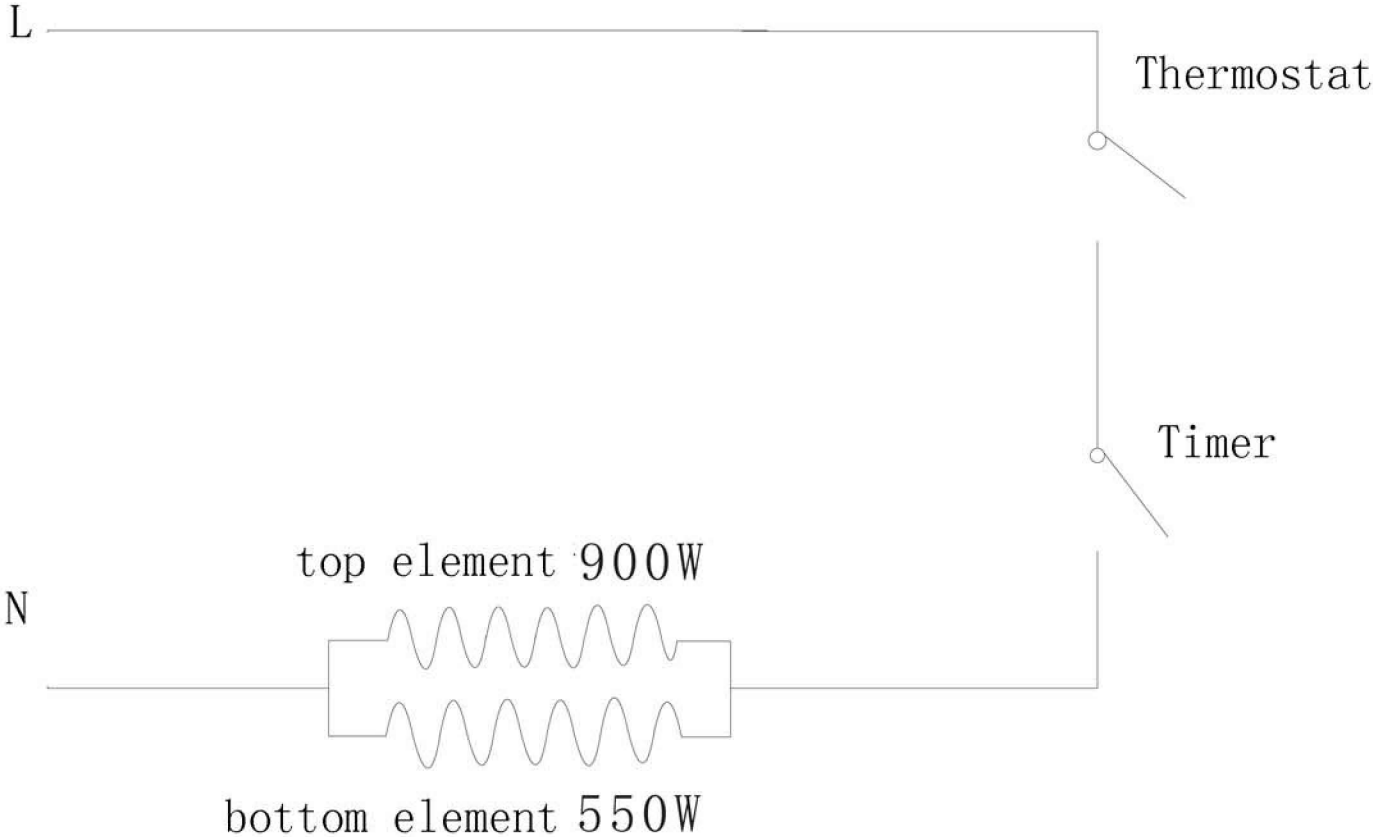
TO USE

1. Oven requires no preheating.
2. Set the desired cook time by turning the knob of the timer switch.
3. Maintain constant supervision of oven while in use.
4. Caution should be used when removing food from the oven. Oven mitts or protective gear should be used to avoid the hot panel.
5. Unplug oven when not in us.

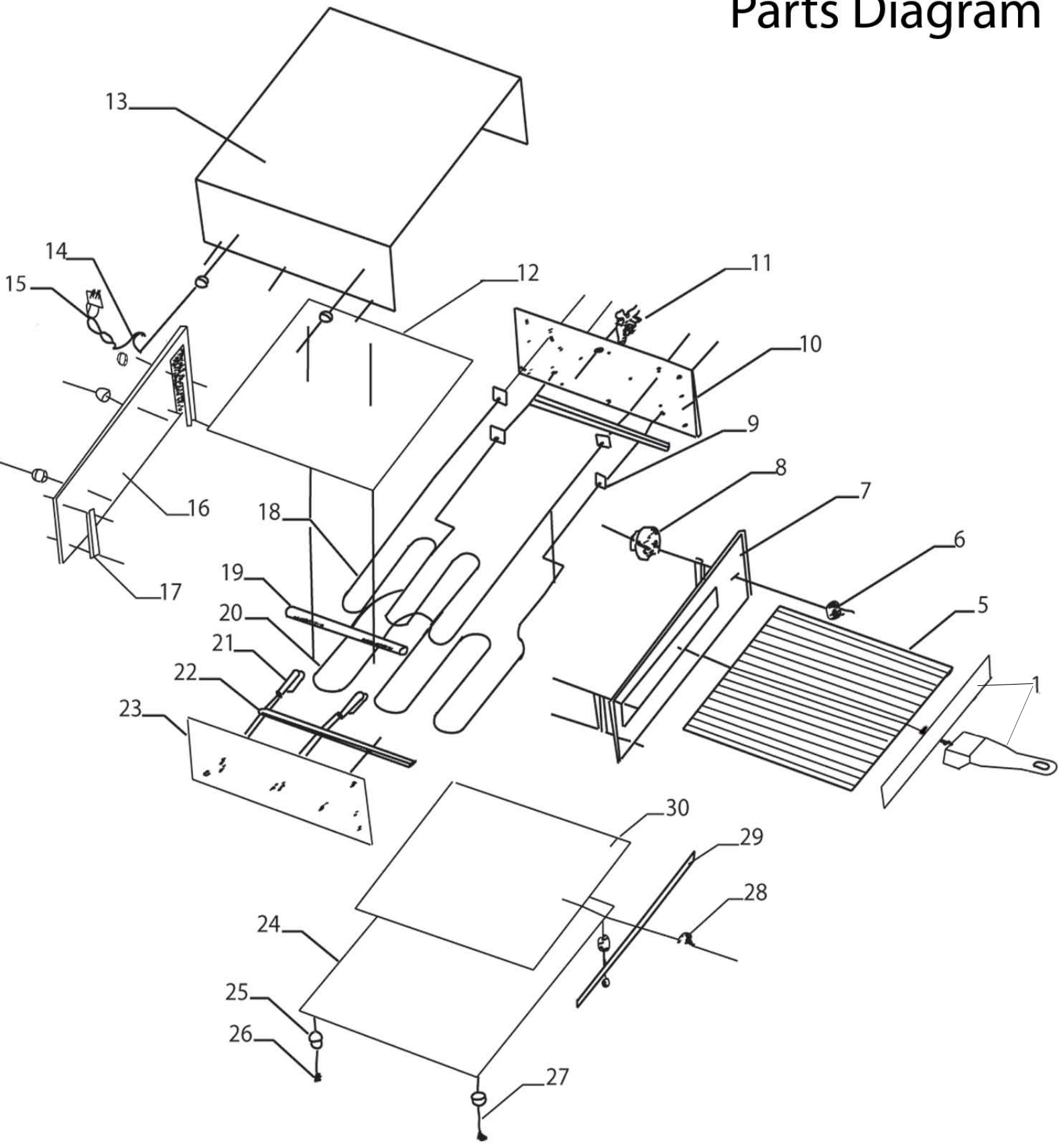
CLEANING – NOTE: To maintain cleanliness and increase service life, the brewer should be cleaned daily. Do not immerse the unit in water or any other liquid. If liquid enters the electrical compartment it may cause a short circuit or electrical shock

1. Allow unit to completely cool before cleaning.
2. Disconnect the cord from the outlet.
3. Slide out the crumb tray and remove any soil.
4. Wipe the crumb tray with a damp cloth.
5. Return the crumb tray to its proper position.
6. Wipe the outside of the unit with a damp cloth, then wipe dry.
7. Use caution while cleaning as there may be sharp edges.
8. To avoid damage, do not use abrasive cleaners or scouring pads.
9. If soap or chemical cleaners are used, be sure they are completely rinsed away with clear water immediately after cleaning. Chemical residue could damage or corrode the surfaces of the unit.

Snack Oven CK-2
Circuit Diagram



CK-2 Parts Diagram



Snack Oven - CK-2

Reference Number	Part Number	Description
1	CK-1	Clip/Handle/Plate/Nut
5	CK-5	Food Grid
6	CK-6	Timer Knob
7	-	Front Panel
8	CK-8	Timer
9	-	Plate for Element
10	-	Right Insulation Plate
11	CK-11	Thermostat
12	-	Top Insulation Plate
13	-	Body Shell
14	-	Spacer
15	CK-15	Power Cord and Strain Relief
16	-	Back Plate
17	-	Slot for Bracket
18	CK-18	Upper Element 120V/900W
19	-	Hook for Element
20	CK-20	Lower Heating Element - 120V/550W
21	-	Hook for Element
22	-	Bracket for Food Grid
23	-	Left Insulation Plate
24	-	Bottom Plate
25-27	CK-25	Bakelite Foot/Clad/Screw
28-30	CK-28	Crumb Tray/Handle/Front Plate

VER811

ACE Electrical Equipment One Year Warranty

ACE warrants its equipment against defects in materials and workmanship, subject to the following conditions: This warranty applies to the original owner only, and is not assignable.

ACE Electrical Equipment is warranted for one year, effective from the date of purchase by the original owner. A copy of the original receipt, or other proof of purchase is required to obtain warranty coverage.

Should any product fail to function in its intended manner under normal use within the limits defined in this warranty, at ACE's discretion, such product will be repaired, replaced with a refurbished unit, or replaced with a new unit by ACE, after defective unit has been inspected and defect has been confirmed. ACE does not assume any liability for extended delays in replacing any item beyond its control. This warranty does not apply to rubber and non-metallic synthetic parts where usage, wear, or lack of preventative maintenance may create abnormal replacement rates, and these parts are excluded from this limited warranty.

This warranty covers products shipped into the 48 contiguous United States, Hawaii, and metropolitan areas of Alaska and Canada. Warranty coverage on products used outside the 48 contiguous United States, Hawaii and metropolitan areas of Alaska and Canada may vary. Contact ACE for details at 1-800-223-7750

The following conditions are not covered by warranty:

- Equipment failure relating to improper installation, improper utility connection or supply and problems due to improper ventilation.
- Equipment that has not properly been maintained, damage for improper cleaning, and water damage to controls.
- Equipment that has not been used in an appropriate manner, or has been subject to misuse, neglect, abuse, accident, alteration, negligence, damage during transit, delivery or installation, fire, flood, riot, or act of God.
- Equipment that has the model number or serial number removed or altered.
- Equipment on which the security seal has been broken.

If the equipment has been changed, altered, modified, or repaired without express written permission from ACE, then the manufacturer shall not be liable for any damages to any person or to any property, which may result from the use of this equipment thereafter.

This equipment is intended for commercial use only. Warranty is void if equipment is used in other than a commercial application.

In the event your repair is not covered under the stated warranty provisions, parts are available by calling 1-800-223-7750. Equipment not covered by repair should be picked up from our warehouse facility within 10 business days from notification date. Any and all arrangements and expenses for the return of this merchandise is your responsibility.

“THE FOREGOING WARRANTY IS IN LIEU OF ANY AND ALL WARRANTIES EXPRESSED OR IMPLIED INCLUDING ANY IMPLIED WARRANTY OF MERCHANTABILITY OR FITNESS FOR PARTICULAR PURPOSES AND CONSTITUTES THE ENTIRE LIABILITY OF ACE. IN NO EVENT DOES THE LIMITED WARRANTY EXTEND BEYOND THE TERMS STATED HEREIN.”

VER811