



## Solid French-Style Burner Countertop Electric Ranges



05/2022

**Models:** 177CER200, 177CER400

***Please read and keep these instructions. Indoor use only.***

## Index

Important Safety Information.....	3
Specifications .....	4
Installation .....	4
Operation.....	5
Cleaning .....	5
Troubleshooting .....	6
Parts Diagram.....	7

## Important Safety Information



**WARNING!**

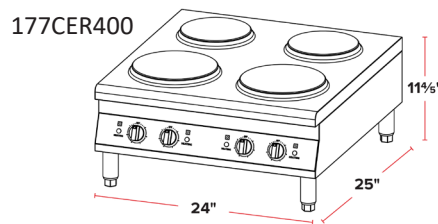
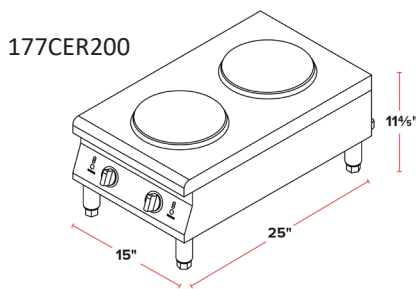
When using electrical appliances, basic safety precautions should always be followed, including the following:

1. Read all instructions carefully and completely.
2. For commercial use only.
3. Do not touch hot surfaces.
4. Protect against electrical shock by keeping all cords, plugs, and other electrical components away from water or other liquids.
5. Unplug this unit when not in use and before cleaning.
6. Allow the unit to cool before putting on or taking off parts.
7. Do not operate this or any appliance with a damaged electrical cord or plug.
8. Do not operate this or any appliance after it has malfunctioned or been damaged in any way.
9. Do not use outdoors.
10. Disconnect the unit by turning the temperature control to "OFF", then removing the electrical plug from the wall outlet.
11. Do not use appliance for any application other than intended use.
12. Do not allow this oven to touch or be covered by flammable material, such as curtains, draperies, walls, etc., when in operation.
13. Do not clean with metal scouring pads as pieces can break off and touch electrical components, heightening the risk of electrical shock
14. This appliance is not intended for use by persons (including children) with reduced physical sensory or mental capabilities, or lack of experience and knowledge, unless they have been given supervision or instruction concerning use of the appliance by a person responsible for their safety.
15. Place unit on a flat surface that is well ventilated. The appliances must be supervised during operation, DO NOT leave appliance without powering off.

**NOTE: SAVE THESE INSTRUCTIONS FOR FUTURE REFERENCE.**

## Specifications

MODEL #	DESCRIPTION	OVERALL DIMENSIONS	VOLTAGE	WATTAGE PER BURNER	TOTAL WATTAGE	PLUG
177CER200	Dual Solid Burner Electric Range	15"W x 25"D x 11.8"H	208/240V	2000W	3000/4000W	NEMA 6-20P
177CER400	Four Solid Burner Electric Range	24"W x 25"D x 11.8"H	208/240V	(2) 2000W (2) 1500W	5000/7000W	NEMA 6-30P



## Installation



### CAUTION!

This unit should be installed in a non-combustible location only.



### CAUTION!

The installation must be performed by qualified personnel or the warranty will be void.



### WARNING!

Check the serial plate on this unit before installation. Only connect the unit to the voltage and frequency listed on the serial plate.

1. Remove the electric range, parts, and other documentation from the box/carton and dispose of any non-essential packaging materials.
2. Turn the unit upside down and install the 4 legs into the threaded inserts on the unit.
3. Turn the unit right side up and place in the intended operating location, adjusting the legs to ensure the unit is level and secure
4. Remove any protective plastic sheeting from the range and wipe down all surfaces.
5. Before initial use, plug the unit in and turn the temperature control to the maximum setting and allow the equipment to warm-up for 10-15 minutes. You may notice smoke appearing due to the cooking surface and elements burning-in. This is normal and after 10-15 minutes the equipment is ready to use.
6. Continue to operating instructions.

## Electrical Connections

Check the serial plate to determine what voltage this unit requires.



**WARNING: IMPROPER GROUNDING COULD RESULT IN ELECTRICAL SHOCK.**

This unit is equipped with a three-prong (grounded) electrical plug for your protection against shock hazard. It should be plugged directly into a properly grounded three-prong receptacle.

**DO NOT CUT OR REMOVE THE GROUNDING PRONG FROM THIS PLUG.**

## Operation

1. Plug the unit in using the correct outlet and electrical connection
2. Turn on the selector switch to the desired setting for each burner.
3. Wait approximately 10-15 minutes for the unit to preheat to the desired temperature.
4. Cook or warm food products in the desired manner.
5. At the end of operation, turn each selector switch to the off position and unplug. Allow the unit to cool down before performing any cleaning or other maintenance.

## Cleaning

**NOTE: DO NOT IMMERSE THE CORD, PLUG, OR EQUIPMENT IN WATER OR OTHER LIQUID**

1. Allow the equipment to cool completely before cleaning
2. Unplug the equipment

**NOTE: DO NOT CLEAN THE EQUIPMENT WITH HIGHLY ABRASIVE OBJECTS SUCH AS STEEL WOOL.**

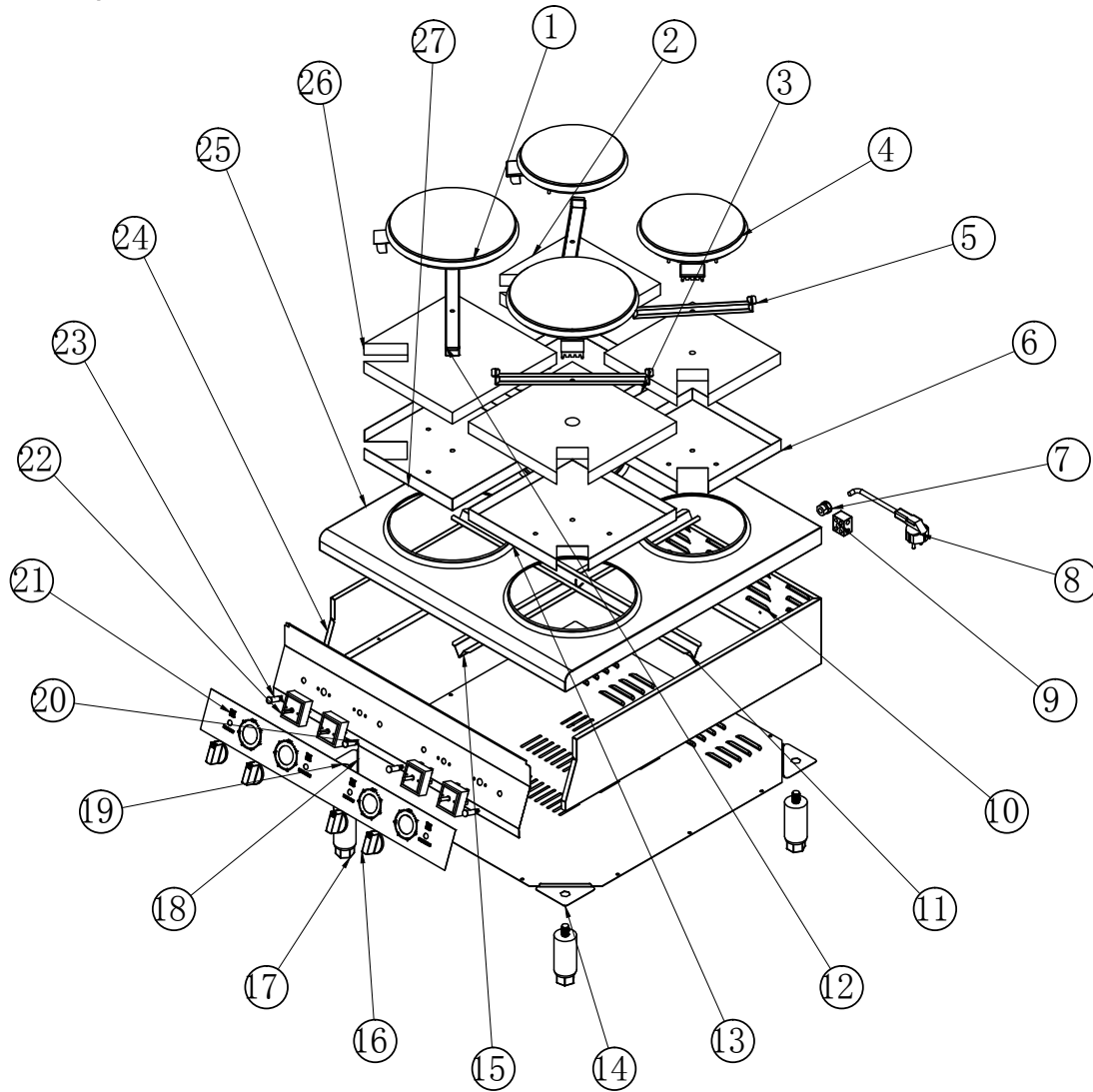
3. Use a damp cloth or sponge dipped in soapy water to clean the equipment
4. Dry thoroughly after cleaning

## Troubleshooting

PROBLEM	CAUSE	REMEDY
Indicator light does not come on when the selector switch is in a position other than "OFF" or 0	The equipment is not plugged in	Plug in the equipment
	Indicator light malfunction	Replace pilot light
	Selector switch malfunction	Replace selector switch
Indicator light does come on, but the equipment does not heat	Selector switch malfunction	Replace selector switch
	Heating element malfunction	Replace heating element

## Parts Diagram

177CER200/177CER400



#	DESCRIPTION	ITEM #	MODEL
1	Burner (2000W)	177PCER2001	177CER200 / 177CER400
4	Burner (1500W)	177PCER4001	177CER400
8	Power cord	177PCER2006	177CER200 / 177CER400
9	Terminal	177PCER2007	177CER200 / 177CER400
16	Knob	177PCER20013	177CER200 / 177CER400
17	Adjustable feet	177PCER20011	177CER200 / 177CER400
20	Working indication light	177PCER20015	177CER200 / 177CER400
22	Switch	177PCER20016	177CER200 / 177CER400