

Quick Start Guide

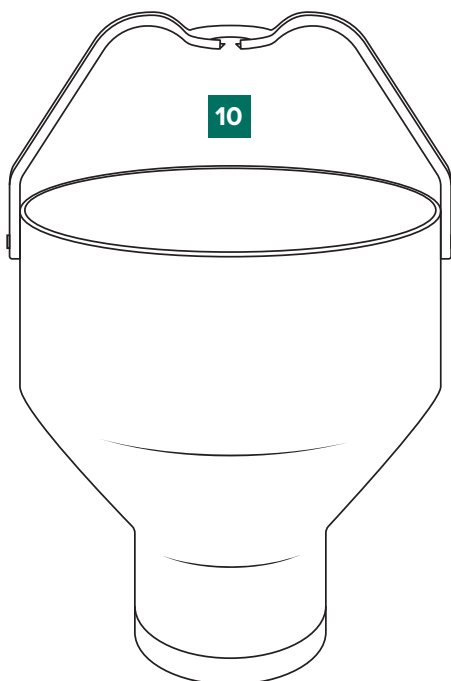
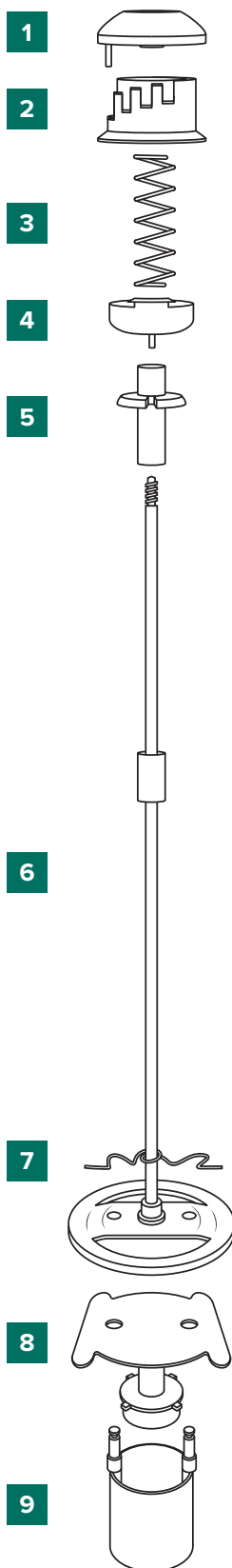
Aluminum Pancake/Waffle Batter Dispenser

176BATTERDIS



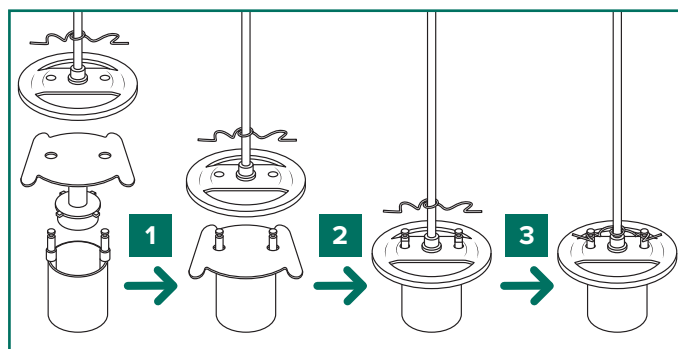
Parts List

#	Description
1	Knob
2	Dial Adjustment Ring
3	Operating Spring
4	Peg Key
5	Upper Bearing
6	Plunger Shaft
7	Lock Spring
8	Upper Piston
9	Piston Cylinder
10	Hopper

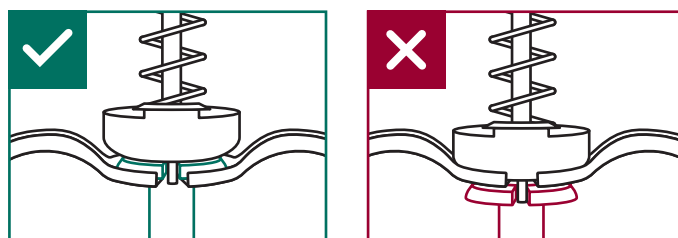


Initial Assembly

1. Insert the Upper Piston into the Piston Cylinder by lining up the pegs of the Cylinder with the holes on the plate of the Upper Piston.
2. Attach the Plunger Shaft to the Piston Assembly by lining up the pegs with the holes in the plate of the Plunger Shaft.
3. Secure the Plunger Shaft to the Piston Assembly by clipping the Lock Spring into place on the slots of the Plunger Shaft.



4. Slide the assembled Plunger Shaft into the bottom of the hopper and through the notch in the hopper arch.
5. Slide the Upper Bearing down the Plunger Shaft from the top, through the hole in the Hopper arch so the flared portion of the piece rests in the indent on top of the arch. Line up the rectangular bump, rotating 180 degrees after the bump is below the arch.
6. Slide the Peg Key (peg side down) down the Plunger Shaft from the top, resting it atop the Upper Bearing with the peg extending through the cutout in the Upper Bearing. Reference the diagrams below for correct/incorrect version in context of steps 5 & 6.



7. Slide the Operating Spring down the Plunger Shaft, resting it inside the Peg Key.
8. Slide the Dial Adjustment Ring onto the Plunger Shaft, resting it on top of the Operating Spring.
9. Screw the Knob onto the top of the Plunger Shaft. Inserting the peg into the Dial Adjustment Ring.

Quick Start Guide

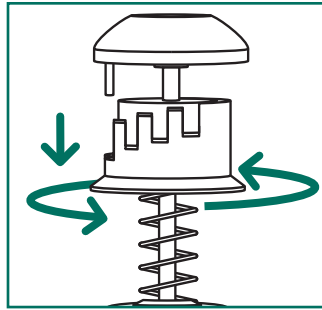
Aluminum Pancake/Waffle Batter Dispenser

176BATTERDIS



How to Use the Dial Adjustment

1. Push the dial down from the knob to release it from the peg.
2. Rotate the dial to the desired number.
Note: Dial ranges 1-8: 1 is smallest amount, 8 is largest amount
3. Release the dial, sliding the peg into the slot.



Note: DO NOT force the dial knob or attempt to use any external tool on the dial. It operates freely when instructions are followed.

Operation

1. Make sure all pieces are correctly assembled as outlined in the Initial Assembly section and securely in place.
2. Do a couple dry runs of the dispenser by pushing the plunger down by the top knob. If anything is not operating properly, review the Initial Assembly section.
3. When certain that everything is in place and operating properly, fill the hopper with batter.
4. Hold the dispenser above the mixing bowl or a sink and depress the knob all the way down to release air from the valve. Repeat until batter comes out.
5. Do a test run by holding the dispenser 1½" away from the cooking surface, depress the knob all the way, and release.
6. If too much or too little batter is released, follow the Dial Adjustment instructions above.
7. Hold the dispenser 1½" above the cooking surface, depress the knob all the way, and release.
8. Keep the hopper filled with batter to prevent air from entering the valve. If this happens, fill the hopper with batter, hold the dispenser over mixing bowl or sink, depress the knob and release, repeating until batter comes out.
9. When finished with the dispenser, it should be cleaned as soon as possible after use.

Cleaning

1. Holding the dispenser over a sink, thoroughly rinse out the hopper of any remaining batter.
2. Remove the Plunger Shaft from the Hopper by aligning bump on upper bearing with notch, lifting up the Peg Key, rotating 180°, then pulling the Plunger Shaft free from the Hopper arch.
3. The Plunger Shaft can now be lifted out of the Hopper. Set the Hopper to the side.
4. Unclip the Lock Spring from the pegs on the Piston Assembly.
5. Slide the Piston Assembly off of the Plunger Shaft.
6. Slide the Upper Piston out of the Piston Cylinder being careful not to force or drop either piece as they are delicate and easily damaged.
7. Rinse all pieces off with water and clean using a mild detergent and a soft cloth.
8. Allow all pieces to completely dry, apply a light coat of oil to moving parts prevent sticking, and reassemble using the Initial Assembly instructions.