

**Bumble Bee Seafoods**  
**FINISHED PRODUCT SPECIFICATION**

Finished Good: 4135855124, 12/49.5OZ SSUE CKN BROTH CAN

**SPECIFICATION DETAILS**

Specification Details	
Brite Material Code	900381

**PRODUCT DETAILS**

Product Properties	
Brand	SWEET SUE

Distribution Markets	
	United States

Commodities	

Commodity Properties	
Species	
Method of Catch	
Social Compliance	

**PACK**

Pack Properties	
Style	Broth
Style Comments	
Fill Weight	

Media & Ingredients	
Media Type	Chicken Broth
Ingredients	Salt: Food grade. Chicken Broth Flavor Monosodium Glutamate Beta Carotene Chicken stock flavor

**REQUIREMENTS AND CERTIFICATIONS**

Regulatory Requirements	
Regulatory Body	USFDA
Regulatory Requirements Description	To meet USFDA and other US regulatory standards and requirements, including: * 21 CFR 101 Food Labeling * 21 CFR 117 Current Good Manufacturing Practice, Hazard Analysis, and Risk-Based Preventative Controls for Human Food * 21 CFR 113 Thermally Processed Low-Acid Foods Packaged in Hermetically Sealed Containers * Federal Food, Drug, and Cosmetic Act section 402

Certifications	
Certification Type	

Certification Description	
---------------------------	--

## CONTAINER

Container Properties	
Container Type	Can; internal can coatings will be certified by the can manufacturer as BPA-free or BPA not intentionally added.
Dimensions	404x700
Construction	3 piece
Can Material	ETP
End Material	Tin Free Steel
Color	Silver
Net Weight	49.5 oz (3 lb 1.5 oz) 1.40 kg
Drained Weight	
Net Weight Tolerance	Complies with NIST Handbook 133, Table 2-9 for USDA products. Target 49.6 oz ; LCL 49.5 oz ; UCL 50.5 oz; Maximum 51 oz
Drained Weight Tolerance	
Vacuum	10-15 inches gauge. All cans with ends flat or concave.
Headspace	
Container Comments	Free from rust, oil, filth or other abnormalities. All labels must be approved by Bumble Bee Foods Quality Assurance prior to use.

Container Production Code	
Code Format	US 3 years: The Container Code and Best By date (3 years from the date of production) will be marked on the individual can or pouch with the words: BEST BY MMM YYYY. Where: MMM refers to the first three letters of the month in English when the product expires and YYYY refers to the full year when the product expires. For example: Production date October 15 2003 would be marked with BEST BY OCT 2006. Alternative format: BEST BY MMM DD YYYY.

## LABEL

Ingredient Statements	
Market	United States
	CHICKEN BROTH (WATER, CHICKEN BROTH SEASONING [SALT, MONOSODIUM GLUTAMATE, SUGAR, CHICKEN FAT, YEAST EXTRACT, ONION POWDER, HYDROLYZED SOY PROTEIN, NATURAL FLAVOR, SPICE EXTRACTIVES, CARAMEL COLOR, SILICON DIOXIDE {ANTI-CAKING AGENT}], SALT, CHICKEN BROTH CONCENTRATE, MONOSODIUM GLUTAMATE, NATURAL FLAVOR. BETA CAROTENE [COLOR]).

Allergy Statements	
Market	United States
	CONTAINS: SOY

Label Details	
Label Comments	All labels must be approved by Bumble Bee Foods Quality Assurance prior to use.

## QUALITY

Organoleptic Features	
Top Appearance	

Odor / Flavor	Typical chicken broth flavor.
Color	Light golden, translucent
Texture	
Salt	Average lot target 0.9% salt. Range 0.7% to 1.1%
Fat	

Defects	
Defects	
Comments	
Defect Description	

Chemistry	
pH	6.75 +/- 0.30
Histamine	
Mercury	
Phosphate	

Microbiology	
Microbiology Comments	Minimum Fo 6.0. Commercially sterile.

## CASE

Case Properties	
Case Type	Tray
Marking	Stick-on case label that contains the bar code, the BB lot code (production code), BEST BY date, the product name, and DISTRIBUTED BY SWEET SUE INC.
Case Comments	Recommended tray specification, or equivalent, or better, or as approved by Bumble Bee Foods/Clover Leaf Seafoods: Printed Side: KS170, Middle corrugate: CS110 Flute B or CA125 Flute, Inside: KT125 or KI125 Board to be used on bottom of tray, if lower tray specification is used. Film overwrap used on trays will not deteriorate (break or tear) during the shelf-life of the product, including during normal handling conditions during transportation and storage. Film tensile strength 160 to 180 kg./cm <sup>2</sup> , tear resistance 375 to 430 gf. Film will remain flexible and will not become brittle between -20°C to +40°C. ALL CANS, POUCHES OR KITS WILL BE PACKED IN CORRUGATED CARTONS OR TRAYS OVERWRAPPED WITH PLASTIC SHRINK WRAP. IMPRINTED CARTON OR TRAY AND CAN PACK LABEL SHALL CONFORM TO STANDARDS SET FORTH BY QUALITY ASSURANCE.
SU Gross Weight	13.25
Master Carton	100395

## PALLET

Pallet Stacking Pattern					
Item	Cases per Pallet	Cases per Layer	Layers High	Tags	Comments
10000018483	48	8	6	US: Refer to Bumble Bee Foods QA Manual Procedure reference number 2.6.1 e.	

## SHIPPING PACKAGE

Shipping Package Properties	
Slip Sheets	Shall be used or as per purchase order agreement.

## MISCELLANEOUS

**Miscellaneous**

Recommended Handling	Shipped and stored in ambient temperatures. For food quality reasons, storage temperatures more than 100°F for extended periods should be avoided. Do not freeze.
----------------------	---

**CONFIRMATION OF RECEIPT**

---

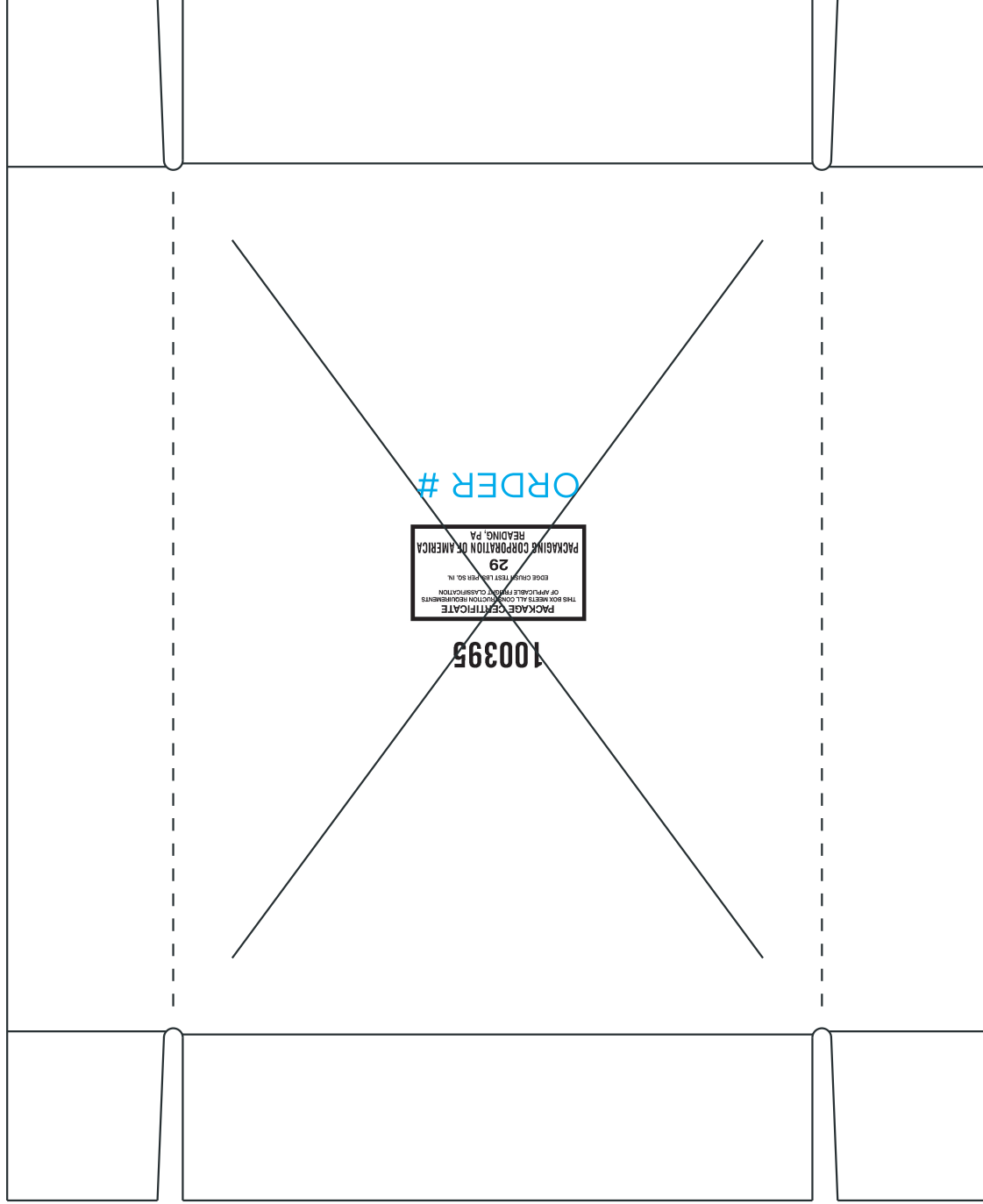
Customer Name \_\_\_\_\_

Signature \_\_\_\_\_

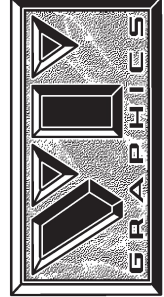
Date \_\_\_\_\_

Customer: \_\_\_\_\_  
Item: \_\_\_\_\_

File Part: \_\_\_\_\_  
Die Location: **RRPT0099**



**PACKAGE CERTIFICATE**  
THIS BOX MEETS ALL CONSTRUCTION REQUIREMENTS  
OF APPLICABLE FREIGHT CLASSIFICATION  
EDGE CRUSH TEST LBS. PER SQ. IN.  
**29**  
**PACKAGING CORPORATION OF AMERICA**  
READING, PA



**100395**

CAUTION: Check this miniature carefully for copy, color reference, size and layout.  
Our responsibility ends with the replacement of any incorrect die or miniature.

VT Graphics Incorporated Flexographic Production • Design • Art  
465 Penn Street • Yeaton, PA 19050-3016  
Voice: (610) 259-4090 • Fax: (610) 259-7235 • E-mail: [www.vtgraph.com](http://www.vtgraph.com)

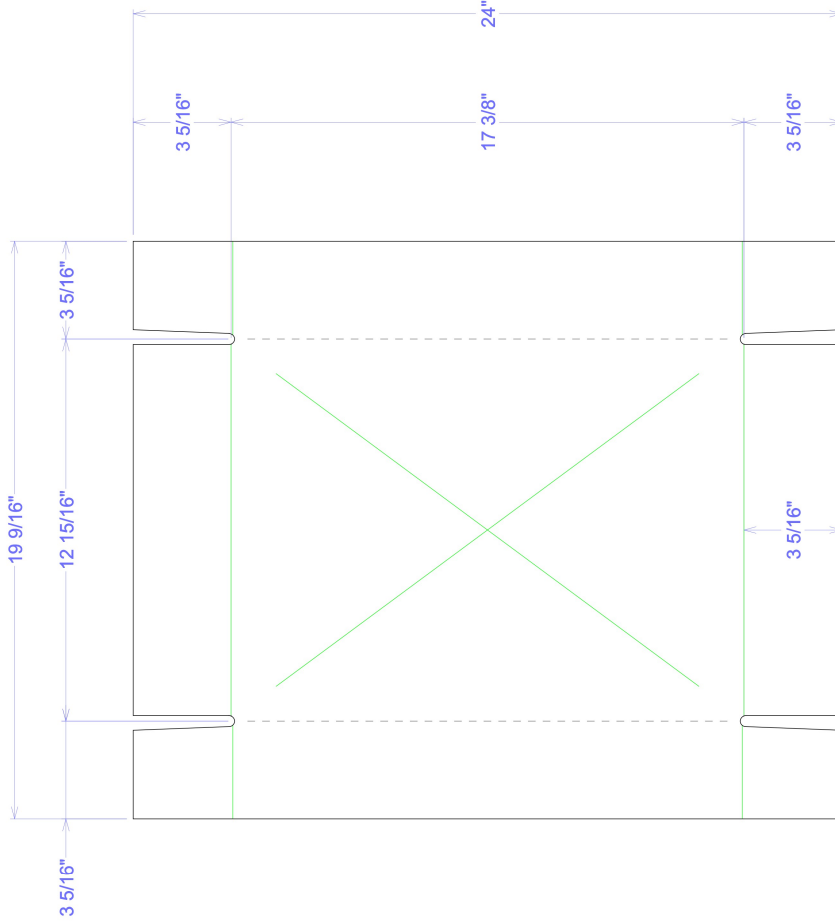
PRINT REGISTER 1st \_\_\_\_\_ 2nd \_\_\_\_\_ 3rd \_\_\_\_\_  
PULL COLLARS 1st \_\_\_\_\_ 2nd \_\_\_\_\_ 3rd \_\_\_\_\_

11/13  
JOB# 124740

# CAD SPEC

## Cutting Die #: RRCT35

All Perf = 1/4" X 1/4"



Validation  
Reviewed

Verification  
Reviewed

Customer:  
**Bumble Bee Foods LLC**  
**Snows Doxee / Bumblebee**  
Project Description:  
**Customer Specs**

Customer Ident 1:  
**100395**  
Customer Ident 2:  
**100395**  
Creation Date: | Revision Date:  
**11/9/2012** | **11/5/2013**

Dimensions (Inside):

**17 1/4" x 12 7/8" x 3 1/4"**

Style: **Die Cut**

Joint: **None**

Board Grade/Flute/Combo:

**29 ECT B Flute**

**B-35-23M-26**

Blank Size: **24" x 19 9/16"**

Layout Size: **48" x 97 13/16"**

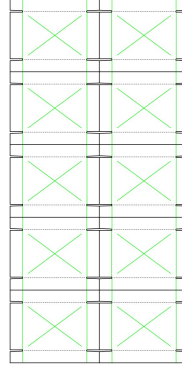
Sheet Size: **48 3/4" x 98 5/16"**

Sq Ft: **3.26 sq ft** Waste %: **100**

Total Rule: **1928**

Master set #: **1 of 1**

Count Needed: **1**



**LEAD EDGE**

Corrugation Direction: **Vertical**

**-OUTSIDE VIEW-**

NOTES:

Designer: Mark Zarzecki  
Salesperson:  
KENNEDY, MIKE

Project Number/Rev  
**P388-3382-2**  
CAD Number/Rev  
**P388-3382-2 100395**



7451 Cetronia Road  
Allentown, PA, 18106  
(610) 366-6528

**SWEET SUE RECIPE****Southern Chicken Vegetable Soup**

- 1 (49.5 oz.) can Sweet Sue® 99% Fat Free Chicken Broth
- 2 (10 oz.) cans Sweet Sue® Premium Chicken Breast, drained
- 3 c. frozen mixed vegetables
- 1 1/4 c. rainbow rotini or elbow macaroni
- 2/3 c. chopped tomatoes and green chilies with juice
- 3/4 Tsp. onion powder
- 1/4 Tsp. dried oregano or thyme
- Snipped fresh parsley, optional
- Salt and pepper to taste

Bring Sweet Sue® Broth to a boil in a large saucepan. Add drained Sweet Sue® Chicken that has been chopped into bite-sized pieces, vegetables, rotini, chopped tomatoes and green chilies, onion powder, and oregano. Reduce heat; simmer for 7-8 minutes or until pasta is tender. Garnish with parsley. Add salt and pepper to taste. Serve with crusty French bread or crackers. Serves 8.

You can always count on delicious, home-style recipes from the kitchens of Sweet Sue.®



Our original recipes use only the finest ingredients to guarantee quality goodness for your family every time.

From the kitchens of



# Sweet Sue®

## Chicken Broth

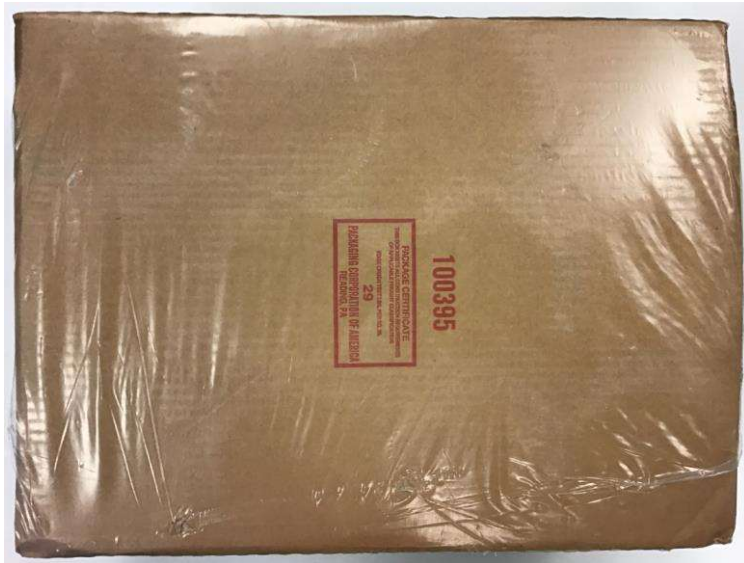
99% FAT FREE

\*See nutrition facts for sodium content

Rich  
Chicken  
Flavor

Serving  
Suggestion

NET WT 49.5 OZ  
(3 LB 1.5 OZ)  
1.40 kg



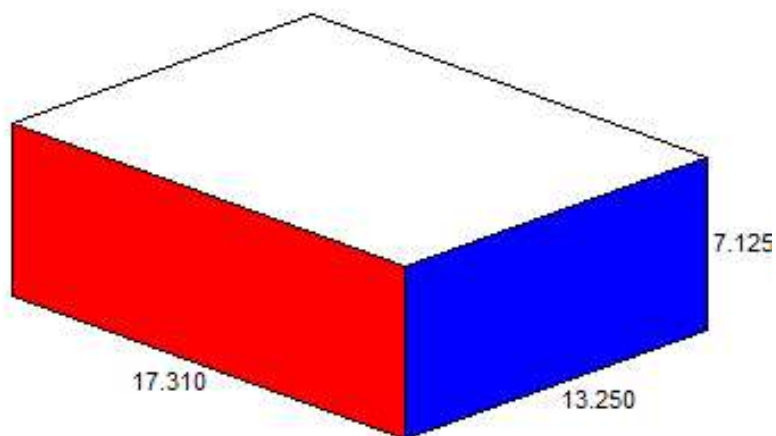
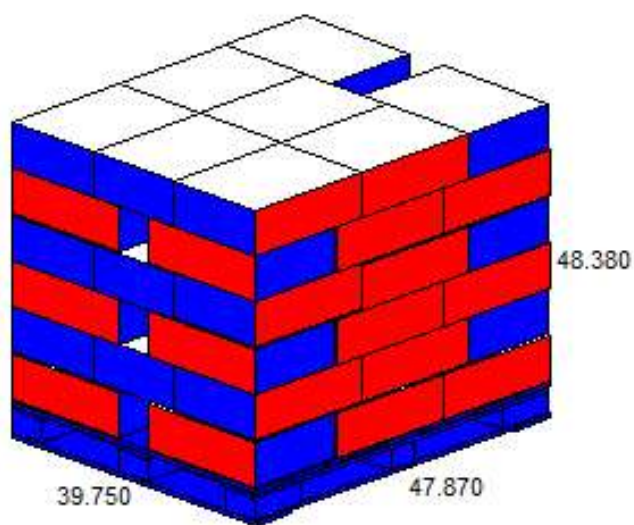
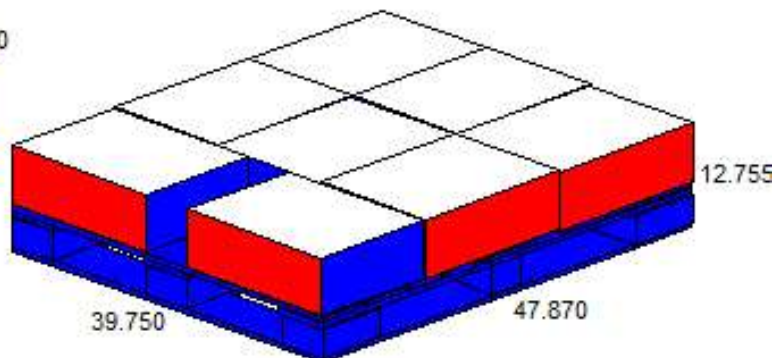
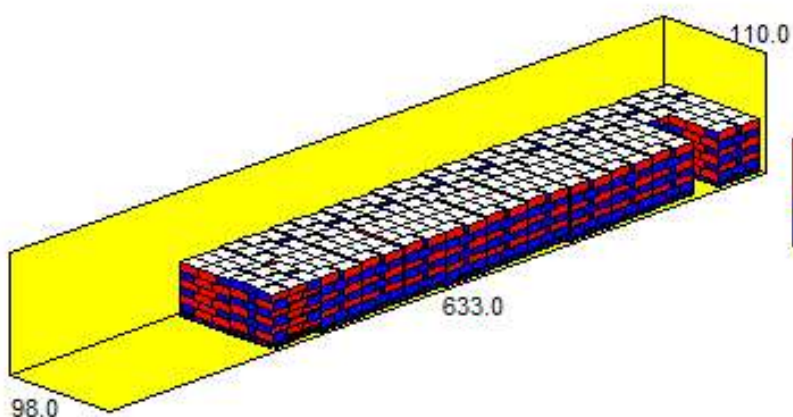




Thursday, December 30, 2010

Product Name	Pallet Group		
Product Code	Cases/Trays/Ovals		
Datafile Name	48t 12-49.5oz ckn broth can (12/30/2010)		
Load Ref.	1 I		
Cube Used	84.5 %	8	Case / Layer
Area Used	95.6 %	6	Layer / Load
Pallet type	bluechep	48	Case / Load
Truck Ref.	5 S	1008	Case / greatdan
Truck Area Used	65.0 %	21	Load / greatdan
Truck Cube Used	28.6 %		

	Length	Width	Height	Net	Gross	Volume
Case (OD)	17.310	13.250	7.125 in	41.910	41.910 lb	0.95 cuft
Product	47.870	39.750	42.750 in	2011.680	2011.680 lb	47.08 cuft
Load	48.000	40.000	48.380 in	2011.680	2077.680 lb	53.76 cuft
Product	472.000	88.000	48.380 in	42245.3	43631.3 lb	1162.91 cuft
greatdan	633.000	98.000	110.000 in	43631.3	43631.3 lb	3948.92 cuft



1. INPUT UPC AND DESCRIPTION
  2. ADDITIONAL (OPTIONAL)
  3. ISSUED DATE
  4. SHIP FROM PLANT, # SLIPS, # CASES, TOTAL WEIGHT
- SPECIAL SHIPPING INSTRUCTIONS:
5. SHIP FROM DC, # PALLETS, # CASES, TOTAL WEIGHT