

Base Product Code	110833000
GTIN	10094562108332
Case UPC	9456210833
Distributor Name	No Distributor Selected
Distributor Product Code	
Min Shelf life upon Arrival	57 Days
Unit Weight	
Units per Case	120
Case Dimensions	Case Dimensions (in): 18.68 (L) X 10.62 (W) X 9.25 (H)
Gross Case Weight	35.31 LB
Net Case Weight	33.75 LB
Pallet Information	Layer: 9, High: 7, Pal Qty: 63

Product Description

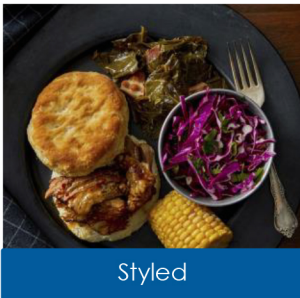
Pillsbury(TM) pre-portioned large Southern Style biscuit dough in an easy, freezer-to-oven format. Formulated to produce light and fluffy, easy split, 4.5oz biscuits every time, with savory, rich butter flavor for a scratch-like texture and appearance.

Benefits

Pre-portioned Southern Style biscuit dough in an easy, freezer-to-oven format from Pillsbury(TM). Formulated to produce light and fluffy 4.5 ounce easy split biscuits with rich, buttery flavor and scratch-like flavor, texture, and appearance. 120 - 4.5oz biscuits bulk packed per case, perfect for any commercial operation. Consistent light and fluffy biscuits with superior texture and quality allow for a multiple hour hold time, saving on product waste and labor.

Storage Instructions

FRAGILE HANDLE WITH CARE. KEEP FROZEN STORE AT OR BELOW 0° F/-18° C
Biscuit dough is not ready-to-eat and must be thoroughly cooked before eating. To prevent illness from naturally occurring bacteria in wheat flour, do not eat raw dough; wash hands and surfaces after handling.



Nutrition Facts			
Serving Size	1 Biscuit (128g) As Packaged		(100g) As Packaged
Calories	400kcal		313kcal
		%DV*	
Total Fat	17g	22%	14g
Saturated Fat	11g	56%	9g
Trans Fat	0g		0g
Cholesterol	0mg	0%	1mg
Sodium	1190mg	52%	929mg
Total Carbohydrate	55g	20%	43g
Dietary Fiber	2g	6%	1g
Total Sugars	5g		4g
Incl. Added Sugars	4g	7%	3g
Protein	6g		5g
Vitamin D	0µg	0%	0µg
Calcium	70mg	6%	54mg
Iron	3mg	15%	2mg
Potassium	100mg	2%	75mg
*Percent Daily Value (DV) are based on a 2,000 calorie diet			
**Not a significant nutrient source			

Preparation
BAKE : Follow instructions on the package

Ingredients & Claims
ENRICHED FLOUR (WHEAT FLOUR, NIACIN, FERROUS SULFATE, THIAMIN MONONITRATE, RIBOFLAVIN, FOLIC ACID), WATER, PALM OIL, PALM KERNEL OIL, SUGAR, BUTTERMILK, SODIUM ALUMINUM PHOSPHATE, BAKING SODA, SALT, SODIUM ACID PYROPHOSPHATE, DEXTROSE, DOUGH CONDITIONER (ENZYMES).

CONTAINS WHEAT AND MILK INGREDIENTS.

Kosher Dairy