

Home of the The Original Fry Bread

Available in 2 sizes:

8.5"
wholesale

5"
mini



Cinnamon sugar topping

Taste the sweet & savory possibilities!



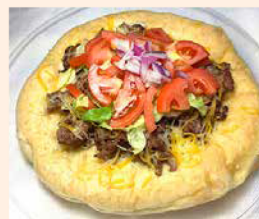
Top with Fruit



Apple Brown Betty



S'mores



Taco



Pizza



The perfect treat to
serve at your venue -
just heat & eat!



NO
EGGS



NO
DAIRY



NO
NUT PRODUCTS



NO
TRANS FATS



NO
SATURATED FATS



NO
PRESERVATIVES



VEGAN
FRIENDLY



LOW
CALORIE

Product Shelf Life non-refrigerated is 4 to 5 days. Place in Freezer upon arrival - thaw and heat desired amount to enjoy.



Guests at venues across the country truly enjoy satisfying their hunger with Fried Dough, Elephant Ears or Indian Fry Bread. Unfortunately for food service facilities these items are labor intensive, messy, inconsistent in quality and slow in production speed.

With Brian's Fabulous Frybread, food service facilities finally have the ability to eliminate these problems and **capitalize on that window of opportunity that is crucial to the success of any food service operation.**

Delicious taste, high output, versatility, clean practically labor less, consistent quality and accountability are just a few of the benefits of Brian's Fabulous Frybread.

Topping Ideas

- Pizza Sauce
- Ice Cream With Fruit
- Honey
- Cinnamon And Sugar
- Garlic Butter w/Grated Parmesan
- Refried Beans With Sour Cream And Salsa
- Powdered Sugar
- Apple Turnover Filling
- Maple Syrup
- Strawberries With Powdered Sugar
- French Toast Style Fudge
- Almost Anything You Can Imagine!



Product Features

- ✓ **Handmade for that old fashioned homemade appeal**
- ✓ **Easy to set up** - No special preparation or modifications
- ✓ **High Output** - Under a minute cook time enables speedy service, the fastest item from the refrigerator to the customer
- ✓ **Labor Efficient** - No excess personnel required, fast training
- ✓ **Cost Efficient** - Low food cost, high perceived volume
- ✓ **Clean** - No mess to clean up
- ✓ **Versatile** - Can be served as a dessert of a meal, just change the topping
- ✓ **Assorted tastes** - the diversity of toppings is limited only by your imagination
- ✓ **Healthy** - No eggs, dairy, peanut oil or preservatives, virtually eliminates the possibility of food-borne illness
- ✓ **Forgiving** - Can be refrozen
- ✓ **No Trans Fat**

8.5" Wholesale

Nutrition Facts	
36 servings per container	
Serving size 6 1/2 oz (184g)	
Amount per serving	
Calories	500
% Daily Value *	
Total Fat 18g	23%
Saturated Fat 3g	15%
Trans Fat 2.5g	
Cholesterol 0mg	0%
Sodium 650mg	28%
Total Carbohydrate 70g	26%
Dietary Fiber 2g	8%
Total Sugars 4g	
Includes 3g Added Sugars	6%
Protein 12g	
Vitamin D 0mcg	0%
Calcium 30mg	2%
Iron 4.7mg	25%
Potassium 120mg	2%
Folate 250mcg DFE (130mcg Folic Acid)	60%
* The % Daily Value (DV) tells you how much a nutrient in a serving of food contributes to a daily diet. 2,000 calories a day is used for general nutrition advice.	
Calories per gram: Fat 9 • Carbohydrate 4 • Protein 4	

INGREDIENTS: Enriched Wheat Flour (flour, malt, barley flour, niacin, reduced iron, thiamine, mononitrate, riboflavin), Water, Soy Bean Oil, Sugar, Salt, Dough Conditioner (wheat flour, soy flour, calcium, salts, soy bean oil, enzymes, ascorbic acid, azodcardonamide calcium)

wheat, soy

CONTAINS: soy, wheat

5" minis

Nutrition Facts	
60 servings per container	
Serving size 3 1/2 oz (99g)	
Amount per serving	
Calories	270
% Daily Value *	
Total Fat 10g	12%
Saturated Fat 1.5g	8%
Trans Fat 1.5g	
Cholesterol 0mg	0%
Sodium 350mg	15%
Total Carbohydrate 38g	14%
Dietary Fiber 1g	5%
Total Sugars 2g	
Includes 1g Added Sugars	3%
Protein 7g	
Vitamin D 0mcg	0%
Calcium 20mg	2%
Iron 2.6mg	15%
Potassium 70mg	2%
* The % Daily Value (DV) tells you how much a nutrient in a serving of food contributes to a daily diet. 2,000 calories a day is used for general nutrition advice.	
Calories per gram: Fat 9 • Carbohydrate 4 • Protein 4	

Ingredients: Enriched Wheat Flour (wheat flour, malt, barley flour, niacin, reduced iron, thiamine, mononitrate, riboflavin, folic acid, malted barley flour), Water, Soy Bean Oil (propylene glycol, tertiary butyl hydroquinone, citric acid and dimethylpolysiloxane), Sugar, Salt (yellow prussiate of soda), Conditioner (wheat flour, diacetyl tartaric acid esters of mono and diglycerides, 2% or less of :dextrose, ascorbic acid, enzymes, soybean oil, Yeast, Sorbitan Monostearate, Ascorbic Acid, wheat Contains: wheat

Shipping Specifications (all weights, quantities and dimensions are approximate)

Fabulous FryBread	Case Pack	Unit Weight	Case Weight	Tiers/Pallet	Case Dim.	Case Cube	Pallet Weight	Pcs/Pallet
8.5" Wholesale Frozen	36	6.5oz	16.5 lbs	9	19.25" x 12.75" x 8.25"	1.2	1085	2268
8.5" Wholesale 2 pk Frozen	18 / 2 packs	6.5oz	16.5 lbs	9	19.25" x 12.75" x 8.25"	1.2	1085	1134 2 packs
8.5" Wholesale 4 pk Frozen	8 / 4 packs	6.5oz	15.5 lbs	9	19.25" x 12.75" x 8.25"	1.2	1022	504 4 packs
5" Minis Frozen	60	3.5 oz	15.5 lb	10	19.25" x 12.75" x 6"	0.85	1022	4200

Find more recipes on our website fabulousfrybread.com

fabulousfrybreads@gmail.com | t: 866.332.3231 | f: 860.482.0269

BriCins, Inc. Corporate Headquarters 347 Technology Park Dr., Torrington, CT 06790