



**Glo-Ray<sup>®</sup>**

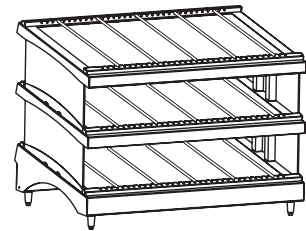
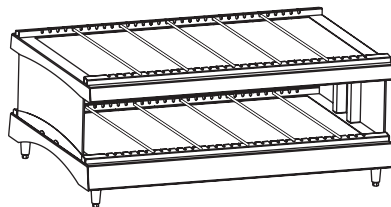
# Heated Glass Merchandisers

## ***GR3SDH & GR3SDS Series***

---

<i>GR3SDH-27</i>	<i>GR3SDS-27</i>
<i>GR3SDH-33</i>	<i>GR3SDS-33</i>
<i>GR3SDH-39</i>	<i>GR3SDS-39</i>
<i>GR3SDH-27D</i>	<i>GR3SDS-27D</i>
<i>GR3SDH-33D</i>	<i>GR3SDS-33D</i>
<i>GR3SDH-39D</i>	<i>GR3SDS-39D</i>

---



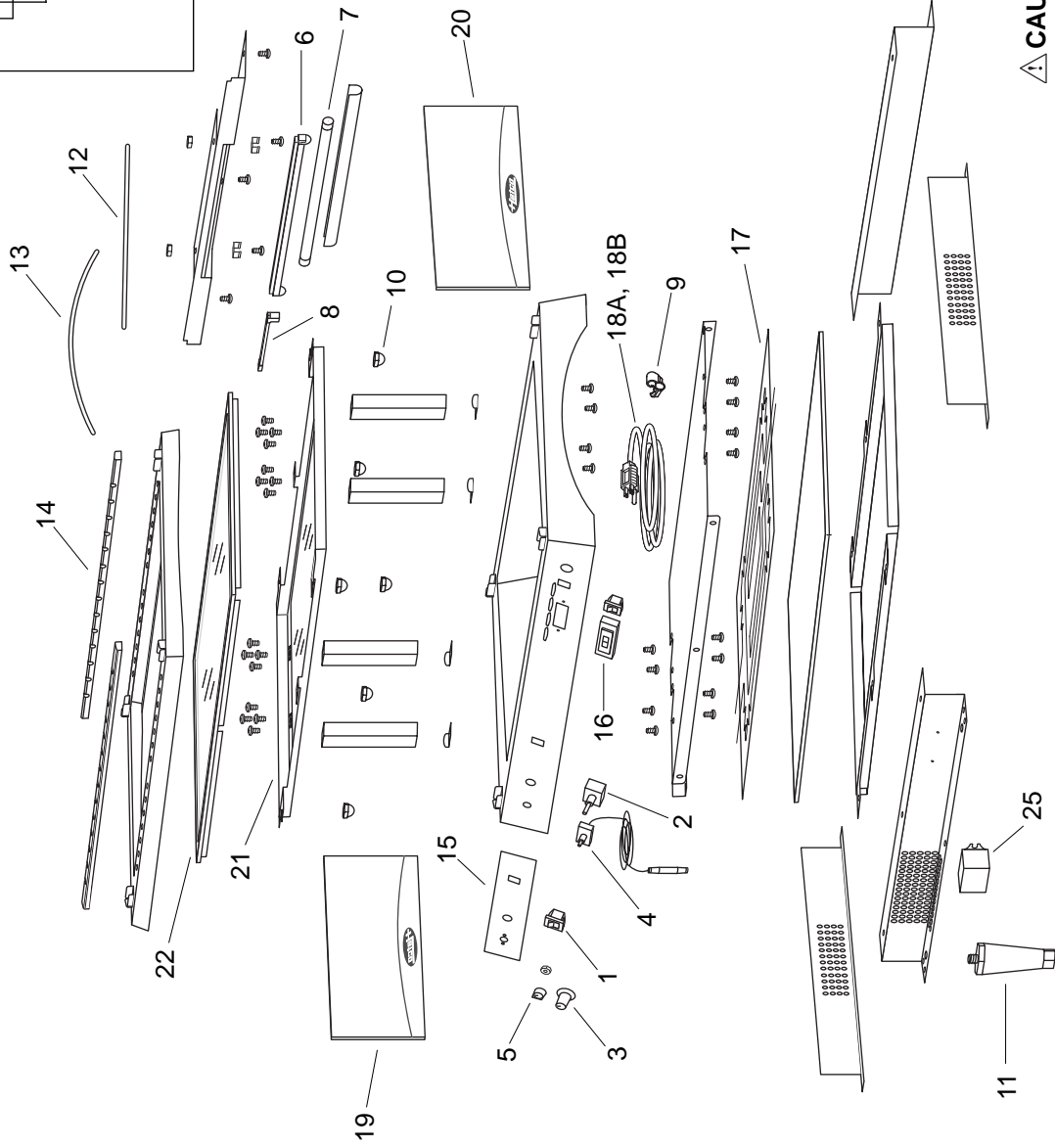
## **REPLACEMENT PARTS LIST**

---

# Hatco Glo-Ray® Heated Glass Merchandisers GR3SDH Series

## Model Designation

GR3SDH-XXD	G= Glo-
	R= Ray
	3= Heated Glass Technology
	S= Sandwich
	D= Display
	H= Horizontal Shelf
	XX= Width in Inches
	D= Dual Shelf

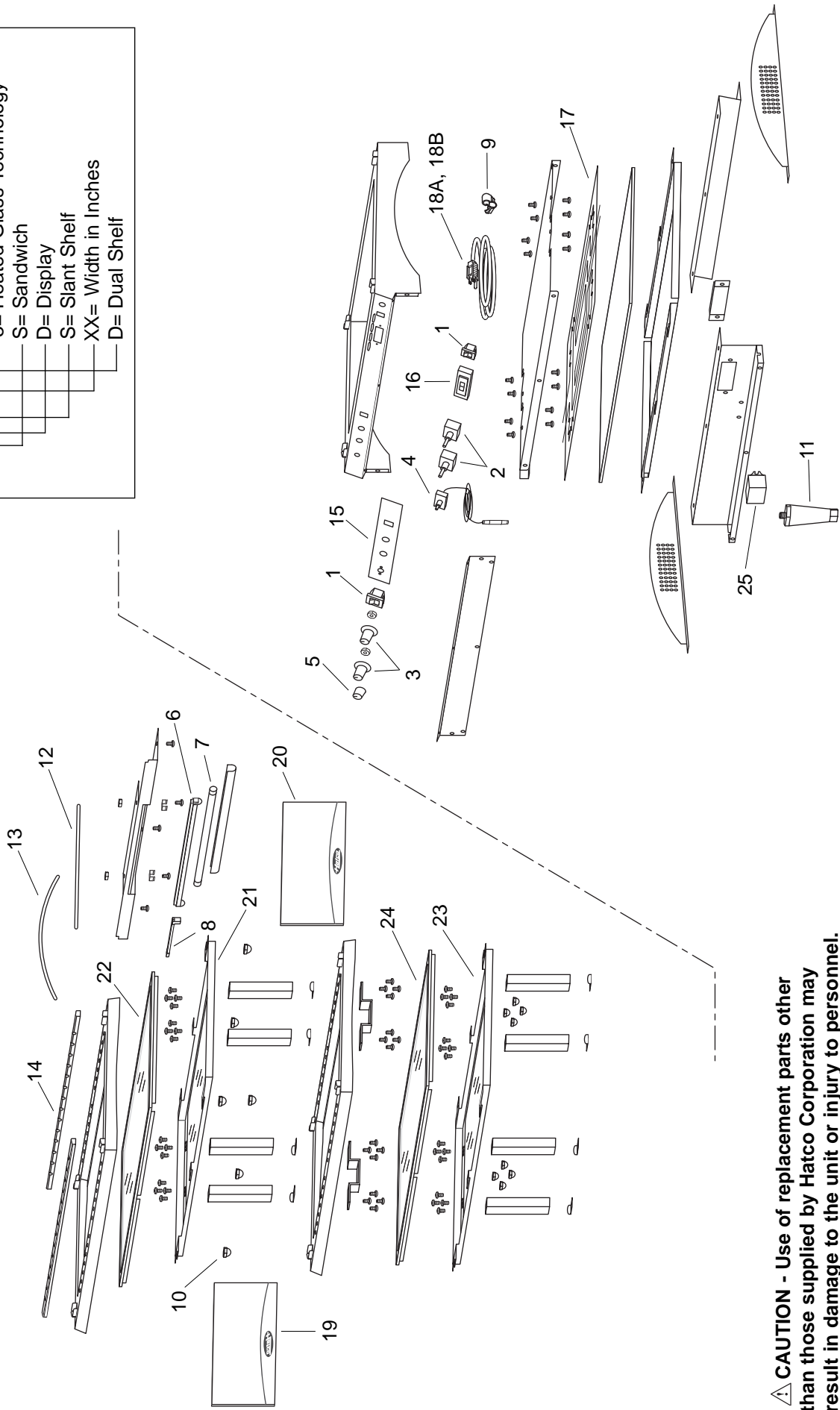


**⚠ CAUTION - Use of replacement parts other than those supplied by Hatco Corporation may result in damage to the unit or injury to personnel.**

# Hatco Glo-Ray® Heated Glass Merchandisers GR3SDS Series

## Model Designation

GR3SDS-XXD	G= Glo-
	R= Ray
	3= Heated Glass Technology
	S= Sandwich
	D= Display
	S= Slant Shelf
	XX= Width in Inches
	D= Dual Shelf



**⚠ CAUTION - Use of replacement parts other than those supplied by Hatco Corporation may result in damage to the unit or injury to personnel.**

## PARTS COMMON TO ALL GR3SDH & GR3SDS MODELS

ITEM	DESCRIPTION	PART NO.	QTY.	ITEM	DESCRIPTION	PART NO.	QTY.
1	On/Off Switch	02.19.080.00	1-2*	8	Fluorescent Lamp Cord Only	02.30.090.00	1-2*
2	Infinite Switch Control	R02.19.018.00	1-2*	9	Cord Grip	02.20.226.00	1-2*
3	Knob, Infinite Switch	05.30.043.00	1-2*	10	Acorn Nut	05.04.068A.00	10-26*
4	Thermostat Control, Base	R02.16.066.00	1	11	Leg, Plastic, 2-1/2" (64 mm)	05.30.040.00	4
5	Knob, Thermostat	05.30.039.00	1	12	Divider Rod, Straight (Standard)	04.38.275.00	10-21*
6	Fluorescent Lamp Assembly	02.30.089.00	1-2*	13	Divider Rod, Curved (Optional)	04.38.099.00	10-21*
7	Fluorescent Bulb Only	02.30.092.00	1-2*				

\*Quantity varies based on model.

## PARTS SPECIFIC TO MODEL GR3SDH-27

ITEM	DESCRIPTION	120V	120V Canada	120/208-240V
14	Channel Divider (Qty. 4)	04.38.082.00	04.38.082.00	---
15	Control Plate Decal	07.01.281.00	07.01.281.00	---
16	GFCI Switch	02.01.194.00	02.01.194.00	---
17	Blanket Heating Element, Base	02.05.353.00	02.05.353.00	---
18A	Power Cord and Plug, Straight Blade	02.18.154.00	02.18.154.00	---
18B	Power Cord and Plug, Locking	---	---	---
19	Glass End Panel, RH	04.40.179.00	04.40.179.00	---
20	Glass End Panel, LH	04.40.179.00	04.40.179.00	---
21	Heated Bottom Glass Assembly, Upper Shelf	R04.40.181TB.00	R04.40.181TB.00	---
22	Non-Heated Top Glass Assembly, Upper Shelf	R04.40.194.00	R04.40.194.00	---
23	Heated Bottom Glass Assembly, Middle Shelf	---	---	---
24	Non-Heated Top Glass Assembly, Middle Shelf	---	---	---
25	Relay, 30 Amp, 120 Volt	---	---	---
	Electrical Diagram	10.01.299.00	10.01.299.00	---

**PARTS SPECIFIC TO MODEL GR3SDH-33**

ITEM	DESCRIPTION	120V	120V Canada	120/208-240V
14	Channel Divider (Qty. 4)	04.38.083.00	04.38.083.00	---
15	Control Plate Decal	07.01.281.00	07.01.281.00	---
16	GFCI Switch	02.01.194.00	02.01.194.00	---
17	Blanket Heating Element, Base	02.05.341.00	02.05.341.00	---
18A	Power Cord and Plug, Straight Blade	02.18.154.00	02.18.154.00	---
18B	Power Cord and Plug, Locking	---	---	---
19	Glass End Panel, RH	04.40.179.00	04.40.179.00	---
20	Glass End Panel, LH	04.40.179.00	04.40.179.00	---
21	Heated Bottom Glass Assembly, Upper Shelf	R04.40.182TB.00	R04.40.182TB.00	---
22	Non-Heated Top Glass Assembly, Upper Shelf	R04.40.195.00	R04.40.195.00	---
23	Heated Bottom Glass Assembly, Middle Shelf	---	---	---
24	Non-Heated Top Glass Assembly, Middle Shelf	---	---	---
25	Relay, 30 Amp, 120 Volt	---	---	---
	Electrical Diagram	10.01.299.00	10.01.299.00	---

**PARTS SPECIFIC TO MODEL GR3SDH-39**

ITEM	DESCRIPTION	120V	120V Canada	120/208-240V
14	Channel Divider (Qty. 4)	04.38.025.00	04.38.025.00	---
15	Control Plate Decal	07.01.281.00	07.01.281.00	---
16	GFCI Switch	02.01.194.00	02.01.194.00	---
17	Blanket Heating Element, Base	02.05.343.00	02.05.343.00	---
18A	Power Cord and Plug, Straight Blade	02.18.154.00	02.18.089.00	---
18B	Power Cord and Plug, Locking	---	---	---
19	Glass End Panel, RH	04.40.179.00	04.40.179.00	---
20	Glass End Panel, LH	04.40.179.00	04.40.179.00	---
21	Heated Bottom Glass Assembly, Upper Shelf	R04.40.183TB.00	R04.40.183TB.00	---
22	Non-Heated Top Glass Assembly, Upper Shelf	R04.40.196.00	R04.40.196.00	---
23	Heated Bottom Glass Assembly, Middle Shelf	---	---	---
24	Non-Heated Top Glass Assembly, Middle Shelf	---	---	---
25	Relay, 30 Amp, 120 Volt	---	---	---
	Electrical Diagram	10.01.299.00	10.01.299.00	---

**PARTS SPECIFIC TO MODEL GR3SDH-27D**

ITEM	DESCRIPTION	120V	120V Canada	120/208-240V
14	Channel Divider (Qty. 6)	04.38.082.00	04.38.082.00	---
15	Control Plate Decal	07.01.282.00	07.01.282.00	---
16	GFCI Switch	02.01.194.00	02.01.194.00	---
17	Blanket Heating Element, Base	02.05.353.00	02.05.353.00	---
18A	Power Cord and Plug, Straight Blade	02.18.154.00	02.18.089.00	---
18B	Power Cord and Plug, Locking	---	---	---
19	Glass End Panel, RH (Qty. 2)	04.40.179.00	04.40.179.00	---
20	Glass End Panel, LH (Qty. 2)	04.40.179.00	04.40.179.00	---
21	Heated Bottom Glass Assembly, Upper Shelf	R04.40.181TB.00	R04.40.181TB.00	---
22	Non-Heated Top Glass Assembly, Upper Shelf	R04.40.194.00	R04.40.194.00	---
23	Heated Bottom Glass Assembly, Middle Shelf	R04.40.181MB.00	R04.40.181MB.00	---
24	Non-Heated Top Glass Assembly, Middle Shelf	R04.40.194.00	R04.40.194.00	---
25	Relay, 30 Amp, 120 Volt Electrical Diagram	---	---	---
		10.01.323.00	10.01.323.00	---

**PARTS SPECIFIC TO MODEL GR3SDH-33D**

ITEM	DESCRIPTION	120V	120V Canada	120/208-240V
14	Channel Divider (Qty. 6)	---	---	04.38.083.00
15	Control Plate Decal	---	---	07.01.282.00
16	GFCI Switch	---	---	02.01.194.00
17	Blanket Heating Element, Base	---	---	02.05.341.00
18A	Power Cord and Plug, Locking	---	---	02.18.128.00
18B	Power Cord and Plug, Straight Blade	---	---	02.18.085.00
19	Glass End Panel, RH (Qty. 2)	---	---	04.40.179.00
20	Glass End Panel, LH (Qty. 2)	---	---	04.40.179.00
21	Heated Bottom Glass Assembly, Upper Shelf	---	---	R04.40.182TB.00
22	Non-Heated Top Glass Assembly, Upper Shelf	---	---	R04.40.195.00
23	Heated Bottom Glass Assembly, Middle Shelf	---	---	R04.40.182MB.00
24	Non-Heated Top Glass Assembly, Middle Shelf	---	---	R04.40.195.00
25	Relay, 30 Amp, 120 Volt Electrical Diagram	---	---	---
		---	---	10.01.300.00

**PARTS SPECIFIC TO MODEL GR3SDH-39D**

ITEM	DESCRIPTION	120V	120V Canada	120/208-240V
14	Channel Divider (Qty. 6)	---	---	04.38.025.00
15	Control Plate Decal	---	---	07.01.282.00
16	GFCI Switch	---	---	02.01.221.00
17	Blanket Heating Element, Base	---	---	02.05.343.00
18A	Power Cord and Plug, Locking	---	---	02.18.128.00
18B	Power Cord and Plug, Straight Blade	---	---	02.18.085.00
19	Glass End Panel, RH (Qty. 2)	---	---	04.40.179.00
20	Glass End Panel, LH (Qty. 2)	---	---	04.40.179.00
21	Heated Bottom Glass Assembly, Upper Shelf	---	---	R04.40.183TB.00
22	Non-Heated Top Glass Assembly, Upper Shelf	---	---	R04.40.196.00
23	Heated Bottom Glass Assembly, Middle Shelf	---	---	R04.40.183MB.00
24	Non-Heated Top Glass Assembly, Middle Shelf	---	---	R04.40.196.00
25	Relay, 30 Amp, 120 Volt Electrical Diagram	---	---	02.01.224.00 10.01.300.00

**PARTS SPECIFIC TO MODEL GR3SDS-27**

ITEM	DESCRIPTION	120V	120V Canada	120/208-240V
14	Channel Divider (Qty. 4)	04.38.082.00	04.38.082.00	---
15	Control Plate Decal	07.01.281.00	07.01.281.00	---
16	GFCI Switch	02.01.194.00	02.01.194.00	---
17	Blanket Heating Element, Base	02.05.353.00	02.05.353.00	---
18A	Power Cord and Plug, Straight Blade	02.18.154.00	02.18.154.00	---
18B	Power Cord and Plug, Locking	---	---	---
19	Glass End Panel, RH	04.40.192.00	04.40.192.00	---
20	Glass End Panel, LH	04.40.191.00	04.40.191.00	---
21	Heated Bottom Glass Assembly, Upper Shelf	R04.40.181TB.00	R04.40.181TB.00	---
22	Non-Heated Top Glass Assembly, Upper Shelf	R04.40.194.00	R04.40.194.00	---
23	Heated Bottom Glass Assembly, Middle Shelf	---	---	---
24	Non-Heated Top Glass Assembly, Middle Shelf	---	---	---
25	Relay, 30 Amp, 120 Volt Electrical Diagram	10.01.299.00	10.01.299.00	---

**PARTS SPECIFIC TO MODEL GR3SDS-33**

ITEM	DESCRIPTION	120V	120V Canada	120/208-240V
14	Channel Divider (Qty. 4)	04.38.083.00	04.38.083.00	---
15	Control Plate Decal	07.01.281.00	07.01.281.00	---
16	GFCI Switch	02.01.194.00	02.01.194.00	---
17	Blanket Heating Element, Base	02.05.341.00	02.05.341.00	---
18A	Power Cord and Plug, Straight Blade	02.18.154.00	02.18.154.00	---
18B	Power Cord and Plug, Locking	---	---	---
19	Glass End Panel, RH	04.40.192.00	04.40.192.00	---
20	Glass End Panel, LH	04.40.191.00	04.40.191.00	---
21	Heated Bottom Glass Assembly, Upper Shelf	R04.40.182TB.00	R04.40.182TB.00	---
22	Non-Heated Top Glass Assembly, Upper Shelf	R04.40.195.00	R04.40.195.00	---
23	Heated Bottom Glass Assembly, Middle Shelf	---	---	---
24	Non-Heated Top Glass Assembly, Middle Shelf	---	---	---
25	Relay, 30 Amp, 120 Volt Electrical Diagram	10.01.299.00	10.01.299.00	---

**PARTS SPECIFIC TO MODEL GR3SDS-39**

ITEM	DESCRIPTION	120V	120V Canada	120/208-240V
14	Channel Divider (Qty. 4)	04.38.025.00	04.38.025.00	---
15	Control Plate Decal	07.01.281.00	07.01.281.00	---
16	GFCI Switch	02.01.194.00	02.01.194.00	---
17	Blanket Heating Element, Base	02.05.343.00	02.05.343.00	---
18A	Power Cord and Plug, Straight Blade	02.18.154.00	02.18.089.00	---
18B	Power Cord and Plug, Locking	---	---	---
19	Glass End Panel, RH	04.40.192.00	04.40.192.00	---
20	Glass End Panel, LH	04.40.191.00	04.40.191.00	---
21	Heated Bottom Glass Assembly, Upper Shelf	R04.40.183TB.00	R04.40.183TB.00	---
22	Non-Heated Top Glass Assembly, Upper Shelf	R04.40.196.00	R04.40.196.00	---
23	Heated Bottom Glass Assembly, Middle Shelf	---	---	---
24	Non-Heated Top Glass Assembly, Middle Shelf	---	---	---
25	Relay, 30 Amp, 120 Volt Electrical Diagram	10.01.299.00	10.01.299.00	---



**PARTS SPECIFIC TO MODEL GR3SDS-27D**

ITEM	DESCRIPTION	120V	120V Canada	120/208-240V
14	Channel Divider (Qty. 6)	04.38.082.00	04.38.082.00	---
15	Control Plate Decal	07.01.282.00	07.01.282.00	---
16	GFCI Switch	02.01.194.00	02.01.194.00	---
17	Blanket Heating Element, Base	02.05.353.00	02.05.353.00	---
18A	Power Cord and Plug, Straight Blade	02.18.154.00	02.18.154.00	---
18B	Power Cord and Plug, Locking	---	---	---
19	Glass End Panel, RH (Qty. 2)	04.40.192.00	04.40.192.00	---
20	Glass End Panel, LH (Qty. 2)	04.40.191.00	04.40.191.00	---
21	Heated Bottom Glass Assembly, Upper Shelf	R04.40.181TB.00	R04.40.181TB.00	---
22	Non-Heated Top Glass Assembly, Upper Shelf	R04.40.194.00	R04.40.194.00	---
23	Heated Bottom Glass Assembly, Middle Shelf	R04.40.181MB.00	R04.40.181MB.00	---
24	Non-Heated Top Glass Assembly, Middle Shelf	R04.40.194.00	R04.40.194.00	---
25	Relay, 30 Amp, 120 Volt Electrical Diagram	---	---	---
		10.01.323.00	10.01.323.00	---

**PARTS SPECIFIC TO MODEL GR3SDS-33D**

ITEM	DESCRIPTION	120V	120V Canada	120/208-240V
14	Channel Divider (Qty. 6)	04.38.083.00	---	04.38.083.00
15	Control Plate Decal	07.01.282.00	---	07.01.282.00
16	GFCI Switch	02.01.194.00	---	02.01.194.00
17	Blanket Heating Element, Base	02.05.341.00	---	02.05.341.00
18A	Power Cord and Plug, Locking	---	---	02.18.128.00
18B	Power Cord and Plug, Straight Blade	02.18.154.00†	---	02.18.085.00
19	Glass End Panel, RH (Qty. 2)	04.40.192.00	---	04.40.192.00
20	Glass End Panel, LH (Qty. 2)	04.40.191.00	---	04.40.191.00
21	Heated Bottom Glass Assembly, Upper Shelf	R04.40.182TB.00	---	R04.40.182TB.00
22	Non-Heated Top Glass Assembly, Upper Shelf	R04.40.195.00	---	R04.40.195.00
23	Heated Bottom Glass Assembly, Middle Shelf	R04.40.182MB.00	---	R04.40.182MB.00
24	Non-Heated Top Glass Assembly, Middle Shelf	R04.40.195.00	---	R04.40.195.00
25	Relay, 30 Amp, 120 Volt Electrical Diagram	---	---	---
		10.01.401.00	---	10.01.300.00

† Unit equipped with two straight blade power cord and plug sets.

**PARTS SPECIFIC TO MODEL GR3SDS-39D**

ITEM	DESCRIPTION	120V	120V Canada	120/208-240V
14	Channel Divider (Qty. 6)	---	---	04.38.025.00
15	Control Plate Decal	---	---	07.01.282.00
16	GFCI Switch	---	---	02.01.221.00
17	Blanket Heating Element, Base	---	---	02.05.343.00
18A	Power Cord and Plug, Locking	---	---	02.18.128.00
18B	Power Cord and Plug, Straight Blade	---	---	02.18.085.00
19	Glass End Panel, RH (Qty. 2)	---	---	04.40.192.00
20	Glass End Panel, LH (Qty. 2)	---	---	04.40.191.00
21	Heated Bottom Glass Assembly, Upper Shelf	---	---	R04.40.183TB.00
22	Non-Heated Top Glass Assembly, Upper Shelf	---	---	R04.40.196.00
23	Heated Bottom Glass Assembly, Middle Shelf	---	---	R04.40.183MB.00
24	Non-Heated Top Glass Assembly, Middle Shelf	---	---	R04.40.196.00
25	Relay, 30 Amp, 120 Volt Electrical Diagram	---	---	02.01.224.00 10.01.300.00



## HATCO AUTHORIZED PARTS DISTRIBUTORS

### ALABAMA

Jones McLeod Appl. Svc.  
Birmingham 205-251-0159

### ARIZONA

Auth. Comm. Food Equip.  
Phoenix 602-234-2443  
Byassee Equipment Co.  
Phoenix 602-252-0402

### CALIFORNIA

Industrial Electric  
Huntington Beach 714-379-7100  
Chapman Appl. Service  
San Diego 619-298-7106  
P & D Appliance  
S. San Francisco 650-635-1900

### COLORADO

Hawkins Commercial Appliance  
Englewood 303-781-5548

### FLORIDA

Whaley Foodservice Repair  
Jacksonville 904-725-7800  
Universal Restaurant Services  
Miami 305-593-5488  
Nass Service Co., Inc.  
Orlando 407-425-2681  
B.G.S.I.  
Pompano Beach 954-971-0456  
Comm. Appliance Service  
Tampa 813-663-0313

### GEORGIA

TWC Services  
Smyrna 770-438-9797  
Heritage Service Group  
Norcross 866-388-9837  
Southeastern Rest. Svc.  
Norcross 770-446-6177

### HAWAII

Burney's Comm. Service, Inc.  
Honolulu 808-848-1466  
Food Equip Parts & Service  
Honolulu 808-847-4871

### ILLINOIS

Parts Town  
Lombard 708-865-7278  
Eichenauer Elec. Service  
Decatur 217-429-4229  
Midwest Elec. Appl. Service  
Elmhurst 630-279-8000  
Cone's Repair Service  
Moline 309-797-5323

### INDIANA

GCS Service  
Indianapolis 317-545-9655

### IOWA

Electric Motor Service Co.  
Davenport 319-323-1823  
Goodwin Tucker Group  
Des Moines 515-262-9308

### KENTUCKY

GCS Service  
Louisville 502-367-1788

### LOUISIANA

Chandlers Parts & Service  
Baton Rouge 225-272-6620

### MARYLAND

Electric Motor Service  
Baltimore 410-467-8080  
GCS Service  
Silver Spring 301-585-7550

### MASSACHUSETTS

Ace Service Co., Inc.  
Needham 781-449-4220

### MICHIGAN

Commercial Kitchen Service  
Bay City 517-893-4561  
Bildons Appliance Service  
Detroit 248-478-3320  
Midwest Food Equip. Service  
Grandville 616-261-2000

### MINNESOTA

GCS Service  
Minneapolis 612-546-4221

### MISSOURI

General Parts  
Kansas City 816-421-5400  
Commercial Kitchen Services  
St. Louis 314-890-0700  
Kaemmerlen Parts & Service  
St. Louis 314-535-2222

### NEBRASKA

Anderson Electric  
Omaha 402-341-1414

### NEVADA

Burney's Commercial  
Las Vegas 702-736-0006  
Hi. Tech Commercial Service  
N. Las Vegas 702-649-4616

### NEW JERSEY

Jay Hill Repair  
Fairfield 973-575-9145  
Service Plus  
Flanders 973-691-6300

### NEW YORK

Acme American Repairs, Inc.  
Brooklyn 718-456-6544  
Alpro Service Co.  
Brooklyn 718-386-2515  
Appliance Installation  
Buffalo 716-884-7425  
Northern Parts Dist.  
Plattsburgh 518-563-3200  
J.B. Brady, Inc.  
Syracuse 315-422-9271

### NORTH CAROLINA

Authorized Appliance  
Charlotte 704-377-4501

### OHIO

Akron/Canton Comm. Svc. Inc.  
Akron 330-753-6635  
Certified Service Center  
Cincinnati 513-772-6600  
Commercial Parts and Service  
Columbus 614-221-0057  
Electrical Appl. Repair Service  
Independence 216-459-8700  
E. A. Wichman Co.  
Toledo 419-385-9121

### OKLAHOMA

Hagar Rest. Service, Inc.  
Oklahoma City 405-235-2184  
Krueger, Inc.  
Oklahoma City 405-528-8883

### OREGON

Ron's Service, Inc.  
Portland 503-624-0890

### PENNSYLVANIA

Elmer Schultz Services  
Philadelphia 215-627-5401  
FAST Comm. Appl. Service  
Philadelphia 215-288-4800  
Appliance Installation & Service  
Pittsburgh 412-809-0244  
K & D Service Co.  
Harrisburg 717-236-9039  
Electric Repair Co.  
Reading 610-376-5444

### RHODE ISLAND

Marshall Electric Co.  
Providence 401-331-1163

### SOUTH CAROLINA

Whaley Foodservice Repair  
W. Columbia 803-791-4420

### TENNESSEE

Camp Electric  
Memphis 901-527-7543

### TEXAS

Stove Parts Supply  
Fort Worth 817-831-0381  
Armstrong Repair Service  
Houston 713-666-7100  
Commercial Kitchen Repair Co.  
San Antonio 210-735-2811

### UTAH

La Monica's Rest. Equip. Service  
Murray 801-263-3221

### VIRGINIA

Daubers  
Norfolk 757-855-4097  
Daubers  
Springfield 703-866-3600

### WASHINGTON

Restaurant Appl. Service  
Seattle 206-524-8200

### WISCONSIN

A.S.C., Inc.  
Madison 608-246-3160  
A.S.C., Inc.  
Milwaukee 414-543-6460

## CANADA

### ALBERTA

Key Food Equipment Service  
Edmonton 780-438-1690

### BRITISH COLUMBIA

Key Food Equipment Service  
Vancouver 604-433-4484

### ONTARIO

R.G. Henderson Ltd.  
Toronto 416-422-5580

Choquette CKS

Ottawa 613-739-8458

### QUÉBEC

Choquette CKS  
Montreal 514-722-2000

Choquette CKS  
Québec City 418-681-3944

## HATCO CORPORATION

P.O. Box 340500, Milwaukee, WI 53234-0500 U.S.A.

(800) 558-0607 (414) 671-6350

Parts & Service Fax (800) 690-2966 Int'l. Fax (414) 671-3976

www.hatcocorp.com