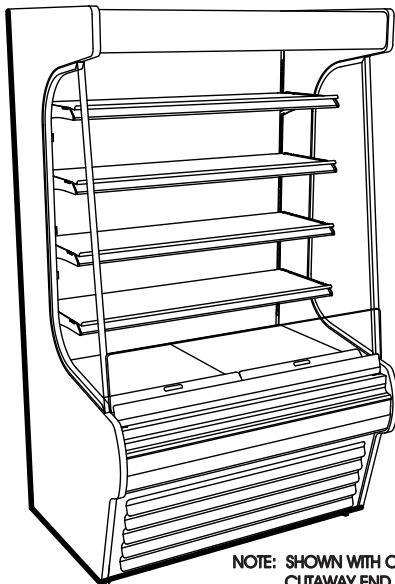




## PRODUCT SPECIFICATIONS

ITEM NO. \_\_\_\_\_  
PROJECT: \_\_\_\_\_  
DATE: \_\_\_\_\_

### Self-Service Refrigerated Merchandiser



NOTE: SHOWN WITH OPTIONAL  
CUTAWAY END PANEL

<input type="checkbox"/> CO3678R	36 1/4"L x 34 3/4"D x 81"H
<input type="checkbox"/> CO4778R	47 1/4"L x 34 3/4"D x 81"H
<input type="checkbox"/> CO5978R	59 1/4"L x 34 3/4"D x 81"H
<input type="checkbox"/> CO7178R	71 1/4"L x 34 3/4"D x 81"H

#### STANDARD FEATURES

- Temp-Integrated average product temperature of 41°F
- Light-T-8 top light(s)
- Evaporator pan-Electric condensate pan (self-contained refig. only)
- Compressor air-Compressor air front intake, rear discharge
- Warranty-One year parts & labor; 1-5 year compressor warranty
- Deck-Removable deck pans provide complete access to evaporator coil & refrigeration connections
- Base-Casters
- Shelves-Shelving removable and adjustable on 1" centers

	STANDARD SPECIFICATION	OPTION(S)
END PANEL COLOR	<input type="checkbox"/> Black exterior	<input type="checkbox"/> Laminated exterior (Wilsonart/Formica premium) <input type="checkbox"/> Laminated exterior (Wilsonart/Formica non-premium) <input type="checkbox"/> Stainless steel exterior
END PANEL EDGE	<input type="checkbox"/> Vinyl end panel edge (matches interior color)	<input type="checkbox"/> Laminated end panel edge (Q4296)
HEADER COLOR	<input type="checkbox"/> Black exterior	<input type="checkbox"/> Laminated exterior (Wilsonart/Formica) <input type="checkbox"/> White exterior <input type="checkbox"/> Painted exterior (specify color) <input type="checkbox"/> Stainless steel exterior
LOWER FRONT PANEL COLOR	<input type="checkbox"/> Black exterior	<input type="checkbox"/> White exterior <input type="checkbox"/> Stainless steel exterior
MISCELLANEOUS	<input type="checkbox"/> None	<input type="checkbox"/> Clean Sweep® coil cleaner
UPPER FRONT PANEL COLOR	<input type="checkbox"/> Black exterior	<input type="checkbox"/> Painted exterior (specify color) <input type="checkbox"/> Laminated exterior (Wilsonart/Formica premium) <input type="checkbox"/> Laminated exterior (Wilsonart/Formica non-premium) <input type="checkbox"/> Stainless steel exterior
UPPER FRONT PANEL STYLE	<input type="checkbox"/> Formed ABS (painted)	<input type="checkbox"/> Straight front panel
UPPER REAR	<input type="checkbox"/> Solid back panel, galvanized	<input type="checkbox"/> Solid rear swinging door(s) w/lock <input type="checkbox"/> Solid back panel, black
INTERIOR COLOR	<input type="checkbox"/> Black interior	<input type="checkbox"/> White interior <input type="checkbox"/> Stainless steel interior
COVER/CURTAIN	<input type="checkbox"/> None	<input type="checkbox"/> Removable solid security cover, locking <input type="checkbox"/> Roll down security cover, locking (inc. ht. 7") <input type="checkbox"/> Night curtain, retractable, non-locking
REFRIGERATION	<input type="checkbox"/> Breeze™ refrigeration	<input type="checkbox"/> Whisper cool compressor blanket (n/a w/Breeze-E) <input type="checkbox"/> Note: Remote does Not include Condensing unit <input type="checkbox"/> Remote w/thermostat, solenoid & TXV <input type="checkbox"/> Breeze-E refrigeration <input type="checkbox"/> Remote w/TXV
END PANEL LEFT	<input type="checkbox"/> Full end panel w/mirror interior	<input type="checkbox"/> Cutaway end panel <input type="checkbox"/> Counter cutaway end panel (Q4292)
END PANEL RIGHT	<input type="checkbox"/> Full end panel w/mirror interior	<input type="checkbox"/> Cutaway end panel <input type="checkbox"/> Counter cutaway end panel (Q4292)
SHELVING	<input type="checkbox"/> Solid shelves, non-lighted	<input type="checkbox"/> Additional solid shelf, lighted (LED) <input type="checkbox"/> Solid shelves, lighted (LED) <input type="checkbox"/> Additional solid shelf, lighted (T-8) <input type="checkbox"/> Additional solid shelf, non-lighted <input type="checkbox"/> Solid shelves, lighted (T-8)



Note: Information is subject to change at any time.

888 E. Porter Rd. Muskegon, MI 49441 Phone: 231.798.8888 Fax: 231.798.4960 www.structuralconcepts.com

## PRODUCT SPECIFICATIONS

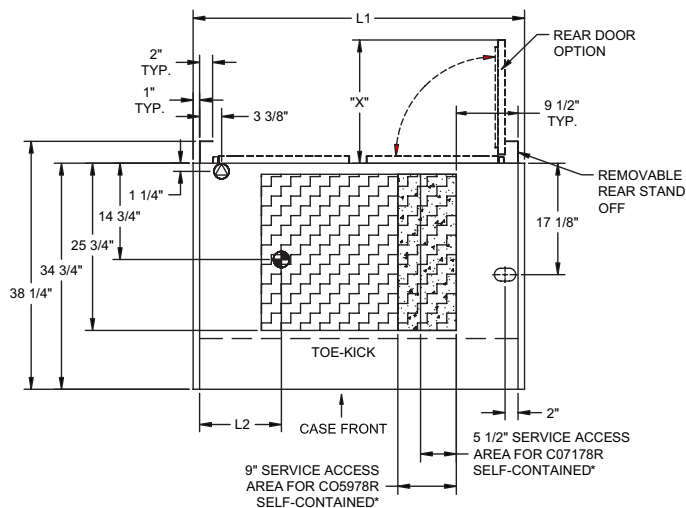
Intended Use of Display Area: Packaged refrigerated products

Integrated Product Temperature (IPT): 41°F

Intended Environment: Designed to operate in ambient conditions of 75°F / 55% relative humidity.

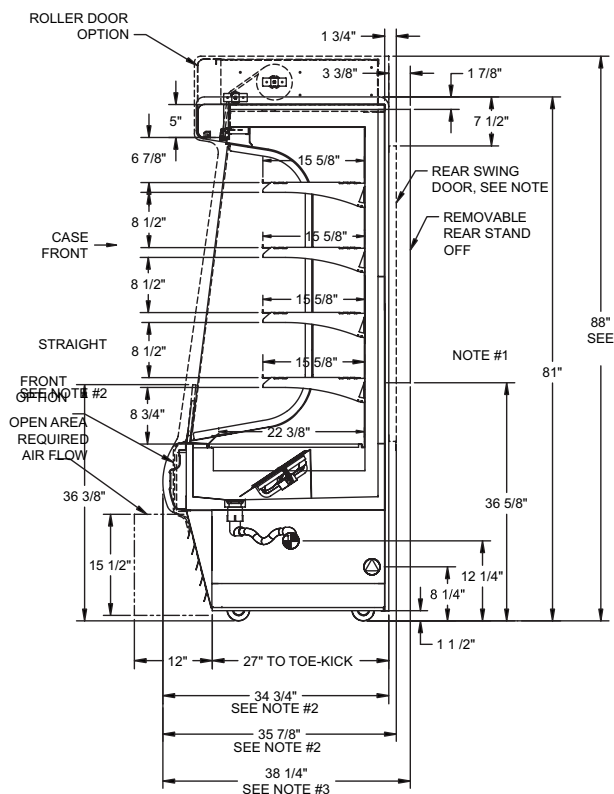
### PLAN VIEW

NOTE: CO3678R - (X) = 30" - (1) DOOR RH HINGED  
CO4778R - (X) = 19" - (2) DOORS RH & LH HINGED  
CO5978R - (X) = 19 5/8" - (2) DOORS RH & LH HINGED  
CO7178R - (X) = 30" - (2) DOORS RH & LH HINGED



\*SELF-CONTAINED MODELS CO3678R & CO4778R  
SERVICE ACCESS AREAS ONLY ACCESSIBLE  
BY PULLING OUT COMPRESSOR UNIT

### SIDE VIEW



1. ROLL DOWN SECURITY DOOR  
INCREASES HEIGHT OF CASE BY 7".

2. STRAIGHT FRONT OPTION DECREASES  
DEPTH OF CASE BY 1 1/2".  
3. DIMENSION INCLUDES REMOVABLE STAND-  
OFF TO ALLOW CASE THROUGH STANDARD  
DOOR OPENING.

#### NOTE: ALL DIMENSIONS APPROXIMATE

- ELECTRICAL JUNCTION BOX  
(SUPPLIED WITH 6" LEADS OR POWER CORD).
- LOCATION OF CONDENSATE DRAIN TUBE  
(SUPPLIED WITH 3/4" OR 1 1/2" PVC DRAIN TUBE).
- REFRIGERATION LINE CONNECTION.
- REMOTE CASE SERVICE ACCESS AREA.
- SELF-CONTAINED CASE SERVICE ACCESS AREA.
- DRY CASE SERVICE ACCESS AREA.

Standard Refrigeration (based on Type I conditions: 75°F, 55% Relative Humidity)												
Self-Contained Refrigeration/Dry							Remote Refrigeration w/Leads					
Model	L1*	L2*	Volts++	Amps (std lights)	Amps (LED lights)	NEMA Plug	Volts	Amps (std lights)***	Amps (LED lights)***	BTUH	Ship Wt	Frt Cls
CO3678R	36 1/4	5 1/8	120/1/60	18.04	16.86	NEMA 5-20 P	120/1/60	3.38	2.2	5306	960	110
CO4778R	47 1/4	11	220/1/60**	15.03	13.85	NEMA 14-20 P	120/1/60	2.93	1.75	7990	1150	110
CO5978R	59 1/4	22 1/2	220/1/60**	16	15.34	NEMA 14-20 P	120/1/60	3.5	2.84	9360	1350	110
CO7178R	71 1/4	18 1/2	220/1/60**	22.07	20.21	NEMA 14-30 P	120/1/60	7.44	5.58	11042	1550	110

Breeze-E Refrigeration (based on Type II conditions: 80°F, 60% Relative Humidity)****												
Self-Contained Refrigeration/Dry							Remote Refrigeration w/Leads					
Model	L1*	L2*	Volts++	Amps (std lights)	Amps (LED lights)	NEMA Plug	Volts	Amps***		BTUH	Ship Wt	Frt Cls
CO3678R	36 1/4	5 1/8	220/1/60**	15.25	14.07	NEMA 14-20 P	120/1/60	3.38		5306	960	110
CO4778R	47 1/4	11	220/1/60**	16.95	15.77	NEMA 14-20 P	120/1/60	2.93		7990	1150	110
CO5978R	59 1/4	22 1/2	220/1/60**	22.02	21.36	NEMA 14-30 P	120/1/60	3.5		9360	1350	110
CO7178R	71 1/4	18 1/2	220/1/60**	23.6	21.74	NEMA 14-30 P	120/1/60	7.44		11042	1550	110

++Operating range for 120 volt rating is 110-120 volts; operating range for 220 volt rating is 208-230 volts.

\*\* Requires 3 wires + ground

\*\*\* Does not include electric defrost on freezer models

\*\*\*\* Energy consumption will be less under Type I conditions; Example: 10% Less on CO5978R

#### REGULATORY APPROVALS

- ETL Listed Certified to CAN/CSA 22.2
- ETL Sanitation Conforms to NSF 7
- ETL Listed Conforms to UL 471
- Rated in Accordance with ARI Standard 1200

#### Important Note:

Compressor air ventilation is out the rear. Unit must remain 4" from the wall and front panel cannot be blocked. Product temperature will be affected if the air curtain is disrupted.

#### Important Note:

Electrical voltage and amperage requirements differ per model.

#### Important Note:

If units are supplied with levelers, they must be adjusted during installation to ensure the unit is level and plumb.

#### Important Note:

This unit includes 3 1/8" removable spacers along the rear. 40 1/4" minimum door entry clearance is required (without shipping skid). 37 7/8" minimum door entry is required if spacers are removed.

Note: Information is subject to change at any time.

888 E. Porter Rd. Muskegon, MI 49441 Phone: 231.798.8888 Fax: 231.798.4960 www.structuralconcepts.com