

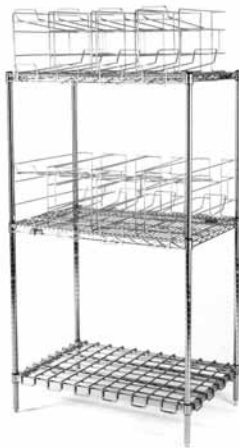
Foodservice Equipment • Material Handling, Healthcare & Cleanroom Equipment • Retail Display

Wire Can Racks and Wire Can Rack Systems



Item #: _____
 Model #: _____
 Project #: _____
 SIS #: _____

Optional Accessories Model #Qty.		



CRC2 can rack system with bottom dunnage shelf



wire can rack

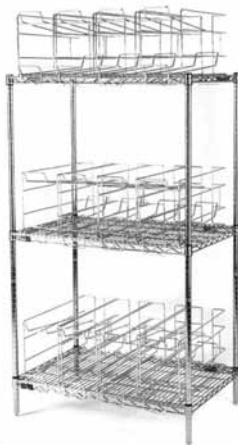


Wire Can Rack

- 7¼"W x 27"D x 11 ½"H (197 x 686 x 292mm) can rack mounts onto 24" (610mm) wide shelves.
- Rack is front loading, front dispensing, gravity fed.
- Made of chrome-plated mild steel and heavy gauge wire.
- Each rack holds eight #10 cans or twelve #5 cans.

Wire Can Rack Systems

- Available in 2-tier, 3-tier, or with bottom dunnage shelf.
- Consists of 24" x 36" (610 x 914mm) wire shelves, four 63" (1600mm) posts, and standard can racks.
- Model #CRC2 features chrome-plated heavy duty dunnage shelf on the bottom.
- All components feature mirror chrome finish.



CRC3 can rack system

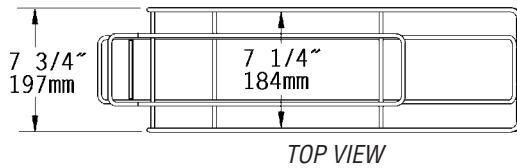


CRC4 can rack system

Spec sheets available for viewing, printing or downloading from our online literature library at www.eaglegrp.com

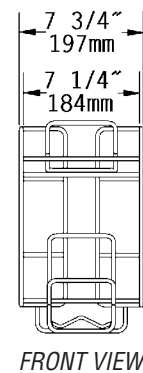
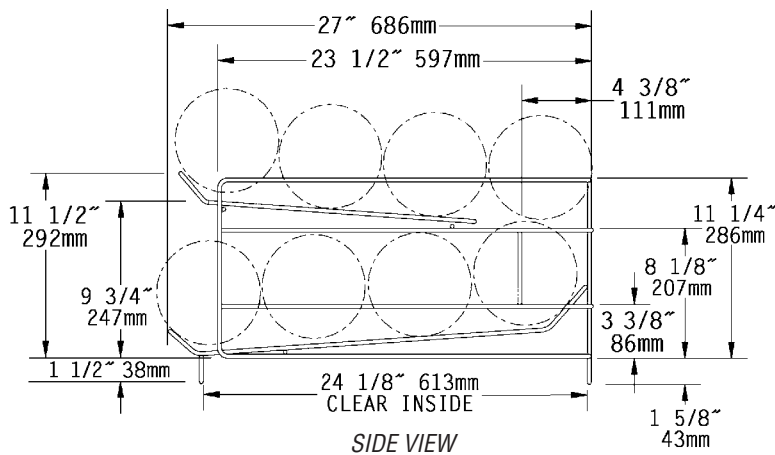
Wire Can Racks and Wire Can Rack Systems

Wire Can Rack

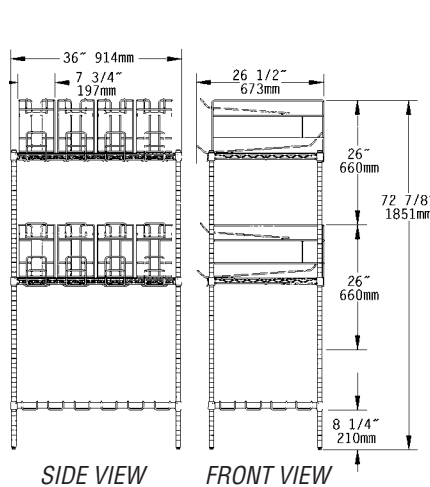


weight	capacity*	model #
lbs.	kg	(#10 cans)
7	3.2	8
		CRC

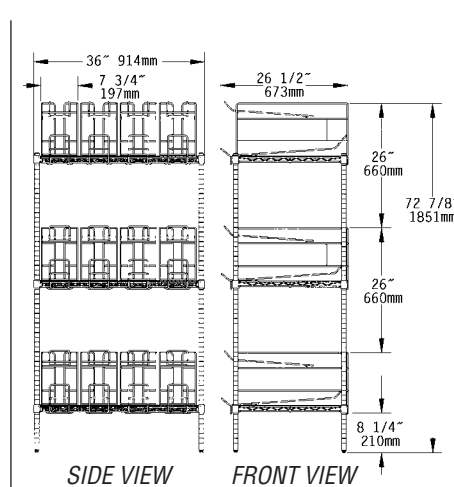
* Holds eight #10 cans or twelve #5 cans.



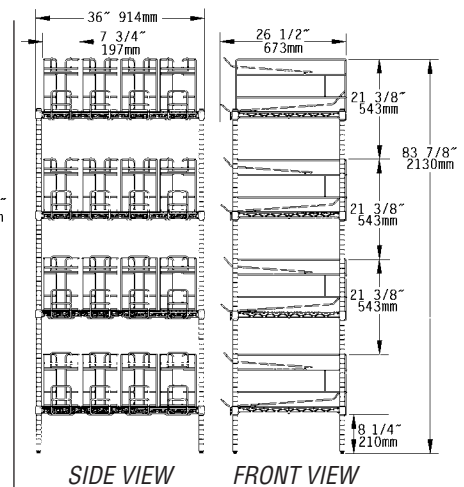
Wire Can Rack Systems



Model #CRC2



Model #CRC3



Model #CRC4

description	weight		capacity (#10 cans)	model #
	lbs.	kg		
wire can rack system with bottom dunnage	120	54.4	124	CRC2*
3-tier with 24" x 36" (610 x 914mm) shelves	137	62.1	96	CRC3
4-tier with 24" x 36" (610 x 914mm) shelves	178	80.7	128	CRC4

* System holds 64 racked cans plus 10 boxes of 6 cans each on the dunnage shelf.