

Foodservice Equipment • Material Handling, Healthcare & Cleanroom Equipment • Retail Display

1800 series
Cocktail Units

Item #: _____ Qty.: _____
Model #: _____ Project #: _____

| Optional Accessories | Model # | Qty. |
|----------------------|---------|------|
| cold plate | | |
| speed rail | | |
| s/s legs | | |
| s/s feet | | |
| | | |
| | | |
| | | |
| | | |



B3CT-18 cocktail unit with optional speed rail shown

- ◆ body is all-welded type 304 stainless steel construction
- ◆ ice bins are deep-drawn, seamless design
- ◆ units are modular, providing for custom configurations using standard components
- ◆ 5" backsplash
- ◆ 4 models to choose from

Spec sheets available for viewing, printing or downloading from our online literature library at www.eaglegrp.com

For custom configuration or fabrication needs, contact our **SpecFAB Division**.
Phone: (302) 653-3000. FAX: (302) 653-3091.
E-mail: specfab@eaglegrp.com

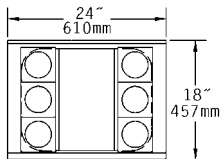
Details & Specifications

- ◆ All units are modular
- ◆ 20 gauge type 304 stainless steel body (front and ends)
- ◆ Insulated deep-drawn seamless design ice bins are available in 60-lb. ice capacity (24" models) and 75-lb. capacity (36" models)
- ◆ Bottom and back panels are galvanized steel construction
- ◆ 5" backsplash
- ◆ Highly polished finish

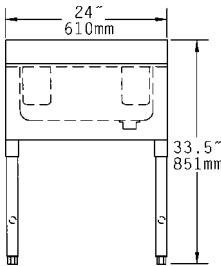
- ◆ Six bottle capacity
- ◆ Welded crossbraced galvanized legs
- ◆ 1½" drain
- ◆ B3 models are NSF approved
- ◆ Cold plates – aluminum casting with 7 stainless steel beverage grade tubing circuits. Cold plates are mounted flush with interior bottom of bowl for easy cleaning and maximum efficiency. Drain is 1½" and located in center of cold plate. ¼" O.D. tubing beverage connection provided.

models without cold plate

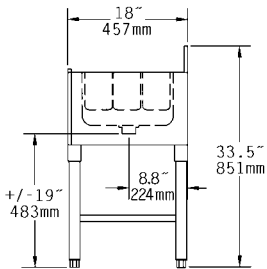
**B2CT-18
(non-NSF)**



top view

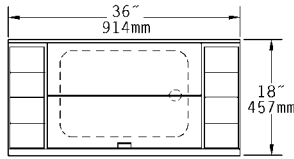


front view

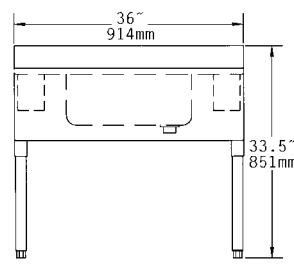


side view

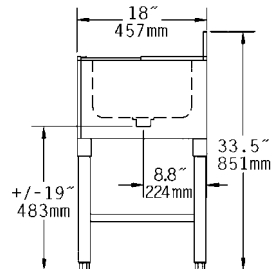
B3CT-18



top view



front view

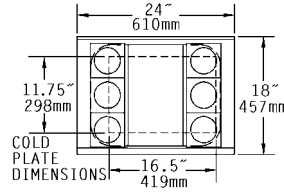


side view

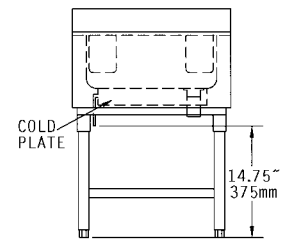
| model number | width x length | | weight | |
|--------------|----------------|-----------|--------|------|
| | in. | mm | lbs. | kg. |
| B2CT-18 | 18" x 24" | 457 x 610 | 58 | 26.3 |
| B3CT-18 | 18" x 36" | 457 x 914 | 70 | 31.8 |

models with cold plate

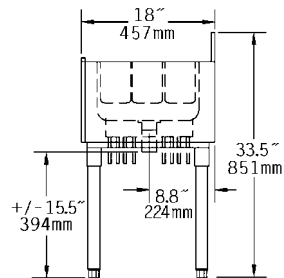
**B2CT-18-7
(non-NSF)**



top view

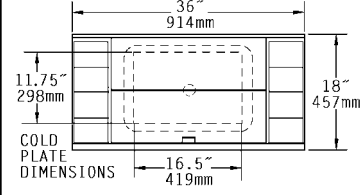


front view

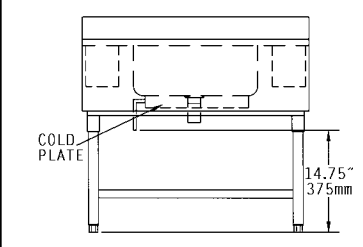


side view

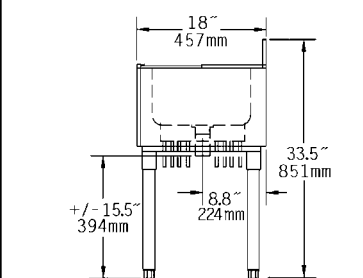
B3CT-18-7



top view



front view



side view

| model number | width x length | | weight | |
|--------------|----------------|-----------|--------|------|
| | in. | mm | lbs. | kg. |
| B2CT-18-7 | 18" x 24" | 457 x 610 | 88 | 39.9 |
| B3CT-18-7 | 18" x 36" | 457 x 914 | 100 | 45.4 |