



DRAWER WARMERS

Models HDW-1, -2, -3, -4 HDW-1N, -2N, -3N HDW-1B, -2B, -3B HDW-1BN, -2BN, -3BN

Hold everything from meat to vegetables to rolls in the Hatco Drawer Warmer. Each Drawer features adjustable sliding vents and individual thermostatic controls to hold a wide variety of hot foods safely for peak serving periods.

FLEXIBILITY

Available in 1-, 2-, 3- and 4-drawer *freestanding* models built of rugged stainless steel with durable nylon rollers, 12 gauge stainless steel slides and heavy-duty hardware. Each drawer has a recessed on/off switch, thermostat, temperature monitor and vent slides to control humidity. Standard 20³/₄" x 12³/₄" x 6" (53 x 32 x 15 cm) pans that lift straight out of standard width units are supplied with each drawer. A larger food pan 15" x 20" x 5" (38 x 51 x 13 cm) with drawer frame is optional. Also available as 1, 2 and 3 drawer *built-in* units and *narrow freestanding* and *built-in* models.

The insulated top and sides of the Hatco Drawer Warmer provide maximum energy efficiency and the heating elements are warranted for two years.

Freestanding units come with 6' (183 cm) cord and plug. A 4' (122 cm) flexible conduit is standard with built-in units.

An optional water/spillage pan and splash baffle are available to create a humidified environment.

QUALITY

The following features assure the finest performance for years to come:

- Available in narrow and standard widths, built-in or freestanding models.
- Each drawer has a recessed individual thermostatic control, temperature monitor, vent slides and on-off switch.
- Heavy-duty drawer slides with nylon rollers and adjustable sliding vents on each drawer.
- Standard 20³/₄" x 12³/₄" x 6" (53 x 32 x 15 cm) pan supplied with each drawer lifts straight out of standard width Drawer Warmers.
- Optional oversized drawer and pan 20" x 15" x 5" (51 x 38 x 13 cm) available.
- Optional heavy-duty casters available for portability.
- Completely insulated individual cavities provide maximum energy efficiency.
- Two-year warranty on heating elements and drawer rollers and slides.



Model HDW-3 with optional casters



Model HDW-2 with optional stainless steel legs

Model GRAHL-36



Model GRSB-30-I with accessory food pans

Model HDW-1BN

Model HDW-1B

METAL SHEATHED HEATING ELEMENTS GUARANTEED AGAINST BURNOUT AND BREAKAGE FOR TWO YEARS.



HATCO CORPORATION P.O. Box 340500 Milwaukee, WI 53234-0500 U.S.A.
(800) 558-0607 • (414) 671-6350 • Fax (800) 543-7521 • Int'l. Fax (414) 671-3976
Web Site: www.hatcocorp.com • E-mail: equipsales@hatcocorp.com

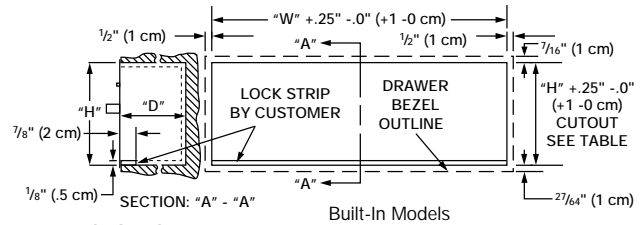
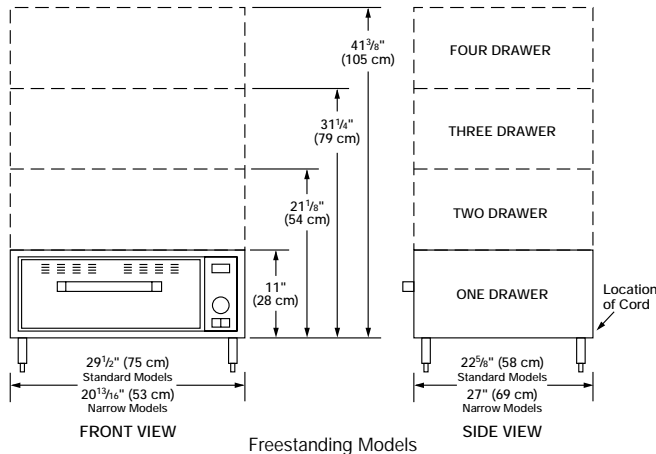
Form No. HDW-1002(S)

Printed in U.S.A.



DRAWER WARMERS

Models HDW-1, -2, -3, -4 HDW-1N, -2N, -3N HDW-1B, -2B, -3B HDW-1BN, -2BN, -3BN



DIMENSIONS

Freestanding – (Without legs or casters)

- HDW-1: 29 1/2" W x 22 5/8" D x 11" H (75 x 58 x 28 cm).
- HDW-1N: 20 13/16" W x 27" D x 11" H (53 x 69 x 28 cm).
- HDW-2: 29 1/2" W x 22 5/8" D x 21 1/8" H (75 x 58 x 54 cm).
- HDW-2N: 20 13/16" W x 27" D x 21 1/8" H (53 x 69 x 54 cm).
- HDW-3: 29 1/2" W x 22 5/8" D x 31 1/4" H (75 x 58 x 79 cm).
- HDW-3N: 20 13/16" W x 27" D x 31 1/4" H (53 x 69 x 79 cm).
- HDW-4: 29 1/2" W x 22 5/8" D x 41 3/8" H (75 x 58 x 105 cm).

Built-in –

- HDW-1B: 28 1/8" W x 22 5/16" D x 9 3/4" H (71 x 57 x 25 cm).
- HDW-1BN: 19 1/2" W x 26 3/4" D x 9 3/4" H (50 x 68 x 25 cm).
- HDW-2B: 28 1/8" W x 22 5/16" D x 19 15/16" H (71 x 57 x 51 cm).
- HDW-2BN: 19 1/2" W x 26 3/4" D x 19 15/16" H (50 x 68 x 51 cm).
- HDW-3B: 28 1/8" W x 22 5/16" D x 30 1/16" H (71 x 57 x 76 cm).
- HDW-3BN: 19 1/2" W x 26 3/4" D x 30 1/16" H (50 x 68 x 76 cm).

Built-in Cutout Requirements

Model	"W" Dimension	"D" Dimension*	"H" Dimension
HDW-1B	28 5/16" (72 cm)	23 3/4" (60 cm)	10 1/8" (26 cm)
HDW-2B	28 5/16" (72 cm)	23 3/4" (60 cm)	20 1/4" (51 cm)
HDW-3B	28 5/16" (72 cm)	23 3/4" (60 cm)	30 3/8" (77 cm)
HDW-1BN	19 5/8" (50 cm)	28 1/8" (71 cm)	10 1/8" (26 cm)
HDW-2BN	19 5/8" (50 cm)	28 1/8" (71 cm)	20 1/4" (51 cm)
HDW-3BN	19 5/8" (50 cm)	28 1/8" (71 cm)	30 3/8" (77 cm)

* Add 1 1/2" (4 cm) for conduit connector.

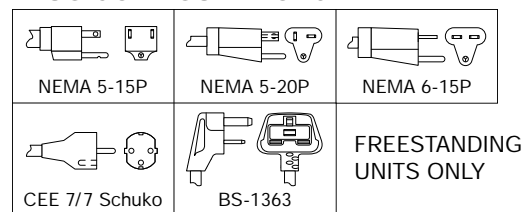
VOLTAGE

120 volts, single phase. Freestanding 1-, 2- and 3-pan models use NEMA 5-15P, 4-pan model uses NEMA 5-15P, 5-20P for Canada. 208 and 240 volts available. Freestanding models use NEMA 6-15P. Export voltages available.

CORD LOCATION

Back of unit, lower left corner.

PLUG CONFIGURATIONS



SPECIFICATIONS

Freestanding – Standard

Model▲	Watts	Amps*	No. of Drawers	Shipping Weight
HDW-1	450	3.8	One	97 lbs. (44 kg)
HDW-2	900	7.5	Two	168 lbs. (76 kg)
HDW-3	1350	11.3	Three	232 lbs. (105 kg)
HDW-4	1800	15.0	Four	296 lbs. (134 kg)

Freestanding – Narrow

Model▲	Watts	Amps*	No. of Drawers	Shipping Weight
HDW-1N	450	3.8	One	97 lbs. (44 kg)
HDW-2N	900	7.5	Two	168 lbs. (76 kg)
HDW-3N	1350	11.3	Three	232 lbs. (105 kg)

Built-in – Standard

Model▲	Watts	Amps*	No. of Drawers	Shipping Weight
HDW-1B	450	3.8	One	88 lbs. (40 kg)
HDW-2B	900	7.5	Two	159 lbs. (72 kg)
HDW-3B	1350	11.3	Three	223 lbs. (101 kg)

Built-in – Narrow

Model▲	Watts	Amps*	No. of Drawers	Shipping Weight
HDW-1BN	450	3.8	One	88 lbs. (40 kg)
HDW-2BN	900	7.5	Two	159 lbs. (72 kg)
HDW-3BN	1350	11.3	Three	223 lbs. (101 kg)

▲ One, two and three drawer freestanding units are standard with 4" (10 cm) legs, four drawer freestanding units with 6" (15 cm) stainless steel legs. Optional 6" (15 cm) stainless legs or 2" (5 cm) or 3" (8 cm) diameter casters available on 1-, 2- and 3-drawer units or 4" (10 cm) diameter casters available on all units.

★ Based on 120 volts.

OPTIONS (NOT FOR RETROFIT)

- Designer Drawer Front Colors: Warm Red, Black, Gray Granite, White Granite, Navy Blue, Hunter Green
- Oversized Drawer Frame and Pan 20" x 15" x 5" (51 x 38 x 13 cm) in lieu of Standard Drawer with Pan (Standard width models only)
- Biscuit Pan Drawer (Accommodates two 18" x 13" Half-size Sheet Pans – not included) in lieu of Standard Drawer with Pan (Standard width models only)
- Chip Guard

ARCHITECT SPECS

Drawer Warmer

The Drawer Warmers shall be a Hatco Model ..., freestanding or built-in as manufactured by the Hatco Corporation, Milwaukee, WI 53234, U.S.A.

The unit shall have ...drawer(s) and be rated at ...watts, ...amps. Freestanding model shall be equipped with a cord and plug and the built-in model with 4" (122 cm) flexible conduit.

HATCO CORPORATION P.O. Box 340500 Milwaukee, WI 53234-0500 U.S.A. • (800) 558-0607 • (414) 671-6350
Fax (800) 543-7521 • Int'l. Fax (414) 671-3976 • Web Site: www.hatcocorp.com • E-mail: equipsales@hatcocorp.com

ACCESSORIES

- 6" (15 cm) Stainless Steel Adjustable Legs
- 2" (5 cm) Diameter Locking Casters (1-, 2- or 3-Drawer Models) – Adds 3 1/4" (8 cm) to Height
- 3" (8 cm) Diameter Locking Casters (1-, 2- or 3-Drawer Models) – Adds 4 1/4" (11 cm) to Height
- 4" (10 cm) Diameter Locking Casters (1-, 2-, 3- or 4-Drawer Models) – Adds 5 1/4" (13 cm) to Height
- Water/Spillage Pan (Splash Baffle recommended)
- Splash Baffle (With Water/Spillage Pan creates humidified environment)
- 20 3/4" x 12 3/4" (53 x 32 cm) Food Pans – 2 1/2", 4" or 6" (6, 10 or 15 cm) deep

The Drawer Warmer shall have a stainless steel exterior, interior, drawer slides and assembly. Drawer rollers shall be durable nylon. The drawer assembly shall fully extend to allow removal of pans without tilting in standard width models. The unit shall be insulated top and sides of cabinet with individual power switch, thermostat and temperature monitor for each drawer.