

# SunFire®

## X Series 60" Gas Restaurant Range

Item: \_\_\_\_\_  
 Quantity: \_\_\_\_\_  
 Project: \_\_\_\_\_  
 Approval: \_\_\_\_\_  
 Date: \_\_\_\_\_

X Series 60" Gas Restaurant Range

### Models:

- X60-10RR       X60-8G12RR       X60-6G24RR  
 X60-4G36RR       X60-2G48RR       X60-G60RR       X60-6G24RS



Model X60-10RR

NOTE: Ranges supplied with casters must be installed with an approved restraining device.

### Standard Features:

- Large 27" (686mm) work top surface
- Stainless steel front and sides
- Stainless steel 4" (102mm) plate rail
- Stainless steel backguard w/ removable stainless steel shelf
- 12" (305mm) section stamped drip trays w/ dimpled bottom
- Durable easy to read control knobs
- Easy to clean 6" (152mm) steel core, injection molded legs
- Pressure regulator, 1" NPT

### Standard on Applicable Models:

- Cabinet base in lieu of oven on 24" griddle model
- Ergonomic split cast iron top ring grates
- 30,000 Btuh/ 8.79 kW 2 piece cast iron "Q" style donut open burner
- 5/8" (15mm) thick steel griddle plate w/manual hi/lo valve control
- 4-1/4" (108mm) wide grease trough
- 20,000 Btuh/5.86 kW cast iron "H" style griddle burner per 12"(305mm) width of griddle
- Straight steel tube oven burner 33,000 Btuh/9.67 kW

- Standard size Sunfire oven w/ ribbed porcelain oven bottom and door interior, aluminized top, sides and back
- Oven thermostat w/ Low to 500° F (260° C)
- Nickel plated oven rack with two fixed position oven rack guides
- Heavy duty oven door w/keep-cool handle

### Optional Features:

- Hot top 12" (305mm) plate, 5/8" (15mm) thick in lieu of two open burners, manual valve controlled w/20,000 Btuh/5.86 kW cast iron burner; standard on left side
- Shelf for cabinet base models
- Low profile 6" (152mm) backguard stainless steel front and sides
- Stainless steel back for backguard
- Additional oven racks
- 6" (152mm) swivel casters (4), w/ front locking
- Flanged deck mount legs
- Celsius temperature dials

### Specifications:

Gas restaurant series range with 2 standard size Sunfire ovens. 59-1/16" (1500mm) wide with a 27" (686mm) deep work top surface. Stainless steel front, sides and 4"(102mm) wide front rail. 6" (152mm) legs with adjustable feet. Ten robust 2 piece 30,000 Btuh/8.797 kW (Natural gas), cast open burners set in split cast iron ergonomic grates. Griddle or optional hot top with cast iron "H" style burners, 20,000 Btuh/5.86 kW (natural gas), in lieu of open burners. Porcelain oven bottom and door liner. Two position fixed rack guide w/one oven rack. Heavy duty oven door with "keep cool" door handle. Straight steel tube oven burner 33,000 Btuh/9.67 kW (natural gas) provides quality bake and good recovery . Oven thermostat ranges from Low to 500° F (260° C). Available with storage base in lieu of oven on 24 inch griddle model.



Garland Commercial Industries, LLC  
 185 East South Street  
 Freeland, PA 18224  
 Phone: (570) 636-1000  
 Fax: (570) 636-3903

Garland Commercial Ranges Ltd  
 1177 Kamato Road,  
 Mississauga, Ontario  
 L4W 1X4 CANADA  
 Phone: 905-624-0260  
 Fax: 905-624-5669

Enodis UK LTD  
 Swallowfield Way,  
 Hayes, Middlesex  
 UB3 1DQ ENGLAND  
 Telephone: 081-561-0433  
 Fax: 081-848-0041

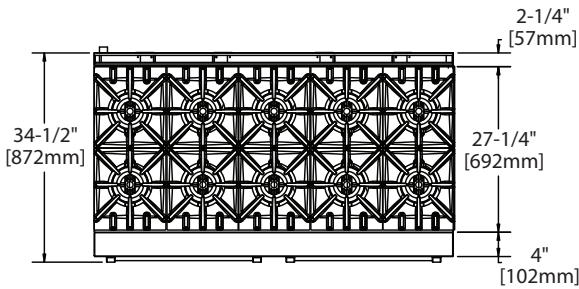
Enodis

| Model Number | Description   | Total BTU/Hr Natural | Shipping Information |     |      |
|--------------|---|----------------------|----------------------|-----|------|
|              |   |                      | Lbs.                 | Kg  | CuFt |
| X60-10RR     | Ten Open Top Burners w/Two Standard Ovens                         | 366,000              | 726                  | 329 | 79   |
| X60-8G12RR   | 12" Griddle, 8 Open Top Burners w/Two Standard Ovens              | 326,000              | 756                  | 343 | 79   |
| X60-6G24RR   | 24" Griddle, 6 Open Top Burners w/ Two Standard Ovens             | 286,000              | 791                  | 359 | 79   |
| X60-6G24RS   | 24" Griddle, 6 Open Top Burners w/ One Standard Oven, One Storage | 253,000              | 755                  | 342 | 79   |
| X60-4G36RR   | 36" Griddle, 4 Open Top Burners w/ Two Standard Ovens             | 213,000              | 826                  | 375 | 79   |
| X60-2G48RR   | 48" Griddle, 2 Open Top Burners w/ Two Standard Ovens             | 206,000              | 851                  | 386 | 79   |
| X60-G60RR    | 60" Griddle, w/ Two Standard Ovens                                | 166,000              | 866                  | 383 | 79   |

| Width In (mm)  | Depth In (mm) | Height w/shelf In (mm) | Oven Interior-in (mm) |          |              | Combustible Wall Clearance-In (mm) |         | Entry Clearances In (mm) |              | Manifold Operating Pressure |                |
|----------------|---------------|------------------------|-----------------------|----------|--------------|------------------------------------|---------|--------------------------|--------------|-----------------------------|----------------|
|                |               |                        | Height                | Depth    | Width        | Sides                              | Rear    | Crated                   | Uncrated     | Natural                     | Propane        |
| 59-1/16 (1500) | 33-1/2 (851)  | 57 (1448)              | 13 (330)              | 22 (559) | 26-1/4 (667) | 12 (305)                           | 6 (152) | 37 (940)                 | 36-1/2 (927) | 4.5" WC<br>11 mbar          | 10"<br>25 mbar |

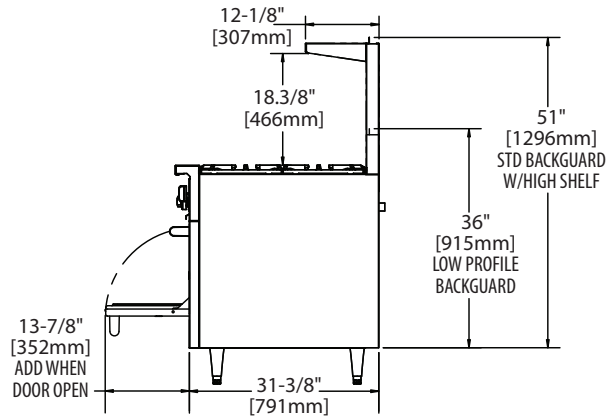
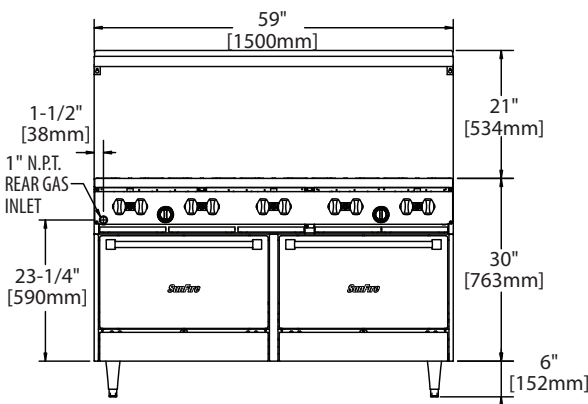
Gas input ratings shown for installations up to 2000 ft.,(610m) above sea level. Please specify altitudes over 2000 ft.

| Burner Ratings (BTU/Hr/kW) |             |                  |               |
|----------------------------|-------------|------------------|---------------|
| Gas Type                   | Open Top    | Griddle/ Hot Top | Standard Oven |
| Natural                    | 30,000/8.79 | 20,000/5.8       | 33,000/9.67   |
| Propane                    | 26,000/6.1  | 19,000/5.56      | 29,000/8.50   |



Note: Installation clearance reductions are applicable only where local codes permit.

This product is not approved for residential use.



Form# X60 Series (01/31/08)

Garland Commercial Industries, LLC  
185 East South Street  
Freeland, PA 18224  
Phone: (570) 636-1000  
Fax: (570) 636-3903

Garland Commercial Ranges Ltd  
1177 Kamato Road,  
Mississauga, Ontario  
L4W 1X4 CANADA  
Phone: 905-624-0260  
Fax: 905-624-5669

Enodis UK LTD  
Swallowfield Way,  
Hayes, Middlesex  
UB3 1DQ ENGLAND  
Telephone: 081-561-0433  
Fax: 081-848-0041

Enodis®