



Project _____
 Item _____
 Quantity _____
 CSI Section 11400 _____
 Approval _____
 Date _____

Shortening Disposal Units

Shortening Disposal Units

Models

PSDU50

PSDU90

PSDU100



PSDU50

Standard Features

- 9-5/8" (24.5 cm) drain height (with cover open) allows unit to fit under most frypots to permit direct draining of oil into unit
- For non-filtered fryers, SDU is filled by use of a frypot drain extension
- Heavy-duty manual pump can empty 50 lbs. (25 liters) of oil in less than 60 seconds
- One-way check valve for easy priming of pump
- New high-strength 6" (15.3 cm) wheels provide easy transporting of oil, even across parking lots; and no lifting is necessary

Options & Accessories

- 24" hose
- 48" hose

Specifications

Specifically designed for safe and easy removal of waste oil from the kitchen

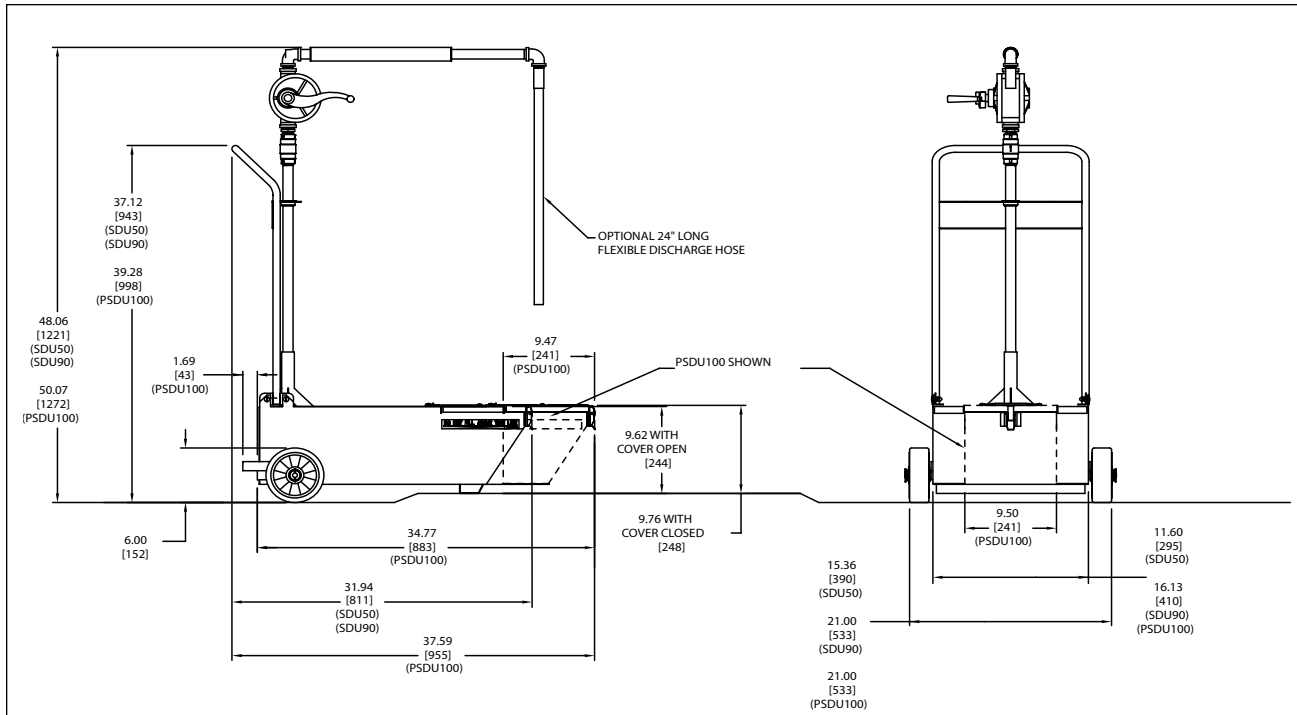
Frymaster provides the answer for the transportation of waste oil from the kitchen to the disposal container, with shortening disposal units, available in 50-, 90- and 100-lb. (25-, 45- and 50-liter) capacities.

The low center of gravity provides stability when transporting or operating the unit. The heavy-duty manual pump is located at a convenient height, and is easy to operate. A one-way check valve allows for easy priming of the pump.

There is no stooping, bending or lifting required to operate the unit. The oil tank has a tight-fitting cover and a secure latch to ensure safe transport without spills. Oil should be cooled to 120° F (49° C) or less for safe, trouble-free disposal.



PSDU100



DIMENSIONS

MODEL NO.	OIL CAPACITY (liters)	ASSEMBLED SIZE (cm)			DRAIN HEIGHT (cm)	NET WEIGHT (kg)	SHIPPING INFORMATION			SHIPPING DIMENSIONS (cm)		
		HEIGHT (cm)	WIDTH (cm)	LENGTH (cm)			WEIGHT (kg)	CLASS	CU. FT.	HEIGHT (cm)	WIDTH (cm)	LENGTH (cm)
PSDU50	50 lbs. (25 liters)	48" (121.9)	15-3/8" (39.1) Overall 11-5/8" (29.5) Tank Only	32" (81.3)	9-5/8" (24.5) w/door open	45 lbs. (20)	62 lbs. (28)	85	10	20" (50.8)	24" (61)	39" (99)
PSDU90	90 lbs. (45 liters)	48" (121.9)	21 (53.3) Overall 16-1/8 (41.0) Tank Only	32" (81.3)	9-5/8" (24.5) w/door open	49 lbs. (22)	67 lbs. (30)	85	10	20" (50.8)	24" (61)	39" (99)
PSDU100	100 lbs. (50 liters)	50" (127)	21 (53.3) Overall 16-1/8 (41.0) Tank Only	37-1/2 (95.3)	9-5/8" (24.5) w/door open	63 lbs. (29)	80 lbs. (36)	85	10	20" (50.8)	24" (61)	39" (99)

SELECT SDU MODEL BY FILTER TYPE AND FRYER CAPACITY

SDU Models	Frymaster Built-in Filtration	Dean Single Fryer Built-in Filtration			Dean Fryer Battery Built-in Filtration		
		For Fryers Up to 50 lbs.	For Fryers 50 to 85 lbs.	For Fryers 85 to 100 lbs.	For Fryers Up to 50 lbs.	For Fryers 50 to 85 lbs.	For Fryers 85 to 100 lbs.
PSDU50	Yes	No	No	No	Yes	No	No
PSDU90	No	No	No	No	Yes	Yes	No
PSDU100	Yes	Yes	Yes	Yes	Yes	Yes	Yes

NOTE:

SDUs are for oil only. Do not run water or boil-out solution through the unit.

8700 Line Avenue
Shreveport, LA 71106-6800
USA

Tel: 318-865-1711
Tel: 1-800-221-4583
Fax: 318-868-5987
E-mail: info@frymaster.com

www.frymaster.com
Bulletin No. 818-0109
Printed 2/08
Revised 4/13/11
Litho in U.S.A. ©Frymaster

