



**COH-2670W**  
**Half Size Convection Oven**

**This manual contains important information regarding your *Admiral Craft* unit. Please read the manual thoroughly prior to equipment set-up, operation and maintenance. Failure to comply with regular maintenance guidelines outlined in this manual may void the warranty. PLEASE READ!!!**

## WARNINGS

- Do not touch any hot surfaces
- Do not put items on top of the oven
- Do not stack ovens
- Plug only into a 3-hole grounded electrical outlet
- Do not immerse unit, cord or plug in liquid at any time
- Unplug cord from outlet when not in use and before cleaning
- Do not operate unattended
- Do not use this unit for anything other than intended use
- Do not use outdoors
- Always use on a firm, dry and level surface at least 12" from walls or any other obstruction
- Do not use if unit has a damaged cord or plug, in the event the appliance malfunctions, or has been damaged in any manner
- Keep children and animals away from unit
- Any incorrect installation, alterations, adjustments and/or improper maintenance can lead to property loss and injury. All repairs should be done by authorized professionals only
- Ensure that the designated power supply is adequate for continual usage and the voltage is correct
- This oven is designed to be used for baking and reheating purposes only.

## TO INSTALL

1. Do not install the oven on the floor.
2. Be sure to install the oven on a flat, sturdy and stable surface. Failure to install on a stable surface may cause the unit to fall over, causing injury or burns.
3. Remove all the adhesive film which covers the body surface before using
4. This unit comes with feet that must be assembled. Do not use the appliance without feet.
5. Screw the support feet to the bottom of the appliance.
6. Adjust the appliance height by screwing or unscrewing the feet themselves.

## TO USE

### *Timer*

- Set the time switch knob to the number which indicates the cooking time required by the food you are going to cook.
- Set the timer by turning it clockwise. The oven will turn off automatically at the end of the selected time and a bell will ring.
- The oven can be turned off manually during cooking by turning the timer counter-clockwise to the "0" position.

### *Convection Cooking*

- Turn on the power to the oven.
- Set the temperature control to the desired temperature (0-570°F).
- Turn the timer to the desired time (0-120min). The temperature light, timer light, and the inside lamp are on.
- The temperature light will switch off when the temperature rises to the desired level. Then it will switch on when the temperature drops down. This process will occur automatically.

**CLEANING – NOTE:** To maintain cleanliness and increase service life, the oven should be cleaned daily. Do not immerse the unit in water or any other liquid. If liquid enters the electrical compartment it may cause a short circuit or electrical shock

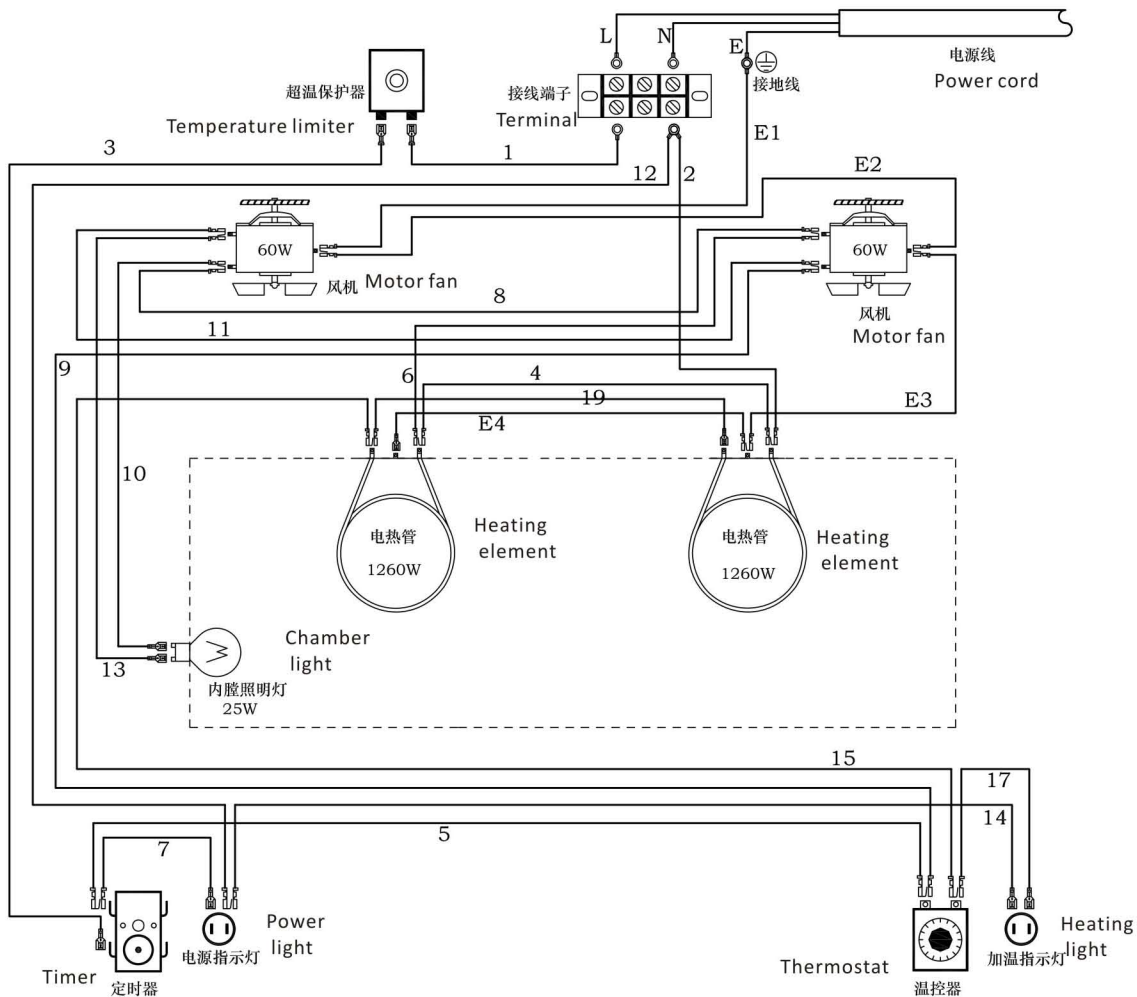
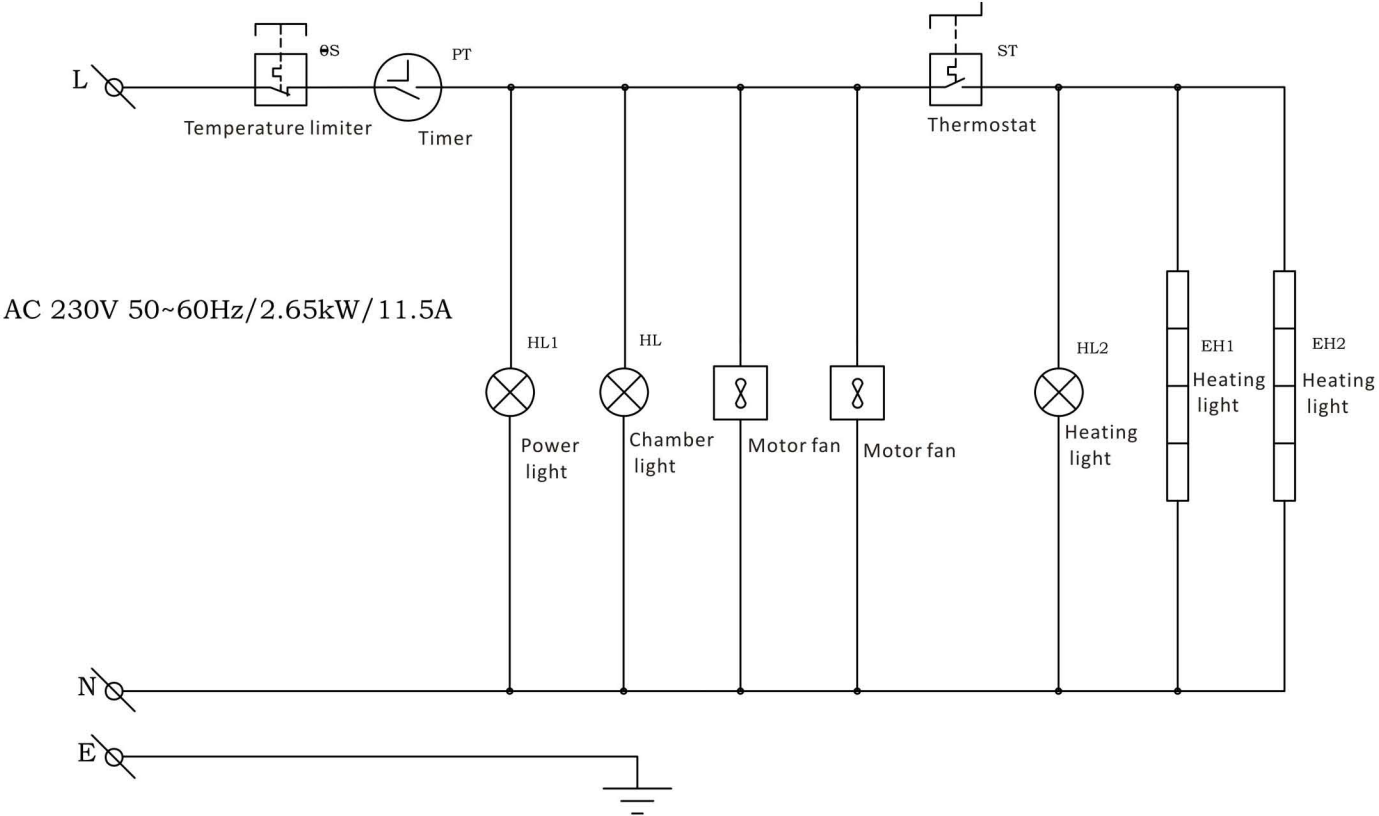
1. When the oven is hot, do not apply water to the glass. This can cause the glass to break.
2. When cleaning the oven do not use combustible solvents
3. To avoid damage, do not use abrasive cleaners or scouring pads.
4. If soap or chemical cleaners are used, be sure they are completely rinsed away with clear water immediately after cleaning. Chemical residue could damage or corrode the surfaces of the unit.

## STORAGE

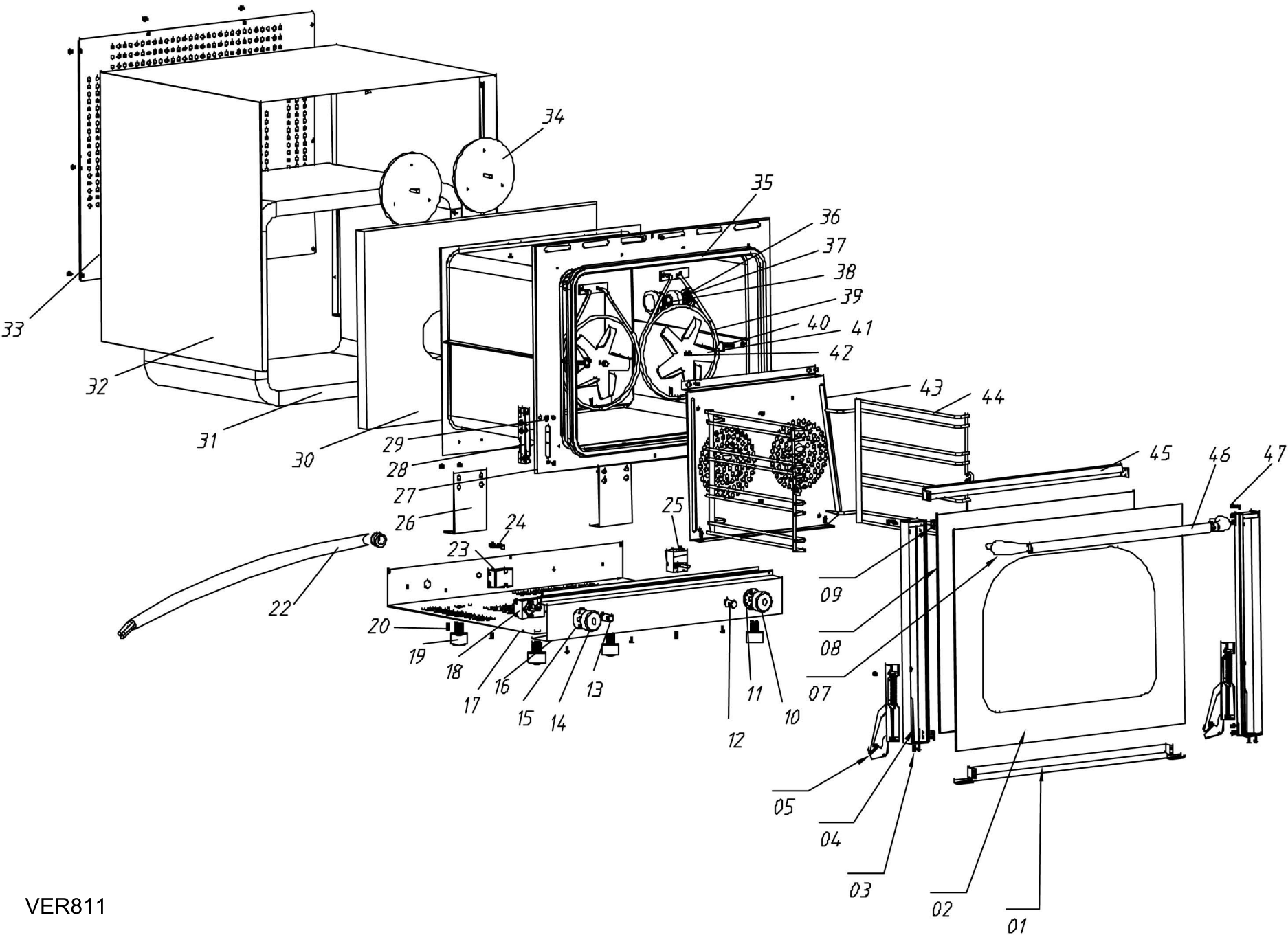
- When not in use, turn off the power switch and disconnect the power cord from the supply.
- Bundle up the power cord and put the bundle on the body.
- If you must move the unit for an extended amount of time, it is recommended that you cover the body with a plastic bag and pack it in a corrugated cardboard box.
- Store it in a location with low humidity.

# Convection oven COH-2670W

## Circuit diagram



COH-2670W



# Half Size Convection Oven - COH-2670W

Reference Number	Part Number	Description
1		Bar
2	COH2-2	Outer Glass
3		S/S Screw
4		Door Post
5	COH2-5	Door Hinge and screw
7		Handle Terminal End
8	COH2-8	Inner Glass
9		S/S Screw
10	COH2-10	Back Heating Element Switch
11	COH2-11	Back Heating Element Switch Base
12	COH2-12	Timer Indicator Light - Green
13	COH2-13	Power Indicator light - Green
14	COH2-14	Timer Switch
15	COH2-15	Timer Switch Base
16		Front Bottom Plate
17		D
18	COH2-18	Timer
19	COH2-19	Foot
20		Crosshead Screw
22	COH2-22	Power Cord and Strain Relief
23	COH2-23	Temperature Limit Controller
24		Earth Screw
25	COH2-25	Thermostat
26		Inner Body Support Rack
27		Inner Body
28	COH2-28	Door Hinge Fixture Rack
29		Crosshead Screw
30		Back Heat Preservation Board
31		Inner Body Heat Preservation Board
32		Outer Shell
33		Back Cover Board
34	COHP-16	Motor
35	COH2-35	Door Gasket
36	COH2-36	Floodlight Base
37	COH2-37	Floodlight
38		Lamp Chimney
39	COH2-39	Heating Element
40		Fixture Screw
41		Wind Blade
42		Fixture Nut of Wind Blade
43	COH2-43	Guide Wind Board
44		Rack
45		Door Bar
46	COH2-46	Door Handle
47		Fixture Screw

## ACE Electrical Equipment One Year Warranty

ACE warrants its equipment against defects in materials and workmanship, subject to the following conditions:

This warranty applies to the original owner only, and is not assignable.

ACE Electrical Equipment is warranted for one year, effective from the date of purchase by the original owner. A copy of the original receipt, or other proof of purchase is required to obtain warranty coverage.

Should any product fail to function in its intended manner under normal use within the limits defined in this warranty, at ACE's discretion, such product will be repaired, replaced with a refurbished unit, or replaced with a new unit by ACE, after defective unit has been inspected and defect has been confirmed. ACE does not assume any liability for extended delays in replacing any item beyond its control. This warranty does not apply to rubber and non-metallic synthetic parts where usage, wear, or lack of preventative maintenance may create abnormal replacement rates, and these parts are excluded from this limited warranty.

This warranty covers products shipped into the 48 contiguous United States, Hawaii, and metropolitan areas of Alaska and Canada. Warranty coverage on products used outside the 48 contiguous United States, Hawaii and metropolitan areas of Alaska and Canada may vary. Contact ACE for details at 1-800-223-7750

The following conditions are not covered by warranty:

- Equipment failure relating to improper installation, improper utility connection or supply and problems due to improper ventilation.
- Equipment that has not properly been maintained, damage for improper cleaning, and water damage to controls.
- Equipment that has not been used in an appropriate manner, or has been subject to misuse, neglect, abuse, accident, alteration, negligence, damage during transit, delivery or installation, fire, flood, riot, or act of God.
- Equipment that has the model number or serial number removed or altered.
- Equipment on which the security seal has been broken.

If the equipment has been changed, altered, modified, or repaired without express written permission from ACE, then the manufacturer shall not be liable for any damages to any person or to any property, which may result from the use of this equipment thereafter.

This equipment is intended for commercial use only. Warranty is void if equipment is used in other than a commercial application.

In the event your repair is not covered under the stated warranty provisions, parts are available by calling 1-800-223-7750. Equipment not covered by repair should be picked up from our warehouse facility within 10 business days from notification date. Any and all arrangements and expenses for the return of this merchandise is your responsibility.

**"THE FOREGOING WARRANTY IS IN LIEU OF ANY AND ALL WARRANTIES EXPRESSED OR IMPLIED INCLUDING ANY IMPLIED WARRANTY OF MERCHANTABILITY OR FITNESS FOR PARTICULAR PURPOSES AND CONSTITUTES THE ENTIRE LIABILITY OF ACE. IN NO EVENT DOES THE LIMITED WARRANTY EXTEND BEYOND THE TERMS STATED HEREIN."**