

PRODUCT TECHNICAL DATA
Premium Tomato & Food Products

P.O. BOX 83 • ELWOOD, IN 46036 • TEL. (765) 557-5500 • FAX (765) 557-5501 • www.redgold.com



VA35

Revision Date
 01/04/13

TOMATO JUICE
FROM CONCENTRATE, 5.5 OZ
 NET 5.5 FL. OZ. (163mL)

Nutrition Facts	
Serving Size 5.5 fl oz (163mL)	
Servings Per Container 1	
Amount Per Serving	
Calories 30	Calories from Fat 0
% Daily Value*	
Total Fat 0g	0%
Saturated Fat 0g	0%
Trans Fat 0g	
Cholesterol 0mg	0%
Sodium 410mg	17%
Potassium 290mg	8%
Total Carbohydrate 7g	2%
Dietary Fiber 1g	4%
Sugars 4g	
Protein 1g	
Vitamin A 15%	Vitamin C 10%
Calcium 0%	Iron 2%
* Percent Daily Values are based on a 2,000 calorie diet. Your Daily Values may be higher or lower depending on your calorie needs.	
Calories: 2,000 2,500	
Total Fat	Less than 65g 80g
Sat Fat	Less than 20g 25g
Cholesterol	Less than 300mg 300mg
Sodium	Less than 2,400mg 2,400mg
Total Carbohydrate	300g 375g
Dietary Fiber	25g 30g

LABELING AREA

<40 in²

ADD %DV FOOTNOTE

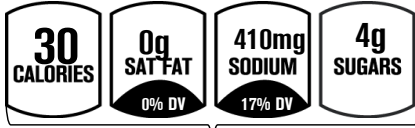
No

LABEL DIMENSIONS (WxH)

7"x3-9/16"

includes 1/2" left hand lap

PER 5.5 FL.OZ. SERVING



BASIC ICONS



SUGGESTED
 OPTIONAL ICONS

INGREDIENT DECLARATION

Tomato Juice From Concentrate (Water, Tomato Concentrate), Salt, Citric Acid.

MUST BE ADDED:

- "100% Tomato Juice" or "100% Juice" must be placed above the information panel. Name of Product or UPC Code is the only information that can be placed above this % of juice statement.
- The statement "From Concentrate" must appear on the principle display panel under the name of the product. Type size must be no less than 1/2 the size of the product name.
- Pasteurized claim.
- Chill and Shake Well Before Serving
- To Maintain Freshness, Refrigerate After Opening and Store in a Sealed Glass or Plastic Container

HIGHLY RECOMMENDED TO BE ADDED:

- Put "ME 5 Cent REFUND" on the lid of the can, if it is not on the lid put it on the label.
- We suggest "Shake Before Serving" be put on the label.
- Refrigerate After Opening statement

OPTIONAL TO BE ADDED:

- Lycopene Statement --> Front Panel: 15mg Lycopene per serving See Nutrition Information for Sodium Content
- Labeling Potassium content is not required per FDA regulations and is left to the discretion of the customer unless you use a Potassium optional icon, then the Potassium must be present in the Nutrition Fact panel.