

Project	Quantity	Item #
Model Specified:		CSI Section 11400

### Spacesaver Refrigerator Models/ Self-Contained



Model UR30HT-16  
(shown with optional casters)

### One & Two Section Reach-In Models, 24" Deep



#### Solid Door Models

- UR30HT-16 30" Wide Model Door Hinged Right
- UR30HT-17 30" Wide Model Door Hinged Left
- UR48HT-55 48" Wide Model Doors Hinged Left/Right

#### Glass Door Models

- UR30HT-22 30" Wide Model Door Hinged Right
- UR30HT-23 30" Wide Model Door Hinged Left
- UR48HT-57 48" Wide Model Doors Hinged Left/Right

The Spacesaver product line was designed for use in a variety of applications where both narrow width and shallow depth are required. Their compact footprints are 24" deep by either 30" or 48" wide. They are ideal for front-of-house applications, can be built in, or installed freestanding on legs, casters, or a finished base.

All models are available with either stainless steel or clear glass doors and two refrigerated drawers underneath (per section).

Choose from among several optional accessories to complete your Traulsen Spacesaver, such as additional shelves, or even a finished stainless steel base.

### Standard Features

- Stainless Steel Exterior And Interior
- ¾ Height Stainless Steel or Hinged Glass Doors With Locks Above Two Drawers (per section)
- Exterior Mounted Digital Thermometer
- Adjustable Heavy Duty Chrome Plated Shelves
- Magnetic Snap-In Door Gaskets
- Guaranteed For Life Stainless Steel Horizontal Work Flow Door Handles - (solid doors only)
- Guaranteed For Life Door Hinges
- Self-Closing & Stay Open Door Features
- Stainless Steel Breaker Caps
- Energy Saving Defogger Control
- Automatically Activated Interior Incandescent Lights
- Set Of Four (4) 6" High Stainless Steel Adjustable Legs
- One Piece Lift-Up Louver Assembly
- Automatic Condensate Removal System
- Cord and Plug Attached
- 1 Year Parts And Labor Warranty
- 5 Year Compressor Warranty

### Optional Accessories for 30" Models<sup>1</sup>

- URACC-SHLF30: One Additional Chrome Plated Shelf
- URACC-WINE30: One Stainless Steel Wine Rack
- URACC-BASE30: 4½" High Flush Stainless Steel Base
- URACC-CK1: Set of Four (4) 6" High Casters

### Optional Accessories for 48" Models<sup>1</sup>

- URACC-SHLF48: One Additional Chrome Plated Shelf
- URACC-WINE48: One Stainless Steel Wine Rack
- URACC-BASE48: 4½" High Flush Stainless Steel Base
- URACC-CK1: Set of Four (4) 6" High Casters

#### NOTES:

1= All accessories require field installation.



Listed by Underwriters Laboratories Inc., to U.S. and Canadian safety standards and Listed by NSF International.

Approval: \_\_\_\_\_



TRAUlsen  
4401 BLUE MOUND RD.  
PHONE 1 (800) 825-8220  
Website: www.traulsen.com

FT. WORTH, TX 76106  
FAX-MKTG. 1 (817) 624-4302

Project	Quantity	Item #
Model Specified:		CSI Section 11400

### Specifications

#### Construction, Hardware and Insulation

Unit exterior sides, front, door and interior are constructed of heavy gauge stainless steel. Exterior top, back and bottom are constructed of heavy gauge aluminized steel. Door is equipped with guaranteed for life cam lift, gravity-action, metal glide hinges with stay open feature at 120°. Guaranteed for life, work flow handle is mounted horizontally over recess in door which limits protrusion from door face into aisle ways. Cylinder door locks are provided standard. On models equipped with optional drawers, these are supplied with two removable anodized aluminum pans per drawer.

Easily removable for cleaning, vinyl magnetic gasket assures tight door seal. Anti-condensate heaters are located behind each door opening.

Cabinet and door contain high density, non-CFC, foamed in place polyurethane insulation.

All models are supplied standard with a set of four (4) 6" high adjustable stainless steel legs.

DIMENSIONAL DATA	UR30HT	UR48HT
Net Capacity - cu. ft.	17.9 (455 cu l)	31.6 (894 cu l)
Length - Overall in.	29 <sup>7</sup> / <sub>8</sub> (75.9 cm)	48 (121.9 cm)
Depth - Cabinet Only in.	24 (61 cm)	24 (61 cm)
Depth - with Door Open 90° in.	49 <sup>5</sup> / <sub>8</sub> (126 cm)	45 <sup>5</sup> / <sub>8</sub> (115.9 cm)
Depth - Overall in.	27 (68.5 cm)	27 (68.5 cm)
Clear Door Width in.	21 <sup>1</sup> / <sub>2</sub> (54.6 cm)	17 <sup>5</sup> / <sub>8</sub> (44.8 cm)
Clear 3/4 Door Height in.	39 <sup>3</sup> / <sub>4</sub> (100.9 cm)	39 <sup>3</sup> / <sub>4</sub> (100.9 cm)
Height - Overall on 6" Legs in.	83 <sup>1</sup> / <sub>4</sub> (211.5 cm)	83 <sup>1</sup> / <sub>4</sub> (211.5 cm)
Height - Overall on 4 <sup>1</sup> / <sub>2</sub> " Base in.	81 <sup>3</sup> / <sub>4</sub> (207.6 cm)	81 <sup>3</sup> / <sub>4</sub> (207.6 cm)
Number of Shelves	5	10
Shelf Area - sq. ft.	15.8 (1.5 sq m)	34 (3.2 sq m)
<b>ELECTRICAL DATA</b> (at 115/60/1)		
Voltage	115/60/1	115/60/1
Feed Wires with Ground	3	3
Full Load Amperes	4.4	7.8
Wattage <sup>1</sup>	354	531
<b>REFRIGERATION DATA</b>		
Refrigerant	R-134a	R-134a
BTU/HR - HP <sup>2</sup>	848 (1/8 HP)	2331 (1/8 HP)
<b>CARTON DIMENSIONS</b> Domestic Crated Only		
Length - crated in.	35 (88.9 cm)	63 (160 cm)
Depth - crated in.	43 (109.2 cm)	43 (109.2 cm)
Height - crated in.	85 <sup>1</sup> / <sub>4</sub> (216.5 cm)	85 <sup>1</sup> / <sub>4</sub> (216.5 cm)
Volume - crated cu. ft.	71 (2010 cu l)	131 (3711 cu l)
<b>WEIGHT DATA</b>		
Net Weight - uncrated lbs.	340 (154 kg)	450 (204 kg)
Gross Weight - crated lbs.	430 (195 kg)	550 (249 kg)

#### NOTES

NOTE: Figures in parentheses reflect metric equivalents.

1= Wattage is determined by listed amps X listed volts X an average run time of 70% for refrigerators and 80% for freezers.

2= Based on a 90 degree F ambient and 20 degree F evaporator.



Supplied With One NEMA 5-15 P Plug

NOTE: When ordering please specify: Voltage, Hinging, Door Size, Options and any additional warranties. For fast order entry: Fax 1 (800) 765-8728.

Continued product development may necessitate specification changes without notice. Part No. TR35816 (revised 11/09)

#### Refrigeration System

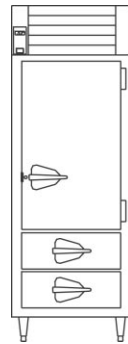
A balanced, top-mounted refrigeration system using R-134a refrigerant is located behind a one piece louver assembly for easy access. Automatic condensate removal is provided through use of a bottom mounted electric condensate evaporator. Standard operating temperature is 34-38° F.

#### Interior

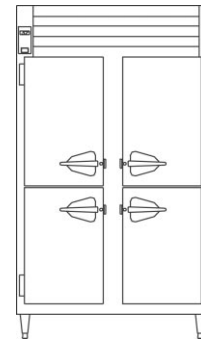
Models UR30HT and UR48HT are supplied with a standard compliment of five (5) chrome plated shelves per section.

#### Warranties

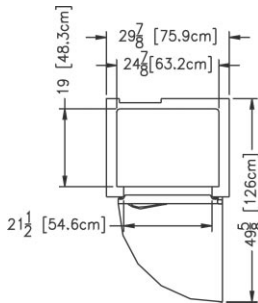
The standard warranty is a five year compressor warranty and a one year parts and labor warranty on all components and the cabinet. Additional warranties are available at extra cost.



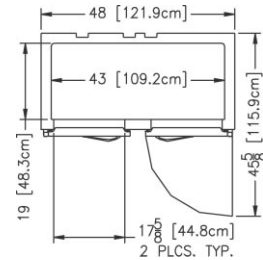
Elevation - UR30HT



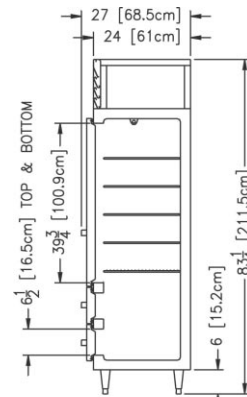
Elevation - UR48HT



Plan - UR30HT



Plan - UR48HT



Section - All Models

TRAULSEN  
4401 BLUE MOUND RD.  
PHONE 1 (800) 825-8220  
Website: www.traulsen.com

FT. WORTH, TX 76106  
FAX-MKTG. 1 (817) 624-4302

