

# Set-up Stations

## Mobile Stainless Steel



Model 4608  
(Shown in Victorian  
Cherry finish)



Model 4605

Compartment for touchscreen terminal has clear top shield for protection from elements.

### Add Organization And Enhance The Appearance Of Dining Areas

#### Benefits

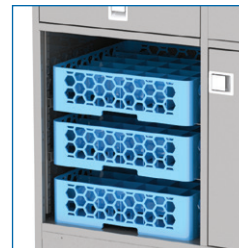
- Add attractive service functionality to patios and indoor dining areas
- Easy mobility to provide dining room flexibility

#### Features

- Stainless steel welded construction
- Choice of stainless steel or laminate exterior finishes
- Concealed casters provide built-in look
- Utility drawer holds flatware and other set-up items
- Open and concealed storage for supplies and computer terminal

#### Casters

- All-swivel 5" cushion tread



Open compartment option  
(door removed)

#### Specifications:

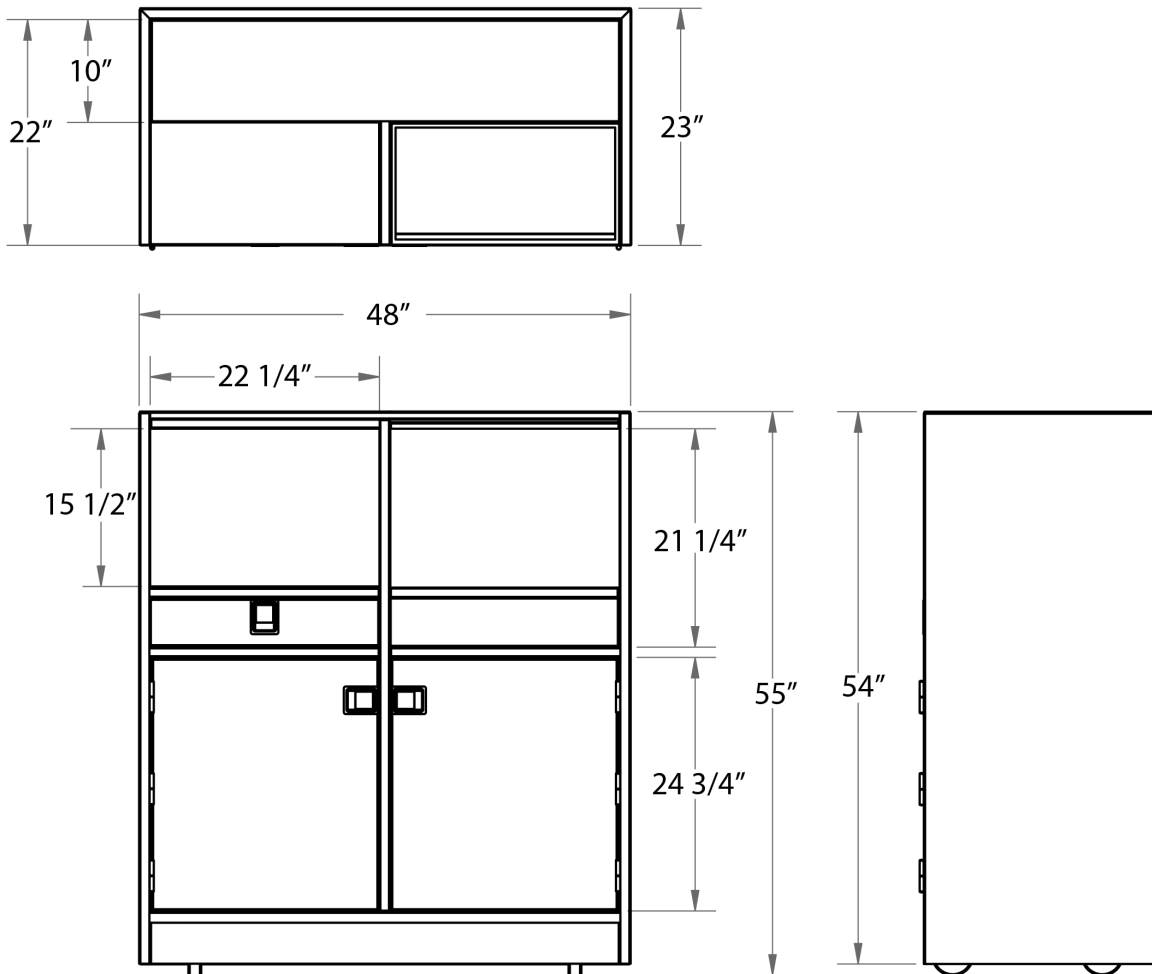
Unit shall be of welded stainless steel construction and shall have 20-gauge sides and 18-gauge top and doors. Lower compartment floors shall be 18-gauge stainless steel. Lower compartments shall have three sets of height-adjustable (1" increment) universal ledges. Upper right open compartment shall have a 6" high front panel to house a computer terminal and a clear plexiglass top shield to provide protection from elements. Hinged lower compartment doors shall have recessed paddle latch. 5" all-swivel casters with cushion tread wheels shall be recessed/hidden and shall be fastened to a galvanized steel dolly frame for extra strength.

Spec. # \_\_\_\_\_

AIA # \_\_\_\_\_

# Set-up & Bussing Stations

## Mobile Stainless Steel



Spec. #

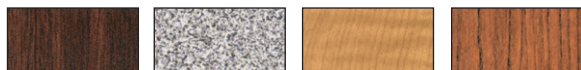
AIA #

### Product Information:

Model	Overall Size			Top Compartment (R)			Top Compartment (L)			Lower Compartments			Exterior Finish	Case Wt. Lbs. (Kg)
	W	D	H	W	D	H	W	D	H	W	D	H		
4605	48"	23"	55"	22 1/4"	22 1/4"	15 1/2"	22 1/4"	22 1/4"	21 1/4"	22 1/4"	21 3/4"	24 3/4"	Stainless Steel	389 (176)
	(1219)	(584)	(1397)	(565)	(565)	(394)	(565)	(565)	(540)	(565)	(552)	(629)		
4608	48"	23"	55"	22 1/4"	22 1/4"	15 1/2"	22 1/4"	22 1/4"	21 1/4"	22 1/4"	21 3/4"	24 3/4"	Laminate	396 (180)
	(1219)	(584)	(1397)	(565)	(565)	(394)	(565)	(565)	(540)	(565)	(552)	(629)		

Dimensions in ( ) denote metric millimeters, unless otherwise noted.

### Available Laminate Finishes



Walnut     Gray Sand     Light Maple     Victorian Cherry



Beige Suede     Hard Rock Maple     Red Maple     Red     Green     Black     Royal Blue     Purple

### Options:

- Leveling feet (in place of casters)
- 6" wide tread casters
- Open lower compartment(s)



Lakeside Manufacturing, Inc.  
 4900 West Electric Avenue • West Milwaukee, WI 53219 U.S.A.  
 800-558-8565 • 414-902-6400 • Fax 414-902-6446 • www.eLakeside.com