



Spring Fever... Specials

Call Today 800-444-3595
fax: 516-921-0538

Pan Racks All Welded



Model AL-1820B

Heavy duty aluminum frame with welded angle slides, 3" spacing between runners. 5" polyurethane swivel stem casters.

Capacity of 20 - 18" x 26" sheet pans

Dimensions: 21"W x 26"L x 69¾"H



NEW

Model AL-1820B/XB

Extra heavy duty with reinforced uprights.

Heavy duty aluminum frame with welded angle slides, 3" spacing between runners. 5" polyurethane swivel stem casters.

Capacity of 20 - 18" x 26" sheet pans

Dimensions: 21"W x 26"L x 69¾"H

Pan Racks Knock-down



Economy Model ADE1820B/KDA

All-welded 1" aluminum construction, 3" spacing between runners. Capacity of 20 - 18" x 26" sheet pans. 5" swivel stem casters with polyolefin wheels. Dimensions: 21"W x 26"L x 69"H

Economy Model ADE1812B/KDA

All-welded 1" aluminum construction, 5" spacing between runners. Capacity of 12 - 18" x 26" sheet pans. 5" swivel stem casters with polyolefin wheels. Dimensions: 21"W x 26"L x 69"H

Heavy Duty Model AL-1820BKD/HD

All-welded 1" aluminum construction, 3" spacing between runners. Capacity of 20 - 18" x 26" sheet pans. 5" swivel stem casters with polyurethane wheels. Dimensions: 21"W x 26"L x 69"H

Rack Covers



Model SRC-58/3Z

Clear Vinyl

Dimensions: 23"W x 28"L x 61"H





Spring Fever... Specials

Call Today 800-444-3595
fax: 516-921-0538

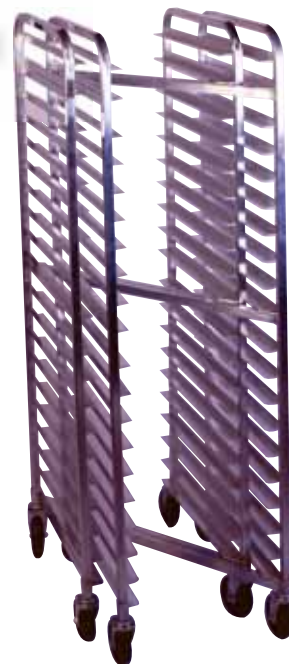
Nesting Pan Racks

Model AL-1820N

Heavy duty aluminum frame with welded angle slides. 5" polyurethane swivel stem casters.

Dimensions: 21"W x 26"L x 70"H

Capacity of 20 - 18" x 26" sheet pans



Enclosed Mobile Cabinet

Model EC1840-C

All welded, reinforced, non-insulated aluminum. Double pan construction with reinforced braces, 1½" spacing between runners. Easily maneuverable on four 5" polyurethane, swivel plate, double ball race casters.

40 pan capacity 18" x 26".

Dimensions: 21"W x 27"L x 68"H



Insert Racks



Knock-down, constructed of rustproof, all welded aluminum with 1-1/2" wide angle slides. Designed to hold 18" x 26" & 14" x 18" trays. Ships knock-down.

Model AL-1816-IR-KD

Dimensions: 20^{3/8}" W x 24"L x 51"H



Model AL-1807-IR-KD

Dimensions: 20^{3/8}" W x 24"L x 23"H

Valid on all orders placed & shipped 4/1/2011 - 6/30/2011
Minimum Order: \$200

Heater Proofer



All Models

Air baffle and circulating air blower provide even heat distribution. Clear Lexan Door. Easy dual proof/heat control: "Proof" mode: Humidity from 30% to 95%. Temperatures up to 115°F (46°C) "Heat" mode: Nominal Temperatures up to 185°(85°C) Electrical: 120 VAC-60 Hz., 14 amps - Standard 110 outlet.

Insulated Heater Proofer

35% ENERGY SAVINGS!

Model INHPL-1836

Insulated, bumpers

Pan Capacity: 35 - 18" x 26"

Dimensions: 21^{1/2}"W x 32"L x 66^{3/4}"H



Universal Runner Heater Proofer

Model NHPL-1825-UN

Non- Insulated Unit. Removable chrome pan slides for variable spacing, field reversible door for right or left hanging. 25 pan slides hold a variety of pan configurations from sheet pans to steam table pans.

Dimensions: 24"W x 32"L x 70"H



Economy Heater Proofer

Model NHPL-1836-ECO

Non-Insulated Pan Capacity: 35 - 18" x 26"

Dimensions: 21^{1/2}"W x 31^{1/4}"L x 69^{1/2}"H



Under Counter Heater Proofer

Model NHPL-1810/HH

Non-Insulated with Poly top workstation, bumpers.

Pan Capacity: 10 - 18" x 26"

Dimensions: 21^{1/2}"W x 32" L x 30^{2/3}"H



Standard Heater Proofer

Model NHPL-1836

Bumpers, Non- Insulated

Pan Capacity: 35 - 18" x 26"

Dimensions: 21^{1/2}"W x 31^{1/4}"L x 69^{1/2}"H





Spring Fever... Specials

Call Today 800-444-3595
fax: 516-921-0538

Lug Carts & Lugs

Constructed of rustproof, all welded aluminum. Holds 1 Lug. Maneuvers easily on (4) 5" heavy duty polyurethane swivel stem casters.



Model	Cap.	Dimensions
AL-L-1	1 Lug	16"W x 25"L x 19"H

Cup, Glass & Plate Dollies



All welded aluminum dolly rolls on 5" polyurethane swivel plate casters.

Model D-2020

Dimensions: 21 1/2"W x 21 1/2"L x 8 1/8" H Capacity 600lbs



Model D-2040/LD

Dimensions: 21 1/2"W x 41 1/2"L x 8 1/8" H Capacity 600lbs

Ice Caddy & Scoop

Model IC-S

Plastic Ice Scoop

Dimensions: 4 3/4"W x 11"L x 4 3/8"H

Polyethylene construction. Thick polyurethane foam insulation, holds up to 125 lbs of ice, faucet allows for drainage.



Model IC-125BK

Dimensions: 24"W x 31"L x 29"H

Unit available in BLACK

Ingredient Bin Triple

Lugs (see lug in unit to left)

Model WHPL-8GY

Dimensions: 16"W x 25"L x 8"H



Model 148PIB

Bins are one-piece, sanitary polyethylene with clear plastic covers. Frame is constructed of all welded aluminum. 5" polyurethane swivel stem casters.

Dimensions: 17"W x 31 1/2"L x 28 3/4"H

Capacity per bin: 55lb flour or 75lb sugar



Valid on all orders placed & shipped 4/1/2011 - 6/30/2011
Minimum Order: \$200

Can Racks



Vertical uprights and cross braces are constructed of 1½" aluminum tubing. Mobile units have two 5" locking swivel and two 5" rigid polyurethane plate casters.



Model CR-162

Holds 162 #10 cans, 216 #5 cans.
Dimensions: 25¼"W x 35"D x 71"H



Model CR-162M

Mobile unit Holds 162 #10 cans, 216 #5 cans.
Dimensions: 27½"W x 35"D x 76"H



Model CR-72SS

Stainless steel top/Mobile unit
Holds 72 #10 cans, 96 #5 cans.
Dimensions: 27½"W x 35"D x 40"H



Spring Fever...

Blow Out Inventory



Model PUC-2436/2S

Qty 102 FOB PA
Qty 120 FOB TX

Two shelf plastic utility cart, ships Knock down for extra savings!

Dimensions:
40"W x 24½"L x 32½"H

ONLY WHILE SUPPLIES LAST!



Model DTS-2430

Qty 35 FOB CA

Stainless steel Tablewith undershelf.

Dimensions:
24"W x 30"L x 34"H

ONLY WHILE SUPPLIES LAST!





Spring Fever... Specials

Call Today 800-444-3595
fax: 516-921-0538

Wall Shelves *Knock-down*

Solid Shelf- Aluminum

ALWMS1236 12" W x 36"L 150lb Capacity

ALWMS1248 12" W x 48"L 125lb Capacity

ALWMS1260 12" W x 60"L 100lb Capacity

Solid Shelf-Stainless Steel

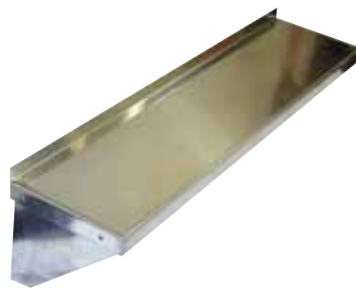
SSWMS122/KD 12"W x 24"L

SSWMS123/KD 12"W x 36"L

SSWMS124/KD 12"W x 48"L

SSWMS125/KD 12"W x 60"L

Aluminum Shelf
ALWMS series



Wall mounted knock-down stainless steel shelving, has a 1 1/2" sanitary rolled rim and a 1 1/4" turned up edge on rear and shelf sides. Shelf height 9 1/2". Constructed of 18 gauge polished stainless steel. Easy to assemble and install.

Dunnage Racks

Economy Tubular all welded 1 1/2" x 1 1/2" rust proof aluminum tubing. Capacity 1,500lbs. Prolongs product life by circulating air underneath. All 12"H



DASQ-3-1220 20"W x 36"L

DASQ-3-1224 24"W x 36"L

DASQ-4-1220 20"W x 48"L

DASQ-4-1224 24"W x 48"L

DASQ-5-1220 20"W x 60"L

DASQ-5-1224 24"W x 60"L



Stainless Steel
SSWMS series



Economy Dunnage Racks

Great for storing dish machine chemical off the floor, health code complaint. Steel plated wire.



Model W-1014 Single

Dimensions: 10"W x 14"L x 8"H
Capacity 500lbs

Model W-2414 Double Wide

Dimensions: 14"W x 24"L x 8"H
Capacity 850lbs

Valid on all orders placed & shipped 4/1/2011 - 6/30/2011
Minimum Order: \$200

Film Wrappers



Model WHSS-1
 Holds 1 roll. Aluminum & stainless steel construction. Electrical loop rated @ 8 amps, 115 volts, overall 750 watts.
 Dimensions:
 22¼"W x 24"L x 5"H



Pedestal Hand Sink



Model WHPS1110
 Construction of all TIG welded 16 gauge stainless steel. One foot pedal for hands-free control Includes: gooseneck faucet, basket drain and soap dispenser. 18" backsplash.
 Tub Dimensions:
 11"W x 10"L x 12"D



Smallwares

Trays

Model WHP-1826WH
 Dimensions: 18"W x 26"L x 1"H
 Sold in Dozens



Bagel Board

Model BB1826
 Dimensions:
 18"W x 26"L x 5/16"H



Bagel Scoop

Model WBS-1432
 Dimensions:
 14" W x 32"L



Pizza Dough Boxes

Model PD-18263
 Dimensions: 18"W x 26"L x 3"H



Lockers



All lockers open with door pulls and accept padlocks. Shipped fully assembled. Color: Beige.

Model WL-55

Column - 5 Doors
 Dimensions:
 12"W x 12"L x 78"H



Model WL-618

3 Column- 18 Doors
 Dimensions:
 36"W x 12"L x 78"H

Model WL-66

1 Column - 6 Doors
 Dimensions:
 12"W x 12"L x 78"H

Spring Fever...Specials



141 Eileen Way
Syosset, New York 11791

www.winholt.com

Modify standard stainless steel equipment to meet your specifications

Quality Innovation Service Solutions

The KCL Catalog

AutoQuotes

WIN-HOLT EQUIPMENT

Win-Fab™
Stainless Steel Fabrication
Money Saving Solutions

Add a Backsplash
Add a Larger Sink
Add a Cabinet
Change Table Finish

Your Global Supply Chain Advantage

- NEW YORK
- PENNSYLVANIA
- GEORGIA
- TEXAS
- CALIFORNIA
- MEXICO
- CHINA
- INDIA

65 Years of Experience
Manufacturing Quality Products
www.winholt.com | fax: 516-921-0538
800-444-3595