



Project:

Item Number:

Quantity:

## VACUUM PACK MACHINES



40850



40858

Vacuum Pack Machines

### DESCRIPTION

Vollrath vacuum pack machines extend the shelf life of refrigerated foods, enabling a broader and more flexible menu of fresh offerings. The in-chamber machine can pack wet or dry products and offers an excellent way to quickly marinate meats. The out-of-chamber machine packs dry foods.

### MODELS

40850 Medio In-Chamber Vacuum Pack Machine

40851 Grande In-Chamber Vacuum Pack Machine

40858 Junior Out-of-Chamber Vacuum Pack Machine

### FEATURES

#### In-Chamber Vacuum Pack Machines

- ☐ Suitable with wet or dry products
- ☐ Extends the shelf life of foods and cuts down on waste due to spoilage
- ☐ Vacuum packing opens the pores in foods, creating an excellent way to quickly marinate meats
- ☐ 6 ft. (1.8 m) cord with plug

#### Out-of-Chamber

- ☐ Requires specific bag type
- ☐ Extends the shelf life of foods and cuts down on waste due to spoilage
- ☐ Not suited for use with liquids
- ☐ 6 ft. (1.8 m) cord with plug

**WARRANTY:** All models shown come with Vollrath's standard warranty against defects in materials and workmanship. For full warranty details, please refer to the Vollrath Equipment and Smallwares Catalog.

### Agency Listings – In-Chamber



Due to continued product improvement, please consult [www.vollrathco.com](http://www.vollrathco.com) for current product specifications.

Approvals

Date



[www.vollrathco.com](http://www.vollrathco.com)

The Vollrath Company, L.L.C.  
1236 North 18th Street  
Sheboygan, WI 53081-3201 U.S.A.  
Customer Service: 800.628.0830  
Canada Customer Service: 800.695.8560  
Main Fax: 800.752.5620 or 920.459.6573

Technical Services: 800.628.0832  
Technical Services Fax: 920.459.5462

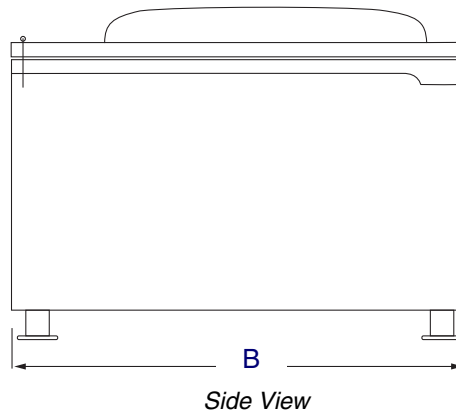
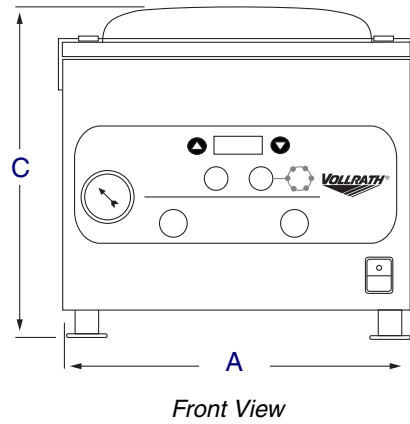
# VACUUM PACK MACHINES

<b>MODELS</b>	<b>40850</b>	<b>Medio In-Chamber Vacuum Pack Machine</b>
	<b>40851</b>	<b>Grande In-Chamber Vacuum Pack Machine</b>
	<b>40858</b>	<b>Junior Out-of-Chamber Vacuum Pack Machine</b>

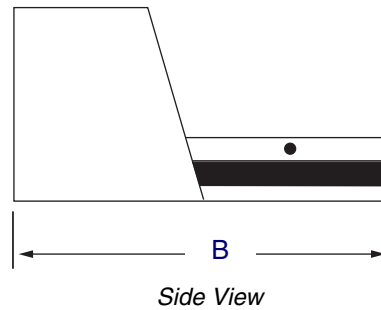
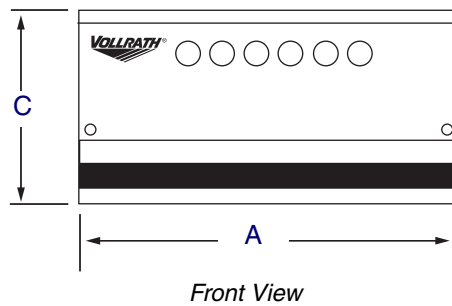
## DIMENSIONS

Dimensions shown in inches (cm).

### In-Chamber



### Out-of-Chamber



## SPECIFICATIONS

Item	Dimensions					HP	Volts	Amps	Ship Weight lb (kg)	Plug
	(A) Width	(B) Depth	(C) Height	Chamber Size	Sealing Bar Length					
40850	15 <sup>3</sup> / <sub>16</sub> (38.5)	20 <sup>1</sup> / <sub>2</sub> (52)	18 (45.7)	10 <sup>5</sup> / <sub>8</sub> x 15 <sup>3</sup> / <sub>4</sub> x 6 <sup>5</sup> / <sub>16</sub> (27 x 40 x 16)	9 <sup>13</sup> / <sub>16</sub> (25)	.98	120	5	98 (44.5)	5-15P
40851	21 <sup>7</sup> / <sub>8</sub> (54.5)	22 <sup>13</sup> / <sub>16</sub> (58)	22 (55.9)	17 <sup>1</sup> / <sub>8</sub> x 17 <sup>1</sup> / <sub>8</sub> x 8 <sup>1</sup> / <sub>4</sub> (43.5 x 43.5 x 21)	16 <sup>5</sup> / <sub>16</sub> (41.5)	1.68	120	9	182 (82.6)	5-15P
40858	14 <sup>3</sup> / <sub>4</sub> (37.5)	11 <sup>11</sup> / <sub>16</sub> (29.7)	5 <sup>11</sup> / <sub>16</sub> (14.5)	—	12 <sup>3</sup> / <sub>16</sub> (31)	.6	120	3.3	15 (6.8)	5-15P

### Receptacle

