



Outperform every day.™

Project:
Item Number:
Quantity:

Short Side Hot Drop-ins

The Vollrath Company, L.L.C.

SHORT SIDE HOT DROP-INS



Short Side Hot Drop-ins

DESCRIPTION

The Short Side Hot Drop-ins turn full-size pans sideways for a more narrow presentation. They are designed for top-mount installation and do not require hard-wiring.

Full-perimeter drip-edge contains spills and condensation within the stainless steel countertop area of the drop-in. Drip-edge adds additional strength to the flange area.

Drop-in meets NSF4 performance standards only when using moist heat. Operation with water is required for even heating of the food product.

High-density glass-fiber insulation allows zero-clearance installation.

Stainless steel wells allow use of full-size and fractional pans up to 6" (15.2 cm) deep while still providing moist heat. Adaptor bars are recommended when using fractional pans.

WARRANTY: All models shown come with Vollrath's standard warranty against defects in materials and workmanship. For full warranty details, please refer to www.Vollrath.com.

Agency Listings



Due to continued product improvement, please consult www.vollrath.com for current product specifications.

Item Numbers			Description	
1000 Watts Per Well				
Standard	Manifold	Manifold w/ Auto-Fill	Control	Voltage
Two Well				
36646	3664620	3664630	Thermostatic	208-240
36647	3664720	3664730	Infinite	
Three Well				
36648	3664820	3664830	Thermostatic	208-240
36649	3664920	3664930	Infinite	
Four Well				
36650	3665020	3665030	Thermostatic	208-240
36651	3665120	3665130	Infinite	
625 Watts Per Well				
Two Well				
36640	3664020	3664030	Thermostatic	120
36641	3664120	3664130	Infinite	
Three Well				
36642	3664220	3664230	Thermostatic	120
36643	3664320	3664330	Infinite	
Four Well				
36644	3664420	3664430	Thermostatic	120
36645	3664520	3664530	Infinite	

FEATURES

- Top is 18-gauge stainless steel
- Breaker gasket included for installation under drip-edge
- Flat work surface around opening
- Power indicator light
- Standard drain is ½" (1.3 cm) stainless steel fitting welded to pan with ball valve shutoff below exterior housing
- Manifold drain option is 1" (2.5 cm) copper tubing and retains individual well shut-off and adds manifold shutoff.
- Auto-fill eliminates the need to monitor wells and add water, reducing operating and labor costs. Attaches easily to manifold drain assembly using simple tools. The check valve/siphon prevents cross contamination of drain and potable water lines. Requires separate electrical service. See Auto-fill specification sheet for details.
- Unit insulated on sides, between wells, and below element assembly with high-density glass fiber insulation.
- Exterior housing is 20-gauge galvanized steel
- 6 ft (182.2 cm) cord with plug
- Stainless control panel has 3 ft (91.4 cm) teethered flexible rubber cord. Shipped connected to drop-in, but may also be remotely mounted.
- Positioning clips provided to center drop-in within cutout
- Standard mounting clips adjustable for up to 3" (7.6 cm) thick counters
- One-year parts and labor warranty

Approvals	Date



Outperform every day.™
www.vollrath.com

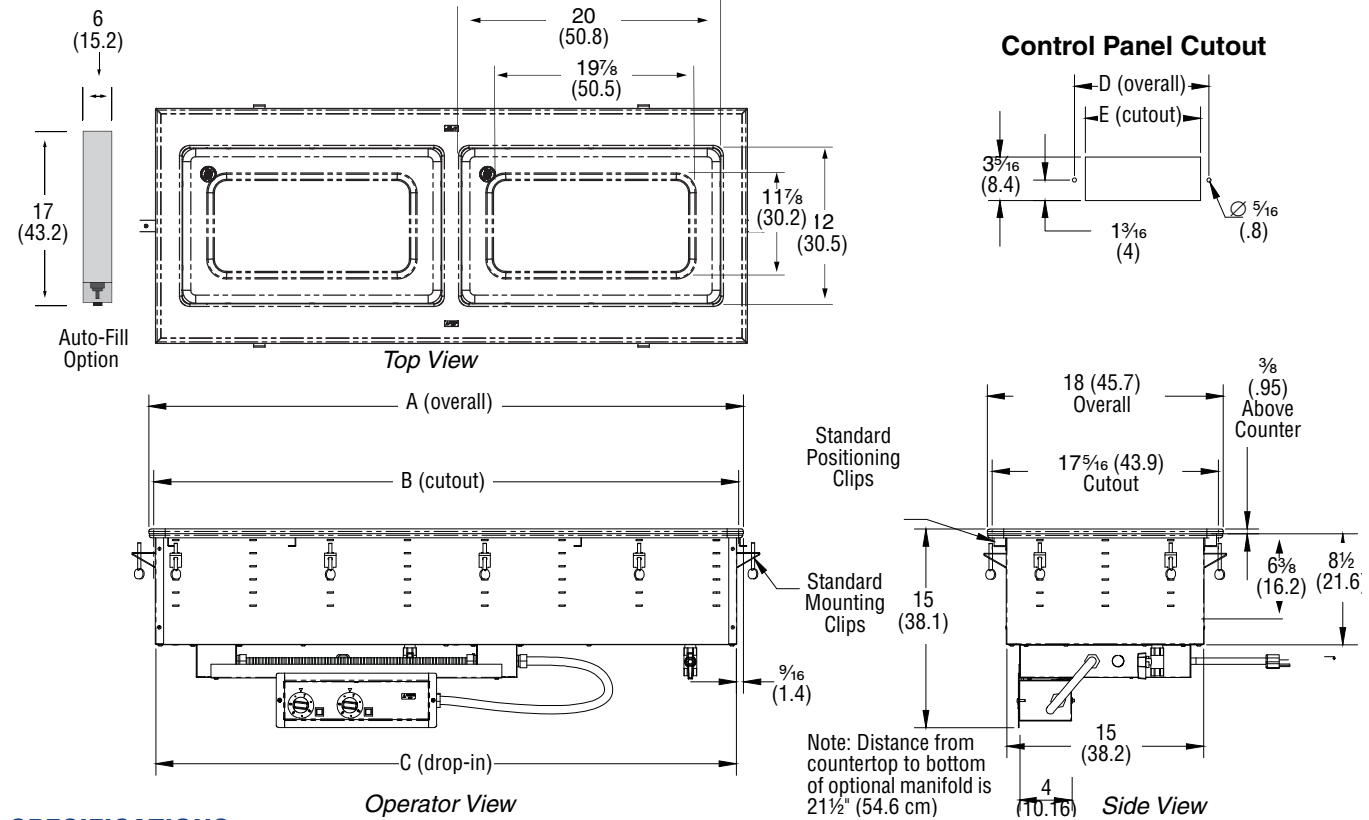
The Vollrath Company, L.L.C.
1236 North 18th Street
Sheboygan, WI 53081-3201 U.S.A.
Customer Service: 800.628.0830
Canada Customer Service: 800.695.8560
Main Fax: 800.752.5620 or 920.459.6573

Technical Services: 800.628.0832
Technical Services Fax: 920.459.5462

SHORT SIDE HOT DROP-INS

DIMENSIONS (Shown in inches (cm))

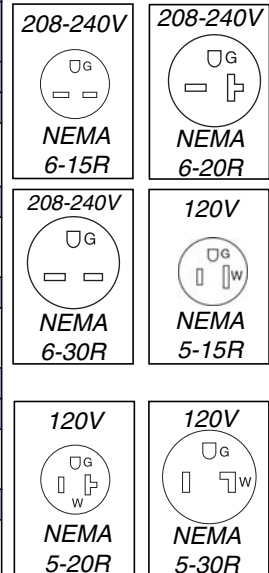
Note: Opening cutout must have a 7/8" (2.2 cm) corner radius.



SPECIFICATIONS

Item Numbers				Dimensions					Electrical		
				Module			Control Box		Voltage	Amps	Plug
Standard	Manifold	Manifold w/ Auto-Fill	Control	(A) Overall	(B) Cutout	(C) Drop-in	(D) Overall	(E) Cutout			
1000 Watts Per Well											
Two Well											
36646	3664620	3664630	Thermostatic	45 7/16 (114.6)	44 1/16 (113.5)	44 3/8 (112.7)	11 3/4 (29.9)	11 1/4 (28.6)	208 - 240	7.2 - 8.3	NEMA 6-15P
36647	3664720	3664730	Infinite	(114.6)	(113.5)	(112.7)	(29.9)	(28.6)			
Three Well											
36648	3664820	3664830	Thermostatic	66 7/8 (169.8)	66 1/8 (167.9)	65 3/4 (167.1)	15 1/2 (39.4)	15 (38.1)	208 - 240	10.8 - 12.5	NEMA 6-20P
36649	3664920	3664930	Infinite	(169.8)	(167.9)	(167.1)	(39.4)	(38.1)			
Four Well											
36650	3665020	3665030	Thermostatic	88 9/16 (225)	87 1/2 (222.3)	87 9/16 (221.5)	19 1/4 (48.9)	18 13/16 (47.6)	208 - 240	14.4 - 16.7	NEMA 6-30P
36651	3665120	3665130	Infinite	(225)	(222.3)	(221.5)	(48.9)	(47.6)			
625 Watts Per Well											
Two Well											
36640	3664020	3664030	Thermostatic	45 7/16 (114.6)	44 1/16 (113.5)	44 3/8 (112.7)	11 3/4 (29.9)	11 1/4 (28.6)	120	10.4	NEMA 5-15P
36641	3664120	3664130	Infinite	(114.6)	(113.5)	(112.7)	(29.9)	(28.6)			
Three Well											
36642	3664220	3664230	Thermostatic	66 7/8 (169.8)	66 1/8 (167.9)	65 3/4 (167.1)	15 1/2 (39.4)	15 (38.1)	120	15.6	NEMA 5-20P
36643	3664320	3664330	Infinite	(169.8)	(167.9)	(167.1)	(39.4)	(38.1)			
Four Well											
36644	3664420	3664430	Thermostatic	88 9/16 (225)	87 1/2 (222.3)	87 9/16 (221.5)	19 1/4 (48.9)	18 13/16 (47.6)	120	20.8	NEMA 5-30P
36645	3664520	3664530	Infinite	(225)	(222.3)	(221.5)	(48.9)	(47.6)			

Receptacles



Outperform every day.™

www.vollrath.com

The Vollrath Company, L.L.C.
1236 North 18th Street
Sheboygan, WI 53081-3201 U.S.A.
Customer Service: 800.628.0830
Canada Customer Service: 800.695.8560
Main Fax: 800.752.5620 or 920.459.6573

Technical Services: 800.628.0832
Technical Services Fax: 920.459.5462