

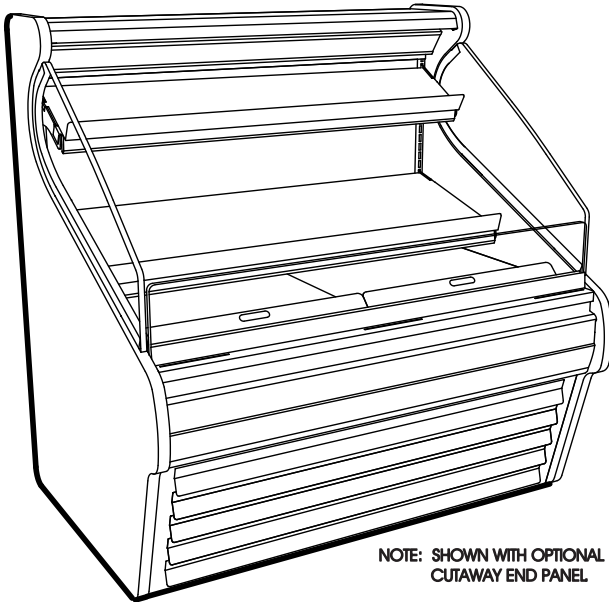
Self-Service Refrigerated Merchandiser

☐ CO4748R

47 1/4"L x 34 3/4"D x 50 5/8"H

STANDARD FEATURES

- Temp-Integrated average product temperature of 41°F
- Light-T-8 top light(s)
- Evaporator pan-Electric condensate pan (self-contained refig. only)
- Compressor air-Compressor air front intake, rear discharge
- Warranty-One year parts & labor; 1-5 year compressor warranty
- Shelves-Solid shelves, non-lighted
- Shelves-Shelving removable and adjustable on 1" centers
- Deck-Removable deck pans provide complete access to evaporator coil & refrigeration connections
- Upper rear-4"D removable rear wall spacer bracket.



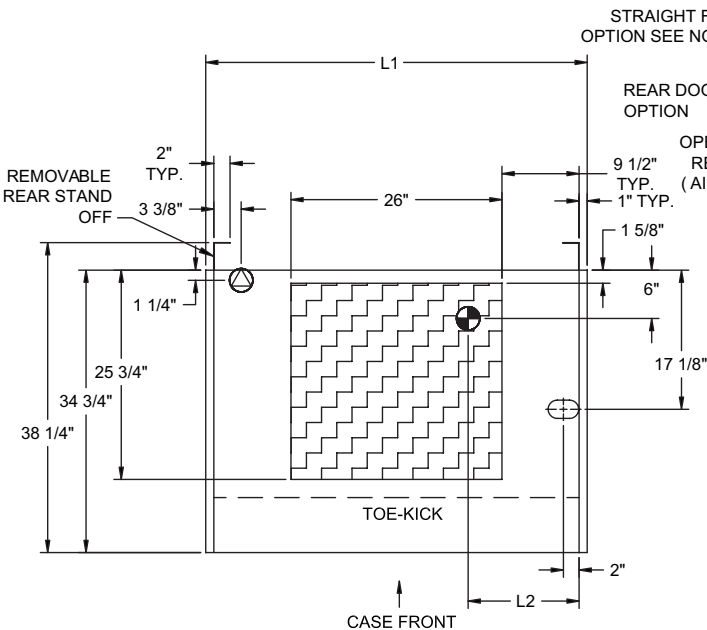
NOTE: SHOWN WITH OPTIONAL CUTAWAY END PANEL

	STANDARD SPECIFICATION	OPTION(s)
ELECTRICAL CONNECT	<input type="checkbox"/> 6 ft straight blade power cord (self cont.)	<input type="checkbox"/> 6 ft locking power cord (self cont.) <input type="checkbox"/> Electrical leads (remote)
END PANEL COLOR	<input type="checkbox"/> Black exterior	<input type="checkbox"/> Laminated exterior (Wilsonart/Formica premium) <input type="checkbox"/> Laminated exterior (Wilsonart/Formica non-premium) <input type="checkbox"/> Stainless steel exterior
END PANEL EDGE	<input type="checkbox"/> Vinyl end panel edge (matches interior color)	<input type="checkbox"/> Laminated end panel edge (Q4296)
HEADER COLOR	<input type="checkbox"/> Black exterior	<input type="checkbox"/> White exterior <input type="checkbox"/> Painted exterior (specify color) <input type="checkbox"/> Stainless steel exterior
LOWER FRONT PANEL COLOR	<input type="checkbox"/> Black exterior	<input type="checkbox"/> White exterior <input type="checkbox"/> Stainless steel exterior
MISCELLANEOUS	<input type="checkbox"/> None	<input type="checkbox"/> Clean Sweep® coil cleaner
UPPER FRONT PANEL COLOR	<input type="checkbox"/> Black exterior	<input type="checkbox"/> Painted exterior (specify color) <input type="checkbox"/> Laminated exterior (Wilsonart/Formica premium) <input type="checkbox"/> Laminated exterior (Wilsonart/Formica non-premium) <input type="checkbox"/> Stainless steel exterior
UPPER FRONT PANEL STYLE	<input type="checkbox"/> Formed ABS (painted)	<input type="checkbox"/> Straight front panel
UPPER REAR	<input type="checkbox"/> Solid back panel, galvanized	<input type="checkbox"/> Solid back panel, black
INTERIOR COLOR	<input type="checkbox"/> Black interior	<input type="checkbox"/> White interior <input type="checkbox"/> Stainless steel interior
COVER/CURTAIN	<input type="checkbox"/> None	<input type="checkbox"/> Removable solid security cover, locking <input type="checkbox"/> Roll down security cover, locking (inc. ht. 5") <input type="checkbox"/> Night curtain, retractable, non-locking
REFRIGERATION	<input type="checkbox"/> Breeze™ refrigeration	<input type="checkbox"/> Whisper cool compressor blanket (n/a w/Breeze-E) <input type="checkbox"/> Note: Remote does Not include Condensing unit <input type="checkbox"/> Remote w/thermostat, solenoid & TXV <input type="checkbox"/> Remote w/TXV
BASE SUPPORT	<input type="checkbox"/> Casters	<input type="checkbox"/> Levelers
END PANEL LEFT	<input type="checkbox"/> Full end panel w/mirror interior	<input type="checkbox"/> Cutaway end panel <input type="checkbox"/> Counter cutaway end panel (Q4292)
END PANEL RIGHT	<input type="checkbox"/> Full end panel w/mirror interior	<input type="checkbox"/> Cutaway end panel <input type="checkbox"/> Counter cutaway end panel (Q4292)
PRICE TAG MOULDING	<input type="checkbox"/> None	<input type="checkbox"/> Price tag moulding
BUMPER	<input type="checkbox"/> None	<input type="checkbox"/> 2" bumper on front (specify color)

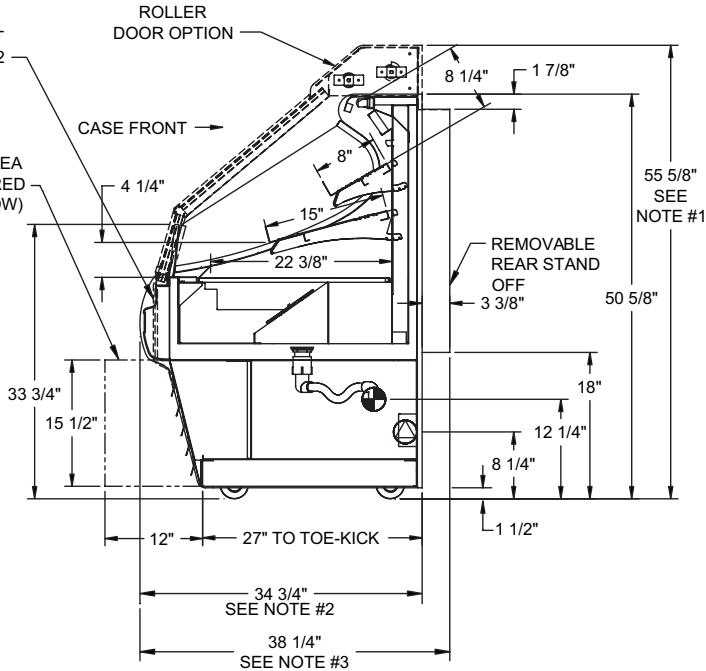
PRODUCT SPECIFICATIONS

Intended Use of Display Area: Packaged refrigerated products
 Integrated Product Temperature (IPT): 41°F
 Intended Environment: Designed to operate in ambient conditions of 75°F / 55% relative humidity.

PLAN VIEW



SIDE VIEW



NOTE: ALL DIMENSIONS APPROXIMATE

- ELECTRICAL JUNCTION BOX (SUPPLIED WITH 6" LEADS OR POWER CORD).
- LOCATION OF CONDENSATE DRAIN TUBE (SUPPLIED WITH 3/4" OR 1 1/2" PVC DRAIN TUBE).
- REFRIGERATION LINE CONNECTION.
- REMOTE CASE SERVICE ACCESS AREA.
- SELF-CONTAINED CASE SERVICE ACCESS AREA.
- DRY CASE SERVICE ACCESS AREA.

1. ROLL DOWN SECURITY DOOR INCREASES HEIGHT OF CASE BY 5".
2. STRAIGHT FRONT OPTION DECREASES DEPTH OF CASE BY 1 1/2".
3. DIMENSION INCLUDES REMOVABLE STAND-OFF TO ALLOW CASE THROUGH STANDARD DOOR OPENING.

Standard Refrigeration (based on Type I conditions: 75°F, 55% Relative Humidity)										
Self-Contained Refrigeration/Dry						Remote Refrigeration w/Leads				
Model	L1*	L2*	Volts++	Amps	NEMA Plug	Volts	Amps***	BTUH	Ship Wt	Frt Cls
CO4748R	47 1/4	13 1/2	220/1/60**	11.68	NEMA 14-20 P	120/1/60	1.46	3927	740	110

Breeze-E Refrigeration (based on Type II conditions: 80°F, 60% Relative Humidity)****										
Self-Contained Refrigeration/Dry						Remote Refrigeration w/Leads				
Model	L1*	L2*	Volts++	Amps	NEMA Plug	Volts	Amps***	BTUH	Ship Wt	Frt Cls
CO4748R	47 1/4	13 1/2	220/1/60**	16.46	NEMA 14-20 P	120/1/60	1.46	3927	740	110

++Operating range for 120 volt rating is 110-120 volts; operating range for 220 volt rating is 208-230 volts.
 ** Requires 3 wires + ground
 *** Does not include electric defrost on freezer models
 **** Energy consumption will be less under Type I conditions; Example: 10% Less on CO5978R

- REGULATORY APPROVALS**
- ETL Listed Certified to CAN/CSA 22.2 in process
 - ETL Sanitation Conforms to NSF 7
 - ETL Listed Conforms to UL 471
 - Rated in Accordance with ARI Standard 1200

Important Note:
 If units are supplied with levelers, they must be adjusted during installation to ensure the unit is level and plumb.

Important Note:
 Compressor air ventilation is out the rear. Unit must remain 4" from the wall and front panel cannot be blocked. Product temperature will be affected if the air curtain is disrupted.

Important Note:
 This unit includes 3 1/8" removable spacers along the rear. 40 1/4" minimum door entry clearance is required (without shipping skid). 36 3/4" minimum door entry is required if spacers are removed.