



## NORDIC CCM0830 SERIES

MODULAR CUBED ICE MAKER



Ice maker shown on B842SS bin

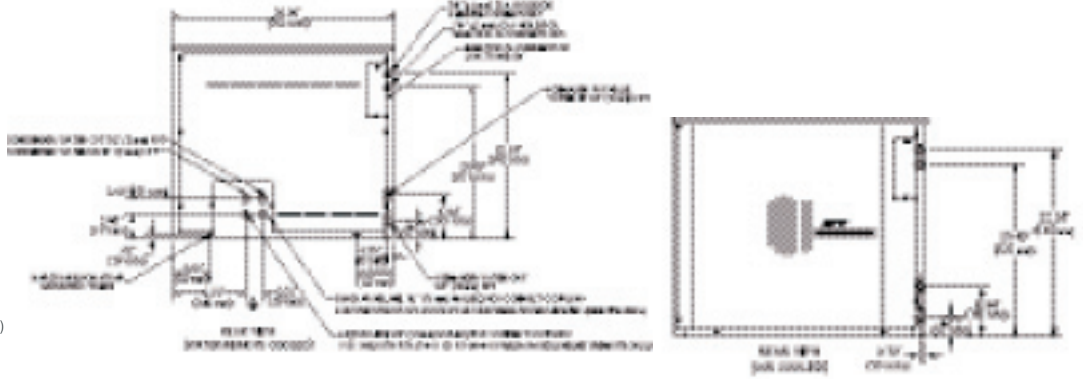
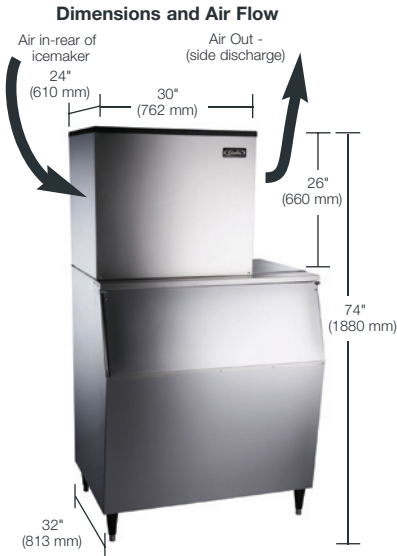
### FEATURES:

- Produces up to 1094 lbs. (497 Kgs.) of ice per day
- Constructed from corrosion-resistant stainless steel
- Built in Agion Antimicrobial product protection effective against mold, mildew and fungus
- Ultra-low profile – only 26 inches (660 mm) tall
- Harvest assist reduces utility consumption
- Choice of full or half cube size
- No air filter to clean or replace

Protected by Agion



Nature's antimicrobial



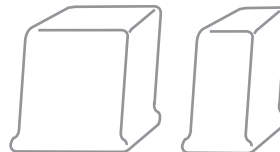
**OPERATING LIMITS**

Ambient Temp. Range Air & Water	50° - 110°F (10° - 43°C)
Water Temp. Range	40° - 100°F (4.5° - 38°C)
Water Pressure Ice Maker Water in	Min. 20 psi (1.4 bar)
	Max. 60 psi (6.9 bar)
Condenser Inlet Water (Water cooled only)	Min. 20 psi (1.4 bar)
	Max. 60 psi (6.9 bar)

MODEL NO.	Cond. Unit	Ice Prod. per 24 hrs. at 70° Air / 50° Water lbs. (Kgs.)	Ice Prod. per 24 hrs. at 90° Air / 70° Water lbs. (Kgs.)	Water Used-Gals. (Ltrs.) per 100 lbs. of ice 90° Air / 70° Water		Kilowatts Used per 100 lbs. of ice 90° Air / 70° Water	Heat Rejection (Btuh)	Electrical Rating	Min. Circuit Amp.
				Ice Prod. Use	Cond. Use				
CCM0830A*2	Air	958 (435)	698 (317)	21.8 (83)	n/a	6.2	15003	208-230/60/1	13.0
CCM0830W*2	Water	998 (454)	840 (382)	22.8 (86)	126.3 (478)	3.9	14458	208-230/60/1	9.8
CCM0830R*2	Remote	1094 (497)	762 (346)	22.5 (85)	n/a	5.4	15168	208-230/60/1	12.3
CCM0830AF5	Air	897 (408)	615 (280)	21.7 (82)	n/a	6.3	13321	230/50/1	12.0
CCM0830WF5	Water	1051 (478)	855 (389)	23.2 (88)	131.4 (497)	3.7	14382	230/50/1	9.2
CCM0830RF5	Remote	1020 (464)	738 (335)	22.0 (83)	n/a	5.2	14474	230/50/1	13.0

MODEL NO.	Description	Shipping Weight lbs. (Kgs.)
RC08002	Remote Condenser for 1 model CCM0830R (208-230/50-60/1 voltage)	95 (43)
RT25	25 ft. (7.6m) Precharged Tubing Kit for R-404A models	13 (6)
RT40	40 ft. (12m) Precharged Tubing Kit for R-404A models	18 (8)
RT60	60 ft. (18.2m) Precharged Tubing Kit for R-404A models	26 (12)

See Bin specification sheet for information on ice storage bins  
 \* Represents cube size. For full cube substitute an "F", for half cube substitute an "H".  
 Please note: air-cooled units require 6" (152 mm) clearance for air intake and exhaust.



NUMBER OF WIRES . . . . . 3  
 MAX. FUSE SIZE . . . . . 50 Hz: 15  
 60 Hz: 20  
 SHIPPING WEIGHT LBS (KGS.) . . 210 (96) - 220 (100)

Cube Size:	Width	Depth	Height
Full	7/8" (22mm)	7/8" (22mm)	7/8" (22mm)
Half	3/8" (10mm)	7/8" (22mm)	7/8" (22mm)

AGENCY LISTINGS . . . . . NSF c UL us LISTED



IN THE U.S.A. Ph: 800.238.3600 Fax: 763.488.4283  
 OUTSIDE THE U.S.A. Ph: 763.488.8200 Fax: 763.488.4283  
 101 Broadway Street West Osseo, MN 55369 www.cornelius.com