



A JohnsonDiversey Company



**CMA-66L**  
Chemical Sanitizing  
66" Conveyor  
Dishwasher

Item. # \_\_\_\_\_



**FEATURES:**

- 242 racks / 968 covers per hour.
- Economical to operate. Uses only .8 gallons of water per cycle.
- Four-stage washing process provides pre-wash, dual power wash and final rinse all in a 66" machine.
- Unique soil purging system filters wash water and traps plate debris into an external tray. Tray can be easily removed for dumping contents.
- Heavy duty 12 and 14 gauge 304 stainless steel construction offers durable performance and years of trouble free operation.
- Built-in chemical resistant industrial 10kW heater is proven to be more durable than commercial style heaters.
- Large 19" high opening accommodates larger items and utensils.
- Auto start/stop makes operation safe and easy.
- Includes table limit switch and rack saver arm that protect the machine, dishracks and table from damage.
- Three speed settings available for optimum cleaning performance.

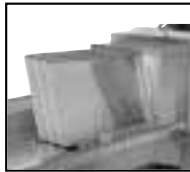
Spec. # \_\_\_\_\_



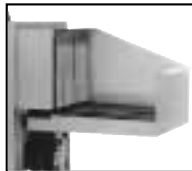
Rack saver arm protects the machine, dishracks and table from damage.



Four-stage washing process provides pre-wash, power wash and final rinse all in a 66" machine.



Large 19" high opening accommodates larger items and utensils.



Shown with optional corner feed table. Available right or left.



Easy to remove wash arms with captive end caps. **Never lose another end cap again!**



Top mounted controls include easy to read temperature gauges and complete operating instructions.

AIA # \_\_\_\_\_

CMA Dishmachines 12700 Knott Avenue Garden Grove, CA 92841 • 800-854-6417 • 714-898-8781 • Fax: 714-895-2141 • www.cmadishmachines.com

CMA reserves the right to modify specifications or discontinue models without prior notification.

Lit#0109

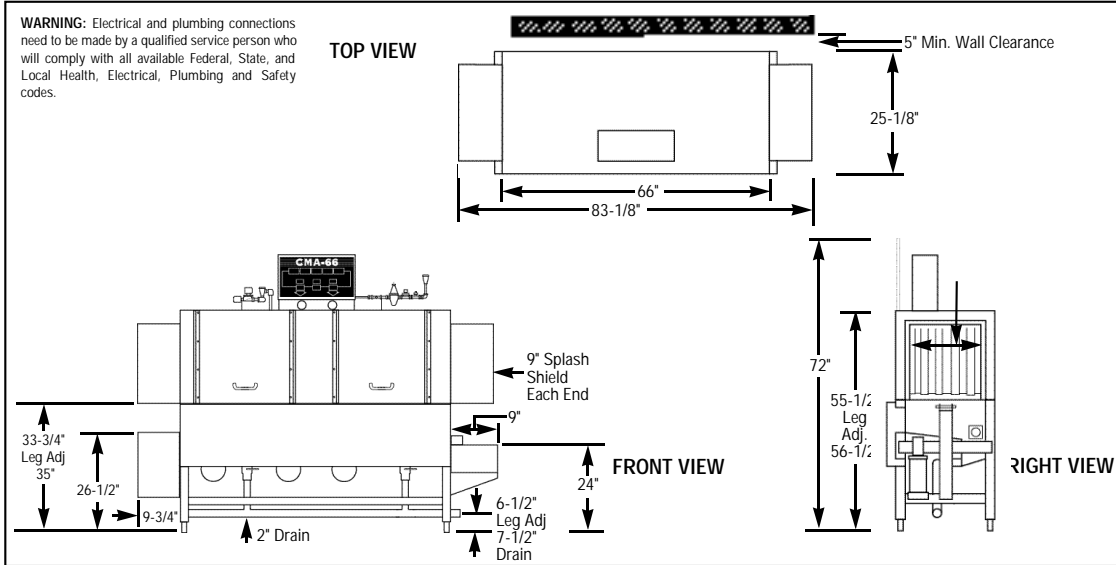
Printed in the U.S.A.

© 2003 CMA, Inc.



**CMA-66L**  
 Chemical Sanitizing  
 66" Conveyor  
 Dishwasher

A JohnsonDiversey Company



Spec. #

AIA #

**Specifications:**

MODEL CMA-66L	USA	METRIC		USA	METRIC	
<b>OPERATING CAPACITY</b>			<b>DIMENSIONS</b>			
RACKS PER HOUR (NSF RATED)	242	242	DEPTH	25-1/8"	(64cm)	
CONVEYOR SPEED	6.75 FT./MIN.	(206 CM/MIN.)	WIDTH	66"	(167.64cm)	
DRAIN	2"	-	HEIGHT	69-1/2" (73" door open)	(176.5cm)	
(3) WASH PUMP MOTORS HP	1	1	STANDARD TABLE HEIGHT	34"	(86cm)	
CONVEYOR MOTOR HP	1/3	1/3	MAX HEIGHT CLEARANCE FOR DISHES	19"	(48cm)	
WATER INLET - FILL	3/4"	-	<b>STANDARD DISHRACK</b>			
WATER INLET - FINAL RINSE	1/2"	-	DIMENSIONS	19-3/4"X19-3/4"	(50X50cm)	
<b>WASH TANK CAPACITY</b>			<b>ELECTRICAL RATING</b>	<b>VOLTS</b>	<b>PHASE</b>	<b>AMPS</b>
PRE-WASH	5.25 GAL	(20.0 L)		208	1	65
WASH	13.25 GAL	(50.0 L)		240	1	68
TOTAL	18.5 GAL	(70 L)		208	3	42
				240	3	45
<b>WASHPUMP CAPACITY</b>			<b>ELECTRIC TANK HEATER</b>	10kW		
EACH	38 GPM	(143.8 LPM)	<b>SPECIFY DIRECTION OF RACK TRAVEL (RIGHT TO LEFT OR LEFT TO RIGHT) WHEN ORDERING</b>			
<b>OPERATING TEMPERATURE</b>			<b>SHIPPING WEIGHT</b>			
WASH	140°F-150°F	(60°C/65.5°C)	APPROXIMATE	750#		(340.2kg)
FINAL RINSE	140°F-150°F	(60°C/65.5°C)				
<b>WATER CONSUMPTION</b>						
PER RACK (FINAL RINSE)	.8 GAL	(3 L)				
PER HOUR (FINAL RINSE)	192 GPH	(726.8 LPH)				

**Summary Specifications: Model CMA-66L**

The Model CMA-66L low energy, chemical sanitizing conveyor dishwasher meets NSF, UL, and CUL sanitation and construction standards WITHOUT the use of a BOOSTER HEATER. The CMA-66L performs three separate washing functions including a built-in pre-wash, all in a 66" space. The CMA-66L washes up to 242 racks per hour and uses a minimum .8 gallons of water per rack while achieving sparkling, clean, dry dishes.

**Available Models**

- CMA-66LR/L Right to Left
- CMA-66LL/R Left to Right

**Available Options**

- Corner Feed Table
- Alternative electrical options
- Also available at 205 or 167 racks/hr
- Stainless steel dishtables
- Auto Fill
- Vent Hood with 4" X 16" Vent and Damper Control (2 per set)
- Motor Cover

CMA Dishmachines 12700 Knott Avenue Garden Grove, CA 92841 • 800-854-6417 • 714-898-8781 • Fax: 714-895-2141 • www.cmadishmachines.com

CMA reserves the right to modify specifications or discontinue models without prior notification.

Lit#0109

Printed in the U.S.A.

© 2003 CMA, Inc.