



Item #: _____
 Quantity: _____
 Model #: E1-DDA-
 Project #: _____

E1 Angled Drop-In Dispensers



Model #: E1-DDA-2V

- Two-hole drop-in angled dispenser
- Holds two (2) E1 Inserts vertically
- Enclosed bottom contains debris and spills
- All welded 304 stainless steel construction
- 22 3/4" x 16 1/2" x 9 1/2" overall dimensions
- Made in the U.S.A.



Model #: E1-DDA-3V

- Three-hole drop-in angled dispenser
- Holds three (3) E1 Inserts vertically
- Enclosed bottom contains debris and spills
- All welded 304 stainless steel construction
- 33 5/8" x 16 1/2" x 9 1/2" overall dimensions
- Made in the U.S.A.

Product Specification:

Steril-Sil model #E1-DDA- Angled Drop-In Dispenser. Works exclusively with the Steril-Sil E1 Silverware Handling System and accepts Steril-Sil E1 Inserts. Unit includes an enclosed base to contain debris and spills. All welded 304 stainless steel construction. Made in the U.S.A.

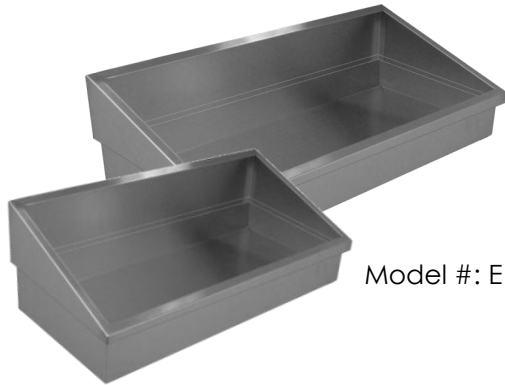
Steril-Sil, LLC

1050 Commonwealth Avenue
 Boston, MA 02215
 Phone: 800-784-5537
 Fax: 617-739-5063
 Email: sales@sterilsil.com
 www.sterilsil.com

Notes:



E1 Angled Drop-In Dispensers



Model #: E1-DDA-3V

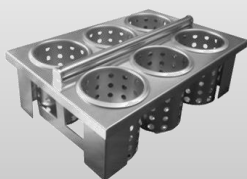
Model #: E1-DDA-2V

E1 Angled Drop-In Dispenser

Designed for use with Steril-Sil Silverware Handling System

Model #	Description	Overall Dimensions			Cutout Dimensions		Ship #
		Length	Width	Height	Length	Width	
E1-DDA-2V	2-hole E1 drop-in angled countertop dispenser with solid bottom holds 2 E1 inserts vertically	22.75"	16.5"	9.5"	21.25"	14.75"	14 lbs.
E1-DDA-3V	3-hole E1 drop-in angled countertop dispenser with solid bottom holds 2 E1 inserts vertically	33.55"	16.5"	9.5"	32.00"	14.75"	18 lbs.

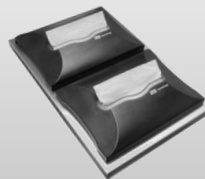
Available Accessories:



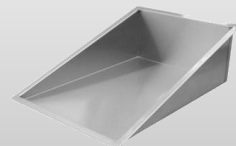
E1-BS-60E-W
Drop-In Silverware basket



E1-1N5-2SD-1VH
Napkin & Straw Dispenser



E1-N5D-1VH
Dual Napkin Dispenser



E1-FTA-1V
Flat Top Adapter

See the E1 Accessories page for additional options and details