



# BEVERAGE-AIR

3779 Champion Blvd., Winston-Salem, NC 27105  
1-888-845-9800 Fax# 1-336-245-6453  
<http://www.Beverage-Air.com>

## Commercial Refrigeration Equipment General Specification

### LUMAVUE SERIES—GLASS DOOR MERCHANDISER

Used for merchandising and storage of product.

#### CABINET CONSTRUCTION

Heavy duty construction includes white coated steel interior walls. Exterior finish is heavy-duty steel with a baked on durable coating. Choose from black or white finish.

Foamed-in-place CFC and HCFC-free polyurethane insulation enhances the structural strength of the cabinet and helps increase energy efficiency.

Modern, one-piece grille is easily removed for cleaning and servicing.

Double pane, lowE argon filled glass door features inside and outside panes that are tempered for added safety.

Self-closing, hinged glass door features recessed, pocket door handle provides low profile and is more aesthetically pleasing. Door provides automatic hold-open feature.

Three white epoxy coated steel shelves are standard.

#### REFRIGERATION

Whisper-quiet refrigeration system uses R134a refrigerant, which is CFC and HCFC-free for compliance with environmental safety concerns.

Product temperatures from 32°F to 40°F.

#### ELECTRICAL

Interior fluorescent lighting enhances product illumination. Optional LED lighting provides hidden light source for increased product visibility. LED bulbs last up to 10 times longer compared to fluorescent bulbs and renders additional energy savings due to reduced wattage load on compressor.

Units wired at factory and ready for connection to a 115/60/1 phase, 15 amp dedicated outlet. 8' long cord and plug set included.

#### ELECTRICAL CONNECTION

Units pre-wired at factory and include 8' long cord and plug set.



Item No. \_\_\_\_\_  
Quantity \_\_\_\_\_

**HINGED GLASS DOOR  
LUMAVUE  
MERCHANDISER SERIES  
LV10**

**MODEL:  
LV10**



**LV10**

(shown with optional fourth shelf)

#### SPECIAL FEATURES

- Whisper-quiet refrigeration system
- Recessed, pocket door handle
- Optional LED lighting
- 2010 Federal Energy Compliant
- Gravity Flo kits and Can Roller options available

Available From:



\*Note: Not all markings may apply to all model variations.

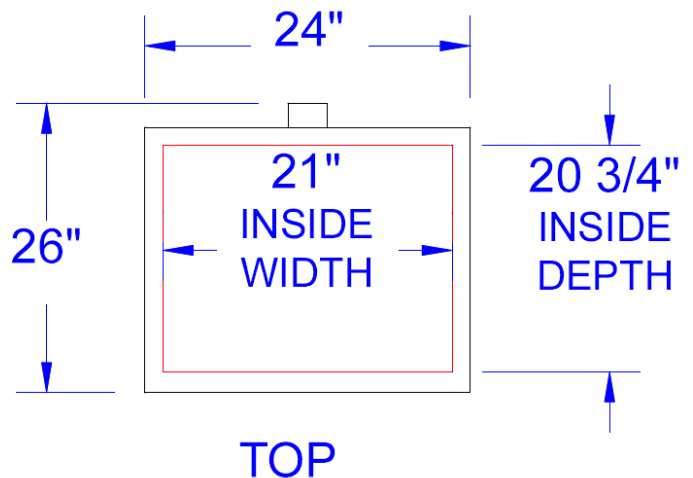
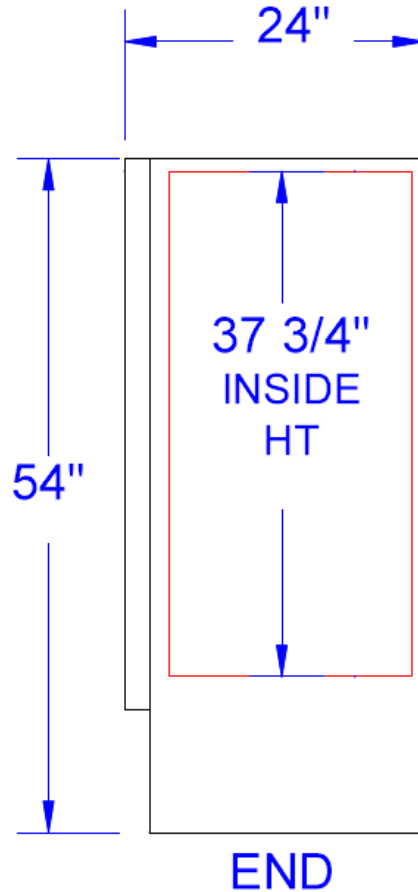
|                              |                       |
|------------------------------|-----------------------|
| <b>Model Specified</b> _____ | <b>Store#</b> _____   |
| <b>Location</b> _____        | <b>Quantity</b> _____ |



## PLAN VIEWS

### LumaVue Glass Door Merchandisers Model: LV10

|  |                |
|--|----------------|
| <b>MODEL</b>   | LV10           |
| <b>EXTERNAL DIMENSIONAL DATA</b>                                 |                |
| Length Overall (inches)<br>Length Overall (mm)                   | 24"<br>610     |
| Depth Overall (inches)<br>Depth Overall (mm)                     | 26"<br>660     |
| Height Overall— (inches)<br>Height Overall— (mm)                 | 54"<br>1372    |
| Number of doors  | 1              |
| Depth with Door Open 90 °  | n/a*           |
| <b>INTERNAL DIMENSIONAL DATA</b>                                 |                |
| NET Capacity (cubic ft.)<br>NET Capacity (Liters)                | 10<br>283      |
| Internal Length Overall (inches)<br>Internal Length Overall (mm) | 21"<br>533     |
| Internal Depth Overall (inches)<br>Internal Depth Overall (mm)   | 20 3/4"<br>527 |
| Internal Height Overall—(inches)<br>Internal Height Overall—(mm) | 37 3/4"<br>959 |
| Number of shelves  | 3              |
| <b>ELECTRICAL DATA</b>   |                |
| Full Load Amperes 115/60/1                                       | 5.0 A          |
| <b>ENERGY CONSUMPTION</b>  | 3.1 kWh/Day    |
| <b>REFRIGERATION DATA</b>  |                |
| Horsepower   | 1/5            |
| <b>WEIGHT DATA</b>   |                |
| Gross Weight (Crated lbs)  | 220            |
| Gross Weight (Crated kg)   | 100            |



**Note:** Not all markings may apply to all model variations.

\*N/A: Not available at time of printing.

## BEVERAGE-AIR® CORPORATION

3779 Champion Blvd. • Winston-Salem, NC 27105 USA • (336) 245-6400 • Fax (336) 245-6453 • (888) 845-9800 • www.beverage-air.com

Specifications are subject to change without prior notice. 06/10