

# KEG Series

## Beer Keg Dispensers

Avantco's line of beer dispensers is the perfect way to keep your favorite brews cold and refreshing all the time! Complete with a powerful yet efficient refrigeration system and a 2 ½" diameter tap tower, these beer dispensers let you serve up to (1) ½ keg of beer at a time. And since you can choose between two color configurations (black or stainless steel door), it's easy to find the perfect model to suit the look and feel of your application.



- Powerful yet efficient refrigeration system
- Holds (1) ½ barrel keg
- CO2 tank, regulator, drip tray and tap included
- Black or stainless steel door
- UL and ETL Listed



Serve up one frosty brew after another with the Avantco ZPJ-170 black one keg beer dispenser! Ideal for use at parties, fundraising events, and more, this unit features an 11 3/4" high, 2 1/2" diameter tower with single tap, while the included CO2 tank and CO2 regulator give you everything you need to keep the beer flowing. Foamed in place insulation and a powerful yet efficient refrigeration system ensure that your beer stays at the optimum serving temperature, while the included drip tray and its black, painted steel exterior look great and make cleanup easy.

Four 3" casters (two with brakes) allow you to easily move the unit from one location to another, and permit easy cleaning underneath. UL and ETL Listed. This model comes with a 5' cord and NEMA 5-15P plug.

## Features

- Black vinyl exterior
- Attractive chrome guard rail
- Holds (1) 1/2 barrel keg
- 40°-50° F temperature range
- 2 1/2" diameter, 11 3/4" high tap tower
- CO2 tank (ships empty), regulator, drip tray and tap included
- 21" wide footprint
- (4) casters (2 with brakes)

## Technical Data

### Dimensions

Exterior Dimensions (W x D x H)	21 <sup>3</sup> / <sub>8</sub> x 26 <sup>7</sup> / <sub>8</sub> x 33 <sup>1</sup> / <sub>4</sub> (including 3" casters)
Interior Dimensions (W x D x H)	17 <sup>5</sup> / <sub>16</sub> " x 16 <sup>1</sup> / <sub>2</sub> " x 27 <sup>15</sup> / <sub>16</sub> " (5 <sup>5</sup> / <sub>16</sub> "H x 7 <sup>1</sup> / <sub>16</sub> "D box for compressor excluded)
Net Volume (cu. ft.)	6
Net Weight (lbs.)	77
Tower Diameter	2 1/2"
Tower Height	11 3/4"

### Cooling

Temperature Range	40° - 50°F
Refrigerant	R134a
Maximum Ambient Temperature Rating	100°
Temperature Display	No
Temperature Controller	Control Knob

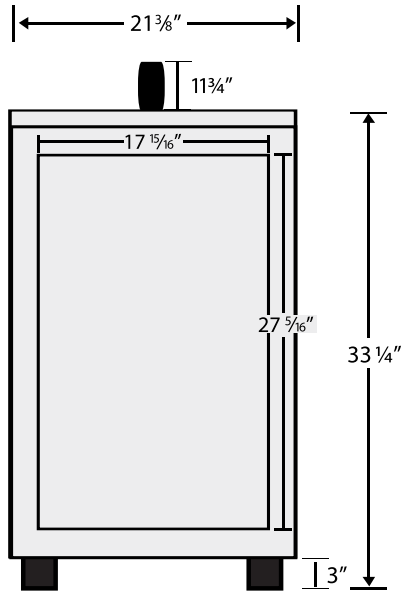
### Construction

Exterior Material	Painted steel
Interior Material	Plastic liner
Insulation Material	Foamed in place polyurethane

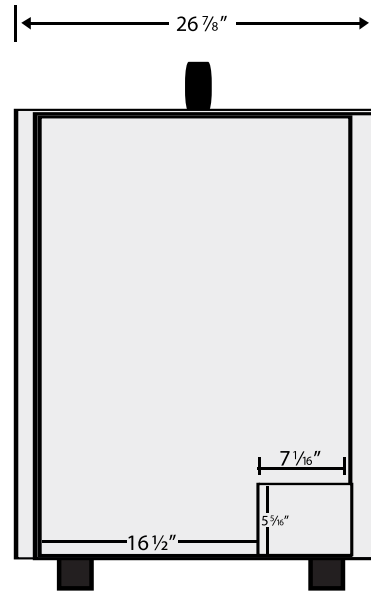
### Electrical

Voltage	115V
Amps	1.9A
Hz	60
Phase	1
Electrical Cord Length	5'
NEMA Plug	5-15P

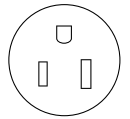
## Plan View



FRONT VIEW



SIDE VIEW



NEMA 5-15P



**Parts & Labor**

Avantco Beer Dispensers are backed by a 1 year parts and labor warranty. For warranty inquiries or service, locate the serial number plate on the front of the unit, or inside the door jamb. Be sure to have the serial and model numbers available when contacting service technicians.